

Office/Retail Opportunity | For Lease



# 2153 N KING ST

Honolulu, HI 96819

---

2153 N. King Street offers flexible retail and office space in Kalihi's busy business corridor. Just 5-7 minutes from downtown Honolulu and 10-12 minutes from the airport, the property provides excellent visibility, accessibility, and convenience for businesses and clients.

## Contact Us

### Grace Asevedo

Lic. (RS)-88159  
grace@pacificpropertygrouphawaii.com  
(225) 333-7965

### Keane Omaye-Backman

Lic. (RS) 76415  
keane@pacificpropertygrouphawaii.com  
(808) 292-6861

### Peter Grossman

Lic. (RS) 68843  
peter@pacificpropertygrouphawaii.com  
(808) 282-0086

# Property Description



## Overview

Located at 2153 N. King Street, the building features contemporary commercial office spaces complemented by abundant parking and shared common-area amenities. Strategically positioned with excellent street visibility and ease of access, the property offers open-plan suites and private offices ideal for medical professionals, consultants, or small enterprises. Onsite food options include Subway, Chinese cuisine, and BBQ. The surrounding Kalihi neighborhood is home to roughly 55,000 residents, with a median household income of about \$74,700.

**Peter Grossman**

Lic. (RS) 68843

peter@

pacificpropertygrouphawaii.com

(808) 282-0086

**Keane Omaye-Backman**

Lic. (RS) 76415

keane@

pacificpropertygrouphawaii.com

(808) 292-6861

**Grace Asevedo**


Lic. (RS) 88159

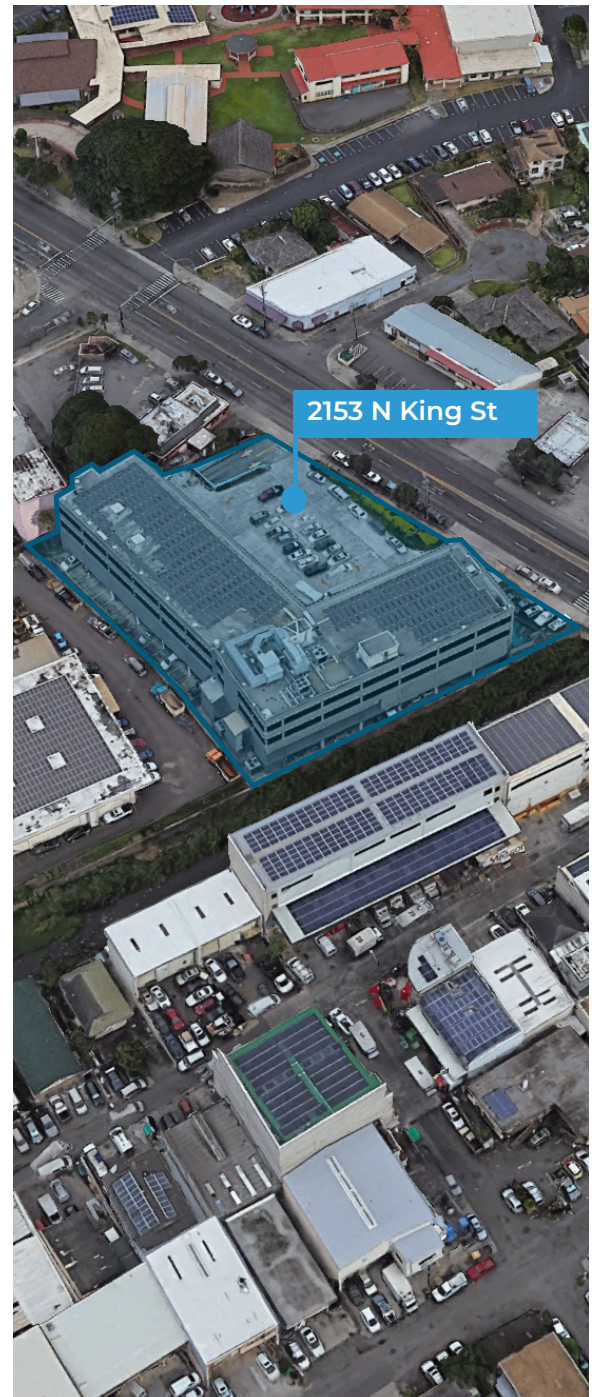
grace@

pacificpropertygrouphawaii.com

(225) 333-7965

# Opportunity

 <p><b>Address</b></p>	<p>2153 N King St Honolulu, HI 96819</p>
<p><b>Base Rent</b></p>	<p>See next page for rates.</p>
<p><b>CAM</b></p>	<p><b>\$1.60/SF/Mo</b></p> <p>Office: includes HVAC, RPT, janitorial services, electricity, water/sewer</p> <p>Retail: includes HVAC, RPT, janitorial services.</p> <p>(Electricity, water/sewer, grease trap maintenance paid separately.)</p> <p>After Hours AC Cost (Outside of 7a - 5p M-F, 7a - 1p Sat): \$20/Hour</p>
<p><b>Office Building Hours</b></p>	<p>Monday to Friday - 6am thru 6pm Saturday - 6am thru 12:00pm Sunday - Closed</p>
<p><b>Parking</b></p>	<p>2 spaces/400 SF Reserved: \$188.48/stall/mo Unreserved: \$120.42/stall/mo</p>
<p><b>Lease Term</b></p>	<p>3 to 5+ years</p>
<p><b>TMK</b></p>	<p>1-1-2-14-54</p>



**Peter Crossman**  
Lic. (RS) 68843  
peter@pacificpropertygrouphawaii.com  
(808) 282-0086

**Keane Omaye-Backman**  
Lic. (RS) 76415  
keane@pacificpropertygrouphawaii.com  
(808) 292-6861

**Grace Asevedo**  
Lic. (RS) 88159  
grace@pacificpropertygrouphawaii.com  
(225) 333-7965



# Spaces Available

\*Does not include Hawaii General Excise Tax. This is an estimate of base rent and CAM costs per month.

Suite Number	Square Footage	Type	Est. Price per Month*	Description
103	1,543	Retail	\$7,329.25	Office/Retail space with open floor plan. Features a kitchenette area with sink, storage closet, single restroom with vanity, and conference room.
106	721	Retail	\$3,605.00	4 Private offices with connecting hallway. Retail space with signage.
110A	678	Retail	\$4,068.00	Ground floor retail space with two sinks, and bathroom with shower.
302A	361	Office	\$1,263.50	Turnkey 3rd Floor updated office space with private office with ocean view. Comes furnished with cubicles.
303	606	Office	\$2,121.00	Turnkey Open office area with 2 cubicles and work space with team connect area overlooking ocean. Private office est. 56 SF.
304	507	Office	\$1,521.00	Office space with 2 private offices and and one shared area.
316	1,197	Office	\$4,189.50	Large office space with private offices. Comes furnished.
319	250	Office	\$950.00	Office space with general bullpen area and private office. Comes furnished.
320	511	Office	\$1,916.25	Office space with large open space and private office. Comes furnished.
324	715	Office	\$1,787.50	Office space featuring 3 private offices with a reception area.
325	797	Office/Medical	\$2,391.00	This space used to be a medical office. It features a reception/waiting room, private restroom, water line for sink, 4 private patient rooms, and a book keeping area.
328	129	Office	\$387.00	Office space that is a slender L shape. No windows in this unit.

# Property Map



**Traffic Count:**

Collection Street	Cross Street	Traffic Vol
1 W H1 Fwy	Richards Ln E	164,845
2 North King Street	Umi St SE	17,083
3 North King Street	Bannister St NW	9,882



## Contact Us

**Grace Asevedo**  
 Lic. (RS) 88159  
 grace@pacificpropertygrouphawaii.com  
 (225) 333-7965

**Keane Omaye-Backman**  
 Lic. (RS) 76415  
 keane@pacificpropertygrouphawaii.com  
 (808) 292-6861

**Peter Grossman**  
 Lic. (RS) 68843  
 peter@pacificpropertygrouphawaii.com  
 (808) 282-0086

Office/Retail Opportunity | For Lease



# 2153 N KING ST

Honolulu, HI 96819

---

## FLOOR PLANS

### Contact Us

**Grace Asevedo**

Lic. (RS)-88159  
grace@pacificpropertygrouphawaii.com  
(225) 333-7965

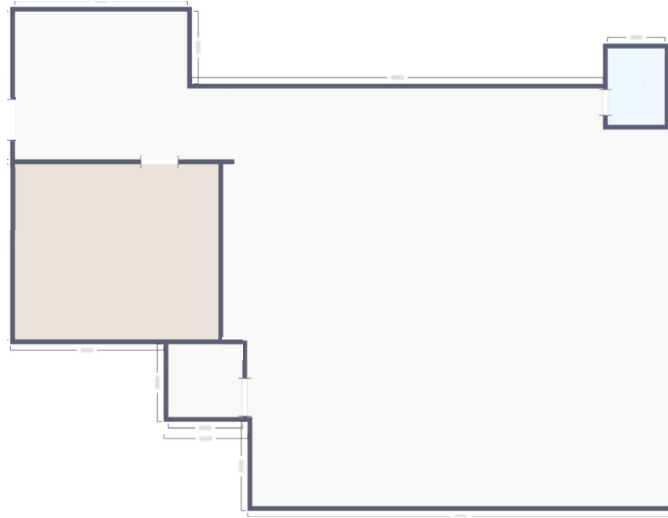
**Keane Omaye-Backman**

Lic. (RS) 76415  
keane@pacificpropertygrouphawaii.com  
(808) 292-6861

**Peter Grossman**

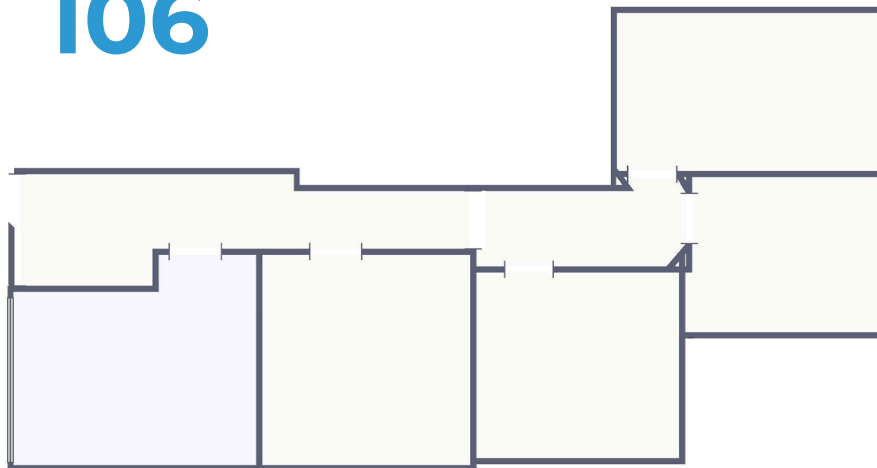
Lic. (RS) 68843  
peter@pacificpropertygrouphawaii.com  
(808) 282-0086

# UNIT 103



Suite Number	Square Footage	Type	Est. Price per Month*	Description
103	1,543	Retail	\$7,329.25	Office/Retail space with open floor plan. Features a kitchenette area with sink, storage closet, single restroom with vanity, and conference room.

# UNIT 106



Suite Number	Square Footage	Type	Est. Price per Month*	Description
106	721	Retail	\$3,605.00	4 Private offices with connecting hallway. Retail space with signage.

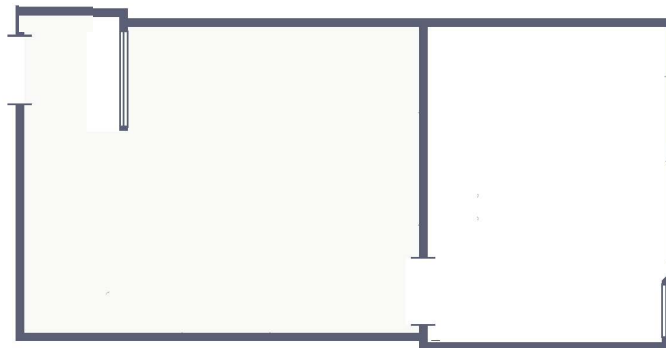
\*Does not include Hawaii General Excise Tax. This is an estimate of base rent and CAM costs per month.

# UNIT 110A



Suite Number	Square Footage	Type	Est. Price per Month*	Description
110A	678	Retail	\$4,068.00	Ground floor retail space with two sinks, and bathroom with shower.

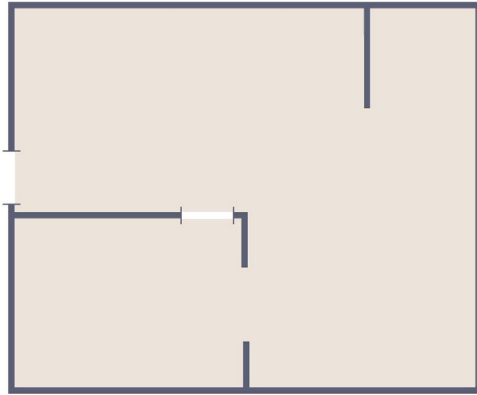
# UNIT 302A



Suite Number	Square Footage	Type	Est. Price per Month*	Description
302A	361	Office	\$1,263.50	Turnkey 3rd Floor updated office space with private office with ocean view. Comes furnished with cubicles.

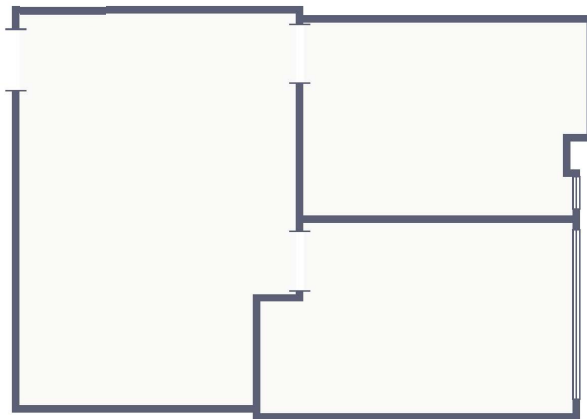
\*Does not include Hawaii General Excise Tax. This is an estimate of base rent and CAM costs per month.

# UNIT 303



Suite Number	Square Footage	Type	Est. Price per Month*	Description
303	606	Office	\$2,121.00	Turnkey Open office area with 2 cubicles and work space with team connect area overlooking ocean. Private office est. 56 SF.

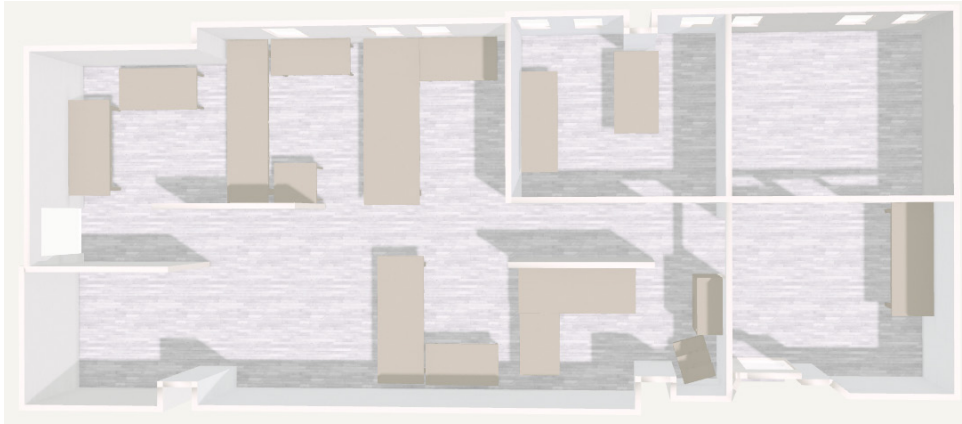
# UNIT 304



Suite Number	Square Footage	Type	Est. Price per Month*	Description
304	507	Office	\$1,521.00	Office space with 2 private offices and and one shared area.

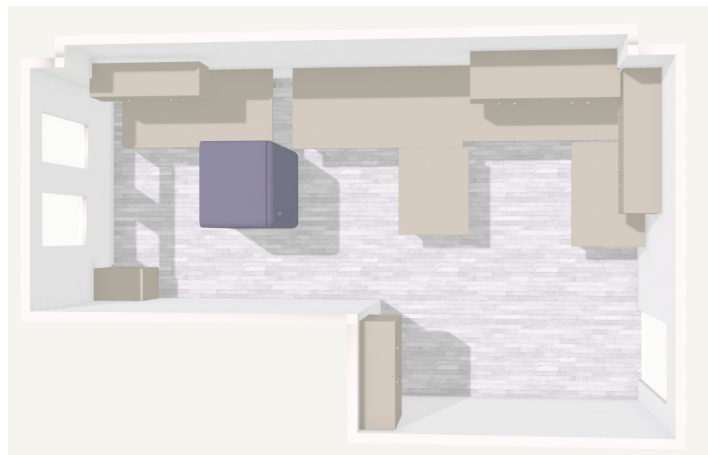
\*Does not include Hawaii General Excise Tax. This is an estimate of base rent and CAM costs per month.

# UNIT 316



Suite Number	Square Footage	Type	Est. Price per Month*	Description
316	1,197	Office	\$4,189.50	Large office space with private offices. Comes furnished. Two entrances.

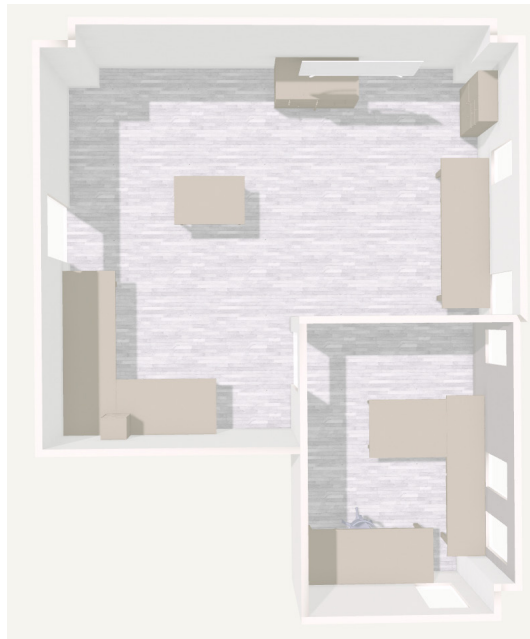
# UNIT 319



Suite Number	Square Footage	Type	Est. Price per Month*	Description
319	250	Office	\$950.00	Office space with general bullpen area and private office. Comes furnished.

\*Does not include Hawaii General Excise Tax. This is an estimate of base rent and CAM costs per month.

# UNIT 320



Suite Number	Square Footage	Type	Est. Price per Month*	Description
320	511	Office	\$1,788.50	Office space with large open space and private office. Comes furnished.

# UNIT 324



Suite Number	Square Footage	Type	Est. Price per Month*	Description
324	715	Office	\$1,787.50	Office space featuring 3 private offices with a reception area.

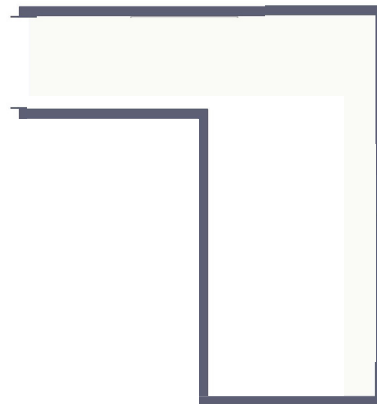
\*Does not include Hawaii General Excise Tax. This is an estimate of base rent and CAM costs per month.

# UNIT 325



Suite Number	Square Footage	Type	Est. Price per Month*	Description
325	797	Office/Medical	\$2,391.00	This space used to be a medical office. It features a reception/waiting room, private restroom, water line for sink, 4 private patient rooms, and a book keeping area.

# UNIT 328



Suite Number	Square Footage	Type	Est. Price per Month*	Description
328	129	Office	\$387.00	Office space that is a slender L shape. No windows in this unit.

\*Does not include Hawaii General Excise Tax. This is an estimate of base rent and CAM costs per month.