



FOR LEASE



SUITE 1 - 25,282 s.f.

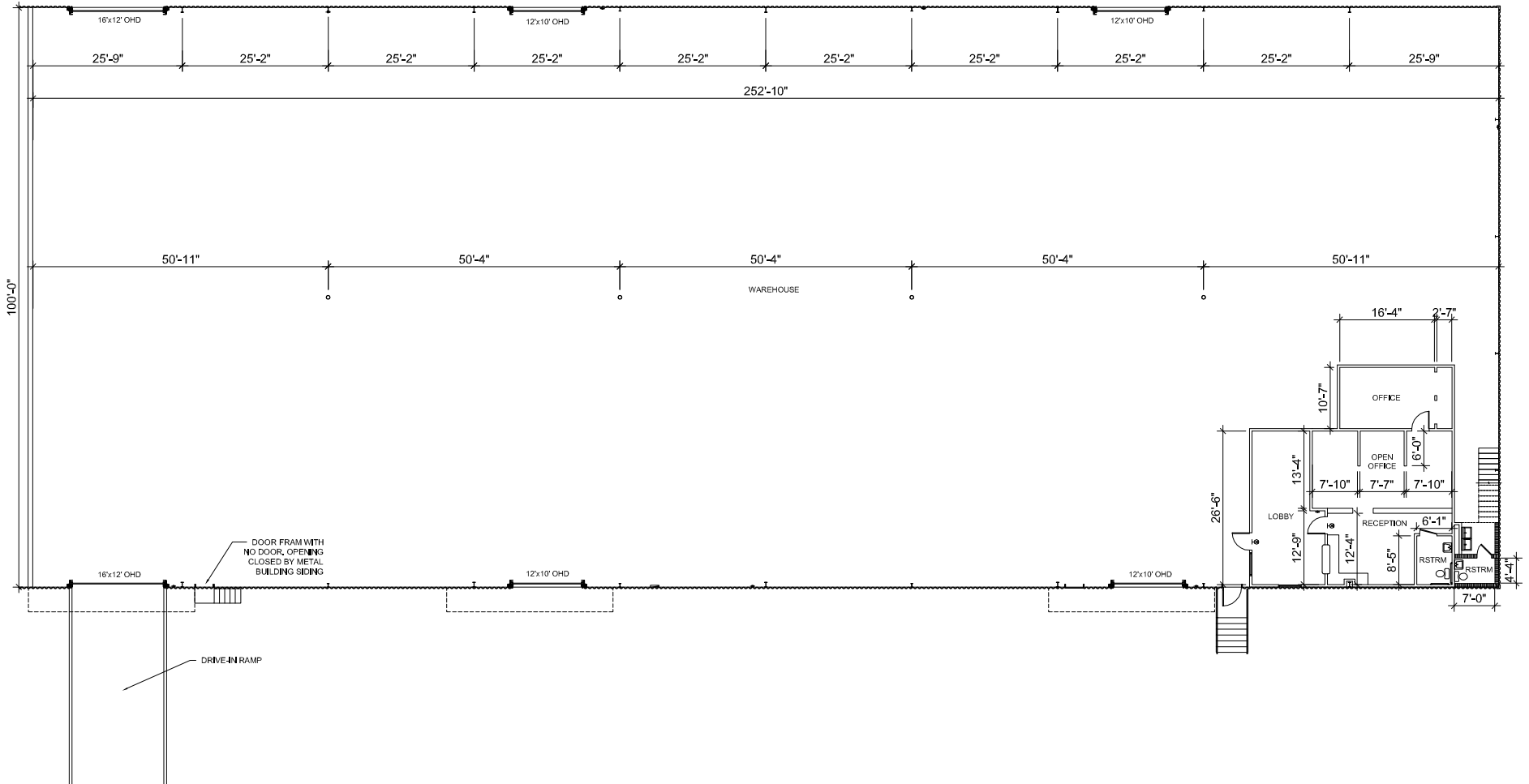
Shader Industrial Park

2517 Shader Road

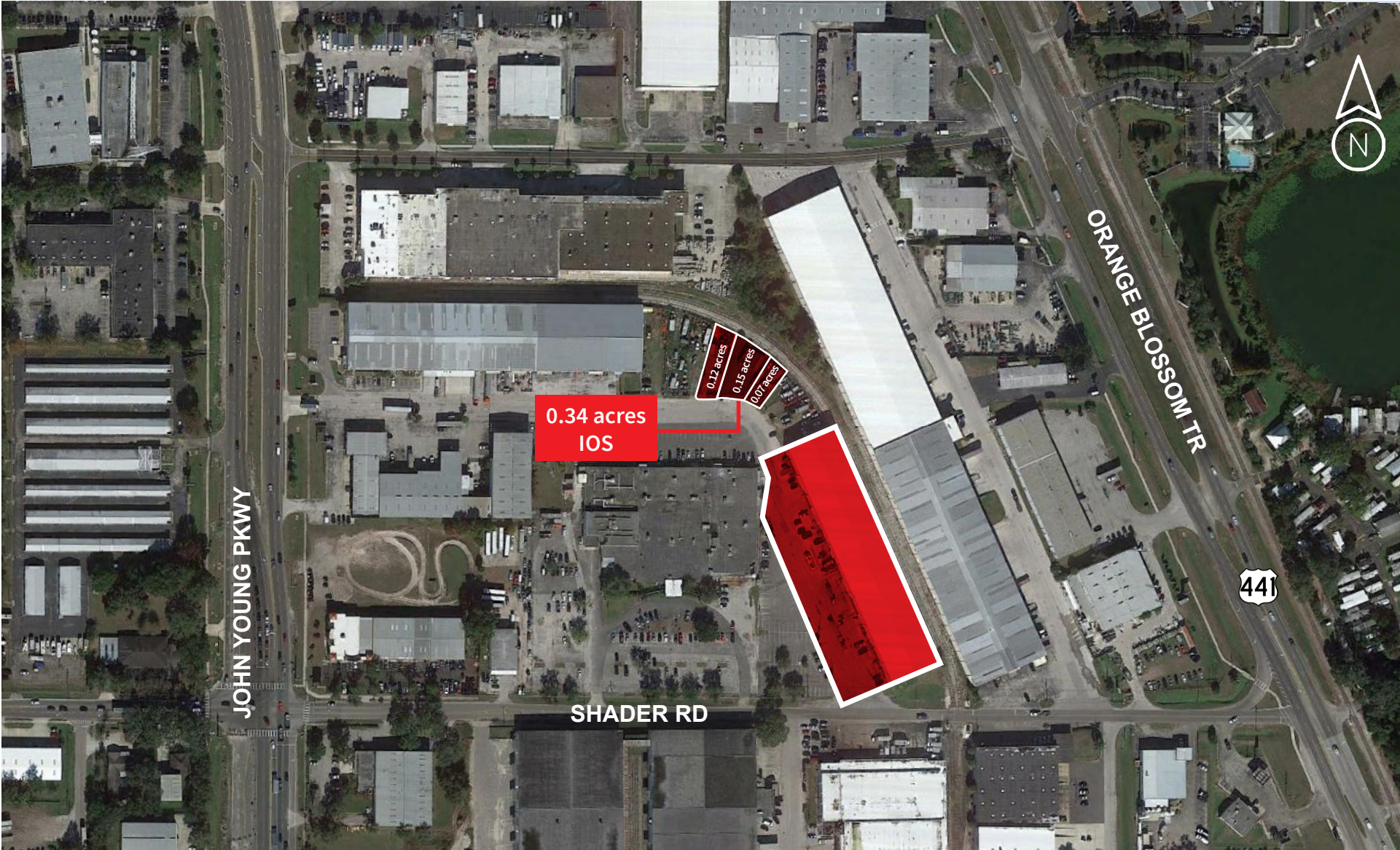
Orlando, Florida 32808

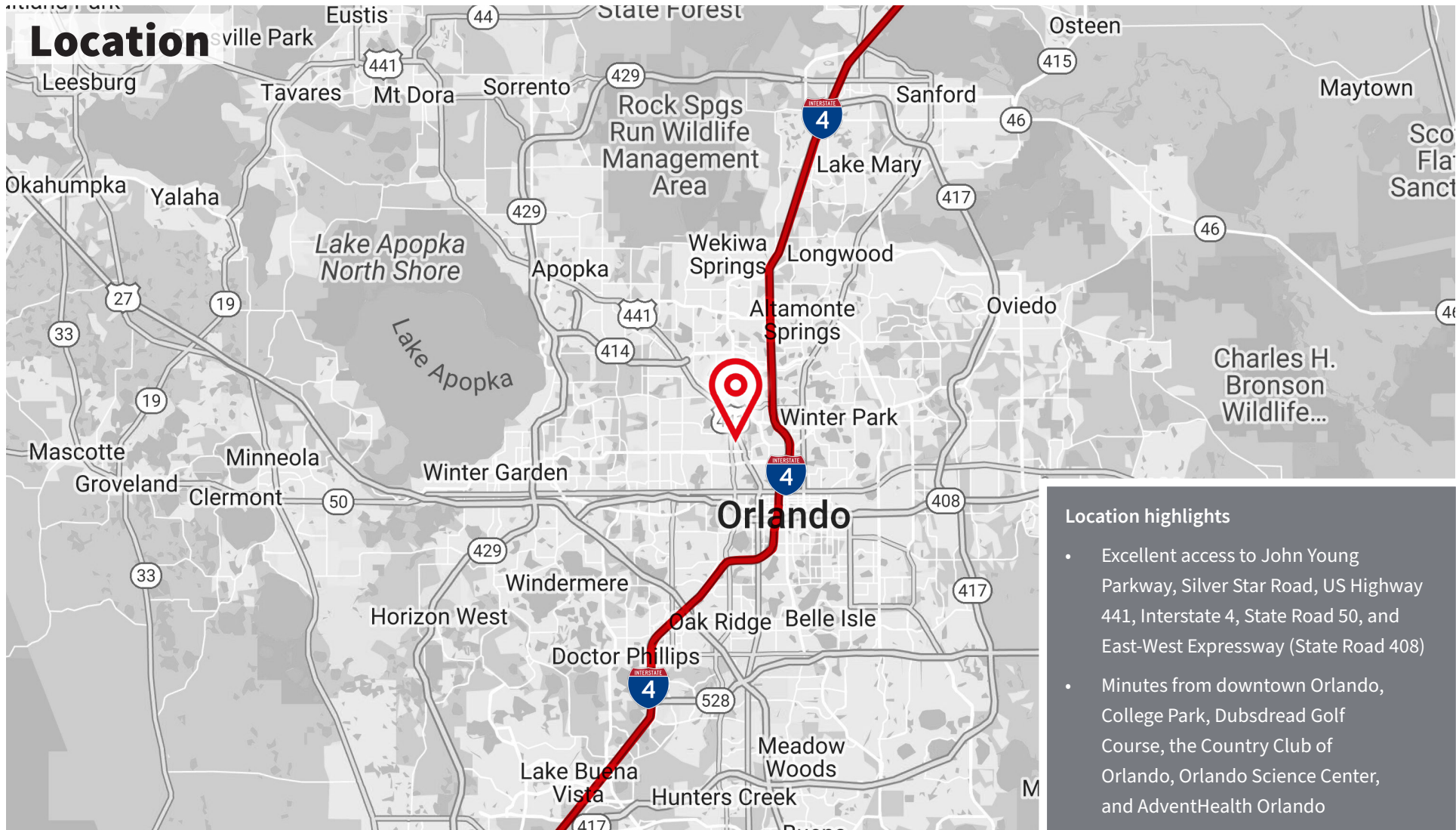
Property specifications

Building size	51,900 s.f.	Drive in	1	Zoning	I-P/W, City of Orlando
Available s.f.	25,282 s.f.	Clear height	23'-28'	Outside storage	0.34 acres
Office	1,213 s.f.	Building depth	100'	Available	January 1, 2027
Dock doors	2 - 12' x 10'	Sprinklers	Yes	Lease rate	Please call for pricing



Property aerial





Contact

Cameron Montgomery
 Executive Vice President
 +1 407 982 8650
cameron.montgomery@jll.com



Although information has been obtained from sources deemed reliable, JLL does not make any guarantees, warranties or representations, express or implied, as to the completeness or accuracy as to the information contained herein. Any projections, opinions, assumptions or estimates used are for example only. There may be differences between projected and actual results, and those differences may be material. JLL does not accept any liability for any loss or damage suffered by any party resulting from reliance on this information. If the recipient of this information has signed a confidentiality agreement with JLL regarding this matter, this information is subject to the terms of that agreement. ©2023. Jones Lang LaSalle IP, Inc. All rights reserved.