

FOR LEASE

916 COMMERCE CIRCLE, HANAHAN, SC 29410



RAIL SERVED AND FULLY AIR-CONDITIONED
±80,000 SF WITH $\frac{3}{4}$ ACRE PAVED YARD



916 COMMERCE CIRCLE, HANAHAN, SC 29410

BUILDING SPECIFICATIONS

BUILDING (SQ. FT.)
±80,000 SF

SITE SIZE
4.14 ACRES

OFFICE SF
1,600 SF

CLEAR HEIGHT
18.5' - 24'

COLUMN SPACING
25' X 40'
25' X 80' CENTERLINE BAY

FLOORING
EPOXY

HVAC
**FULLY AIR
CONDITIONED**

DOCK DOORS
8 DOCK POSITIONS

DRIVE-IN DOORS
3 (14' X 14')

RAIL DOORS - CSX
2 DOCK DOORS

SPRINKLERS
WET SYSTEM

OUTDOOR STORAGE
**0.75 ACRES - PAVED
& FENCED**

LIGHTING
LED

BACK UP GENERATOR
**KOHLER
INDUSTRIAL**



AERIAL VIEW



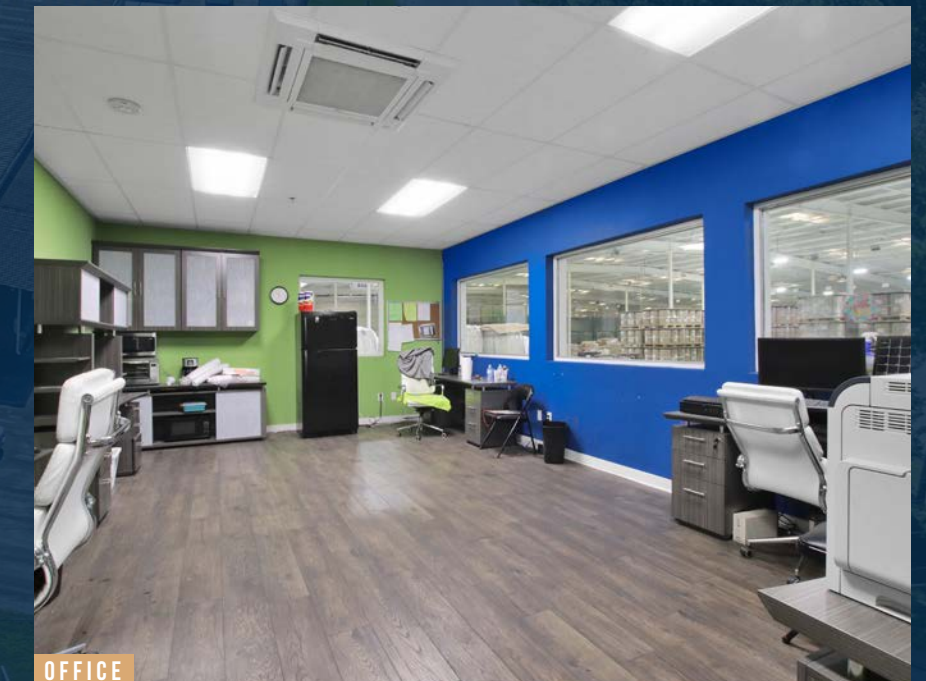
COVERED LOADING DOCK



WAREHOUSE



RAIL DOCK



OFFICE

916 COMMERCE CIRCLE,
HANAHAN, SC 29410

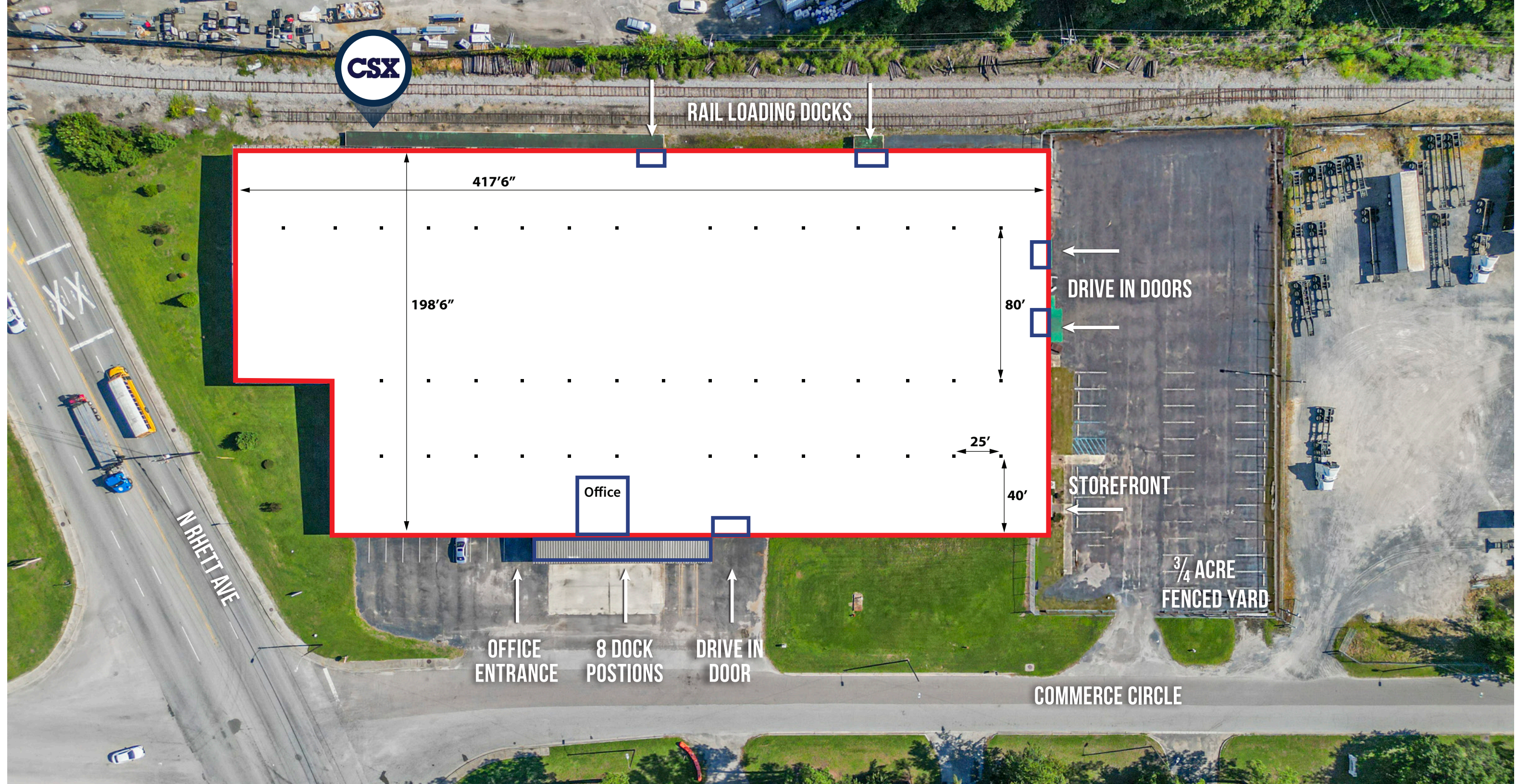
SITE PLAN

New ownership implementing building upgrade plan, including office refresh, exterior painting, and parking lot reseal.



916 COMMERCE CIRCLE,
HANAHAN, SC 29410

FLOOR PLAN



916 COMMERCE CIRCLE, HANAHAN, SC 29410

SUPERIOR ACCESS TO CHARLESTON MARKET

DISTANCE TO INTERSTATES AND SC PORTS

<1

miles to I-526

1

mile to North
Charleston Terminal

3

miles to I-26

3

miles to Leatherman
Terminal

55

miles to I-95

10

miles to Wando Welch
Terminal



916 COMMERCE CIRCLE

916 COMMERCE CIRCLE, HANAHAN, SC 29410

HIGHLIGHTS



916 COMMERCE CIRCLE

CONTACT US

TYLER SMITH

Vice President

tyler.smith@jll.com

+1 843 805 5118

LEE ALLEN

Vice Chairman

lee.allen@jll.com

+1 843 805 5111

KEVIN COATS

Senior Managing Director

kevin.coats@jll.com

+1 843 805 5110



Although information has been obtained from sources deemed reliable, neither Owner nor JLL makes any guarantees, warranties or representations, express or implied, as to the completeness or accuracy as to the information contained herein. Any projections, opinions, assumptions or estimates used are for example only. There may be differences between projected and actual results, and those differences may be material. The Property may be withdrawn without notice. Neither Owner nor JLL accepts any liability for any loss or damage suffered by any party resulting from reliance on this information. If the recipient of this information has signed a confidentiality agreement regarding this matter, this information is subject to the terms of that agreement. ©2025 Jones Lang LaSalle IP, Inc. All rights reserved.