

FOR LEASE: FIRST GENERATION FLEX/WAREHOUSE SPACE

WRIGHTSBORO BUSINESS PARK | 2400 CASTLE HAYNE ROAD

WILMINGTON, NC | NEW HANOVER COUNTY





SUMMARY

Wrightsboro Business Park is located just south of the intersection of Castle Hayne Road and N. Kerr Avenue, providing efficient access to all parts of the Greater Wilmington area. The project will encompass a total of 91,500 SF between 17 buildings at full completion. The first four buildings (5,100 SF each) will be delivered in late 2025 or early 2026.

Each building will be delivered with approximately 980 SF of fully-finished office space consisting of an open showroom/reception area, two private offices, breakroom and two restrooms (one in the office and one in the warehouse). Each building will also come with the use of 3,500 +/- SF of dedicated yard and additional parking area for exclusive use by each tenant.

The site is zoned B-2 by New Hanover County, with a small portion of the property being zoned O&I. Buildings 14, 15, 16, & 17 will be delivered in the first phase, with buildings 15, 16 & 17 fronting Castle Hayne Road.

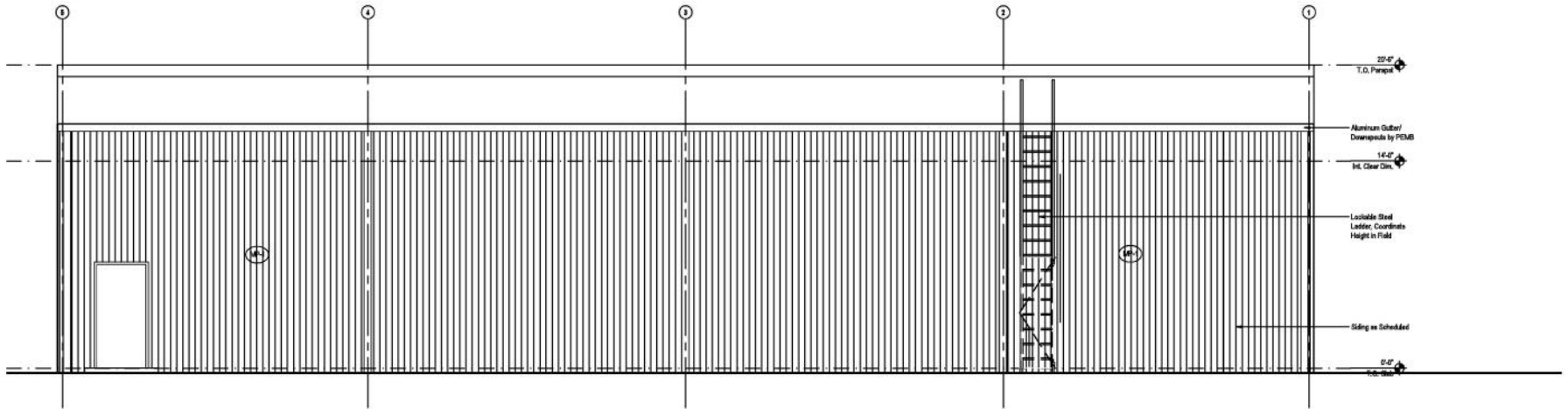


ADDRESS	Wrightsboro Business Park 2400 Castle Hayne Road Wilmington, NC 28429 New Hanover County
FUTURE ADDRESS	2704, 2708, 2712, & 2724 Castle Creek Lane Wilmington, NC 28429 New Hanover County
AVAILABLE SF	Each building in the first phase is a total of 5,100 SF with dedicated yard space. The interior buildout will consist of approximately 980 SF of fully finished office space with a reception area, two private offices, breakroom, and two restrooms, with the remainder in unconditioned warehouse space.
LEASE RATE	\$16.00/SF NNN
ZONING	B-2 (New Hanover County) & partially O & I (Office and Institutional)
AVAILABLE	Late 2025/ Early 2026

CONSTRUCTION PROGRESS

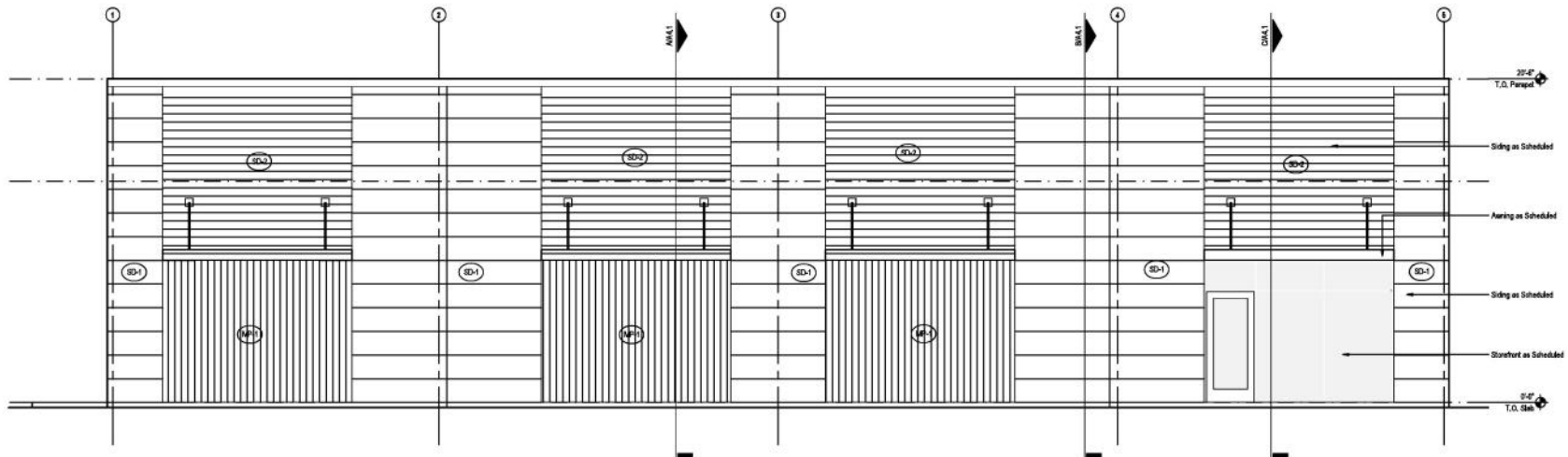


EXTERIOR ELEVATION



Rear Elevation

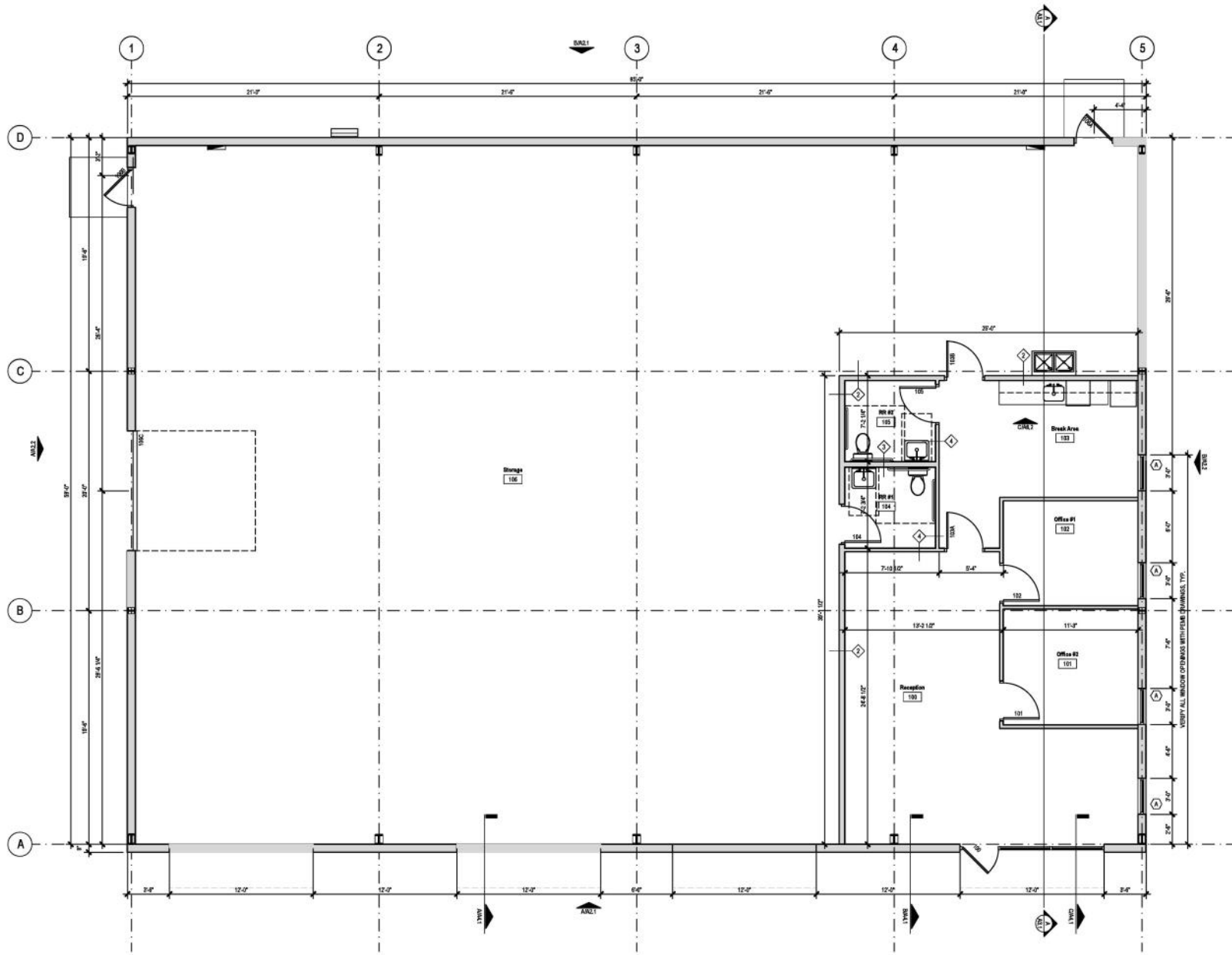
B
1/4"



Front Elevation

A
1/4"

FLOOR PLAN



Floor Plan

A
1/4"

GIS AERIAL

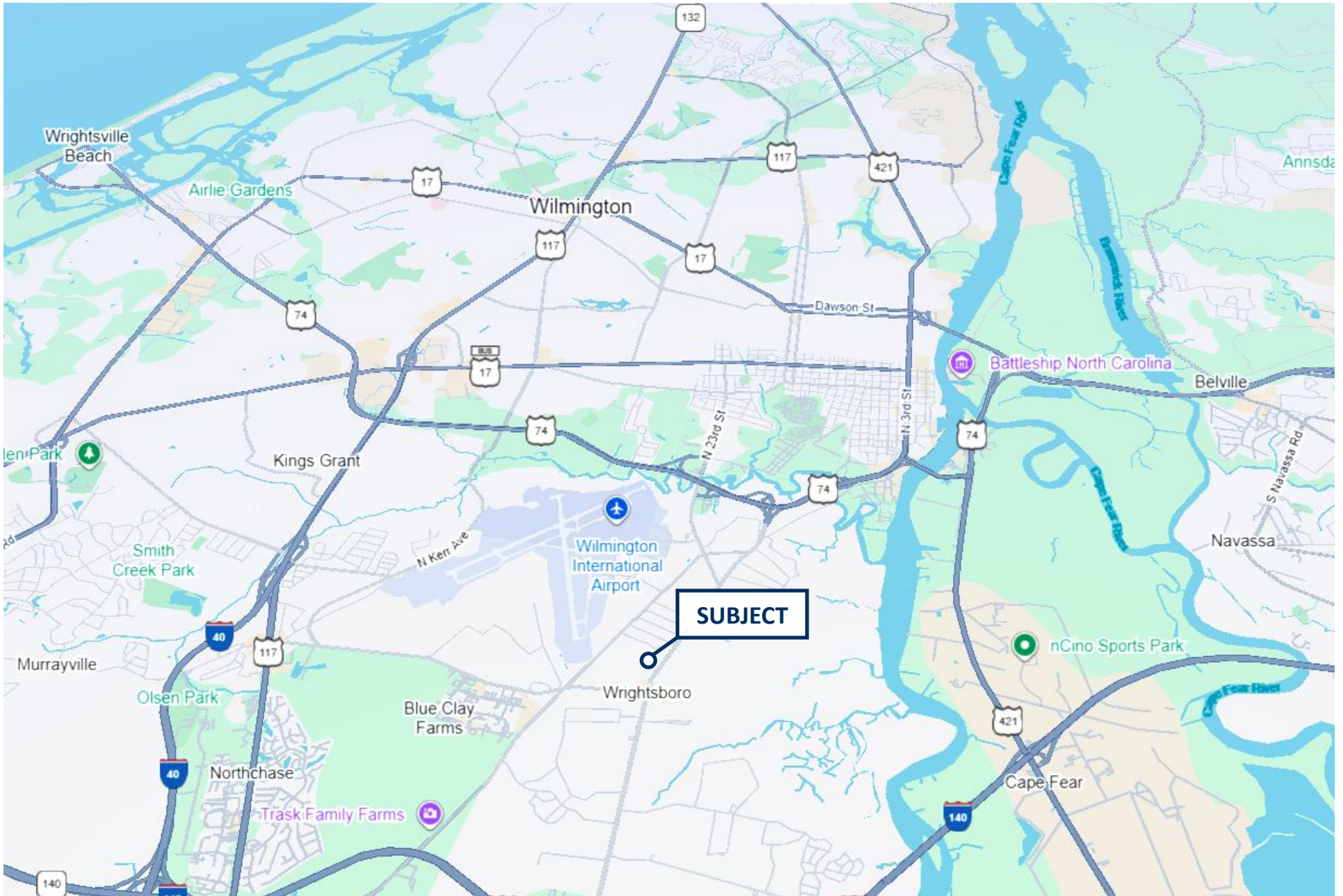




AERIAL MAP



LOCATION MAP





Cape Fear Commercial

WILL LEONARD, SIOR

Senior Vice President

910.344.1015 direct

910.233.5351 mobile

wleonard@capefearcommercial.com



102 Autumn Hall Drive | Suite 210 | Wilmington, NC 28403
capefearcommercial.com

© 2023 Cape Fear Commercial, LLC. All rights reserved. The information contained in the following Marketing Brochure is proprietary and strictly confidential. It is intended to be reviewed only by the party receiving it from Cape Fear Commercial and should not be made available to any other person or entity without the written consent of Cape Fear Commercial. This Marketing Brochure has been prepared to provide summary, unverified information to prospective purchasers, and to establish only a preliminary level of interest in the Subject property. The information contained herein is not a substitute for a thorough due diligence investigation. Cape Fear Commercial has not made any investigation, and makes no warranty or representation, with respect to the income or expenses for the Subject property, the future projected financial performance of the property, the size and square footage of the property and improvements, the presence or absence of contaminate substances, PCB's or asbestos, the compliance with State and Federal regulations, the physical condition of the improvements thereon, or the financial condition or the business prospects of any tenant's plans or intentions to continue its occupancy of the Subject property. The information contained in this Marketing Brochure has been obtained from sources we believe to be reliable; however, Cape Fear Commercial has not verified, and will not verify, any of the information contained herein, nor has Cape Fear Commercial conducted any investigation regarding these matters and makes no warranty or representation whatsoever regarding the accuracy or completeness of the Information provided. All potential buyers must take appropriate measures to verify all of the information set forth herein.