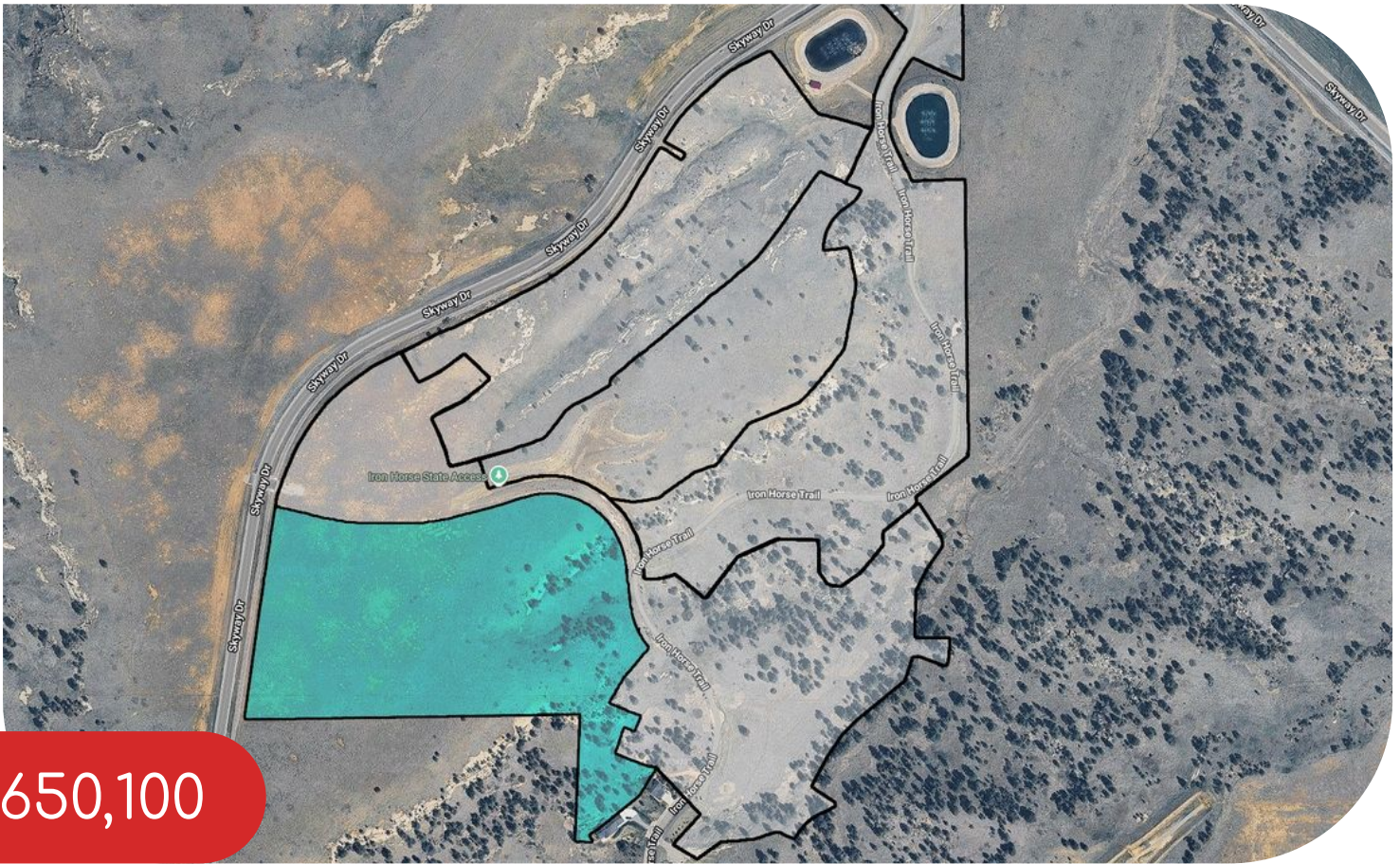


For Sale

Lots And Land  21.670 acre



\$650,100

Parcel 3 Skyway Drive • Billings, MT 59106



Development possibility East of Skyway Dr & North of Rehberg Ranch Estates! Water & Sewer are near by. Prime development piece in the 59106 zip code. More development land adjacent available. Be a part of the new development on top of the Rims! All sales subject to the final recording of the Amended COS. Parcel size is adjustable. Call agents for details.

All info from 3rd party sources & deemed reliable. Info subject to change & not guaranteed or warranted. Buyer & buyer's agent to verify all info.

CONTACT ME FOR MORE DETAILS OR TO SCHEDULE A TOUR.



Pat Schindele

406-591-2551

www.patschindele.com

pat@patschindele.com

Co-Lister: Myles Egan
406-591-2551

Each Office Is Independently Owned and Operated

ps
PAT SCHINDELE

kw YELLOWSTONE
PROPERTIES
KELLERWILLIAMS.

