

10500 Fountains Drive

Maple Grove, MN

Key Facts

Property type	Industrial space
Building size	262,820 SF
Space available	36,842 - 89,730 SF



Contact Us

Learn more about this property or schedule a tour by reaching out to our local investment and leasing officer.

Alex Olsen

+1 (380) 799-0452

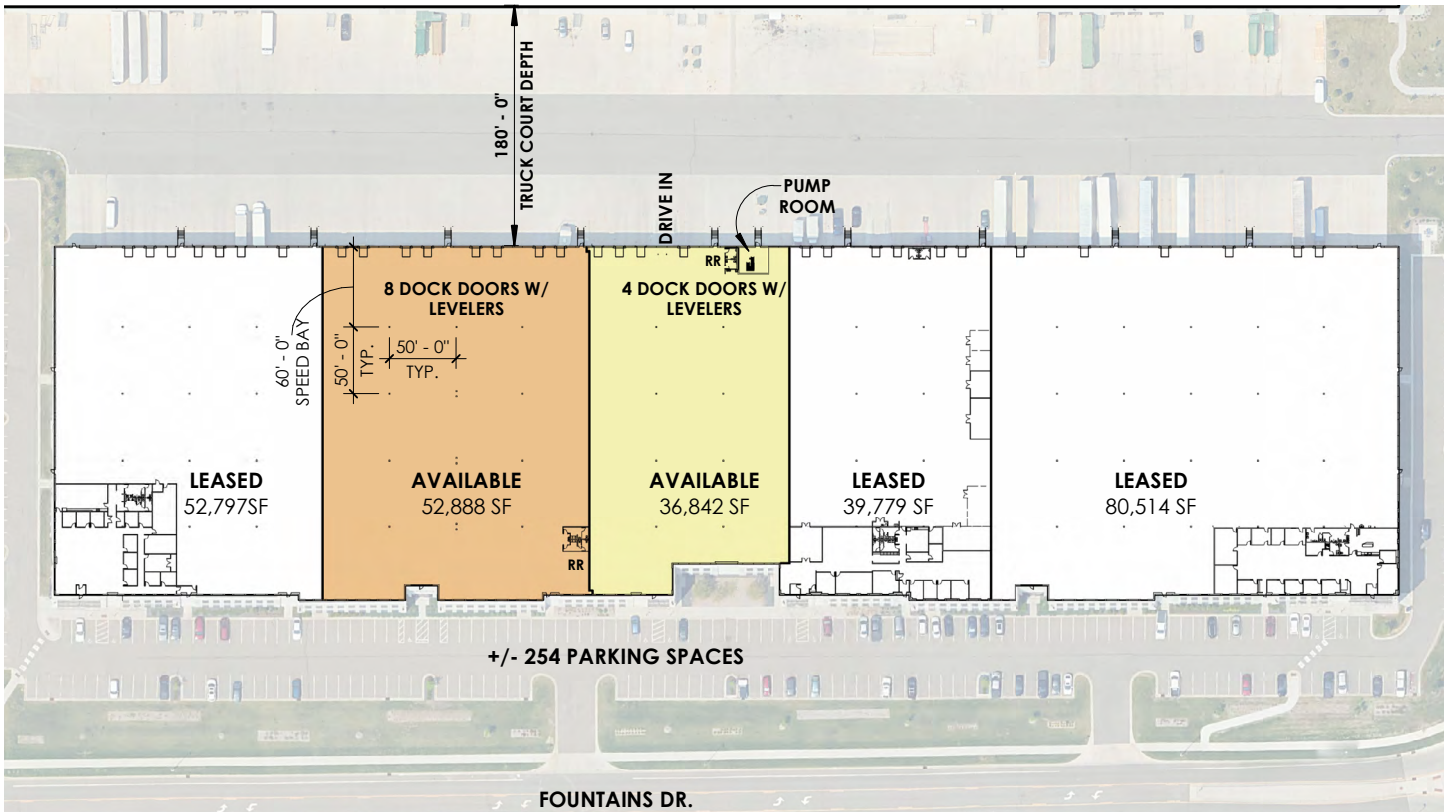
alex.olsen@eqtpartners.com

10500 Fountains Drive

Maple Grove, MN

BUILDING SPECIFICATIONS

Industrial Space
Total Building Size: 262,820 SF
Building Space Available: 36,842 - 89,730 SF
Clear Height: 32'
Constructed: 2018
Exterior Docks: 12
Drive-In Door: 1
Column Spacing: 50'x 50'
Located in Arbor Lakes Industrial Park
Fire Protection: ESFR sprinkler system



Contact Us

Learn more about this property or schedule a tour by reaching out to our local investment and leasing officer.

Alex Olsen

+1 (380) 799-0452

alex.olsen@eqtpartners.com