

FOR LEASE

Office/retail in the heart of 6th Avenue Business District



This image has been modified from its original form

2411-B 6th Avenue

Tacoma, WA

Prominent storefront positioned along Tacoma's vibrant 6th Avenue.

PROPERTY HIGHLIGHTS

- + 1,650 Available SF
- + Office or retail
- + Rear suite access and parking
- + Tenant building signage
- + NCX-Neighborhood Commercial Mixed Use Zoning
- + Close to University of Puget Sound, local hospitals and Tacoma CBD

KIM MARVIK

Partner
+1 253 203 1325
kmarvik@nai-psp.com



THE INFORMATION CONTAINED HEREIN HAS BEEN GIVEN TO US BY THE OWNER OF THE PROPERTY OR OTHER SOURCES WE DEEM RELIABLE, WE HAVE NO REASON TO DOUBT ITS ACCURACY, BUT WE DO NOT GUARANTEE IT. ALL INFORMATION SHOULD BE VERIFIED PRIOR TO PURCHASE OR LEASE.

TOTAL SF

1,650 SF

PRICE/SF

\$22.50 PSF, NNN



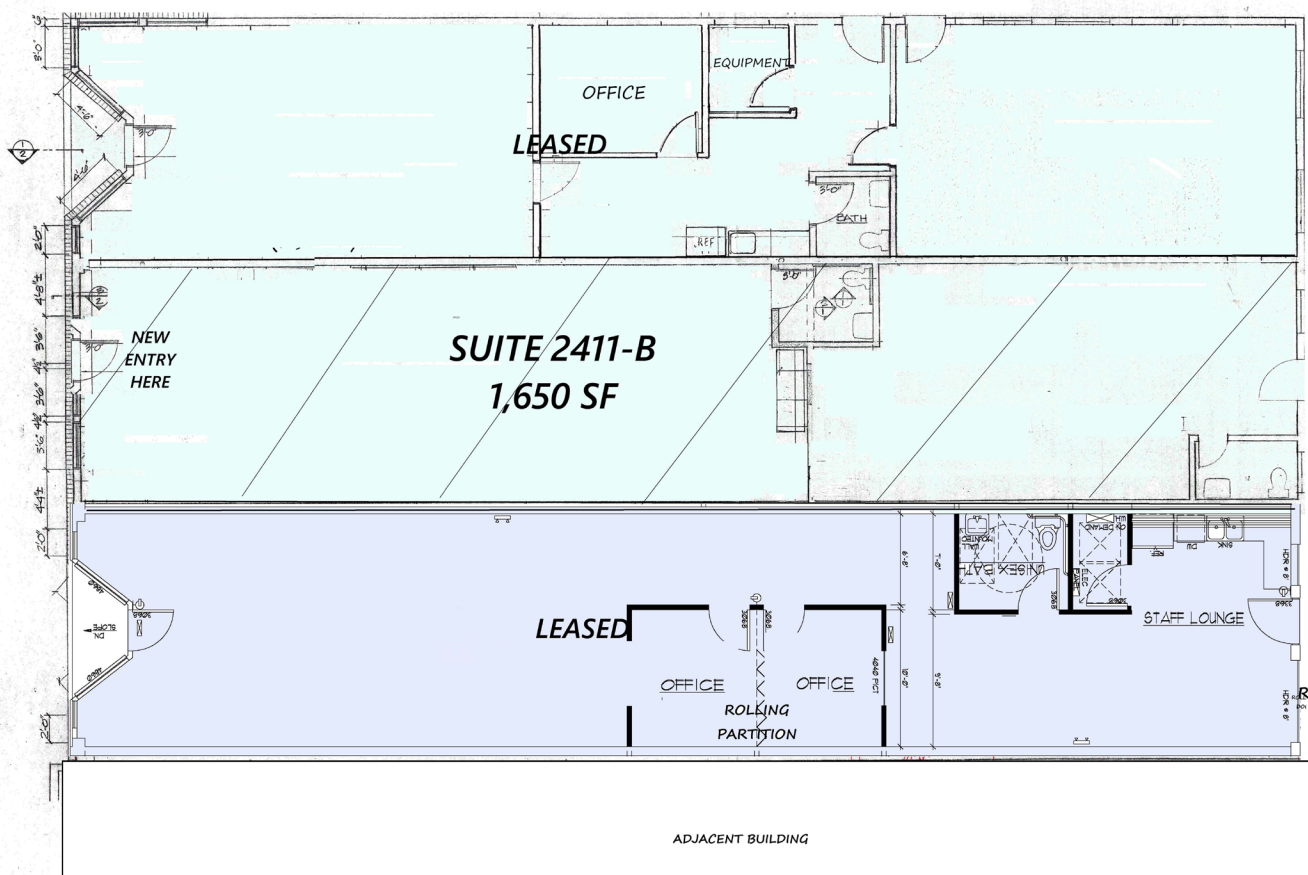
nai-psp.com



NORTH PROSPECT STREET

2407 - 2411 6TH AVENUE - office/retail

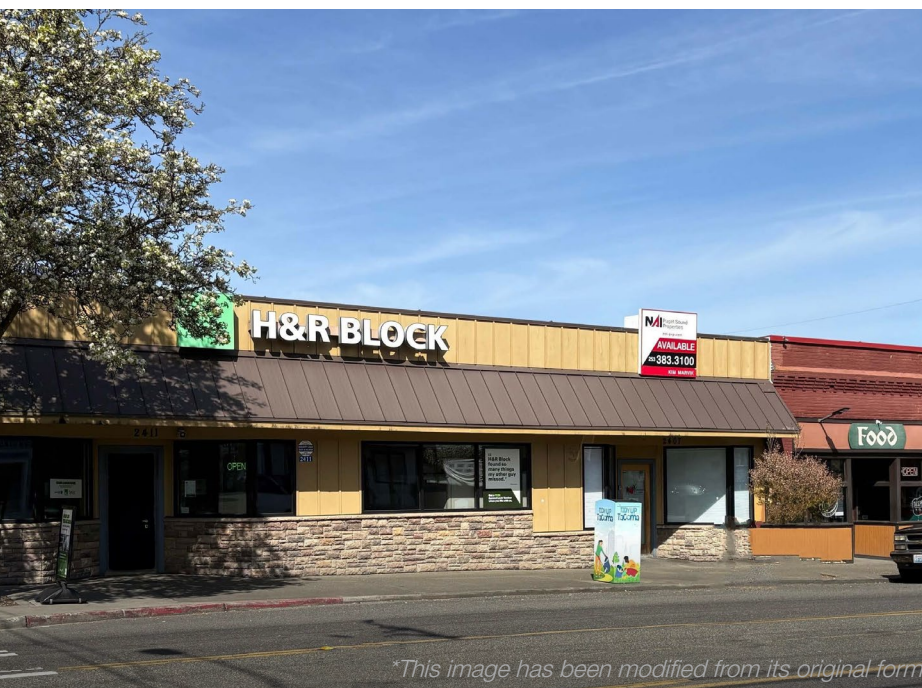
EXISTING WALKWAY



KIM MARVIK
 Partner
 +1 253 203 1325
 kmarvik@nai-psp.com



Retailer Map



**This image has been modified from its original form*

Tacoma's 6th Avenue Business District is a vibrant commercial corridor known for its diverse mix of shops, restaurants, bars, and entertainment venues.

KIM MARVIK
Partner
+1 253 203 1325
kmarvik@nai-psp.com



Demographics



2407 - 2411 6TH AVENUE

	1 MILE	3 MILES	5 MILES
Population	26,189	113,729	249,615
2029 Population	27,125	119,774	259,129
Households	11,097	50,532	102,037
Median Age	35.3	37.7	38.6
Median HH Income	\$90,071	\$81,122	\$86,418

91

WALK SCORE

70

BIKE SCORE

KIM MARVIK

Partner
+1 253 203 1325
kmarvik@nai-psp.com

