

VALLEY GATEWAY BUSINESS PARK

UNIT B

15624 Roxford St.

SYLMAR | CALIFORNIA

15624 B

± 27,827 SF INDUSTRIAL - FOR LEASE

CHRIS SULLIVAN

EXECUTIVE VICE PRESIDENT

P: 818.449.1628

chris.sullivan@daumcommercial.com

DRE License: #00914977

DAUM
COMMERCIAL REAL ESTATE SERVICES

15624 UNIT B Roxford St.

SYLMAR | CALIFORNIA

PROPERTY HIGHLIGHTS



±27,827 SF Available



±2,340 SF Office Space



M2-1 Zoning



28' Clear Height



2 Dock High Doors/1 Grade Level Door



Sprinklered



Abundant Parking



Possession - Vacant



Great Window Line



Easy Freeway Access to 5, 405, 118, 210, & 14



Corporate Image



ABOUT THE PROPERTY



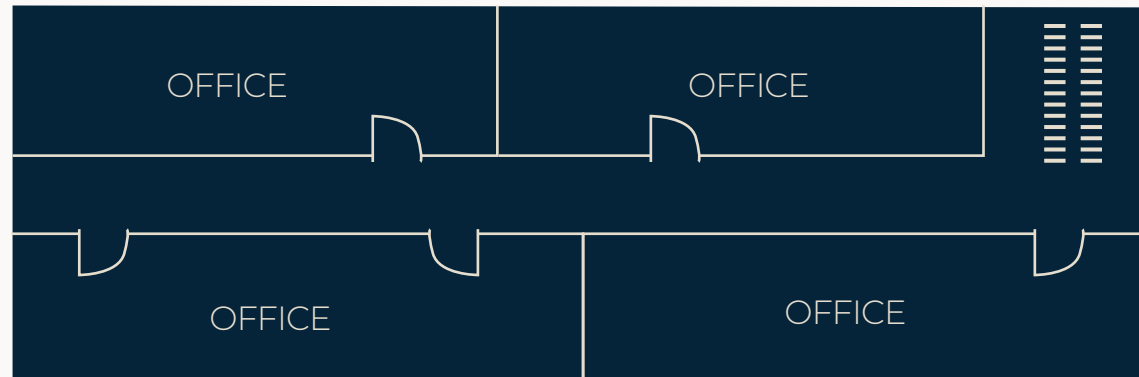
15624 Roxford St.

UNIT B

SYLMAR | CALIFORNIA



2ND FLOOR OFFICE



LOCATION MAP



15624 UNIT B Roxford St.

SYLMAR | CALIFORNIA

LOCATION



ADJACENT TO THE 5,
405, 118, 210, & 14 FWY



**35 MINUTES
FROM DTLA**



LOS ANGELES
INTERNATIONAL AIRPORT
16 MIN | 11.5 MI

BOB HOPE AIRPORT
37 MIN | 28.6 MI



SYLMAR/SAN FERNANDO
5 MIN DRIVE
2.3 MIN WALK

NEWHALL
12 MIN DRIVE
7.8 MIN WALK

