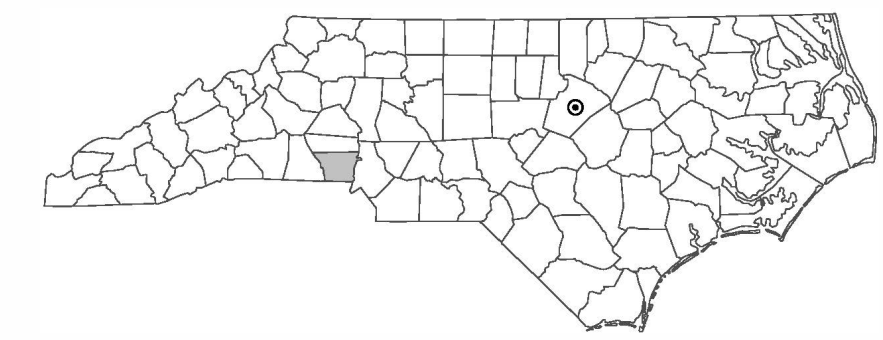
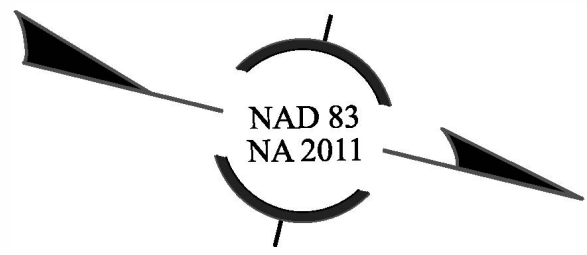


STATE	STATE PROJECT REFERENCE NO.	SHEET NO.	TOTAL SHEETS
N.C.	U-5961	1	
STATE PROJ. NO.	F.A. PROJ. NO.	DESCRIPTION	
45975.1.1	N/A	PE	



INCOMPLETE PLANS
DO NOT USE FOR R/W ACQUISITION

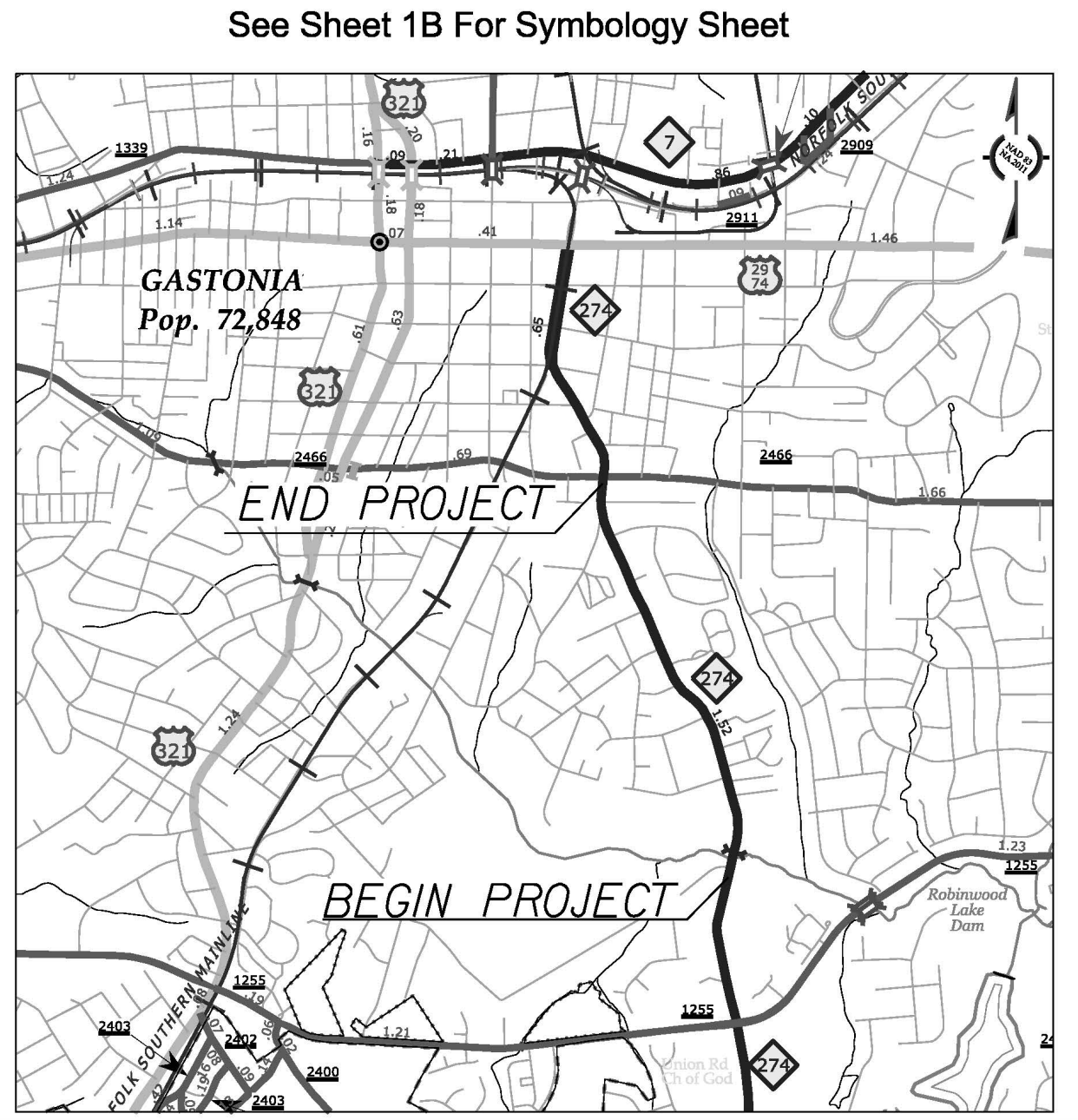
DOCUMENT NOT CONSIDERED FINAL
UNLESS ALL SIGNATURES COMPLETED



STATE OF NORTH CAROLINA DIVISION OF HIGHWAYS

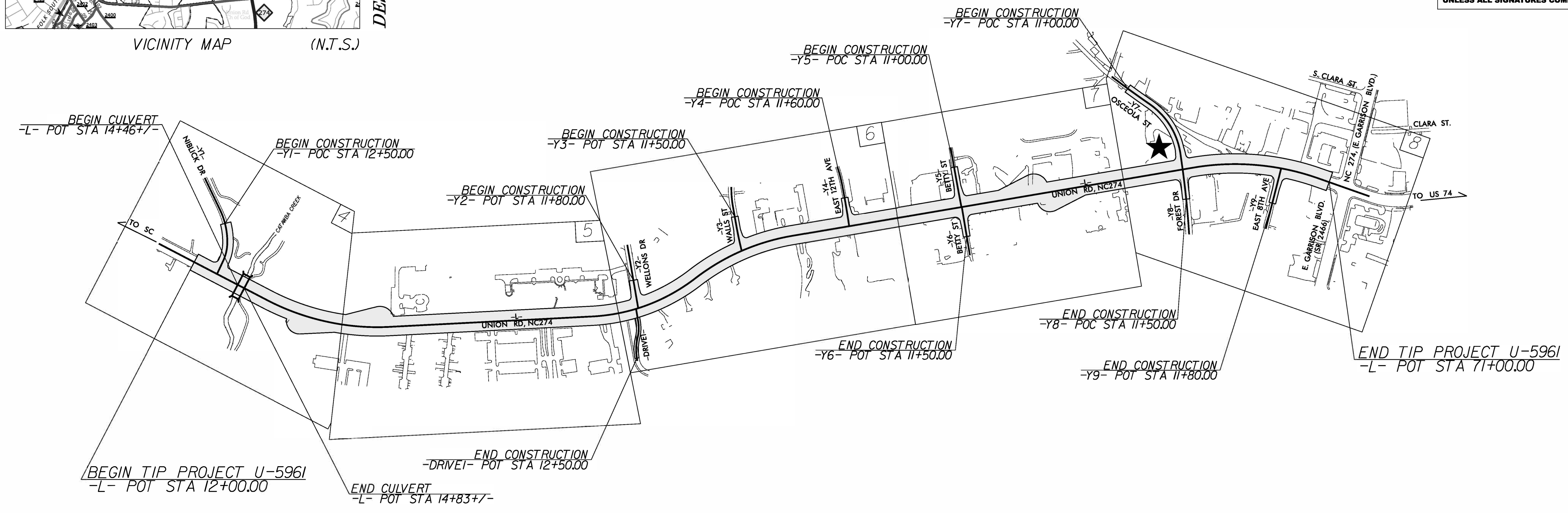
GASTON COUNTY

LOCATION: *NC 274 UNION ROAD FROM NIBLICK DR TO OSCEOLA ST*
 TYPE OF WORK: *GRADING, DRAINAGE, PAVING, CULVERT, AND WIDENING*



VICINITY MAP (N.T.S.)

DESIGN RECOMMENDATION PLAN SET

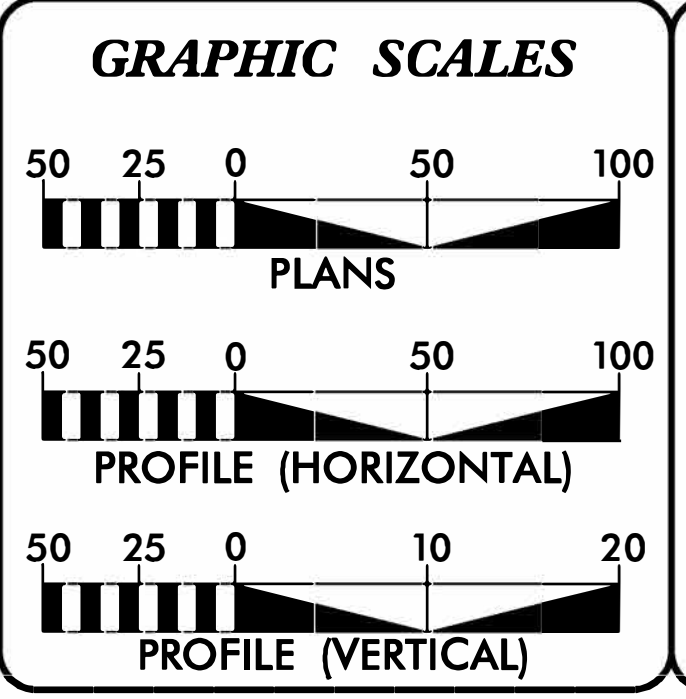


THIS IS A PARTIAL CONTROLLED ACCESS PROJECT WITH ACCESS BEING LIMITED TO POINTS SHOWN ON PLANS.
 THIS PROJECT IS WITHIN THE MUNICIPAL BOUNDARIES OF THE CITY OF GASTONIA.
 CLEARING ON THIS PROJECT SHALL BE PERFORMED TO THE LIMITS ESTABLISHED BY METHOD _



TIP PROJECT: U-5961

CONTRACT:



DESIGN DATA	
ADT 2027 =	20,300
ADT 2047 =	24,735
K =	10 %
D =	55 %
T =	4 % *
V =	50 MPH
* TTST = 1% DUAL 3%	
FUNC CLASS =	
PRINCIPAL ARTERIAL	
URBAN	

PROJECT LENGTH	
LENGTH OF ROADWAY TIP PROJECT U-5961 =	1.110 Miles
LENGTH OF STRUCTURE TIP PROJECT U-5961 =	0.007 Mile
TOTAL LENGTH TIP PROJECT U-5961 =	1.117 Miles

JMT. Prepared in the Office of:
JOHNSON, MIRMIRAN, & THOMPSON, INC.
 4700 Falls of Neuse Rd, Suite 100
 Raleigh, NC, 27609
 License No. C-3097

2024 STANDARD SPECIFICATIONS

RIGHT OF WAY DATE:
JUNE 30, 2028

LETTING DATE:
NOVEMBER 19, 2030

JOSHUA ROEMER, PE
PROJECT ENGINEER

SAVANNA TAYLOR, E.I.
PROJECT DESIGN ENGINEER

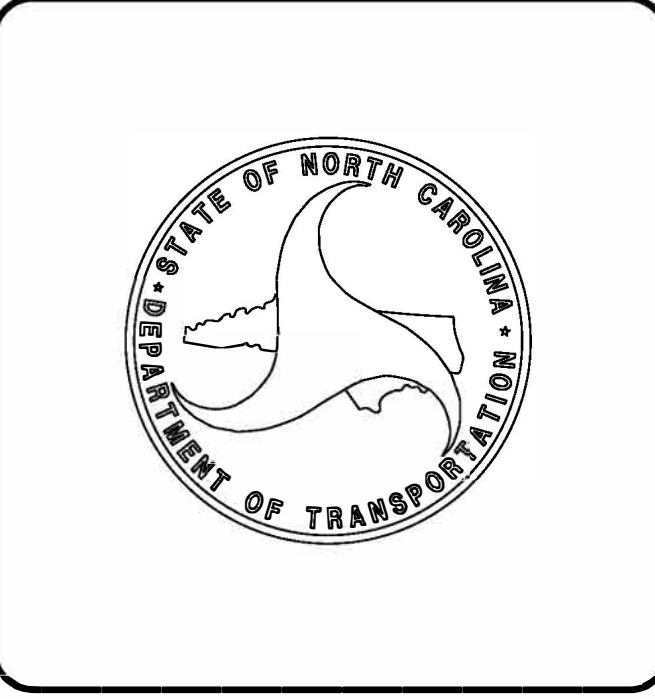
BRYAN K. SOWELL, PE
NCDOT PROJECT ENGINEER

HYDRAULICS ENGINEER

SIGNATURE: _____ P.E.

ROADWAY DESIGN ENGINEER

SIGNATURE: _____ P.E.



\$\$\$\$\$\$ SYSTEM TIME\$\$\$\$\$\$
 \$\$\$\$\$\$ DON\$\$\$\$\$\$
 \$\$\$\$\$\$ USERNAME\$\$\$\$\$\$

Note: Not to Scale

STATE OF NORTH CAROLINA, DIVISION OF HIGHWAYS
CONVENTIONAL PLAN SHEET SYMBOLS

BOUNDARIES AND PROPERTY:

Table listing symbols for boundaries and property: State Line, County Line, Township Line, City Line, Reservation Line, Property Line, Existing Iron Pin (EIP), Computed Property Corner, Existing Concrete Monument (ECM), Parcel / Sequence Number, Existing Fence Line, Proposed Woven Wire Fence, Proposed Chain Link Fence, Proposed Barbed Wire Fence, Existing Wetland Boundary, Proposed Wetland Boundary, Existing Endangered Animal Boundary, Existing Endangered Plant Boundary, Existing Historic Property Boundary, Known Contamination Area: Soil, Potential Contamination Area: Soil, Known Contamination Area: Water, Potential Contamination Area: Water, Contaminated Site: Known or Potential.

BUILDINGS AND OTHER CULTURE:

Table listing symbols for buildings and other culture: Gas Pump Vent or U/G Tank Cap, Sign, Well, Small Mine, Foundation, Area Outline, Cemetery, Building, School, Church, Dam.

HYDROLOGY:

Table listing symbols for hydrology: Stream or Body of Water, Hydro, Pool or Reservoir, Jurisdictional Stream, Buffer Zone 1, Buffer Zone 2, Flow Arrow, Disappearing Stream, Spring, Wetland, Proposed Lateral, Tail, Head Ditch, False Sump.

RAILROADS:

Table listing symbols for railroads: Standard Gauge, RR Signal Milepost, Switch, RR Abandoned, RR Dismantled.

RIGHT OF WAY & PROJECT CONTROL:

Table listing symbols for right of way and project control: Primary Horiz Control Point, Primary Horiz and Vert Control Point, Secondary Horiz and Vert Control Point, Vertical Benchmark, Existing Right of Way Monument, Proposed Right of Way Monument (Rebar and Cap), Proposed Right of Way Monument (Concrete), Existing Permanent Easement Monument, Proposed Permanent Easement Monument (Rebar and Cap), Existing C/A Monument, Proposed C/A Monument (Rebar and Cap), Proposed C/A Monument (Concrete), Existing Right of Way Line, Proposed Right of Way Line, Existing Control of Access Line, Proposed Control of Access Line, Proposed ROW and CA Line, Existing Easement Line, Proposed Temporary Construction Easement, Proposed Temporary Drainage Easement, Proposed Permanent Drainage Easement, Proposed Permanent Drainage/Utility Easement, Proposed Permanent Utility Easement, Proposed Temporary Utility Easement, Proposed Aerial Utility Easement.

ROADS AND RELATED FEATURES:

Table listing symbols for roads and related features: Existing Edge of Pavement, Existing Curb, Proposed Slope Stakes Cut, Proposed Slope Stakes Fill, Proposed Curb Ramp, Existing Metal Guardrail, Proposed Guardrail, Existing Cable Guiderail, Proposed Cable Guiderail, Equality Symbol, Pavement Removal.

VEGETATION:

Table listing symbols for vegetation: Single Tree, Single Shrub, Hedge.

Table listing symbols for existing structures: Woods Line, Orchard, Vineyard.

EXISTING STRUCTURES:

Table listing symbols for existing structures: MAJOR: Bridge, Tunnel or Box Culvert, Bridge Wing Wall, Head Wall and End Wall; MINOR: Head and End Wall, Pipe Culvert, Footbridge, Drainage Box: Catch Basin, DI or JB, Paved Ditch Gutter, Storm Sewer Manhole, Storm Sewer.

UTILITIES:

* SUE - Subsurface Utility Engineering
LOS - Level of Service - A, B, C or D (Accuracy)

POWER:

Table listing symbols for power: Existing Power Pole, Proposed Power Pole, Existing Joint Use Pole, Proposed Joint Use Pole, Power Manhole, Power Line Tower, Power Transformer, U/G Power Cable Hand Hole, H-Frame Pole, U/G Power Line Test Hole (SUE - LOS A)*, U/G Power Line (SUE - LOS B)*, U/G Power Line (SUE - LOS C)*, U/G Power Line (SUE - LOS D)*.

TELEPHONE:

Table listing symbols for telephone: Existing Telephone Pole, Proposed Telephone Pole, Telephone Manhole, Telephone Pedestal, Telephone Cell Tower, U/G Telephone Cable Hand Hole, U/G Telephone Test Hole (SUE - LOS A)*, U/G Telephone Cable (SUE - LOS B)*, U/G Telephone Cable (SUE - LOS C)*, U/G Telephone Cable (SUE - LOS D)*, U/G Telephone Conduit (SUE - LOS B)*, U/G Telephone Conduit (SUE - LOS C)*, U/G Telephone Conduit (SUE - LOS D)*, U/G Fiber Optics Cable (SUE - LOS B)*, U/G Fiber Optics Cable (SUE - LOS C)*, U/G Fiber Optics Cable (SUE - LOS D)*.

WATER:

Table listing symbols for water: Water Manhole, Water Meter, Water Valve, Water Hydrant, U/G Water Line Test Hole (SUE - LOS A)*, U/G Water Line (SUE - LOS B)*, U/G Water Line (SUE - LOS C)*, U/G Water Line (SUE - LOS D)*, Above Ground Water Line.

TV:

Table listing symbols for TV: TV Pedestal, TV Tower, U/G TV Cable Hand Hole, U/G TV Test Hole (SUE - LOS A)*, U/G TV Cable (SUE - LOS B)*, U/G TV Cable (SUE - LOS C)*, U/G TV Cable (SUE - LOS D)*, U/G Fiber Optic Cable (SUE - LOS B)*, U/G Fiber Optic Cable (SUE - LOS C)*, U/G Fiber Optic Cable (SUE - LOS D)*.

GAS:

Table listing symbols for gas: Gas Valve, Gas Meter, U/G Gas Line Test Hole (SUE - LOS A)*, U/G Gas Line (SUE - LOS B)*, U/G Gas Line (SUE - LOS C)*, U/G Gas Line (SUE - LOS D)*, Above Ground Gas Line.

SANITARY SEWER:

Table listing symbols for sanitary sewer: Sanitary Sewer Manhole, Sanitary Sewer Cleanout, U/G Sanitary Sewer Line, Above Ground Sanitary Sewer, SS Force Main Line Test Hole (SUE - LOS A)*, SS Force Main Line (SUE - LOS B)*, SS Force Main Line (SUE - LOS C)*, SS Force Main Line (SUE - LOS D)*.

MISCELLANEOUS:

Table listing symbols for miscellaneous: Utility Pole, Utility Pole with Base, Utility Located Object, Utility Traffic Signal Box, Utility Unknown U/G Line (SUE - LOS B)*, U/G Tank; Water, Gas, Oil, Underground Storage Tank, Approx. Loc., A/G Tank; Water, Gas, Oil, Geoenvironmental Boring, Abandoned According to Utility Records, End of Information.

CUR DATA -L-
 Plc 35+55.01
 $\Delta c = 34^{\circ}44'38.9"$ (LT)
 $D = 06^{\circ}11'14.8"$
 $Lc = 561.53$
 $Tc = 289.70$
 $R = 926$
 $SE = 4\%$
 $RO = 200'$

CUR DATA -DRIVE 1-
 Plc 11+06.18
 $\Delta c = 23^{\circ}23'46.4"$ (RT)
 $D = 28^{\circ}38'52.4"$
 $Lc = 81.67$
 $Tc = 41.41$
 $R = 200$

CUR DATA -DRIVE 1-
 Plc 11+98.64
 $\Delta c = 23^{\circ}35'16.0"$ (LT)
 $D = 22^{\circ}55'05.9"$
 $Lc = 102.92$
 $Tc = 52.20$
 $R = 250$

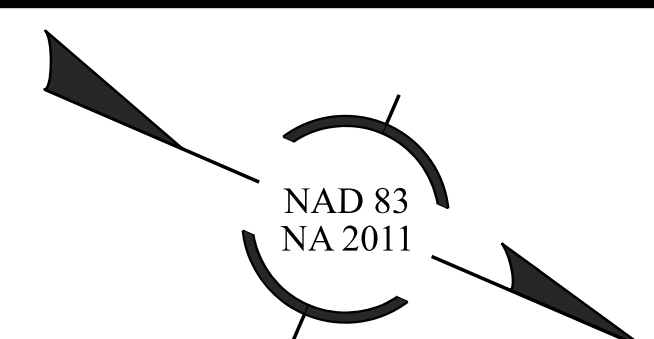
CUR DATA -L-
 Plc 41+01.14
 $\Delta c = 28^{\circ}00'15.1"$ (RT)
 $D = 05^{\circ}12'31.3"$
 $Lc = 537.64$
 $Tc = 274.30$
 $R = 1,100$
 $SE = 4\%$
 $RO = 144'$

CUR DATA -Y3-
 Plc 10+47.11
 $\Delta c = 10^{\circ}06'42.1"$ (LT)
 $D = 10^{\circ}45'38.5"$
 $Lc = 93.97$
 $Tc = 47.11$
 $R = 532.45$
 $SE = SEE PLANS$
 $RO = SEE PLANS$

CUR DATA -Y3-
 Plc 12+61.66
 $\Delta c = 03^{\circ}58'26.4"$ (LT)
 $D = 03^{\circ}08'22.2"$
 $Lc = 126.58$
 $Tc = 63.32$
 $R = 1,825$
 $SE = SEE PLANS$
 $RO = SEE PLANS$

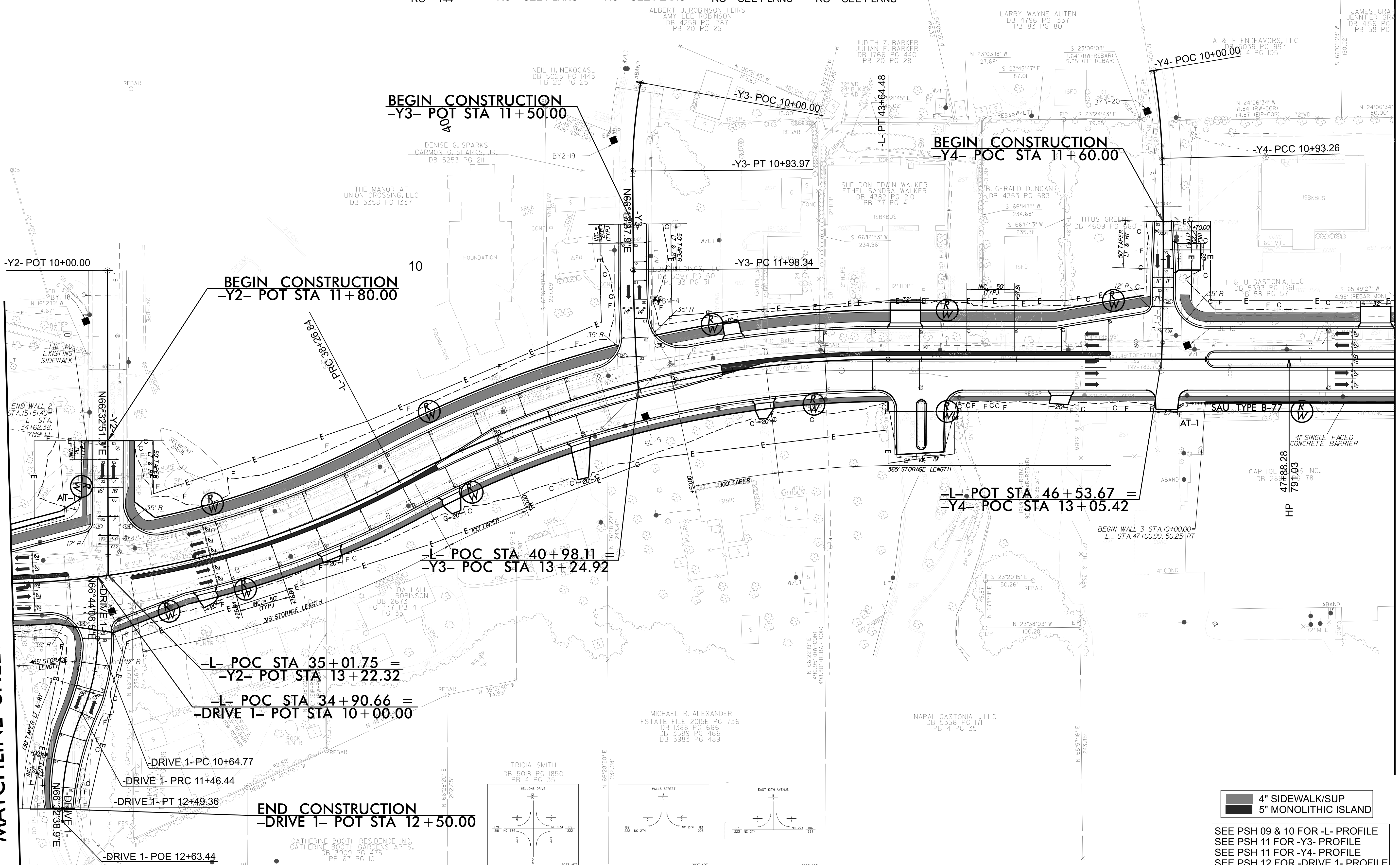
CUR DATA -Y4-
 Plc 10+46.71
 $\Delta c = 08^{\circ}02'05.8"$ (RT)
 $D = 08^{\circ}36'57.3"$
 $Lc = 93.26$
 $Tc = 46.71$
 $R = 665$
 $SE = SEE PLANS$
 $RO = SEE PLANS$

CUR DATA -Y4-
 Plc 11+99.36
 $\Delta c = 03^{\circ}03'43.1"$ (RT)
 $D = 01^{\circ}26'35.6"$
 $Lc = 212.16$
 $Tc = 106.11$
 $R = 3,970$
 $SE = SEE PLANS$
 $RO = SEE PLANS$



MATCHLINE SHEET 05 -L- STA 34+00.00

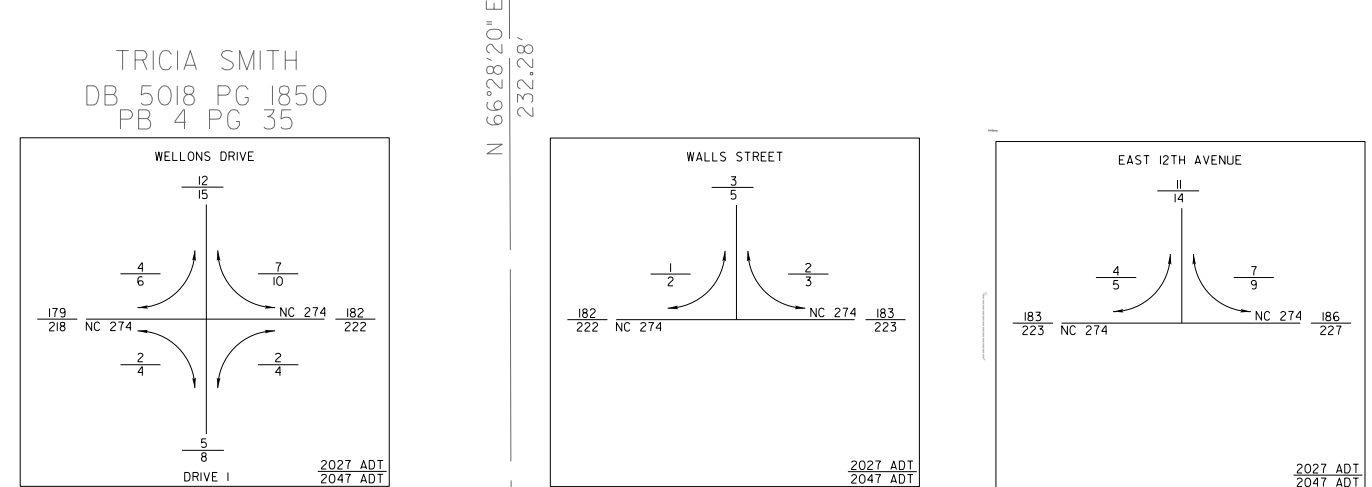
MATCHLINE SHEET 07 -L- STA 49+00.00



END CONSTRUCTION
 -DRIVE 1- POT STA 12+50.00

4" SIDEWALK/SUP
 5" MONOLITHIC ISLAND

SEE PSH 09 & 10 FOR -L- PROFILE
 SEE PSH 11 FOR -Y3- PROFILE
 SEE PSH 11 FOR -Y4- PROFILE
 SEE PSH 12 FOR -DRIVE 1- PROFILE



CATHERINE BOOTH RESIDENCE INC.
 CATHERINE BOOTH GARDENS APTS.
 DB 3909 PG 475
 DB 67 PG 10

MICHAEL R. ALEXANDER
 ESTATE FILE 2015E PG 736
 DB 1388 PG 666
 DB 3589 PG 466
 DB 3983 PG 489

NAPALI GASTONIA, LLC
 DB 5356 PG 171
 PB 4 PG 35

THE MANOR AT
 UNION CROSSING, LLC
 DB 5358 PG 1337

DENISE G. SPARKS
 CARMON G. SPARKS, JR.
 DB 5253 PG 211

ALBERT J. ROBINSON HEIRS
 AMY LEE ROBINSON
 DB 4259 PG 1787
 PB 20 PG 25

LARRY WAYNE AUTEN
 DB 4796 PG 1337
 PB 83 PG 80

JAMES GRAF
 JENNIFER GRAF
 DB 4156 PG 105
 PB 58 PG 105

A & E ENDEAVORS, LLC
 DB 5039 PG 997
 4 PG 105

B. GERALD DUNCAN
 DB 4353 PG 583

TITUS GREENE
 DB 4609 PG 160

T & U GASTONIA, LLC
 DB 5393 PG 1361
 PB 58 PG 57

CAPITOL
 DB 2818 PG 78