



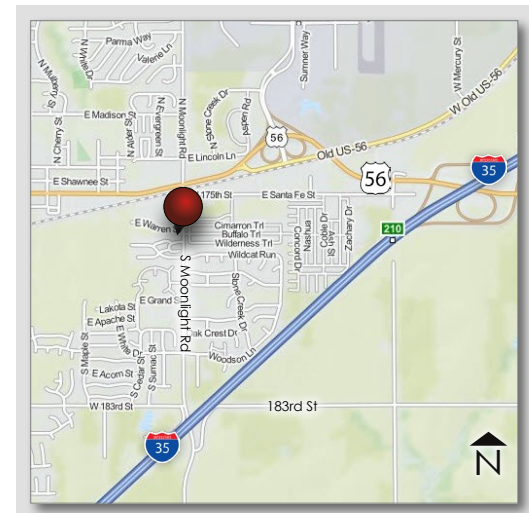
861 E. Warren Street

Gardner, Kansas

Property Features

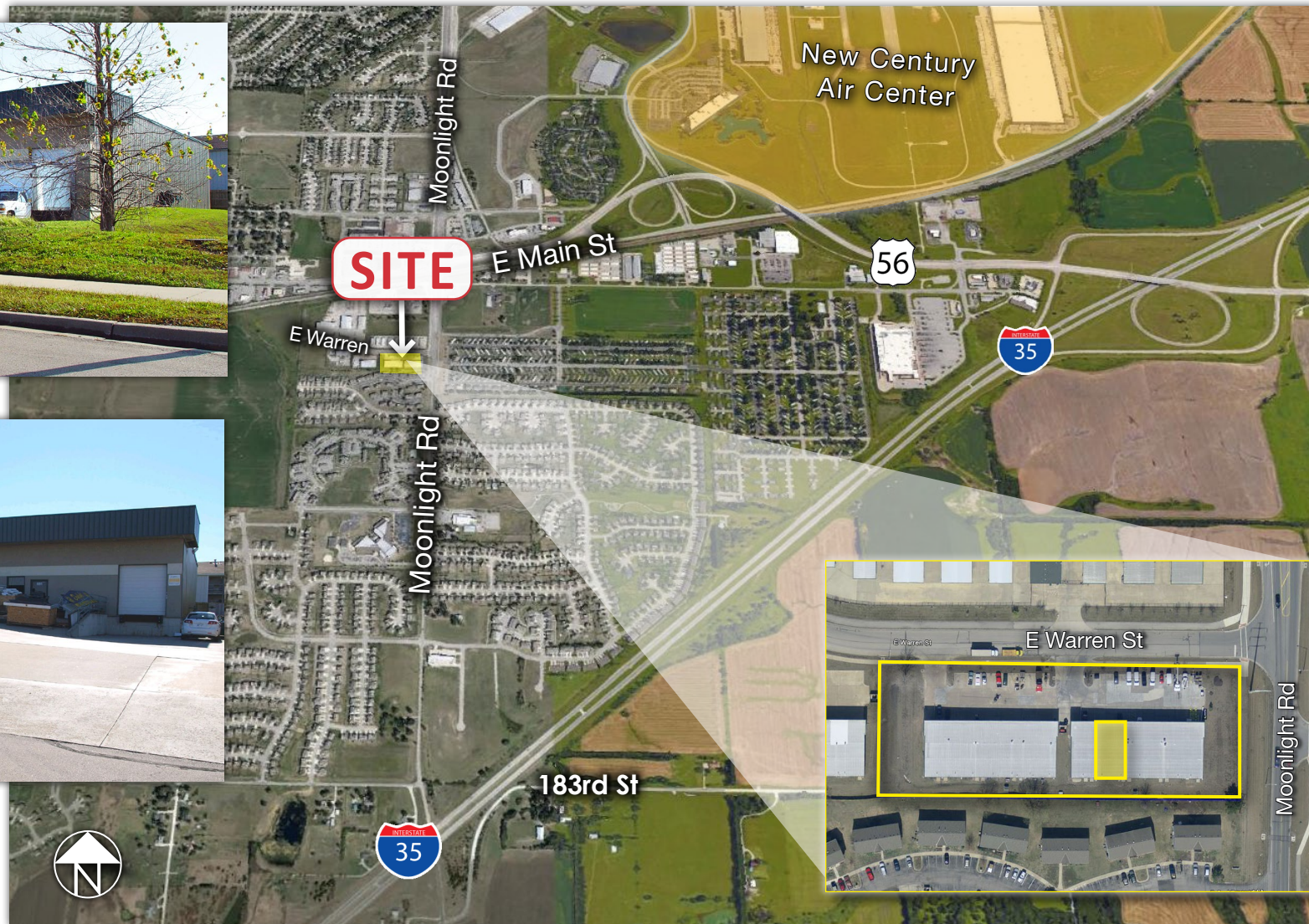
- ± 3,525 SF available
- ± 1,000 SF office space
- One drive-in loading door
- 16'-18' clear height
- One block south of Main Street & Moonlight Road
- Four minutes west of I-35

For more information:
Nathan Anderson, SIOR, CCIM
+1 913 890 2001
nathan@nai-heartland.com



Available For Lease Office/Warehouse Space

NAI Heartland



For more information:

Nathan Anderson, SIOR, CCIM
+1 913 890 2001 • nathan@nai-heartland.com

4400 College Boulevard Suite 170
Overland Park, Kansas 66211
+1 913 362 1000
nai-heartland.com

Available For Lease Office/Warehouse Space

NAI Heartland



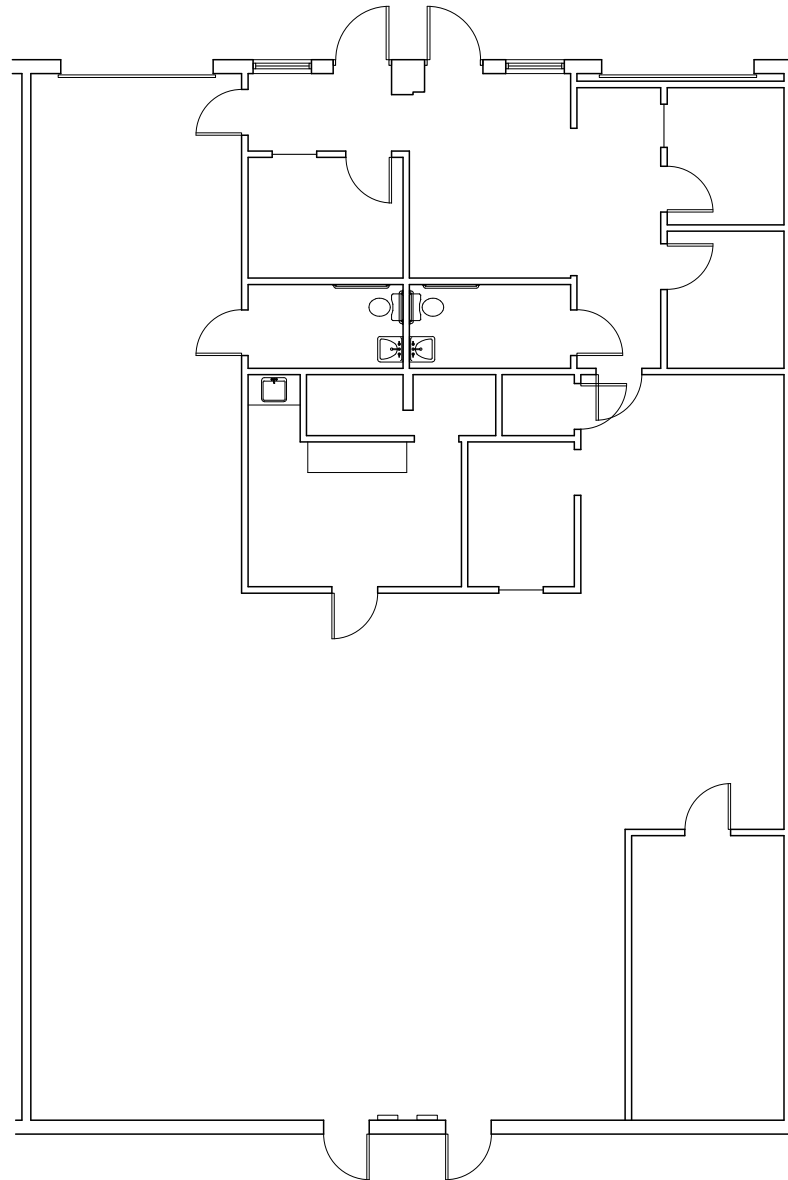
For more information:

Nathan Anderson, SIOR, CCIM
+1 913 890 2001 • nathan@nai-heartland.com

4400 College Boulevard Suite 170
Overland Park, Kansas 66211
+1 913 362 1000
nai-heartland.com

Available For Lease
Office/Warehouse Space

NAIHeartland



For more information:

Nathan Anderson, SIOR, CCIM
+1 913 890 2001 • nathan@nai-heartland.com

4400 College Boulevard Suite 170
Overland Park, Kansas 66211
+1 913 362 1000
nai-heartland.com