

PACIFIC

Real Estate Services, Inc.

COMMERCIAL INVESTMENT REAL ESTATE

859 Willamette Street, Suite 270
Eugene, OR 97401

Open Office, Retail,
or Café' space

1,870 square feet

*\$17.50 per square foot,
modified gross*



Kristin Peterson, Principal Broker
Kristin@PacificRealEstateServices.com
Licensed in the State of Oregon

O: 541-687-1434
C: 541-968-6875

FOR SUBLEASE

Downtown Retail

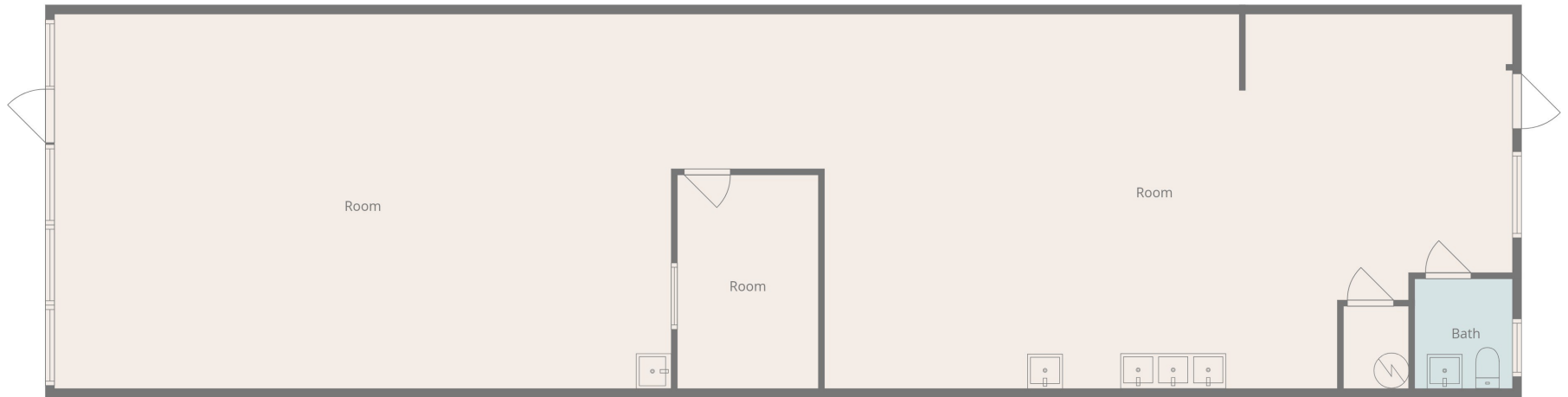


- Dedicated on-site parking. Adjacent to City parking garage.
- Close to freeway access, downtown living, and Arts district.
- One block to Lane Community College Downtown Campus.



INTERIOR PHOTOS

824 Charnelton FLOOR PLAN



Measurements Are Estimated And Not Guaranteed Accurate

