

3,392± SF Retail/Office/Warehouse

16624 Old Chesterfield Rd.
Chesterfield, MO 63017



For Sale

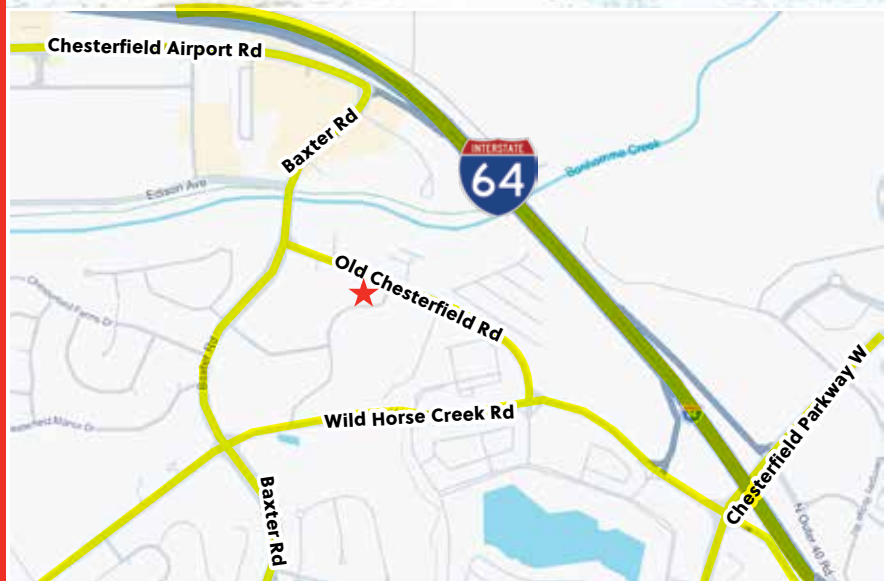
Sale Price:
\$685,000.00

Features:

- 11'W x 8'H Garage Door
- 10'6" Warehouse Ceiling Height
- New Roof 2025
- 1,427 Sqft Warehouse
- 1,965 Office Space
- Camera System Throughout
- Tenants on Month-To-Month Leases

Contact

Kevin Eskridge
keskridge@hillikercorp.com
314-781-0001



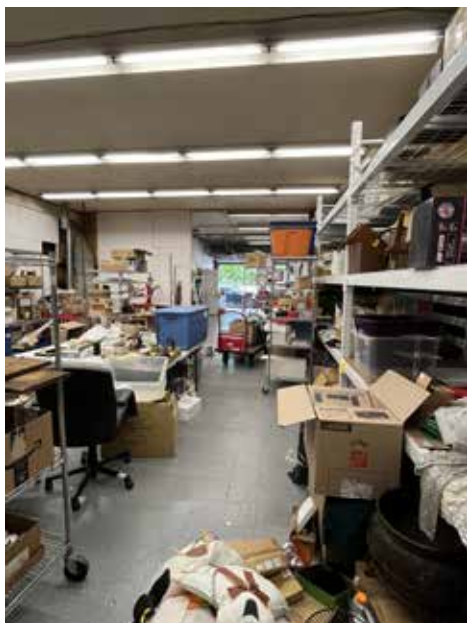
Hilliker Corporation | www.hillikercorp.com | 314-781-0001
1401 S. Brentwood Blvd. Suite 650, St. Louis, MO 63144

Information is from appropriate sources but is not guaranteed. No representation is made to environmental or other conditions of property. We recommend purchaser investigate fully.

Individual Membership in the Society of Industrial and Office Realtors. 

3,392± SF Retail/Office/Warehouse

16624 Old Chesterfield Rd.
Chesterfield, MO 63017



Contact

Kevin Eskridge
keskridge@hillikercorp.com
314-781-0001



Hilliker Corporation | www.hillikercorp.com | 314-781-0001
1401 S. Brentwood Blvd. Suite 650, St. Louis, MO 63144

Information is from appropriate sources but is not guaranteed. No representation is made to environmental or other conditions of property. We recommend purchaser investigate fully.

Individual Membership in the Society of Industrial and Office Realtors. 