

# PROVIDENCE PLAZA

1229 Providence Blvd | Deltona, FL 32725

Retail For Lease

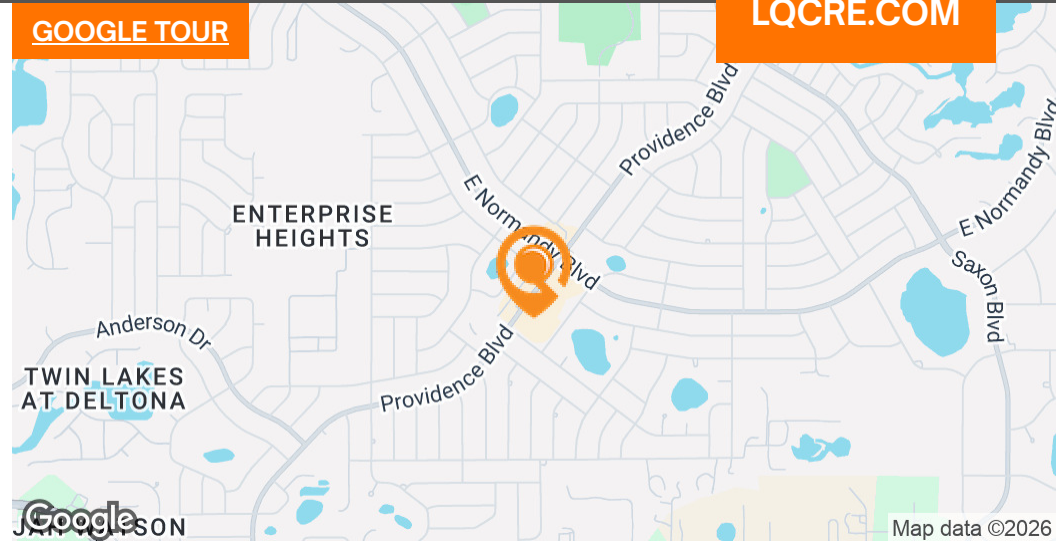


LQ Commercial  
REAL ESTATE SERVICES

LQCRE.COM



GOOGLE TOUR



\$18 SF/YR  
RATE



750 SF  
SIZE



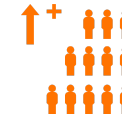
83,544 SF  
GLA

- 750 SF retail for lease in Deltona, FL
- Neighborhood Center Anchored by Key Foods
- Diversified tenant mix including grocery, medical, restaurant, and pet supply
- Located at lighted intersection of two major roadways allowing for ease of customer use in the largest city within Volusia County



5-MI TOTAL POPULATION

112361



5-MI ESTIMATED HH

42,474



5-MI AVG HH INCOME

\$93,140



5-MI # EMPLOYEES

25,247

[PROPERTIES.LQCRE.COM/PROVIDENCE-PLAZA](https://PROPERTIES.LQCRE.COM/PROVIDENCE-PLAZA)



Maitland, FL 32751  
500 Winderley Pl #104  
LQCRE.COM

Julia Sosa  
Founding Principal - Orlando  
D: 407.775.4358  
C: 407.257.8246  
jsosa@lqcre.com

Eva Royal  
Principal, Senior Associate  
D: 407.705.2217  
C: 407.421.3532  
eroyal@lqcre.com

# PROVIDENCE PLAZA

1229 Providence Blvd | Deltona, FL 32725  
Retail For Lease



LQ Commercial  
REAL ESTATE SERVICES

LQCRE.COM

## SITE PLAN



750 SF



labcorp

Pet Supermarket

DUNKIN'



E NORMANDY BLVD

PROVIDENCE BLVD



Maitland, FL 32751  
500 Winderley Pl #104  
LQCRE.COM

Julia Sosa  
Founding Principal - Orlando  
D: 407.775.4358  
C: 407.257.8246  
jsosa@lqcre.com

Eva Royal  
Principal, Senior Associate  
D: 407.705.2217  
C: 407.421.3532  
eroyal@lqcre.com

Information obtained from owner(s) or other sources deemed reliable. We have no reason to doubt its accuracy, but cannot guarantee it. All properties subject to change or withdrawal without notice.

# PROVIDENCE PLAZA

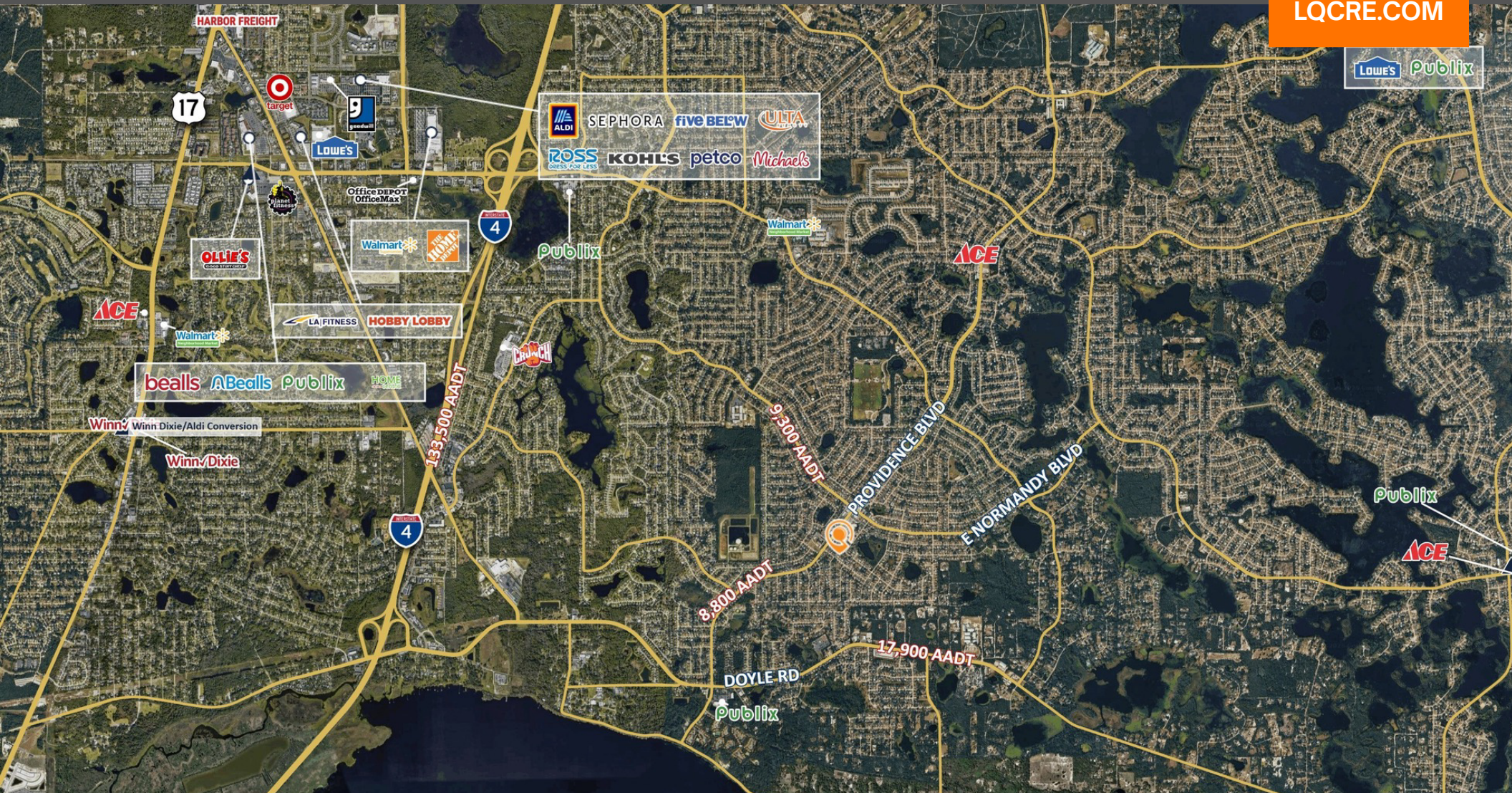
1229 Providence Blvd | Deltona, FL 32725

Retail For Lease



LQ Commercial  
REAL ESTATE SERVICES

LQCRE.COM



LQ Commercial  
REAL ESTATE SERVICES

Maitland, FL 32751

500 Winderley Pl #104

LQCRE.COM

Julia Sosa

Founding Principal - Orlando

D: 407.775.4358

C: 407.257.8246

jsosa@lqcre.com

Eva Royal

Principal, Senior Associate

D: 407.705.2217

C: 407.421.3532

eroyal@lqcre.com

Information obtained from owner(s) or other sources deemed reliable. We have no reason to doubt its accuracy, but cannot guarantee it. All properties subject to change or withdrawal without notice.

# PROVIDENCE PLAZA

1229 Providence Blvd | Deltona, FL 32725

Retail For Lease



LQ Commercial  
REAL ESTATE SERVICES

LQCRE.COM



LQ Commercial  
REAL ESTATE SERVICES

Maitland, FL 32751

500 Winderley Pl #104

LQCRE.COM

**Julia Sosa**

Founding Principal - Orlando

D: 407.775.4358

C: 407.257.8246

jsosa@lqcre.com

**Eva Royal**

Principal, Senior Associate

D: 407.705.2217

C: 407.421.3532

eroyal@lqcre.com

Information obtained from owner(s) or other sources deemed reliable. We have no reason to doubt its accuracy, but cannot guarantee it. All properties subject to change or withdrawal without notice.