

FOR SALE OR LEASE

**NEW PRICE
REDUCTION!**

NOW \$599,000



Unit LL01

Suite Size: ±3,693 SF (Usable)

Offering Price: ~~\$699,000~~

Reduced Offering Price: \$599,000

Lease Rate: \$1.50 PSF / Month, NNN

Parcel #: CJ3180000220

- \$50 PSF Landlord TI contribution towards a new lease
- Currently in "shell" condition
- One of two Suites with direct exterior access
- Purchase includes a pro rata share of common area and its amenities

Chinook Medical Building

980 W. Ironwood Drive
Coeur d'Alene, ID 83814

**KIEMLE
HAGOOD**

PAT EBERLIN

208.215.1375

pat.eberlin@kiemlehagood.com

MARY KIENBAUM

208.770.2589

mary.kienbaum@kiemlehagood.com

The Chinook Medical Building offers premier Class A medical office space located in the heart of the highly sought-after Ironwood Drive medical corridor. This four-level professional office building is thoughtfully designed to meet the needs of healthcare providers and professional tenants alike. Key amenities include a spacious public parking lot, and a covered drive-thru entry for patient convenience. The building also features dedicated backup emergency power and a direct fiber optic connection to Kootenai Health (KMC), ensuring seamless connectivity and operational reliability. With its prime location and exceptional infrastructure, the Chinook Medical Building is an ideal choice for medical and healthcare professionals seeking a modern, high-performance office environment.

Property Highlights

Architectural Design

- Designed by renowned G.D. Longwell Architects
- Distinctive, professional presence in a premier office setting

Parking & Accessibility

- 24 secure underground parking stalls
- Ample public parking – exceeds city requirements
- Covered drive-thru entry for convenient tenant and client access

Connectivity & Infrastructure

- Direct fiber optic connection to Kootenai Health (KMC)
- Dedicated emergency backup power system to ensure uninterrupted operations

Building Overview

- Four-level Class A professional office building
- Built for functionality, efficiency, and long-term tenant satisfaction



Lower Level

LL01 | ±3,693 SF

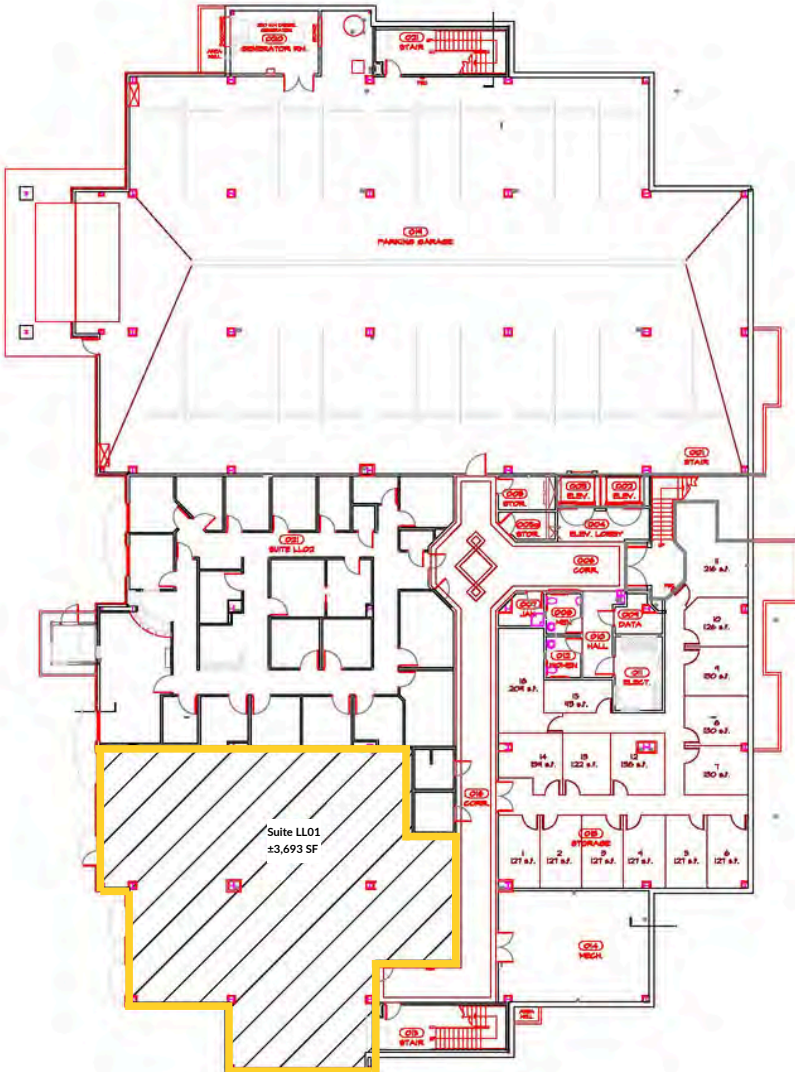
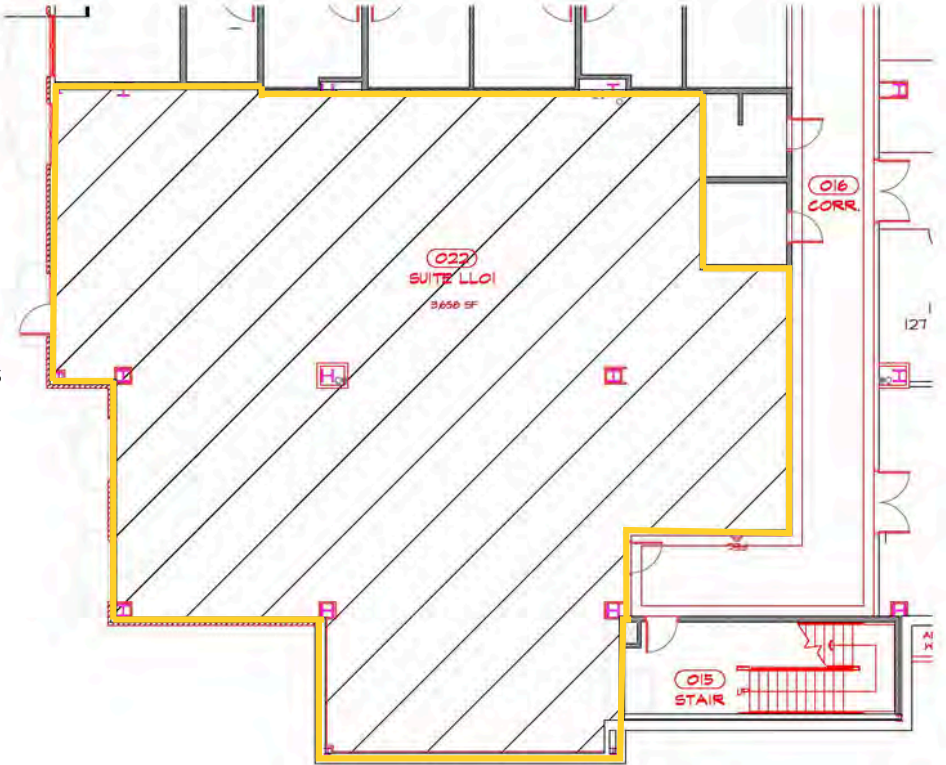
Offering Price: \$699,000

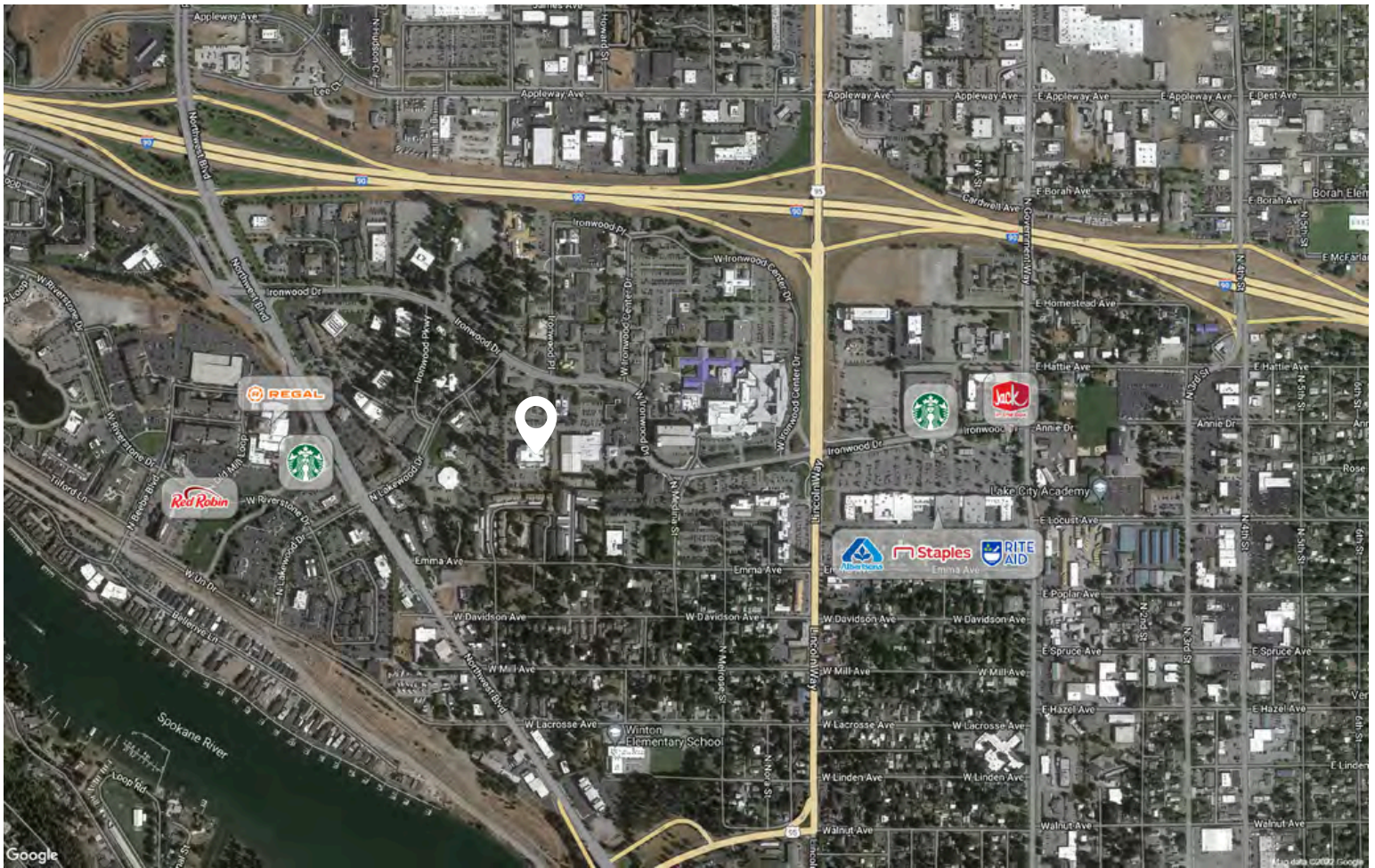
Reduced Offering Price: \$599,000

Lease Rate: \$1.50 PSF / Month, NNN

Parcel: CJ318000220

- \$50 PSF Landlord TI contribution towards a new lease
- Currently in "shell" condition
- One of two suites with direct exterior access
- Purchase includes a pro-rata share of common area and amenities





CHINOOK MEDICAL BUILDING

[VIEW LOCATION](#)

908 W Ironwood Drive, Coeur d'Alene, ID 83814

PAT EBERLIN

208.215.1375 | pat.eberlin@kiemleahagood.com

MARY KIENBAUM

208.770.2589 | mary.kienbaum@kiemleahagood.com



No warranty or representation, expressed or implied, is made by Kiemle Hagood, its agents or its employees as to the accuracy of the information contained herein. All information furnished is from sources deemed reliable and submitted subject to errors, omissions, change of terms and conditions, prior sale, lease or financing, or withdrawal without notice. No one should rely solely on the above information, but instead should conduct their own investigation to independently satisfy themselves. Kiemle Hagood respects the intellectual property of others: if you believe the copyright in your work has been violated through this Website, please contact our office for notice of claims of copyright infringement. For your complaint to be valid under the Digital Millennium Copyright Act of 1998 (DMCA), you must provide the following information when providing notice of the claimed copyright infringement: identify the material on the Website that you believe infringes your work, with enough detail so that we may locate it on the Website; provide your address, telephone number and email address; provide a statement that you have a good faith belief that the disputed use is not authorized by the copyright owner, its agent, or the law; provide a statement that the information in the notification is accurate, and under penalty of perjury, that the complaining party is authorized to act on behalf of the owner of an exclusive right that is allegedly infringed; and provide your physical or electronic signature. Upon receiving your complaint, Kiemle Hagood will, upon review, remove content that you believe infringes your copyright if the complaint is found to be valid.

OFFICE LOCATIONS

SPOKANE | COEUR D'ALENE | TRI-CITIES | MISSOULA

1579 W RIVERSTONE DRIVE, SUITE 102
COEUR D'ALENE, ID 83814