

# FOR LEASE

## UP TO ± 12 ACRES INDUSTRIAL OUTSIDE STORAGE

121 SAMPSON CREEK ROAD, CHESAPEAKE, VA 23322

AVAILABLE AUGUST 2026



- Centrally Located within close proximity to Dominion Blvd and Hampton Roads Beltway
- Approximately 12 Useable Acres Outside Storage Available
- 4 buildings: 3,600 sf office; 6,800 sf mechanics building; 1,250 sf shop; 1,500 sf office
- M3 - WATERFRONT INDUSTRIAL ZONING
- ALL UTILITIES ON SITE INCLUDING, ELECTRIC, GAS, WATER/SEWER INCLUDING VERIZON/COX FIBER.
- 1,000' BULKHEAD CONSTRUCTED 2012 WITH STABILIZED WORK AREA
- PERMITTED USES: CONTAINER/TRAILER STORAGE AND MAINTENANCE, TRUCKING, AND CONTRACTOR STORAGE YARD.
- 9'-9.5 MLW DRAFT AT BULKHEAD

### FOR INFORMATION, PLEASE CONTACT:

**JOHN MERENDA**

JMS Commercial  
johnmerenda1@yahoo.com  
(757) 560-5476



# SITE PLAN/SURVEY

Site Map

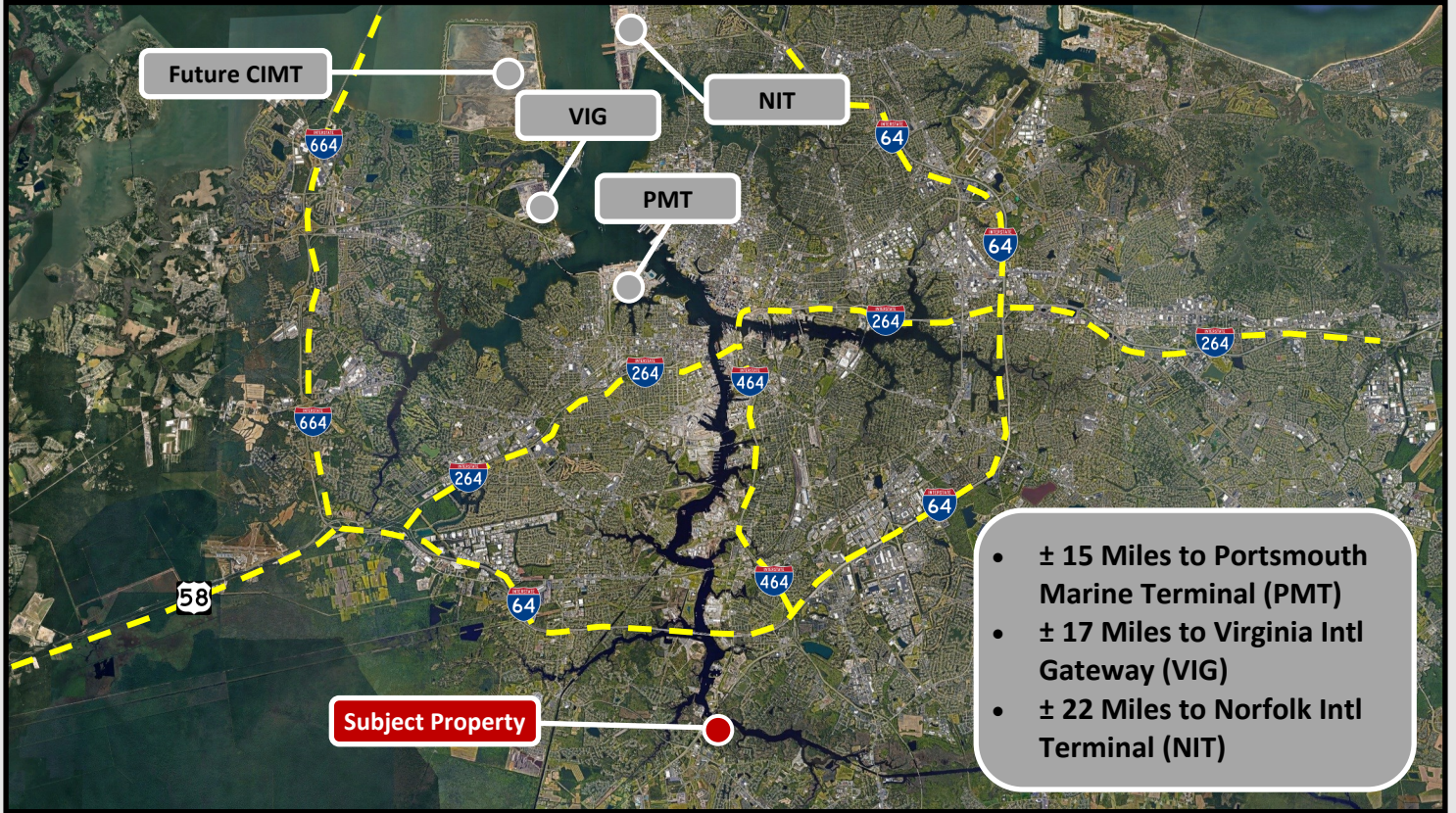


**FOR INFORMATION, PLEASE CONTACT:**

**JOHN MERENDA**  
JMS Commercial  
johnmerenda1@yahoo.com  
(757) 560-5476



# AERIALS



**FOR INFORMATION, PLEASE CONTACT:**

**JOHN MERENDA**  
 JMS Commercial  
 johnmerenda1@yahoo.com  
 (757) 560-5476





**FOR INFORMATION, PLEASE CONTACT:**

**JOHN MERENDA**

JMS Commercial  
johnmerenda1@yahoo.com  
(757) 560-5476

