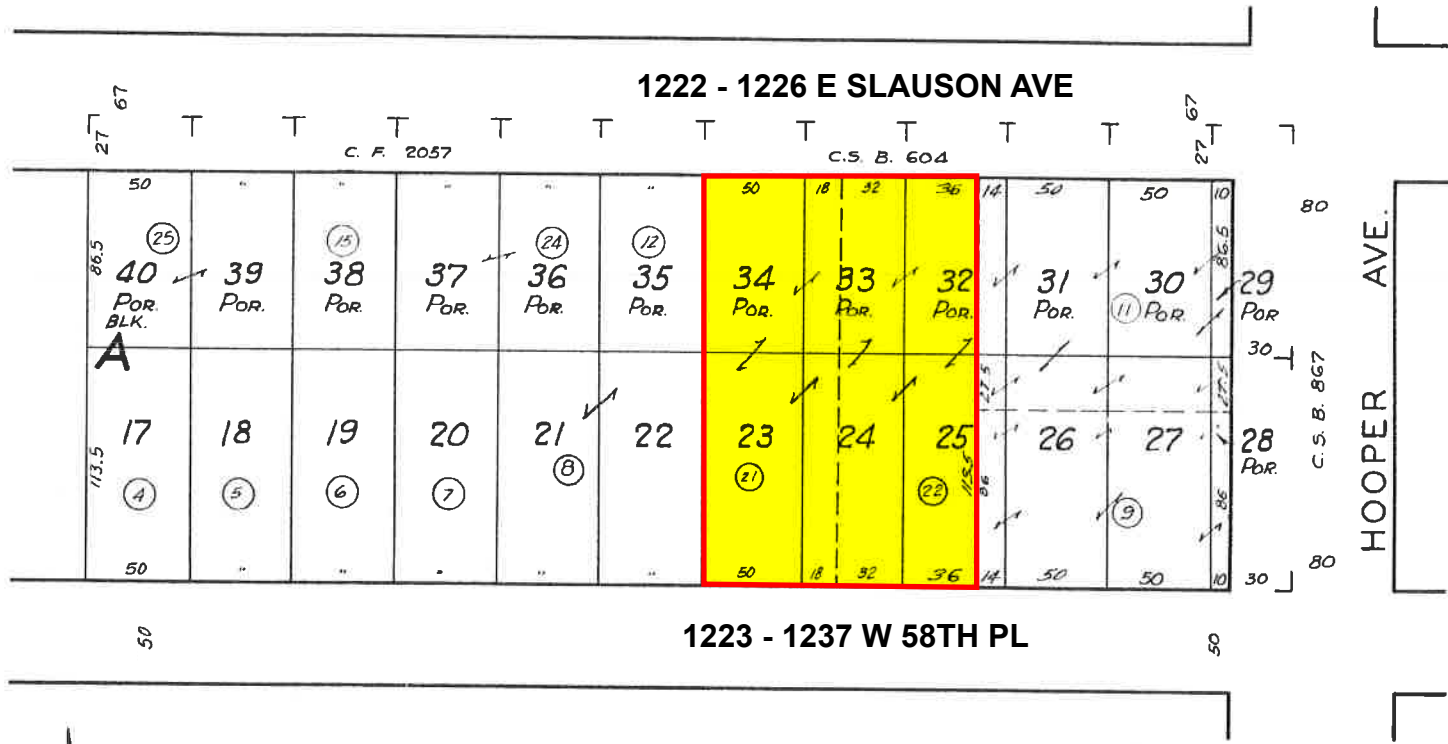


1-18-65  
8-19-65  
REVISED  
11-27-56  
3-2-57  
12-5-60  
1-8-62  
720216  
#10317303



SCHERER AND GILBREATH'S  
WHITMORE PARK  
M. B. 15 - 61

CODE  
1166

FOR PREV. ASSM'T. SEE  
6008-2