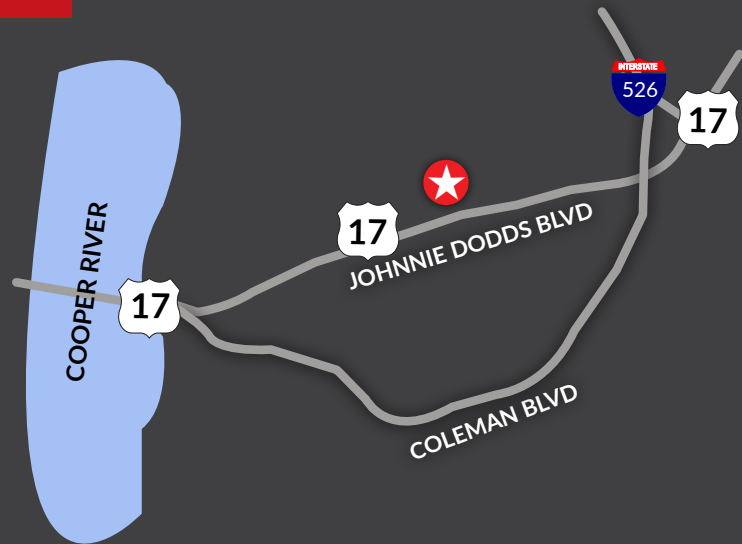


# OFFICE SPACE FOR SALE OR LEASE

710 Johnnie Dodds Blvd., Suite 100  
Mt. Pleasant SC 29464

- Class A building located in a quiet setting with excellent access to the Ravenel Bridge and I-526
- 3,639 SF office suite with open work spaces as well as private offices and a training room
- The suite has a glass door entry immediately off main lobby on the first floor
- Includes a private patio, full-size break area, and copy area
- Common area features include slate floors and floor-to ceiling windows

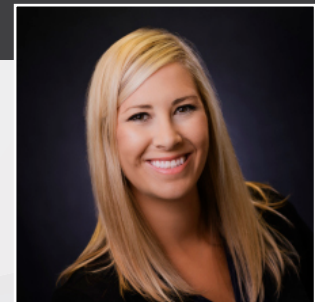


**Jon Chalfie**  
Vice President of Brokerage  
843.345.6000

\*\*Click Here for S.C. Agency Relationships Disclosure



**LANDMARK**  
ENTERPRISES  
COMMERCIAL REAL ESTATE



**Hailey Clifton**  
Associate  
843.300.5209

[www.landmark-enterprises.com](http://www.landmark-enterprises.com)

\*We obtained the information above from sources we believe to be reliable. However, we have not verified its accuracy and make no guarantee, warranty or representation about it. It is submitted subject to the possibility of errors, omissions, change of price, rental or other conditions, prior sale, lease or financing, or withdrawal without notice. We include projections, opinions, assumptions or estimates for example only, and they may not represent current or future performance of the property. You and your tax and legal advisors should conduct your own investigation of the property and transaction.

# OFFICE SPACE FOR SALE OR LEASE

## OFFERING SUMMARY

PROPERTY  
ADDRESS: 710 Johnnie Dodds Blvd.,  
Suite 100  
Mt. Pleasant SC 29464

TMS: 514-00-00-425

Sale Price: \$1,450,000

Lease Price: \$28/SF NNN

Size: 3,639 SF



710 JOHNNIE DODDS BLVD. | SUITE 100 | MT. PLEASANT SC 29464

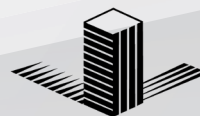


**LANDMARK**  
ENTERPRISES  
COMMERCIAL REAL ESTATE

# OFFICE SPACE FOR SALE OR LEASE



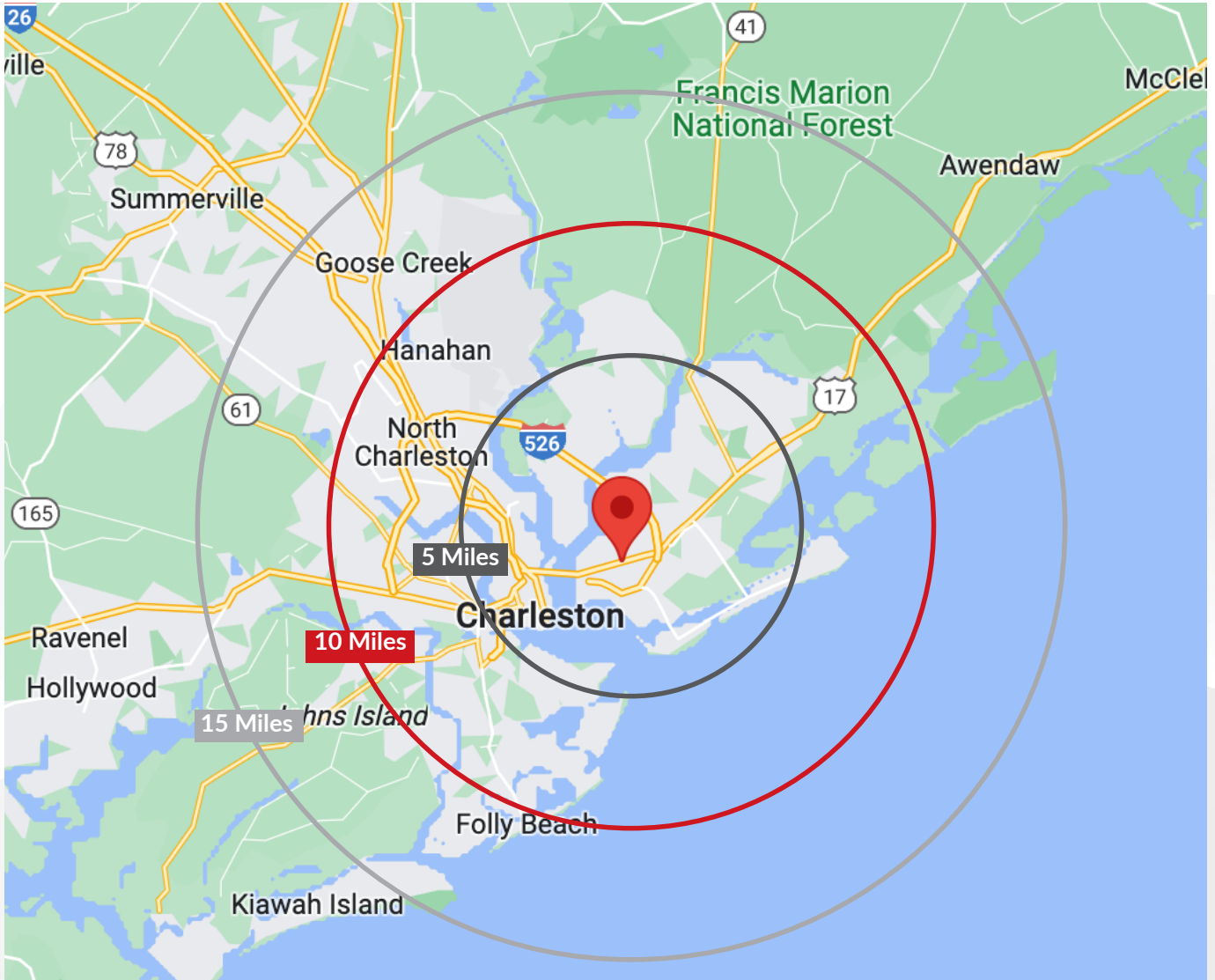
710 JOHNNIE DODDS BLVD. | SUITE 100 | MT. PLEASANT SC 29464



**LANDMARK**  
ENTERPRISES  
COMMERCIAL REAL ESTATE

# OFFICE SPACE FOR SALE OR LEASE

## DISTANCE MAP



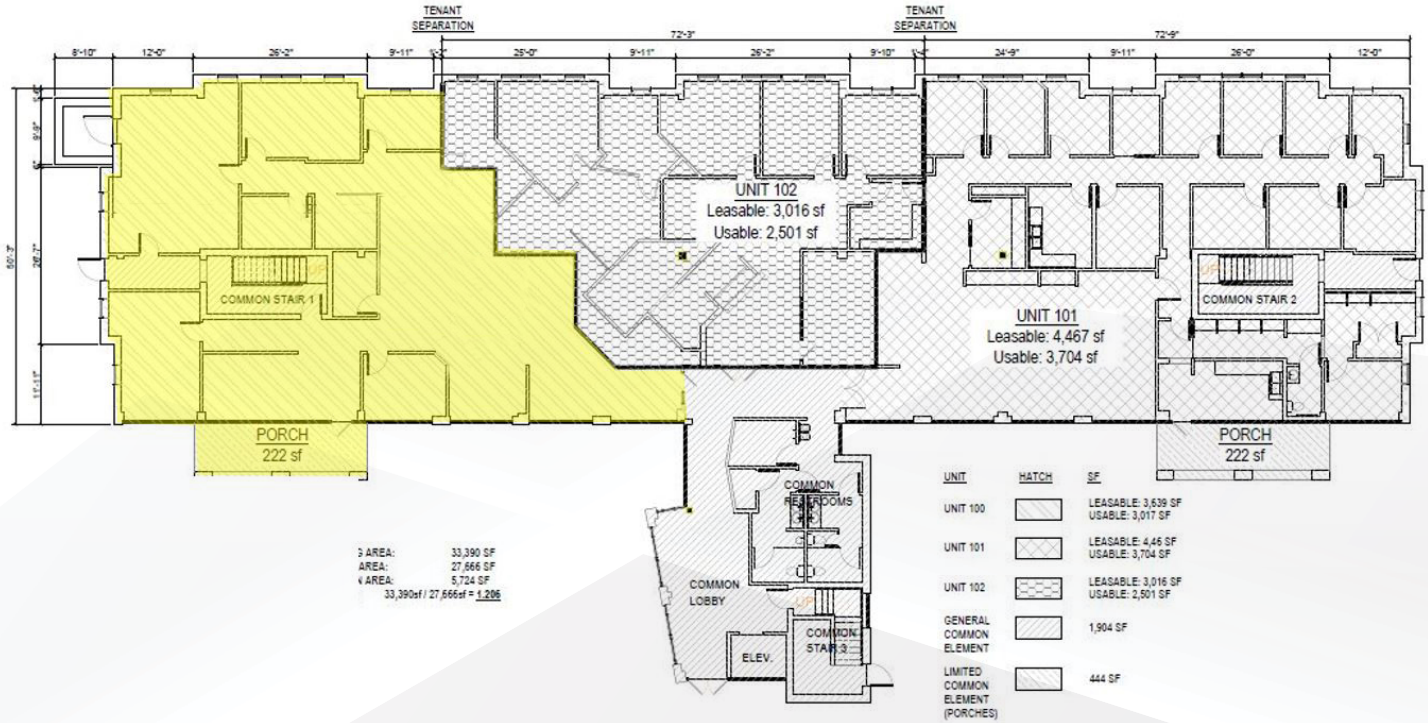
710 JOHNNIE DODDS BLVD. | SUITE 100 | MT. PLEASANT SC 29464



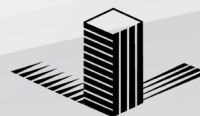
**LANDMARK**  
ENTERPRISES  
COMMERCIAL REAL ESTATE

# OFFICE SPACE FOR SALE OR LEASE

## FLOOR PLAN



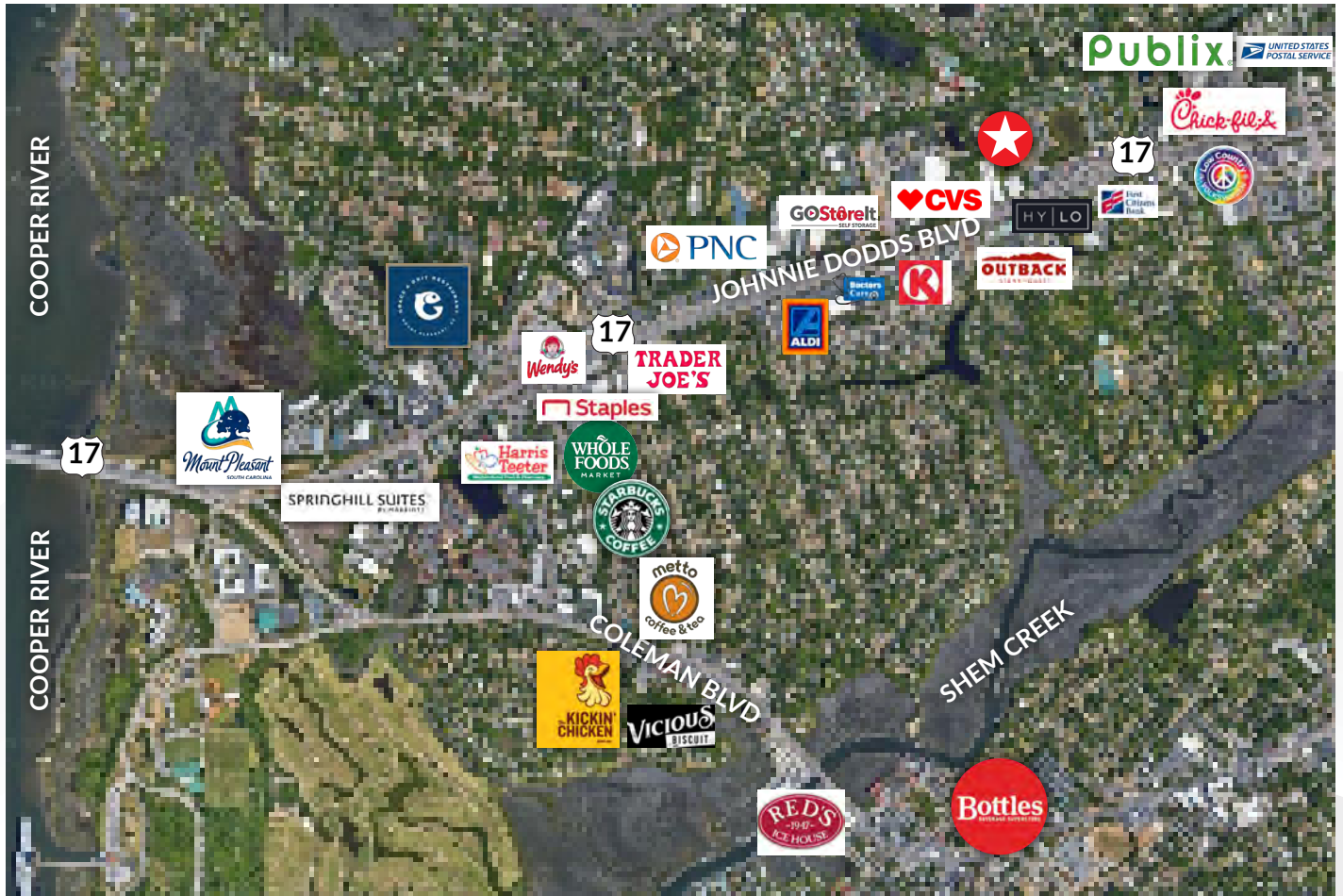
710 JOHNNIE DODDS BLVD. | SUITE 100 | MT. PLEASANT SC 29464



**LANDMARK**  
 ENTERPRISES  
 COMMERCIAL REAL ESTATE

# OFFICE SPACE FOR SALE OR LEASE

## AERIAL MAP



710 JOHNNIE DODDS BLVD. | SUITE 100 | MT. PLEASANT SC 29464



**LANDMARK**  
ENTERPRISES  
COMMERCIAL REAL ESTATE