

14215

MEAD ST., UNIT A

LONGMONT, COLORADO 80504

BUILDING 2



AVAILABLE FOR LEASE

4,000 SF INDUSTRIAL SPACE WITH FENCED YARD

LEASE RATE: \$12.00/SF NNN | NNN (EST.): \$6.95/SF

AVAILABLE APRIL 1, 2026



**CUSHMAN &
WAKEFIELD**

14215 MEAD ST., UNIT A, LONGMONT, COLORADO 80504
BUILDING 2

AVAILABLE FOR LEASE

4,000 SF

LEASE RATE: \$12.00/SF NNN

NNN (EST.): \$6.95/SF



PROPERTY FEATURES

Available Size:	4,000 SF
Building Size:	12,000 SF
Year Built:	1998
Clear Height:	15.5' - 21.5'
Loading:	One (1) 12' x 14' overhead door
Zoning:	LI - Light Industrial



Click Link Here

PROPERTY HIGHLIGHTS

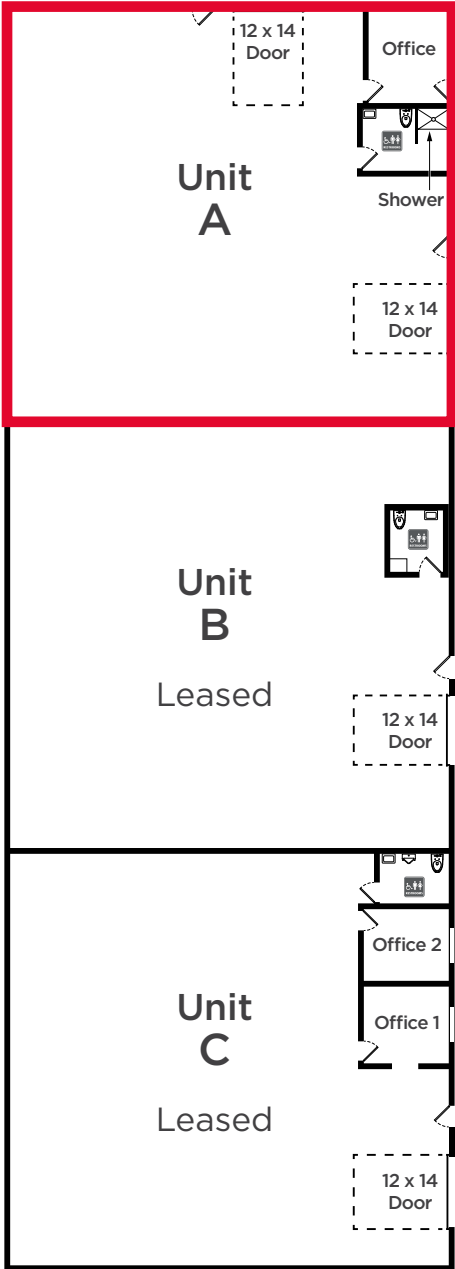
- 1 office, 1 bathroom
- Fenced yard space available
- Excellent street presence and visibility on Mead Street
- One large drive-in door
- Clear span, sprinklers and radiant heat
- One turn access from I-25/Hwy. 55
- Professionally managed building
- NNN's do not include electric

*No automotive uses

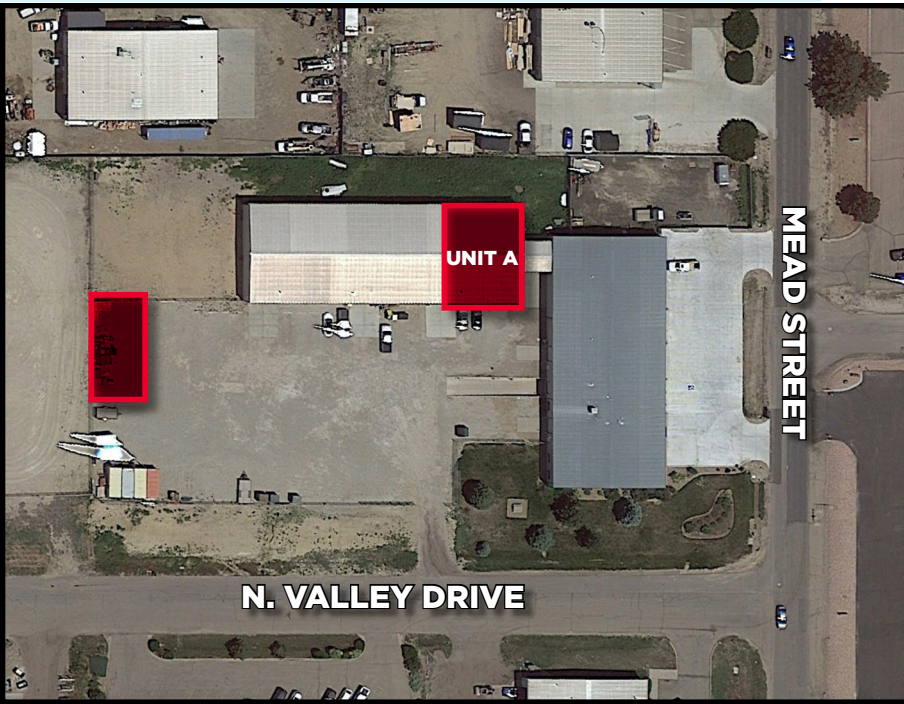
14215 MEAD ST., UNIT A, LONGMONT, COLORADO 80504

BUILDING 2

AVAILABLE FOR LEASE



14215 MEAD ST., UNIT A
 LONGMONT, COLORADO 80504
 BUILDING 2



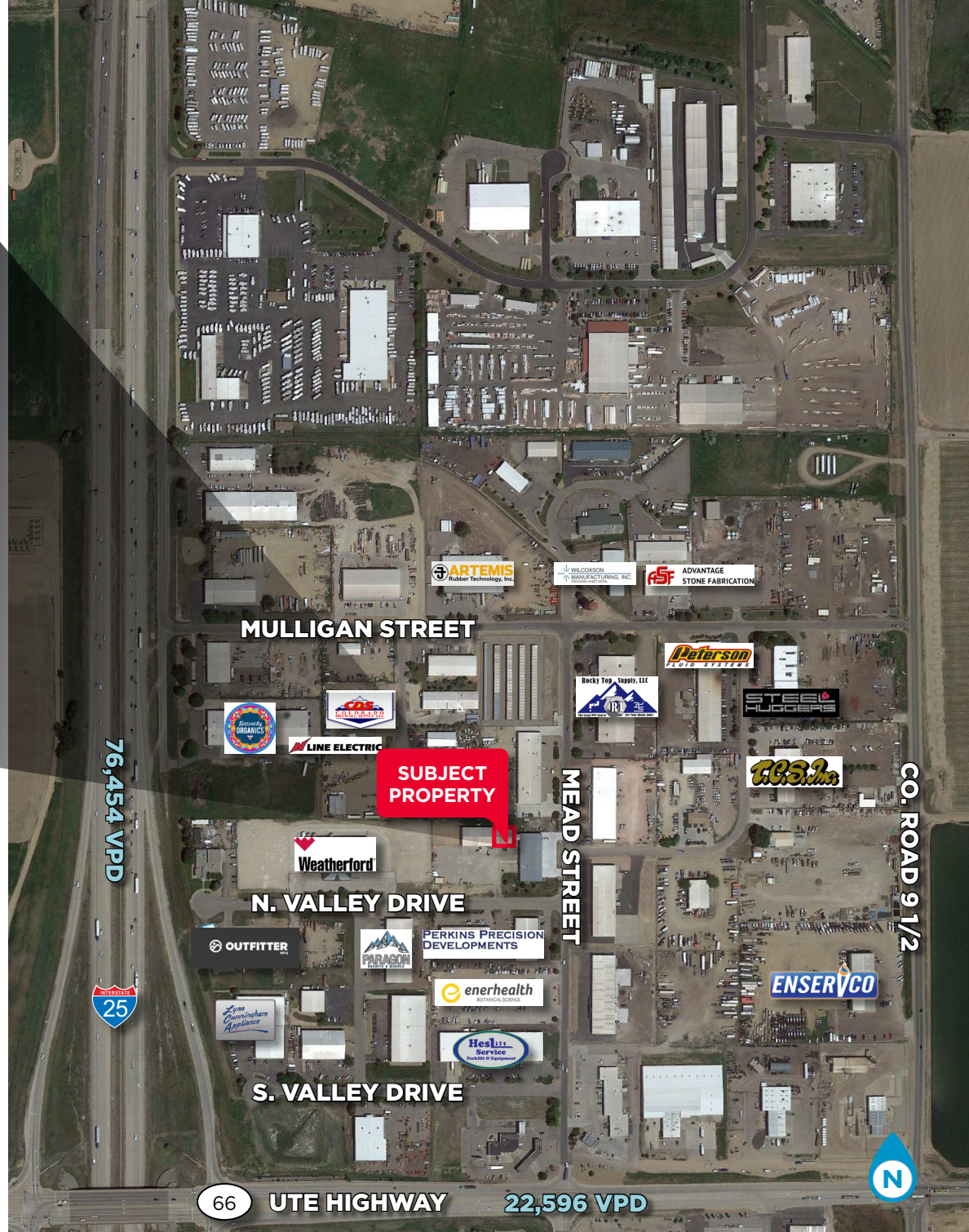
CONTACT INFORMATION

TY MASHEK
 Senior Associate
 +1 303 525 3125
 ty.mashek@cushwake.com

TRAVIS ACKERMAN
 Executive Managing Director
 +1 970 267 7720
 travis.ackerman@cushwake.com

772 Whalers Way, Suite 200
 Fort Collins, Colorado 80525

T +1 970 776 3900
 F +1 970 267 7419
 cushmanwakefield.com



©2026 Cushman & Wakefield. All rights reserved. The information contained in this communication is strictly confidential. This information has been obtained from sources believed to be reliable but has not been verified. NO WARRANTY OR REPRESENTATION, EXPRESS OR IMPLIED, IS MADE AS TO THE CONDITION OF THE PROPERTY (OR PROPERTIES) REFERENCED HEREIN OR AS TO THE ACCURACY OR COMPLETENESS OF THE INFORMATION CONTAINED HEREIN, AND SAME IS SUBMITTED SUBJECT TO ERRORS, OMISSIONS, CHANGE OF PRICE, RENTAL OR OTHER CONDITIONS, WITHDRAWAL WITHOUT NOTICE, AND TO ANY SPECIAL LISTING CONDITIONS IMPOSED BY THE PROPERTY OWNER(S). ANY PROJECTIONS, OPINIONS OR ESTIMATES ARE SUBJECT TO UNCERTAINTY AND DO NOT SIGNIFY CURRENT OR FUTURE PROPERTY PERFORMANCE. PD-157519-V7