

COLUMBIA BANK PLAZA

PREMIER CORNER OFFICE

WITH BUILDING SIGNAGE OPPORTUNITY

HIGH-VISIBILITY CORNER LOCATION AT FRED WARING DRIVE & WASHINGTON STREET IN PALM DESERT



±2,108 SF

\$1.40

PSF/MO

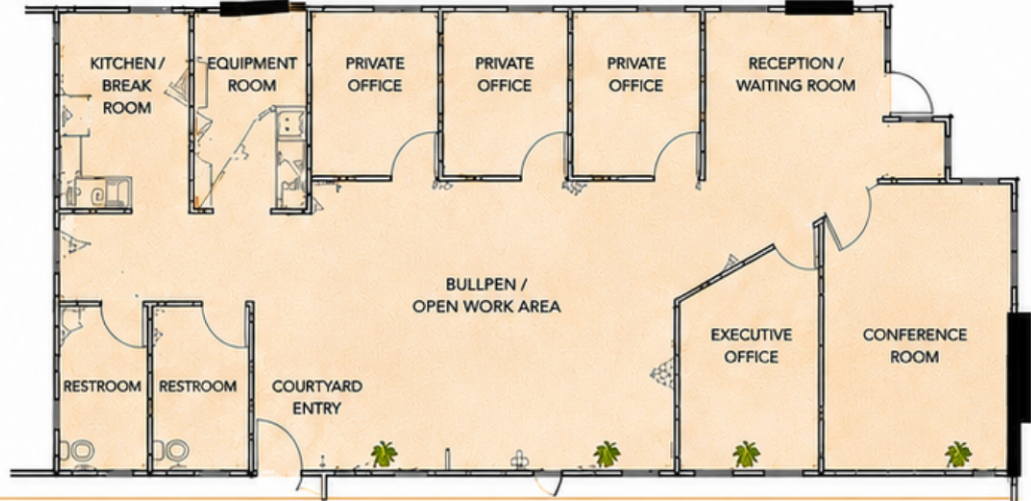
+ \$0.58 NNN



RECEPTION AREA



FLOOR PLAN | ±2,108 SF



SUITE FEATURES

- Prime corner location
- Building signage opportunity
- Reception & waiting area
- Executive office
- Conference room
- Three private offices
- Open bullpen / work area
- Kitchen & break room
- Two private restrooms

PRIME LOCATION



PRESTIGIOUS CORNER LOCATION

Located at the northwest corner of Fred Waring Drive and Washington Street in Palm Desert.

Directly across from the world-renowned Indian Wells Tennis Garden and close to premier shopping, dining and resorts.

High traffic counts and exceptional visibility make this an ideal location for your business.

COLDWELL BANKER COMMERCIAL
LYLE & ASSOCIATES

STEVE LYLE
760.578.9927
CalDRE #00762911
stevelyle@cblyle.net

MICHAEL LYLE
760.774.6533
CalDRE #02002995
mlyle@cblyle.net

ARLEY RYAN
630.660.9376
CalDRE #02198855
arleyan@cblyle.net

78000 Fred Waring Drive, Palm Desert, CA 92211

760.772.6400

www.cblyle.com