

**2** MANCHESTER  
ROAD

**CHARMING CHARACTER OFFICES TO LET IN THE HEART OF WILMSLOW**



## 2 MANCHESTER ROAD

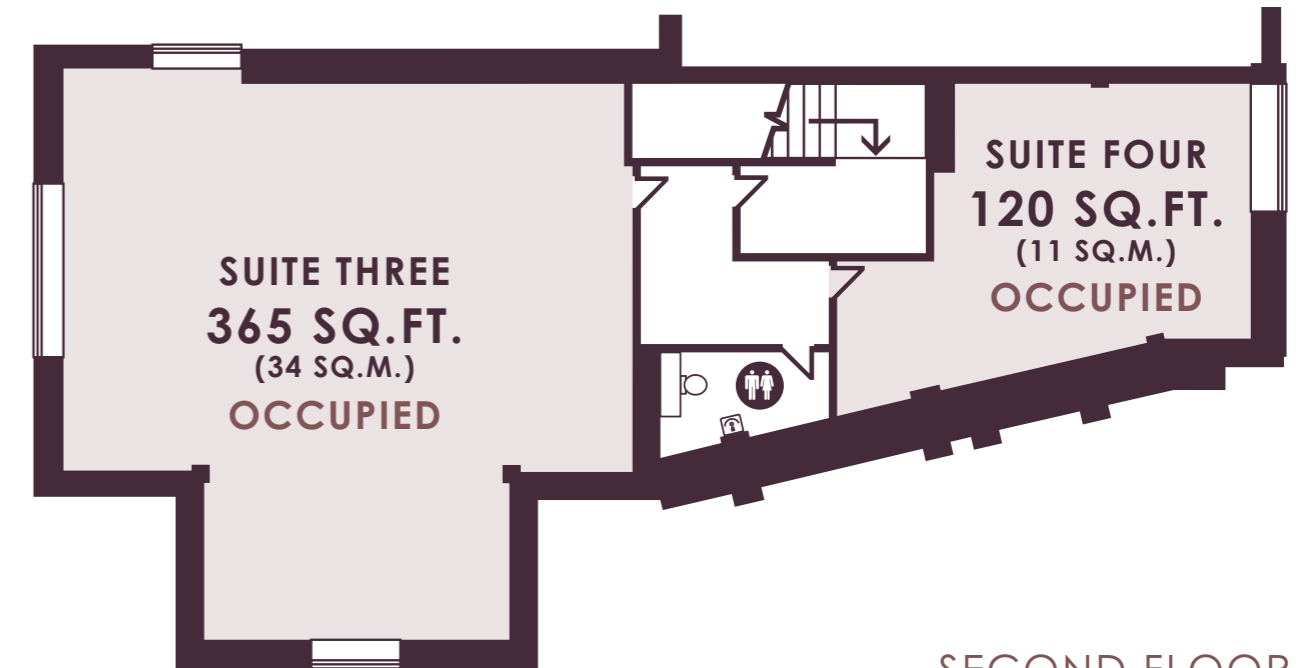
Wilmslow, the vibrant Cheshire town is renowned for its wealth of stylish shops, cafés, trendy bars and quality restaurants.

Local independent eateries include Unico Lounge, Nourish, Juniper, Smoke and Suburban Green. Shoppers have a fantastic choice of retailers along Grove Street, which is located just 100 yards from the building. Convenience stores include Tesco Express, M&S Food, Waitrose, and Sainsbury's.

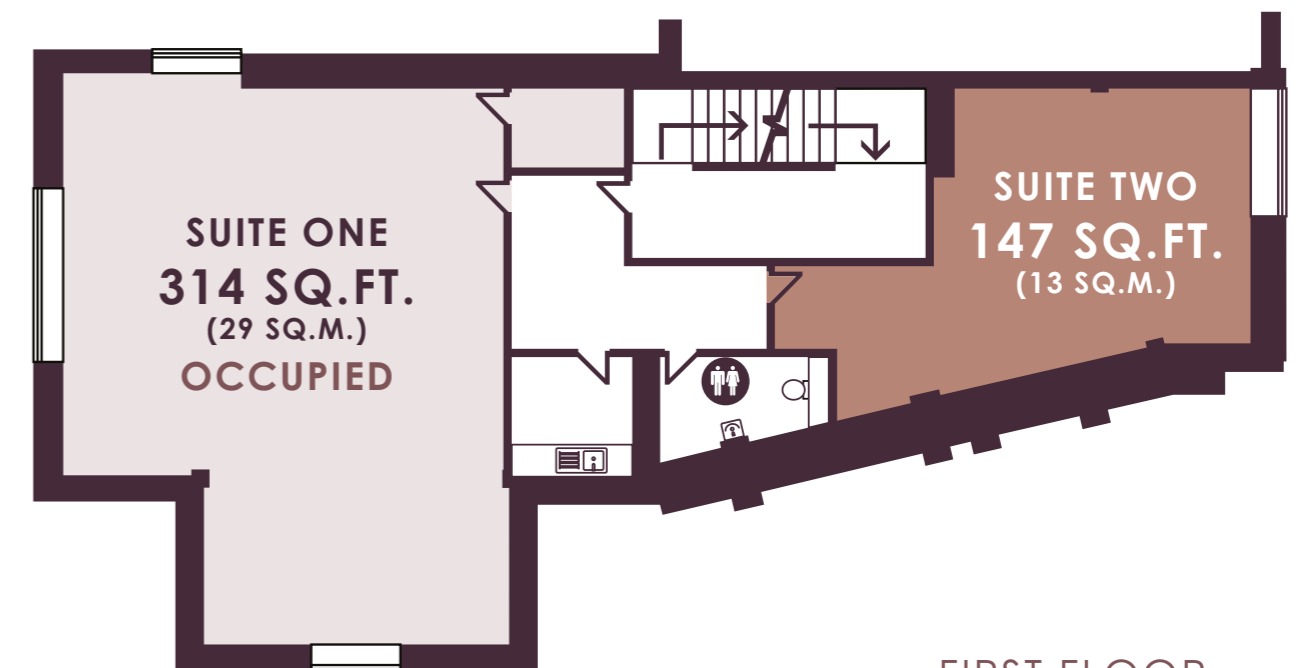
2 Manchester road is only a two minute walk from Wilmslow train station, where regular and direct services run to Stockport, Manchester Piccadilly and London Euston. The M56, M60 and Manchester Airport are only a 10 minute drive away, providing ease of access to surrounding areas.

## AVAILABILITY

FLOOR	OFFICE	SQ.FT.	PEOPLE
1	SUITE TWO	147	1-2



SECOND FLOOR



FIRST FLOOR



## WILMSLOW: ON YOUR DOORSTEP

The location boasts more than just practical commuting, within walking distance is Wilmslow Leisure Centre which has gym and swimming facilities and an abundance of shops and restaurants, including Gail's Bakery, Smoke, Juniper, Water Lane Cafe, Stolen Lamb all on your doorstep, ensuring a well-rounded and easily accessible environment.





**WILMSLOW STATION**

**LEISURE CENTRE**

**BROWNS**

**2 MANCHESTER ROAD**

**PICCOLINOS**

**WAITROSE**

**POST OFFICE**

**TESCO EXPRESS**

**M&S FOOD**

**BARINDA**

**COSTA COFFEE**

**SUBURBAN GREEN**

**WATERSTONES**

**BOOTS**

**CIBO**

**SUPERDRUG**

**JUST BETWEEN FRIENDS**

**STARBUCKS**

**REX CINEMA**

**AURA**

**HOOPERS**

**WATER LANE CAFE**

**SPACE NK**

**LITTLE GREENE**

**STOLEN LAMB**

**JO MALONE LONDON**

**JUNIPER**

**JERK JUNCTION**

**SMOKE**

**WOOD FIRE SMOKE**

**GAIL'S BAKERY**

**SPRINGFIELD CAR PARK**

**HOTEL CHOCOLAT**

**UNAGI**

**COOK**

**WILMSLOW**

-  **WALKING**
-  2 Manchester Road
- Wilmslow Train Station 1 Min
- Leisure Centre 2 Mins
- Waitrose 3 Mins
- Tesco/Post Office 4 Mins
- Rex Cinema 5 Mins
- Cibo 5 Mins
- Water Lane Cafe 7 Mins
- Stolen Lamb 8 Mins
- Gail's Bakery 9 Mins
-  **10 MINS**
-  **DRIVING**
-  2 Manchester Road
- A34 2 Mins
- A555 5 Mins
- Manchester Airport 10 Mins
- M60 12 Mins
- M56 13 Mins
- Manchester City Centre 25 Mins
- M6 28 Mins
- Chester 50 Mins
- Liverpool 1 Hour
-  **1 HOUR**
-  **TRAIN**
-  Wilmslow
- Alderley Edge 3 Mins
- Chelford 7 Mins
- Cheadle Hulme 7 Mins
- Manchester Airport 8 Mins
- Stockport 13 Mins
- Manchester Piccadilly 27 Mins
- Crewe 28 Mins
- Stafford 40 Mins
- London Euston 1 Hour 55 Mins
-  **2 HOURS**



**2** MANCHESTER  
ROAD

WILMSLOW, SK9 1BG

**Orbit**  
**Developments**

**01625 588200**

**[orbit-developments.co.uk](http://orbit-developments.co.uk)**

Images are for illustrative purposes only and may not represent the exact office space available.

Developer reserves the right to change the scheme in the future. However, the Vendors / Lessors and Agents of intended as a general outline only, for the guidance of prospective purchasers or tenants, and do not constitute the whole or any part of an offer or contract. (2) They cannot guarantee the accuracy of any description, dimension or other details contained in these Particulars and prospective purchasers or tenants should not rely on them as statements of fact or representation, but must satisfy themselves as to the accuracy of such details. (3) No employee of the Agents has any authority to make or give any representation or warranty, or enter into any contract whatsoever in relation to the property (0326)