

1336 DILLINGHAM BLVD

UNIT 4 & 5

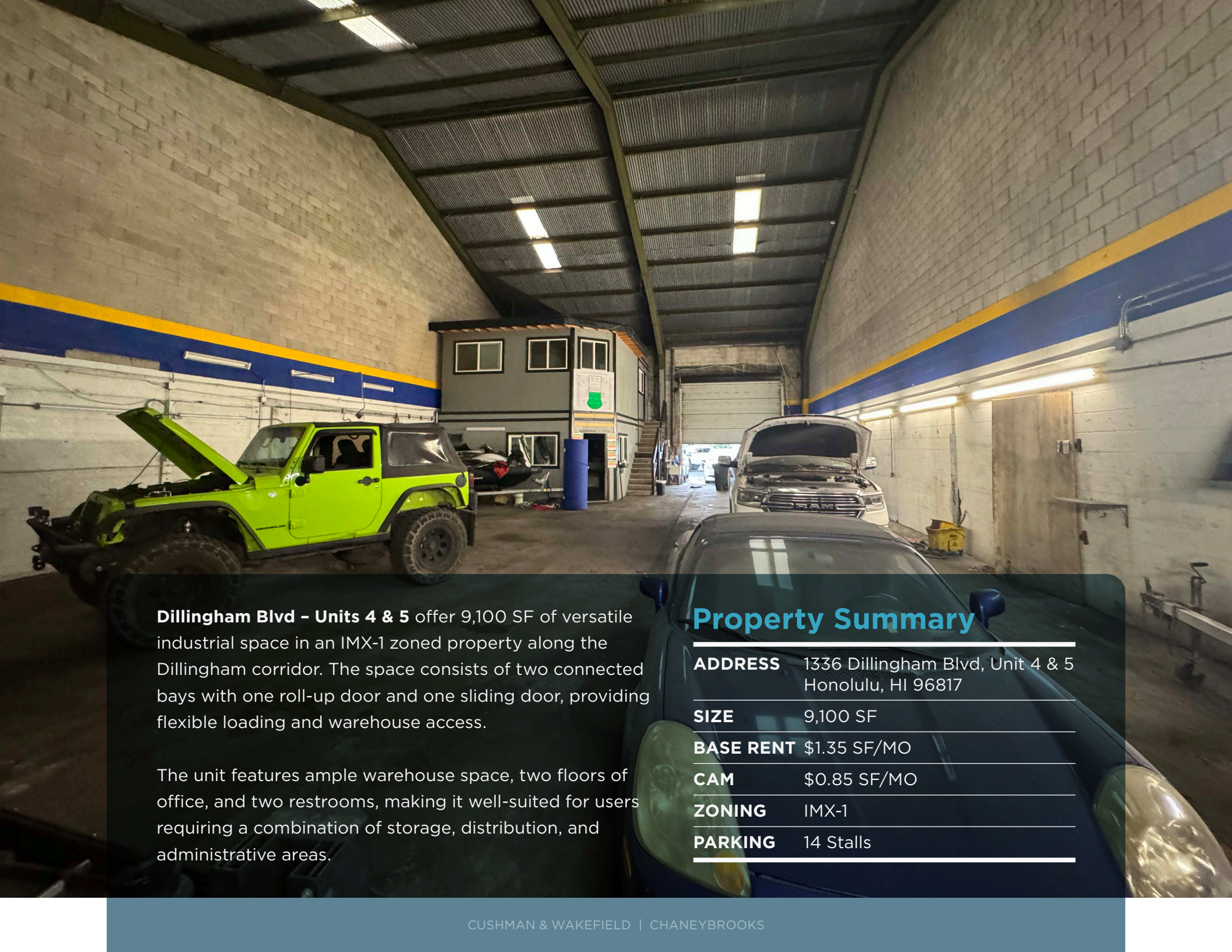
HONOLULU, HI 96817



FOR LEASE



ChaneyBrooks

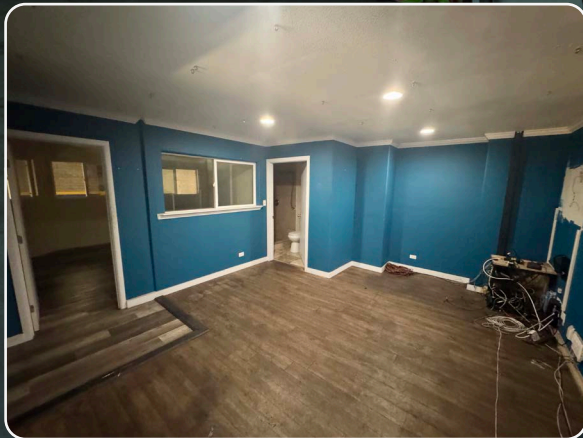


Dillingham Blvd - Units 4 & 5 offer 9,100 SF of versatile industrial space in an IMX-1 zoned property along the Dillingham corridor. The space consists of two connected bays with one roll-up door and one sliding door, providing flexible loading and warehouse access.

The unit features ample warehouse space, two floors of office, and two restrooms, making it well-suited for users requiring a combination of storage, distribution, and administrative areas.

Property Summary

ADDRESS	1336 Dillingham Blvd, Unit 4 & 5 Honolulu, HI 96817
SIZE	9,100 SF
BASE RENT	\$1.35 SF/MO
CAM	\$0.85 SF/MO
ZONING	IMX-1
PARKING	14 Stalls





**1336
DILLINGHAM BLVD**
HONOLULU, HI 96817

CONTACT US FOR MORE INFORMATION

ANTHONY PROVENZANO (B), CCIM, SIOR
HI LIC RB-22101
+1 808 387 3444
aprovenzano@chaneybrooks.com

KELLY A. VEA (S), CCIM
HI LIC RS-79079
+1 808 489 2703
kvea@chaneybrooks.com

TREVOR BLAKE (S)
HI LIC RS-87251
+1 808 778 7409
tblake@chaneybrooks.com

1440 Kapiolani Blvd, Suite 1010
Honolulu, Hawaii 96814
www.chaneybrooks.com



©2026 CUSHMAN & WAKEFIELD CHANEYBROOKS. NO WARRANTY OR REPRESENTATION, EXPRESS OR IMPLIED, IS MADE TO THE ACCURACY OR COMPLETENESS OF THE INFORMATION CONTAINED HEREIN, AND SAME IS SUBMITTED SUBJECT TO ERRORS, OMISSIONS, CHANGE OF PRICE, RENTAL OR OTHER CONDITIONS, WITHDRAWAL WITHOUT NOTICE, AND TO ANY SPECIAL LISTING CONDITIONS IMPOSED BY THE PROPERTY OWNER(S). AS APPLICABLE, WE MAKE NO REPRESENTATION AS TO THE CONDITION OF THE PROPERTY (OR PROPERTIES) IN QUESTION.



ChaneyBrooks