

# 3,600 - 52,700 SF INDUSTRIAL



## FOR LEASE



### UNDER NEW OWNERSHIP AND MANAGEMENT

## 1300 Falahee Rd

Jackson, Michigan 49203

### Property Highlights

- Space Available ranging from 3,600-52,700 SF
- Ample paved parking and truck courts allow for smooth logistics flow and convenient employee access.
- Strategically located just 1 mile from US-127 and 3 miles from I-94, offering direct access to Michigan's key transportation corridors.
- Central to major Michigan markets including Detroit, Ann Arbor, Lansing, and Kalamazoo, ideal for regional distribution and supply chain operations.
- Features a 16-foot clear height, ideal for distribution, manufacturing, or storage operations requiring efficient vertical space.

### OFFERING SUMMARY

Lease Rate:	Contact Leasing Agents
Available SF:	3,600 - 52,700 SF
Building Size:	742,023 SF

### SPACES

### SPACE SIZE

Unit 1	52,700 SF
Unit 2	46,000 SF
Unit 3	13,600 SF
Unit 4	3,600 SF
Unit 5	16,329 SF



Commercial Real Estate Services, Worldwide.

[www.naifarberman.com](http://www.naifarberman.com)

#### Jacob Brown

Sales Associate | 248.351.6331  
[brown@farberman.com](mailto:brown@farberman.com)

#### Brad Margolis

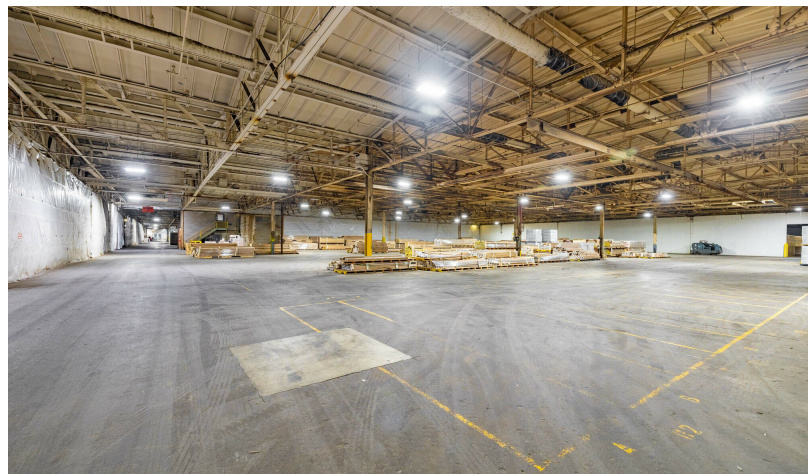
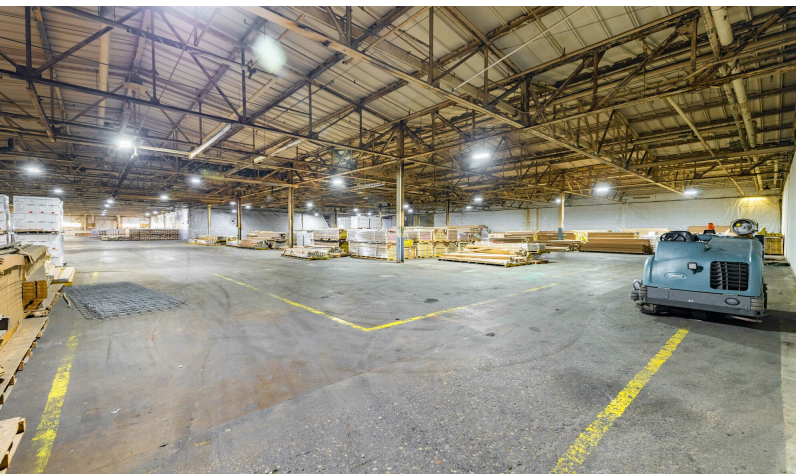
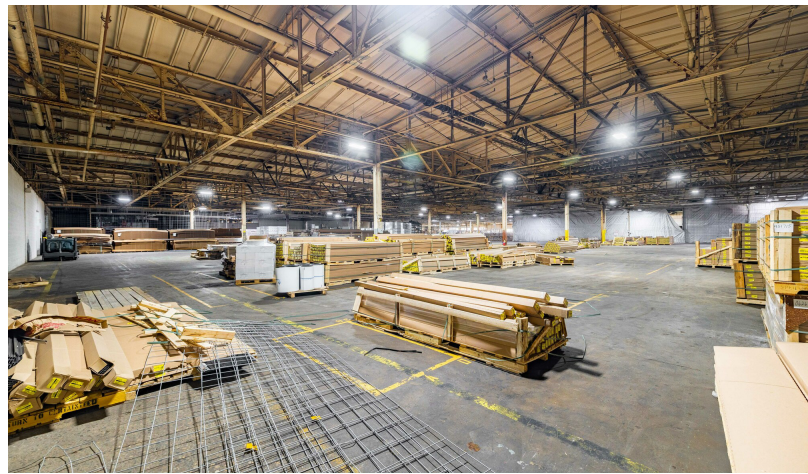
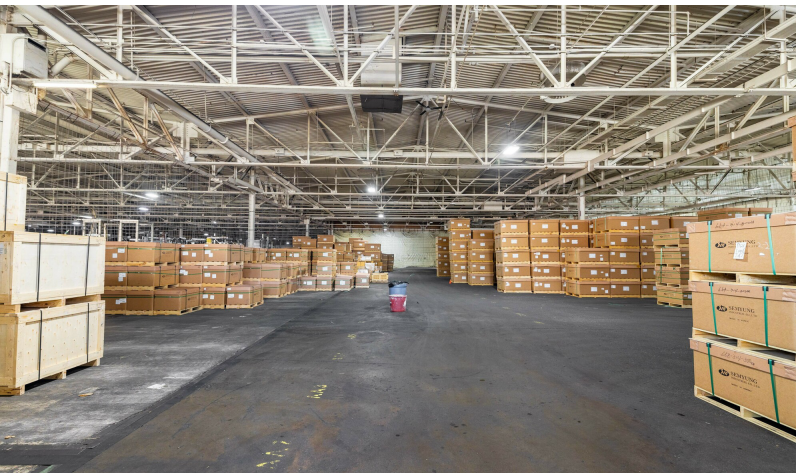
Senior Vice President | 248.351.4367  
[bmargolis@farberman.com](mailto:bmargolis@farberman.com)

NO WARRANTY, EXPRESS OR IMPLIED, IS MADE AS TO THE ACCURACY OF THE INFORMATION CONTAINED HEREIN. THIS INFORMATION IS SUBMITTED SUBJECT TO ERRORS, OMISSIONS, CHANGE OF PRICE, RENTAL OR OTHER CONDITIONS, WITHDRAWAL WITHOUT NOTICE, AND IS SUBJECT TO ANY SPECIAL LISTING CONDITIONS IMPOSED BY OUR PRINCIPALS. COOPERATING BROKERS, BUYERS, TENANTS AND OTHER PARTIES WHO RECEIVE THIS DOCUMENT SHOULD NOT RELY ON IT, BUT SHOULD USE IT AS A STARTING POINT OF ANALYSIS, AND SHOULD INDEPENDENTLY CONFIRM THE ACCURACY OF THE INFORMATION CONTAINED HEREIN THROUGH A DUE DILIGENCE REVIEW OF THE BOOKS, RECORDS, FILES AND DOCUMENTS THAT CONSTITUTE RELIABLE SOURCES OF THE INFORMATION DESCRIBED HEREIN. LOGOS ARE FOR IDENTIFICATION PURPOSES ONLY AND MAY BE TRADEMARKS OF THEIR RESPECTIVE COMPANIES. NAI Farberman, INC. CA BRE LIC. #01990696.

# 3,600 - 52,700 SF INDUSTRIAL



## FOR LEASE



Commercial Real Estate Services, Worldwide.

[www.naifarbman.com](http://www.naifarbman.com)

**Jacob Brown**  
Sales Associate | 248.351.6331  
[brown@farbman.com](mailto:brown@farbman.com)

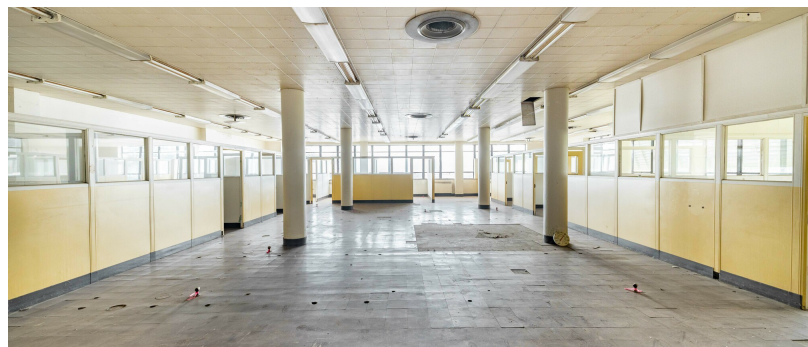
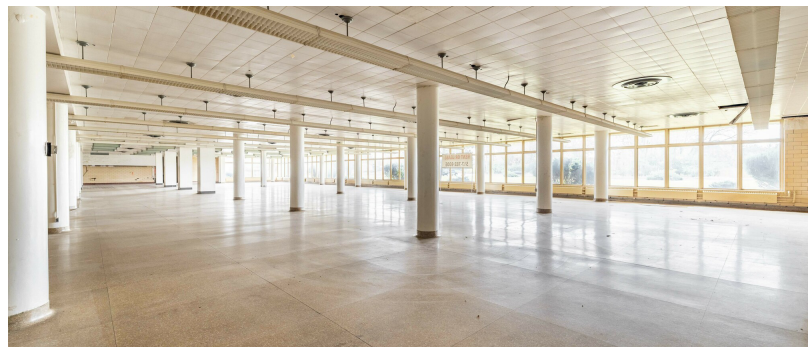
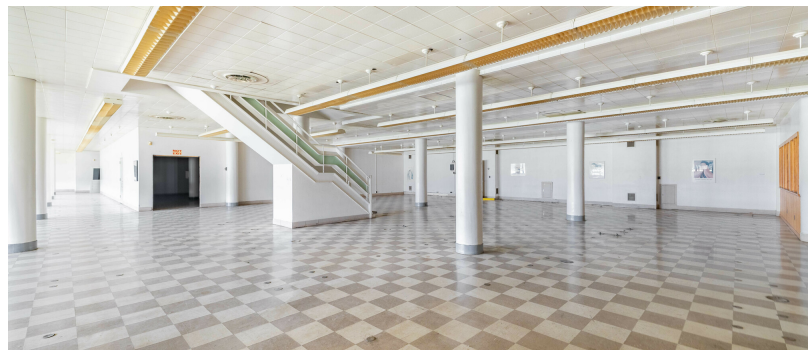
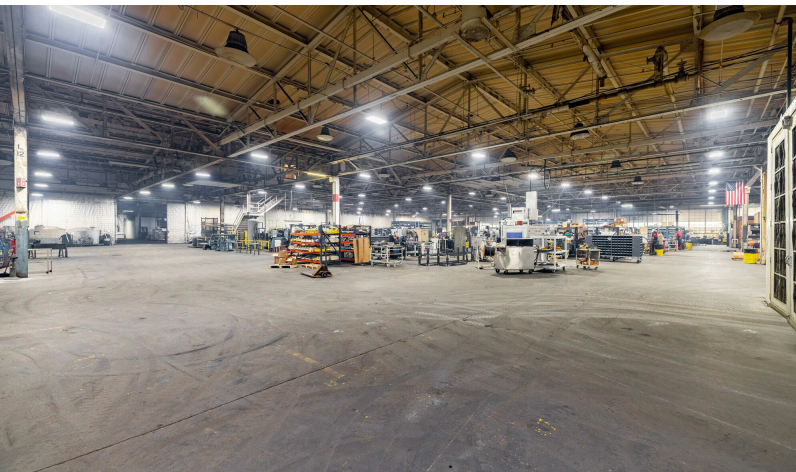
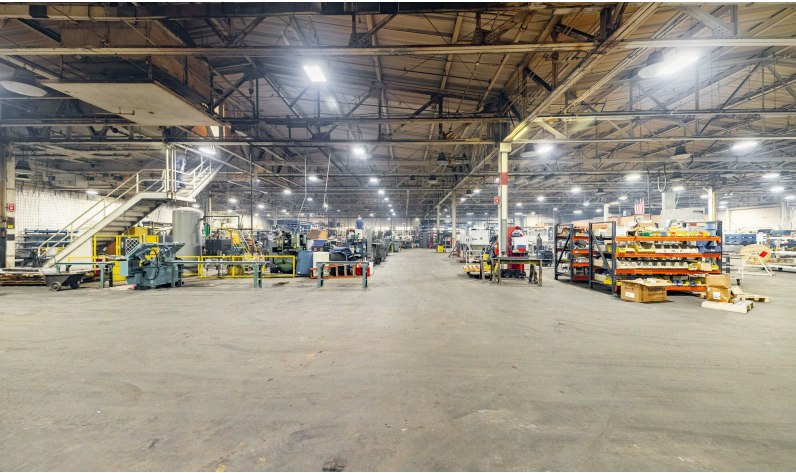
**Brad Margolis**  
Senior Vice President | 248.351.4367  
[bmargolis@farbman.com](mailto:bmargolis@farbman.com)

NO WARRANTY, EXPRESS OR IMPLIED, IS MADE AS TO THE ACCURACY OF THE INFORMATION CONTAINED HEREIN. THIS INFORMATION IS SUBMITTED SUBJECT TO ERRORS, OMISSIONS, CHANGE OF PRICE, RENTAL OR OTHER CONDITIONS, WITHDRAWAL WITHOUT NOTICE, AND IS SUBJECT TO ANY SPECIAL LISTING CONDITIONS IMPOSED BY OUR PRINCIPALS, COOPERATING BROKERS, BUYERS, TENANTS AND OTHER PARTIES WHO RECEIVE THIS DOCUMENT SHOULD NOT RELY ON IT, BUT SHOULD USE IT AS A STARTING POINT OF ANALYSIS, AND SHOULD INDEPENDENTLY CONFIRM THE ACCURACY OF THE INFORMATION CONTAINED HEREIN THROUGH A DUE DILIGENCE REVIEW OF THE BOOKS, RECORDS, FILES AND DOCUMENTS THAT CONSTITUTE RELIABLE SOURCES OF THE INFORMATION DESCRIBED HEREIN. LOGOS ARE FOR IDENTIFICATION PURPOSES ONLY AND MAY BE TRADEMARKS OF THEIR RESPECTIVE COMPANIES. NAI Farbman, INC. CA BRE LIC. #01990696.

# 3,600 - 52,700 SF INDUSTRIAL



## FOR LEASE



Commercial Real Estate Services, Worldwide.

[www.naifarbman.com](http://www.naifarbman.com)

**Jacob Brown**  
Sales Associate | 248.351.6331  
[brown@farbman.com](mailto:brown@farbman.com)

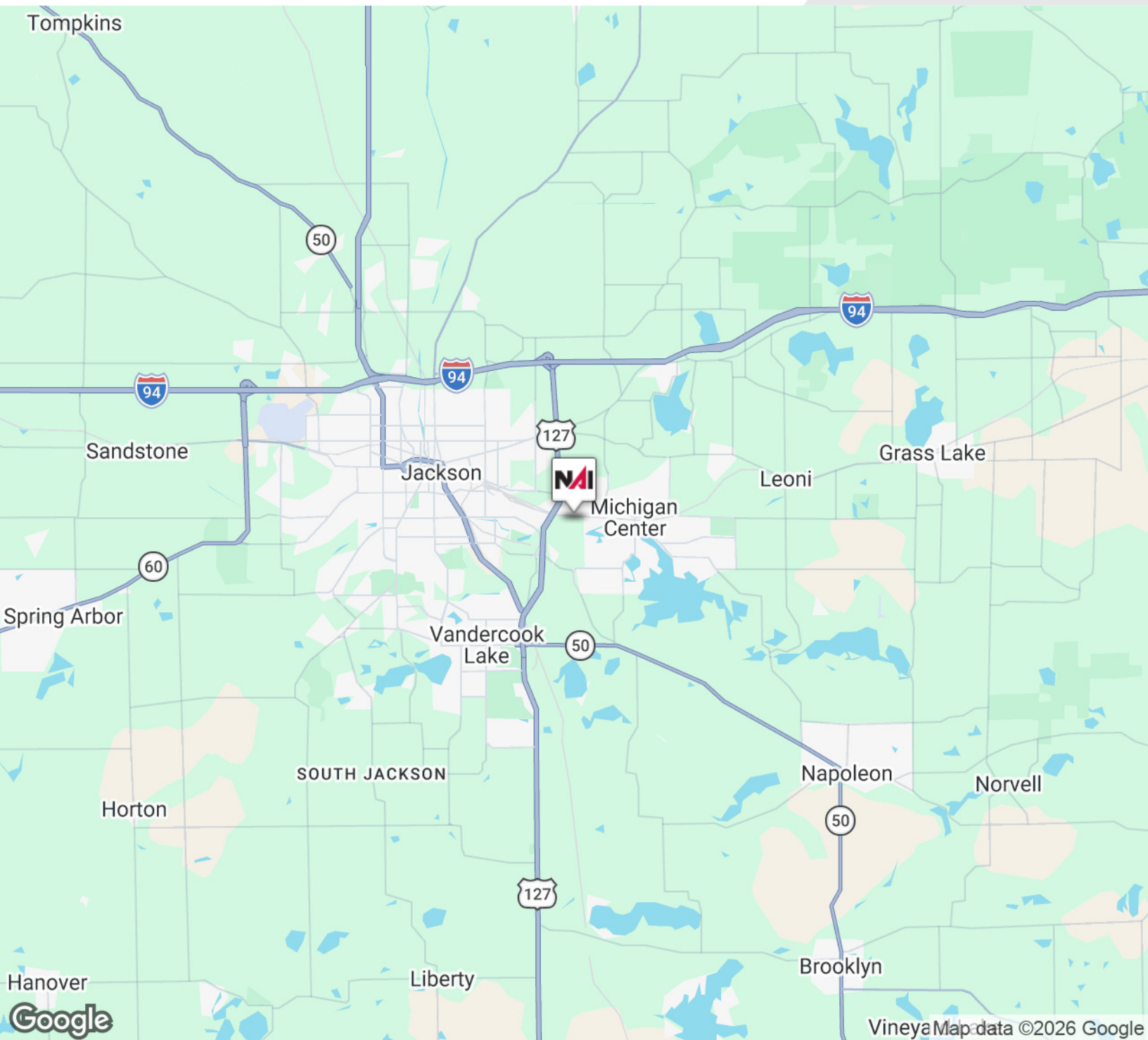
**Brad Margolis**  
Senior Vice President | 248.351.4367  
[bmargolis@farbman.com](mailto:bmargolis@farbman.com)

NO WARRANTY, EXPRESS OR IMPLIED, IS MADE AS TO THE ACCURACY OF THE INFORMATION CONTAINED HEREIN. THIS INFORMATION IS SUBMITTED SUBJECT TO ERRORS, OMISSIONS, CHANGE OF PRICE, RENTAL OR OTHER CONDITIONS, WITHDRAWAL WITHOUT NOTICE, AND IS SUBJECT TO ANY SPECIAL LISTING CONDITIONS IMPOSED BY OUR PRINCIPALS, COOPERATING BROKERS, BUYERS, TENANTS AND OTHER PARTIES WHO RECEIVE THIS DOCUMENT SHOULD NOT RELY ON IT, BUT SHOULD USE IT AS A STARTING POINT OF ANALYSIS, AND SHOULD INDEPENDENTLY CONFIRM THE ACCURACY OF THE INFORMATION CONTAINED HEREIN THROUGH A DUE DILIGENCE REVIEW OF THE BOOKS, RECORDS, FILES AND DOCUMENTS THAT CONSTITUTE RELIABLE SOURCES OF THE INFORMATION DESCRIBED HEREIN. LOGOS ARE FOR IDENTIFICATION PURPOSES ONLY AND MAY BE TRADEMARKS OF THEIR RESPECTIVE COMPANIES. NAI Farbman, INC. CA BRE LIC. #01990696.

# 3,600 - 52,700 SF INDUSTRIAL



## FOR LEASE



Commercial Real Estate Services, Worldwide.

[www.naifarbman.com](http://www.naifarbman.com)

**Jacob Brown**

Sales Associate | 248.351.6331  
[brown@farbman.com](mailto:brown@farbman.com)

**Brad Margolis**

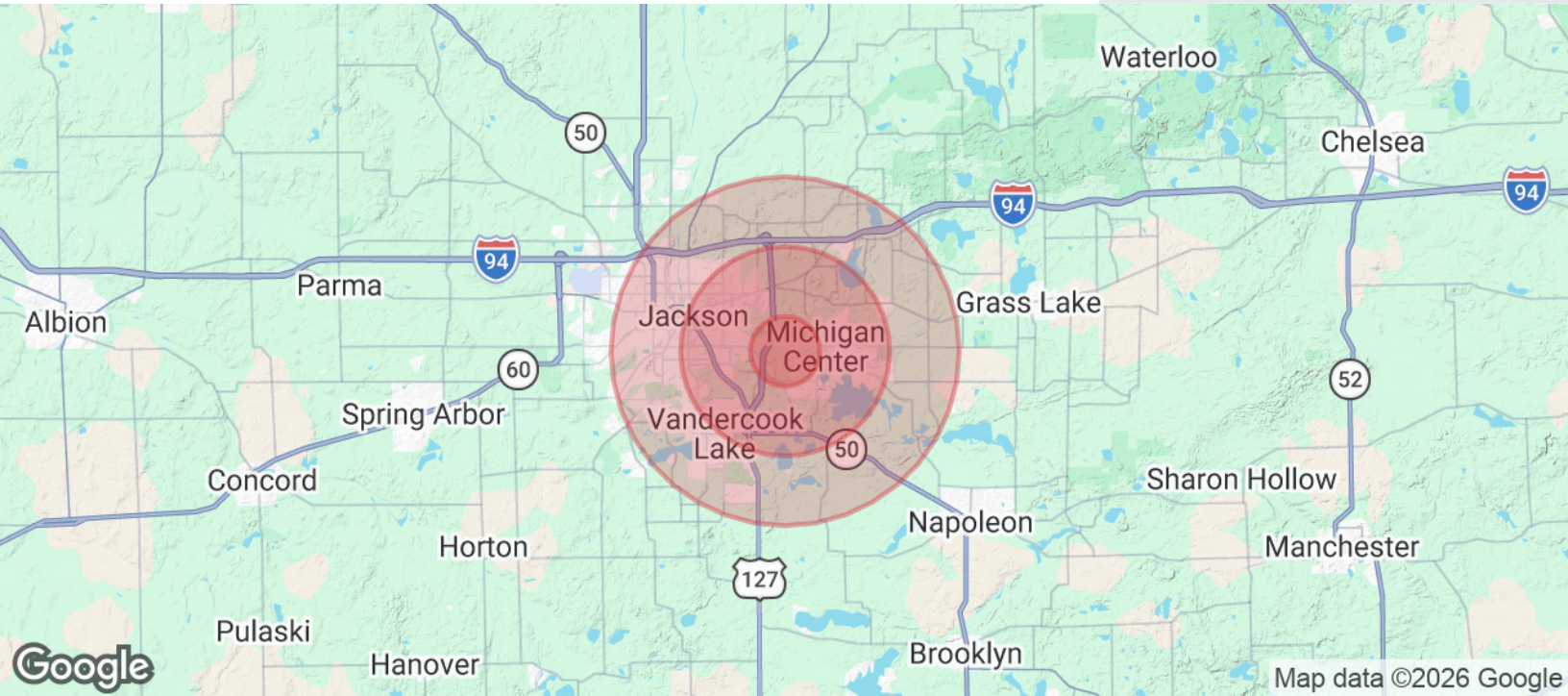
Senior Vice President | 248.351.4367  
[bmargolis@farbman.com](mailto:bmargolis@farbman.com)

NO WARRANTY, EXPRESS OR IMPLIED, IS MADE AS TO THE ACCURACY OF THE INFORMATION CONTAINED HEREIN. THIS INFORMATION IS SUBMITTED SUBJECT TO ERRORS, OMISSIONS, CHANGE OF PRICE, RENTAL OR OTHER CONDITIONS, WITHDRAWAL WITHOUT NOTICE, AND IS SUBJECT TO ANY SPECIAL LISTING CONDITIONS IMPOSED BY OUR PRINCIPALS, COOPERATING BROKERS, BUYERS, TENANTS AND OTHER PARTIES WHO RECEIVE THIS DOCUMENT SHOULD NOT RELY ON IT, BUT SHOULD USE IT AS A STARTING POINT OF ANALYSIS, AND SHOULD INDEPENDENTLY CONFIRM THE ACCURACY OF THE INFORMATION CONTAINED HEREIN THROUGH A DUE DILIGENCE REVIEW OF THE BOOKS, RECORDS, FILES AND DOCUMENTS THAT CONSTITUTE RELIABLE SOURCES OF THE INFORMATION DESCRIBED HEREIN. LOGOS ARE FOR IDENTIFICATION PURPOSES ONLY AND MAY BE TRADEMARKS OF THEIR RESPECTIVE COMPANIES. NAI Farbman, INC. CA BRE LIC. #01990696.

# 3,600 - 52,700 SF INDUSTRIAL



## FOR LEASE



### POPULATION

	1 MILE	3 MILES	5 MILES
Total Population	1,788	24,177	67,023
Average Age	41	39	40
Average Age (Male)	39	39	39
Average Age (Female)	42	40	41

### HOUSEHOLDS & INCOME

	1 MILE	3 MILES	5 MILES
Total Households	739	9,832	26,382
# of Persons per HH	2.4	2.5	2.5
Average HH Income	\$75,554	\$64,851	\$64,472
Average House Value	\$149,373	\$150,607	\$171,210

Demographics data derived from AlphaMap



Commercial Real Estate Services, Worldwide.

www.naifarbman.com

**Jacob Brown**

Sales Associate | 248.351.6331  
brown@farbman.com

**Brad Margolis**

Senior Vice President | 248.351.4367  
bmargolis@farbman.com

NO WARRANTY, EXPRESS OR IMPLIED, IS MADE AS TO THE ACCURACY OF THE INFORMATION CONTAINED HEREIN. THIS INFORMATION IS SUBMITTED SUBJECT TO ERRORS, OMISSIONS, CHANGE OF PRICE, RENTAL OR OTHER CONDITIONS, WITHDRAWAL WITHOUT NOTICE, AND IS SUBJECT TO ANY SPECIAL LISTING CONDITIONS IMPOSED BY OUR PRINCIPALS, COOPERATING BROKERS, BUYERS, TENANTS AND OTHER PARTIES WHO RECEIVE THIS DOCUMENT SHOULD NOT RELY ON IT, BUT SHOULD USE IT AS A STARTING POINT OF ANALYSIS, AND SHOULD INDEPENDENTLY CONFIRM THE ACCURACY OF THE INFORMATION CONTAINED HEREIN THROUGH A DUE DILIGENCE REVIEW OF THE BOOKS, RECORDS, FILES AND DOCUMENTS THAT CONSTITUTE RELIABLE SOURCES OF THE INFORMATION DESCRIBED HEREIN. LOGOS ARE FOR IDENTIFICATION PURPOSES ONLY AND MAY BE TRADEMARKS OF THEIR RESPECTIVE COMPANIES. NAI Farbman, INC. CA BRE LIC. #01990696.