

FOR LEASE

CHACE MILL LEASE!

1 Mill Street, Suite 190 & 290, Burlington, VT



VT Commercial is pleased to offer this unique office suite at the historic Chace Mill in Burlington. The space features a well-balanced layout with open work areas and private offices, several of which offer views of the river. Additional amenities include a kitchenette, an open conference-style area, and a dedicated exterior entrance for private access. The suite is split-level, with each level featuring its own bathroom, and showcases classic mill character throughout—scalloped brick ceilings, exposed columns, and original beams. On-site parking is included in the rent, along with directory signage and flexible lease terms. Chace Mill is conveniently located and features an on-site café in the main building. Surface parking is available immediately outside the suite, which is situated at the rear of the property along the river. A plethora of food and gathering options are just a short walk over the bridge to Winooski. Don't hesitate to reach out as this suite will not last long! Contact us today to schedule a tour.

SIZE:

1,500 - 3,500 SF +/-

ZONING:

Office

PRICE:

\$14.50/SF NNN (\$6.55/SF plus gas and electric)

AVAILABLE:

Immediately

PARKING:

On site

LOCATION:

1 Mill Street, Burlington

Information contained herein is believed to be accurate, but is not warranted. This is not a legally binding offer to sell or lease.



For more information, please contact:

JOHN BEAL

802-598-1168

john.beal@vtcommercial.com

208 FLYNN AVENUE, STUDIO 2i

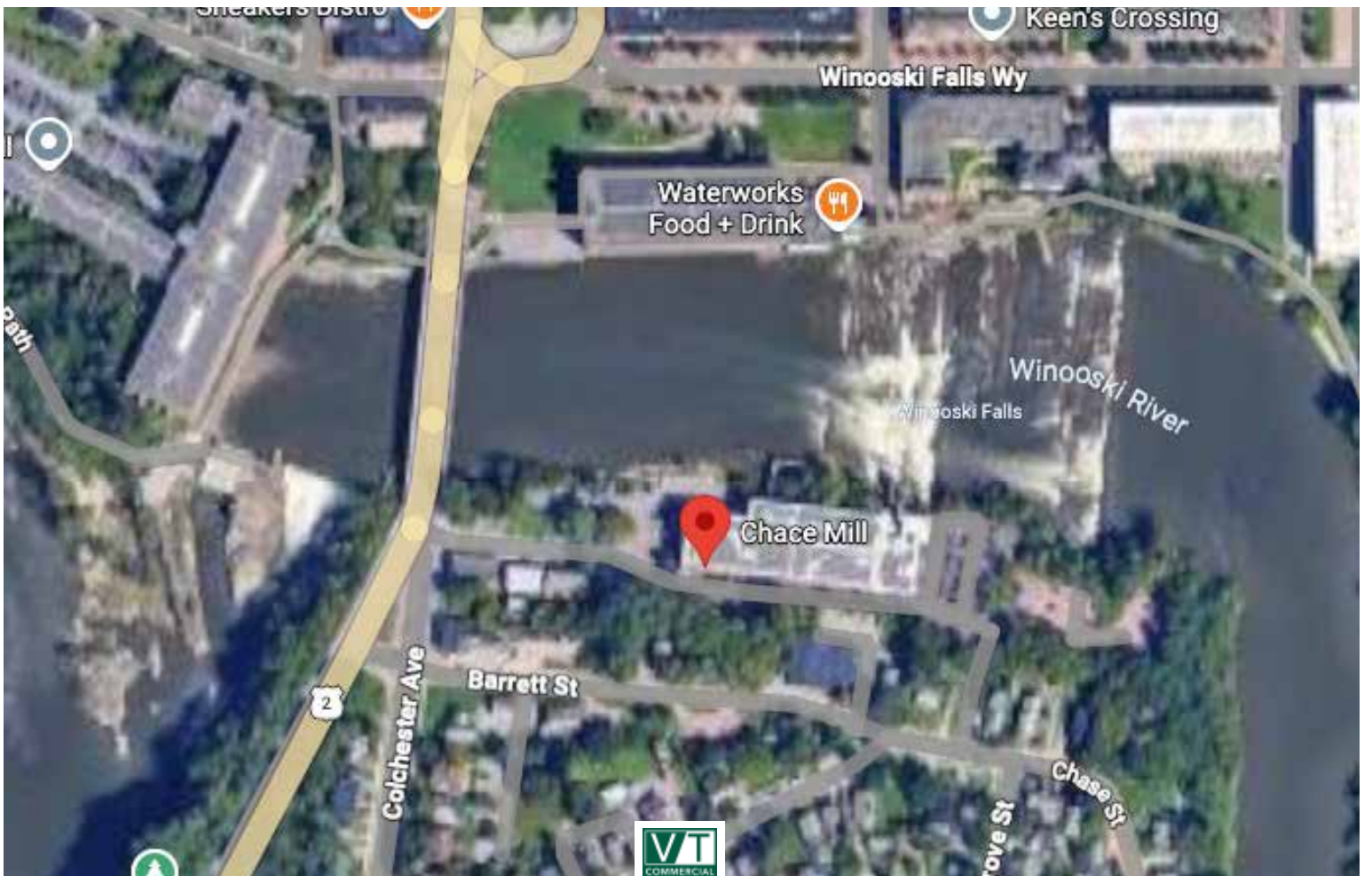
BURLINGTON, VT 05401

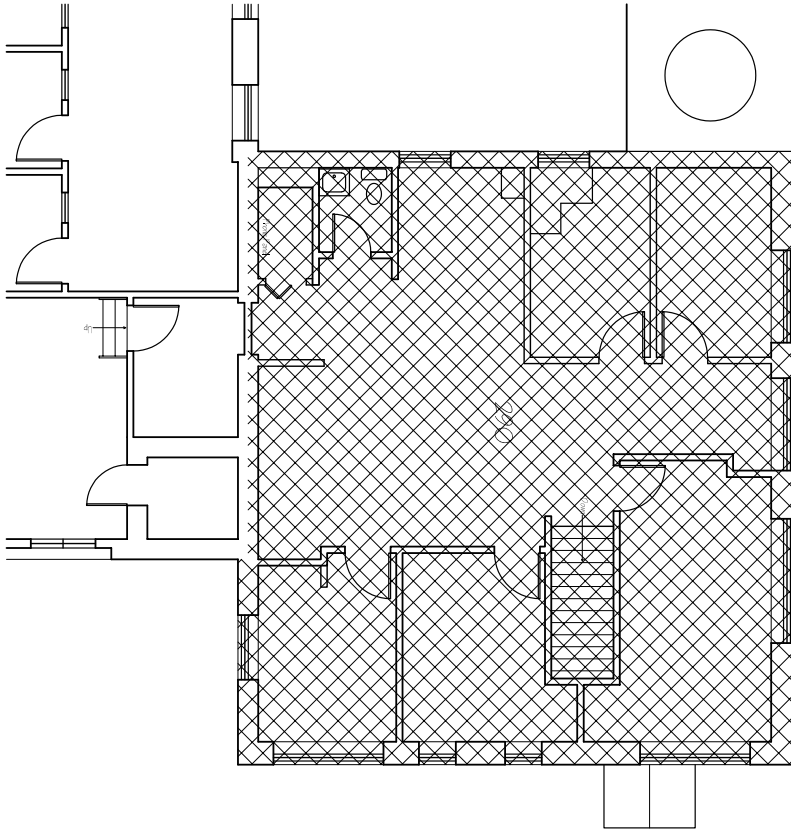
www.vtcommercial.com





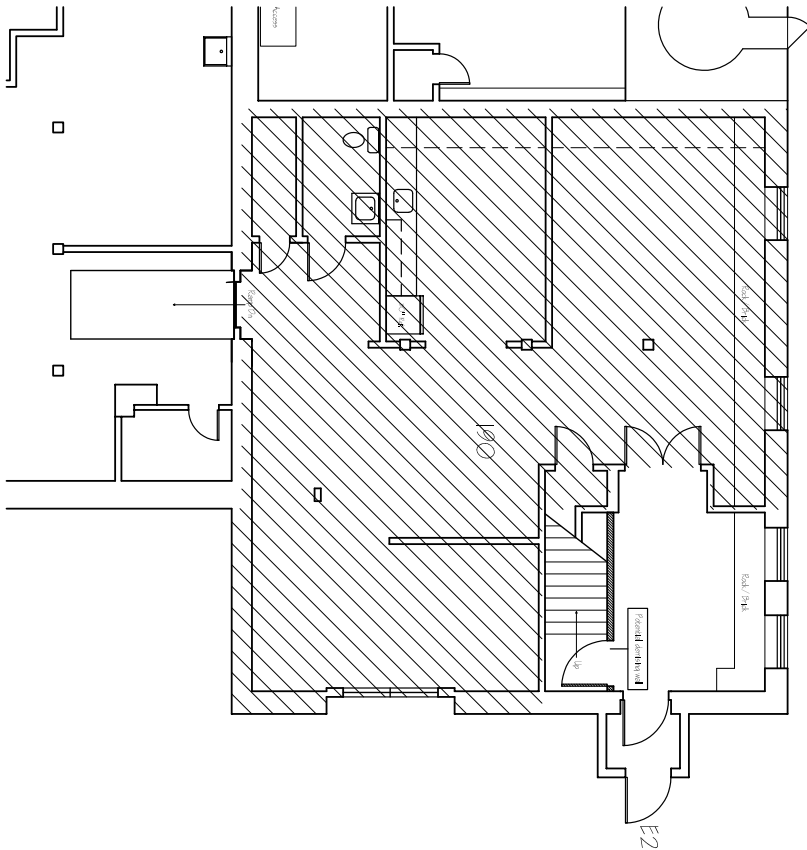






2 Suite 290

Scale: N.T.S.



1 Suite 190

Scale: N.T.S.