

FOR LEASE – OFFICE SPACE

1616 E. Wooster St, Ste. 14, Bowling Green, OH 43402

1,125 Square Feet, \$1,312.50 /MO.



Conveniently located just off I-75, the Greenwood Centre offers excellent accessibility and visibility along one of Bowling Green's primary commercial corridors. Positioned near Bowling Green State University, Historic Downtown Bowling Green, hotels, local businesses, and major athletic venues, this property provides a highly accessible location for a variety of retail, office, or service-oriented users.

Property Highlights

- Prime Location Along E. Wooster Street
- High Traffic Counts
- Surrounded by Hotels and Local Businesses
- Excellent Visibility and Accessibility
- Ideal for Retail, Office, or Service Uses

For More Information



Steve Green, Broker
419.360.7990
sgreen@meccabg.com



Mark Remeis, Broker
419.353.5800
mremeis@aagreen.com

FOR LEASE – OFFICE SPACE

1616 E. Wooster St, Ste. 14, Bowling Green, OH 43402

1,125
Square Feet
Available

Offer Summary

Lease Rate: \$14.00/SF = \$1,312.50/MO

Service Type: NNN

Available Space: 1,125 SF

General & Building Information

Number of Stories: One (In-Line), Two (Courtyard)

Year Constructed: 1970 (Remodeled in 1989 & 2010)

Condition: Very Good

Acreage: 2.84

County: Wood

Zoning: B-2 General Commercial

Parking Spaces: 377 + Common Spaces

Exterior Walls: Brick

Structural System: Block with Steel Frame

Roof: Flat and Standing Seam

Floors: Concrete

Basement: N/A

Restrooms: One

Ceiling Height: 12 Ft.

Heat: Forced Air

Air Conditioning: Yes

Elevator: Yes (The Courtyard)

Exterior Signage: Yes

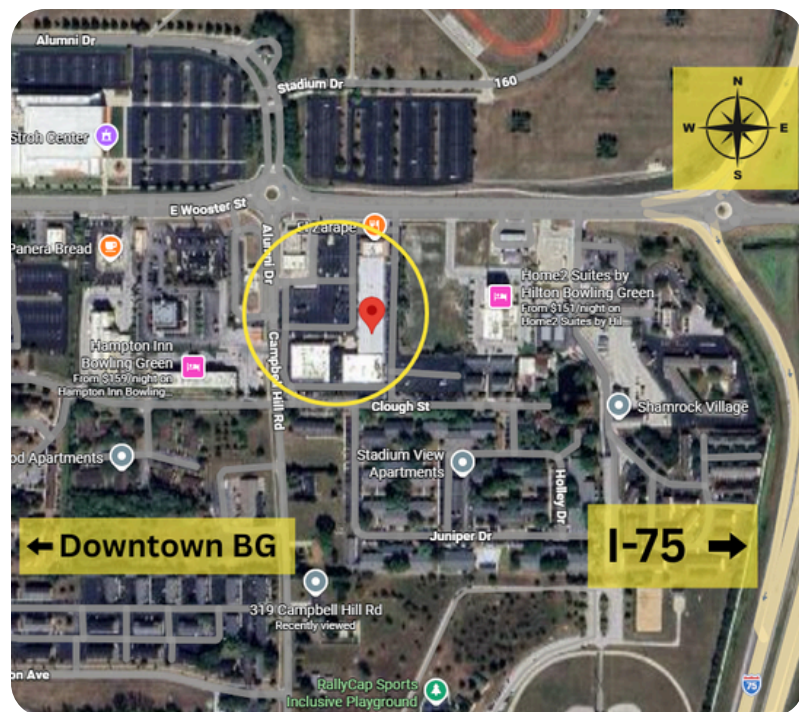


Unit Information

Current Occupant: Town & Country A.C.H

Occupancy Date: Available 9/1/2026

Sign on Property: Yes



FOR LEASE - OFFICE SPACE

1616 E. Wooster St, Ste. 14, Bowling Green, OH 43402

1,125
Square Feet
Available

