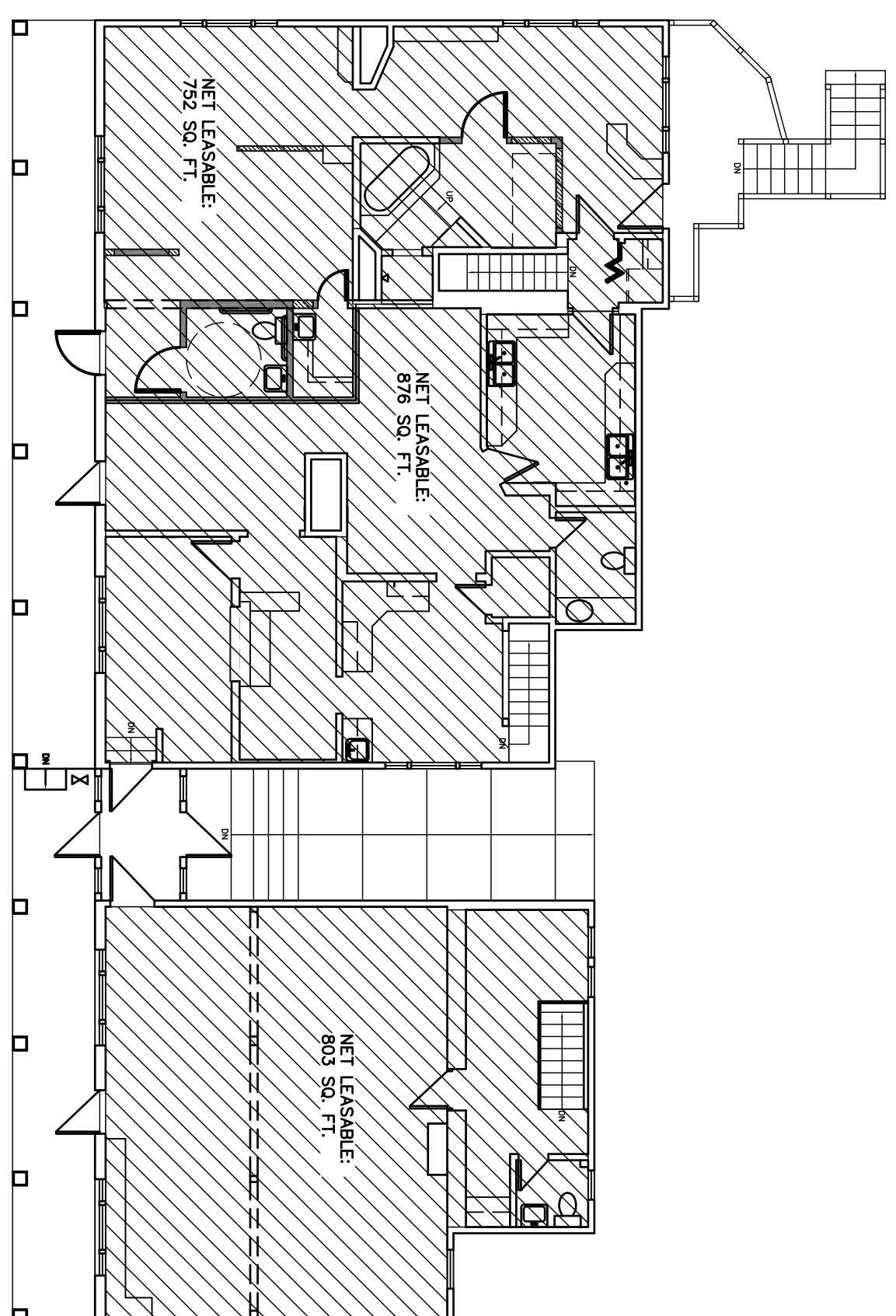


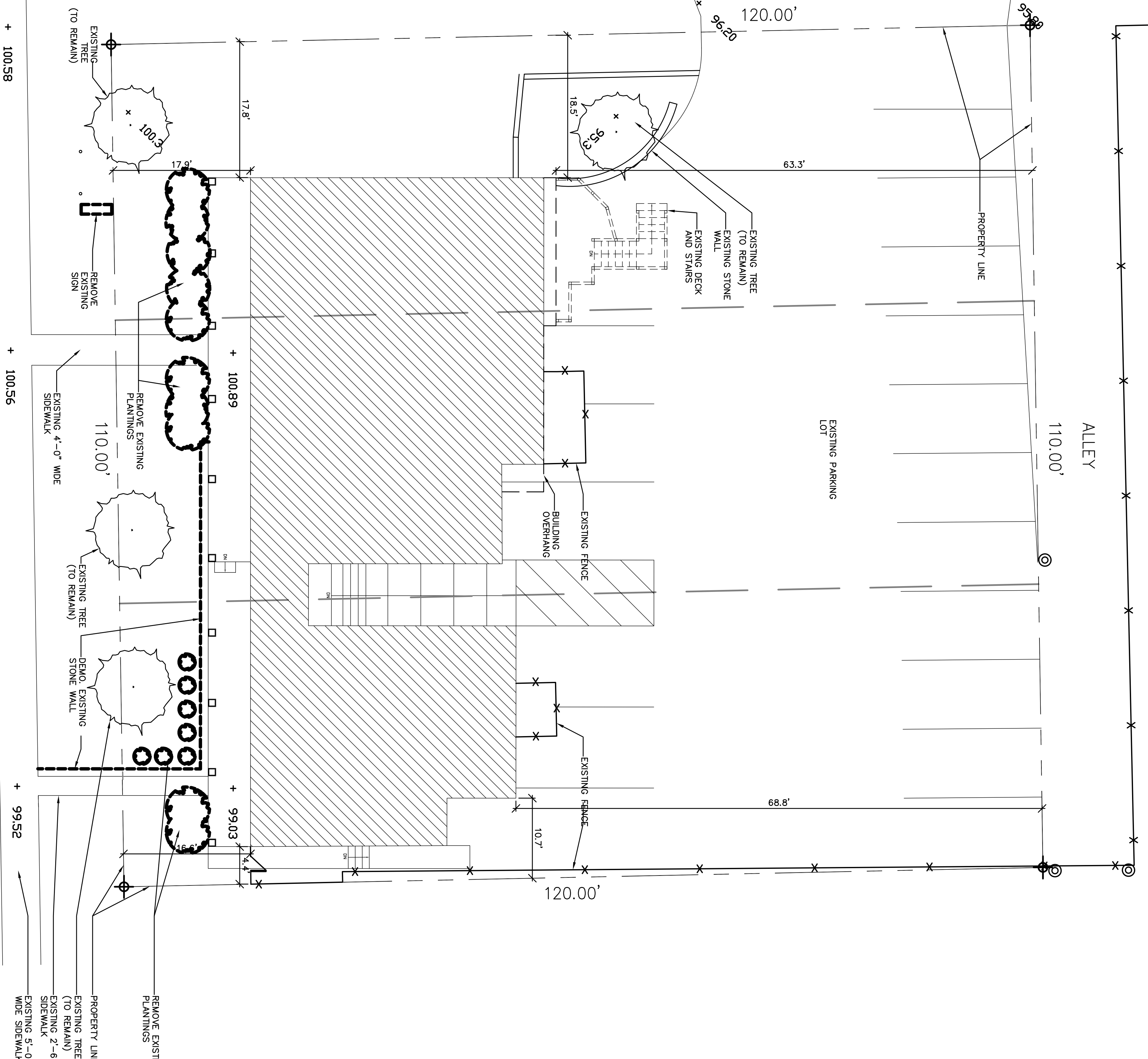
3  
1/8"=1'-0"  
BASEMENT REFERENCE PLAN



2  
1/8"=1'-0"  
FIRST FLOOR REFERENCE PLAN



1  
NO SCALE  
VICINITY MAP



4  
1/8"=1'-0"  
SITE DEMOLITION PLAN

PIPER-WIND ARCHITECTS, INC.  
Architecture, Planning, and Design  
Power and Light Building, Top Floor  
106 W 14th Street, Suite 3050  
Kansas City, Missouri 64105  
Phone (816) 474-3050  
Fax (816) 474-3051

# 4803 RAINBOW

4803 RAINBOW BOULEVARD, WESTWOOD, KANSAS 66205

FOR PERMIT

PROJECT NO. JULY 7, 2005  
DRAWN BY: JMS  
CHECKED BY: JMS  
REVISED DATE: DESCRIPTION  
SHEET TITLE & NUMBER  
SITE DEMOLITION PLAN

COPYRIGHT © 2003  
PIPER-WIND ARCHITECTS, INC.

A001