

# 24100 EL TORO ROAD SUITE F

LAGUNA WOODS, CA 92637



MEDICAL/OFFICE SUBLEASE | AVAILABLE WITHIN 30-60 DAYS

2,585 RSF

HUGHESMARINO

# BUILDING INFORMATION



## **BUILDING**

Valencia Center

## **ADDRESS**

24100 El Toro Rd, Suite F,  
Laguna Woods, CA 92637

## **AVAILABLE**

Within 30-60 Days

## **ASKING RATE**

\$3.15 MG PSF

+ Separately Metered  
Electrical and Janitorial

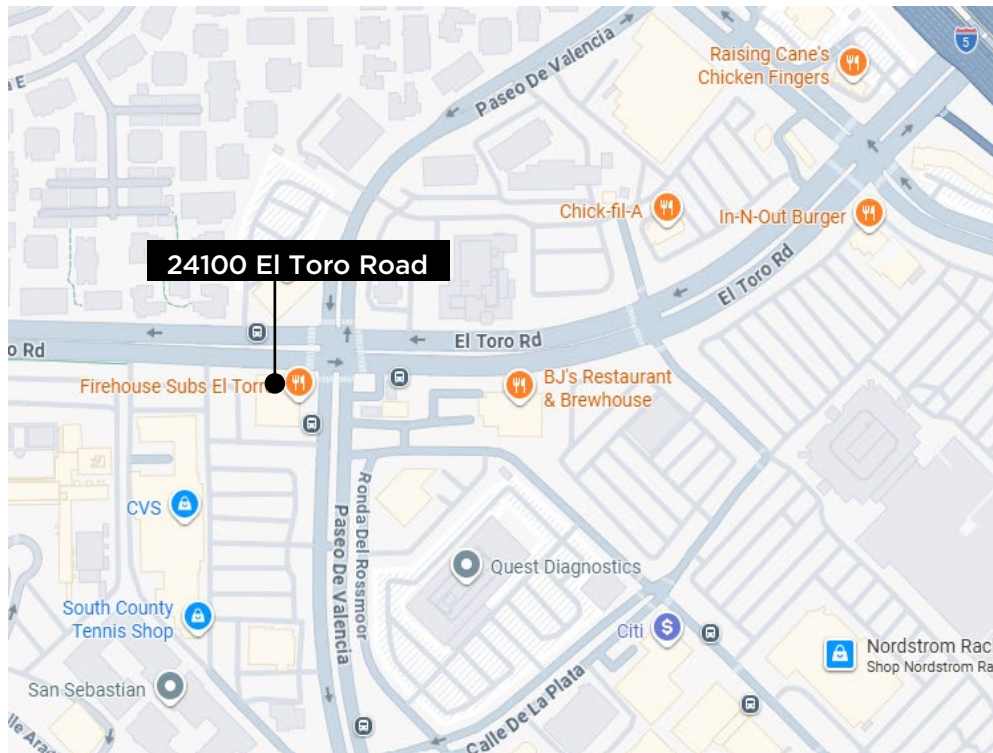
## **AVAILABLE THROUGH**

February 29, 2028

## **ADDITIONAL FEATURES**

- Access via Stairs and/or Elevator Directly to Suite
- Second-floor Medical/Office Space
- Exterior Signage Rights on the South Elevation of the Building
- Permitted Use is a Weight Loss Clinic Built Out for Medical/Wellness

# LOCATION HIGHLIGHTS



## RESTAURANTS



## FREEWAY ACCESS



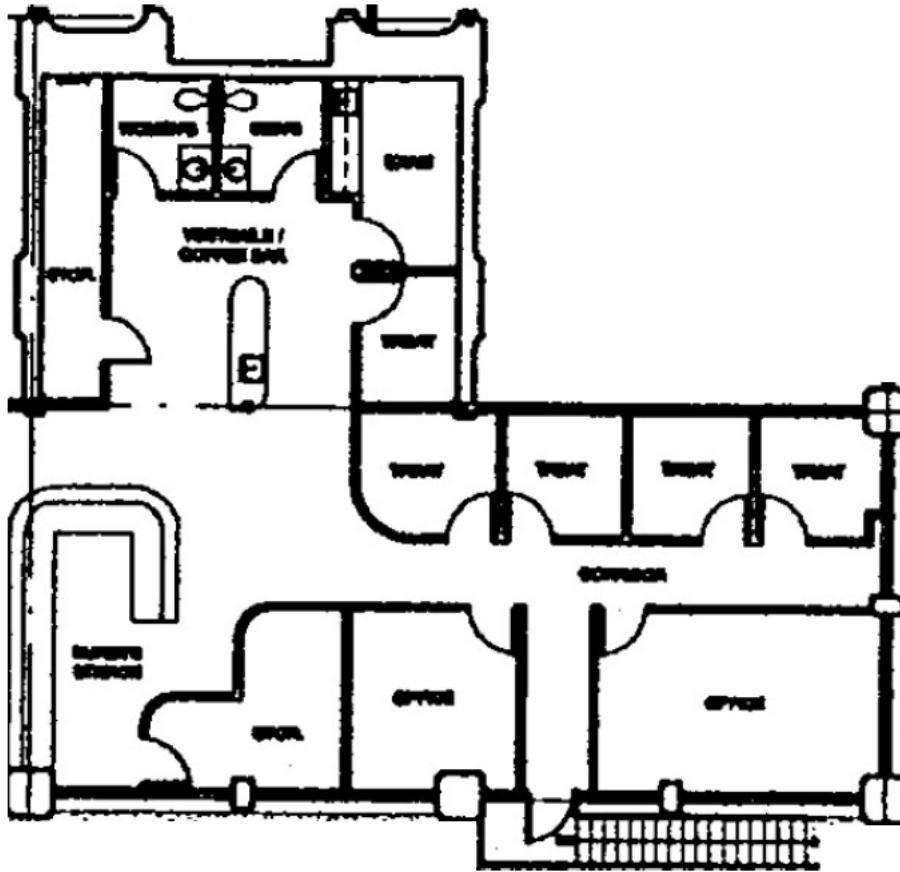
## AIRPORT ACCESS



## KEY HIGHLIGHTS

- Excellent I-5 access and visibility
- Abundant Retail and Restaurant Options
- Minutes from Mission Viejo, Lake Forest, and Irvine
- Less than 15 Minutes from John Wayne Airport
- Located at the Corner of El Toro Road and Paseo de Valencia

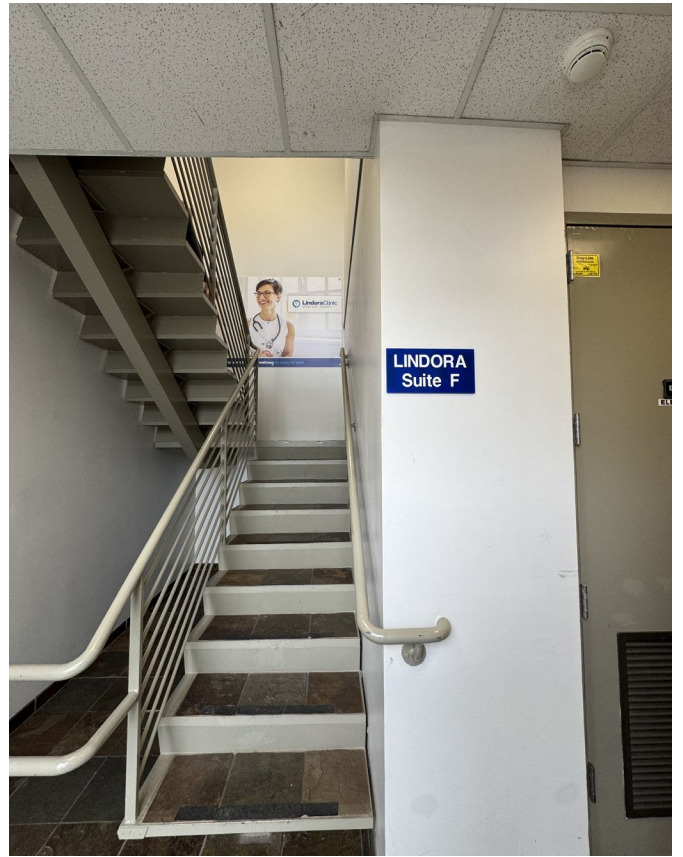
# FLOOR PLAN



## SPACE HIGHLIGHTS

- Four (4) Exam Rooms
- One (1) Consultation or Conference Room
- One (1) Executive Office
- One (1) Kitchen
- Two (2) Restrooms
- Large Waiting or Reception Area

24100 EL TORO ROAD, SUITE F



24100 EL TORO ROAD, SUITE F



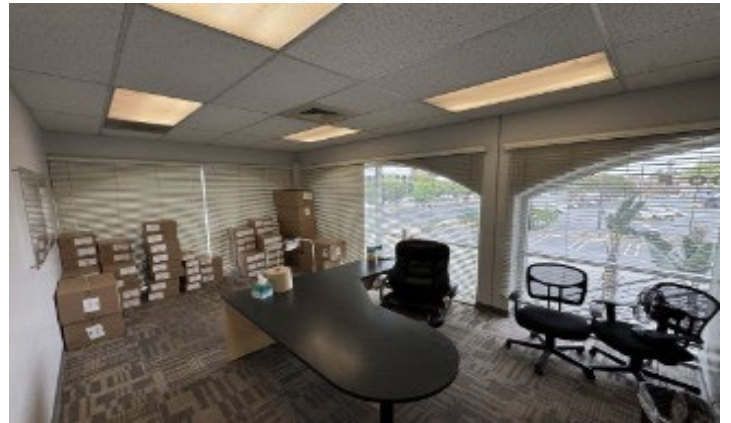
24100 EL TORO ROAD, SUITE F



24100 EL TORO ROAD, SUITE F



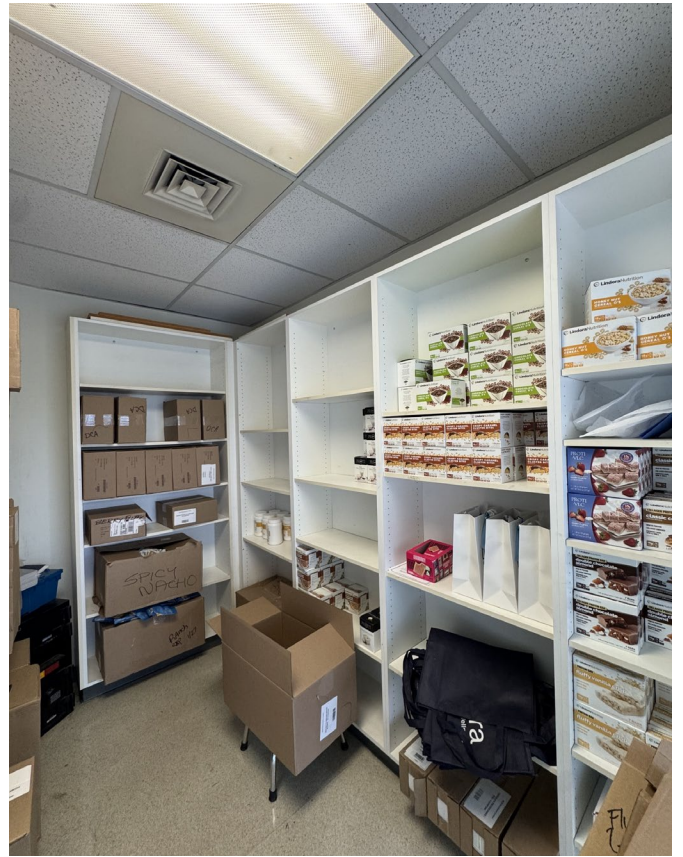
24100 EL TORO ROAD, SUITE F



24100 EL TORO ROAD, SUITE F



24100 EL TORO ROAD, SUITE F



# CONTACT INFORMATION



**WILL TOBER**  
will@hughesmarino.com  
949.274.0605  
Broker Lic. #02001182



**BRYCE ASHTON**  
bryce@hughesmarino.com  
949.230.0166  
License #02232756