

Monroe Crossing

200 Joan Warren Way, Monroe Township, NJ

Join Starbucks, Wu's Dumpling & Kiddie Academy!



2,087 RSF

2,121 RSF

1,981 RSF



1,981 – 6,189 RSF & 0.59 Pad Available for Lease

David Townes
Managing Director
+1 917 993 5515
david.townes@jll.com

Alana Friedman
Vice President
+1 201 741 0990
alana.friedman@jll.com



Property Location

- » Mixed-use development on Route 33 with 186 townhomes and 48 residential units
- » Easy access to NJ Turnpike, Route 133 and Route 130
- » Excellent location surrounded by national retailers, schools, offices, logistics centers, and pharmaceutical companies
- » Strong visibility on Route 33 (30,933 VPD)



Space Availability

- » 1,981 – 6,189 RSF
- » 0.59 AC Pad plus 0.15 AC of shared lot
- » Asking Rent: Upon Request



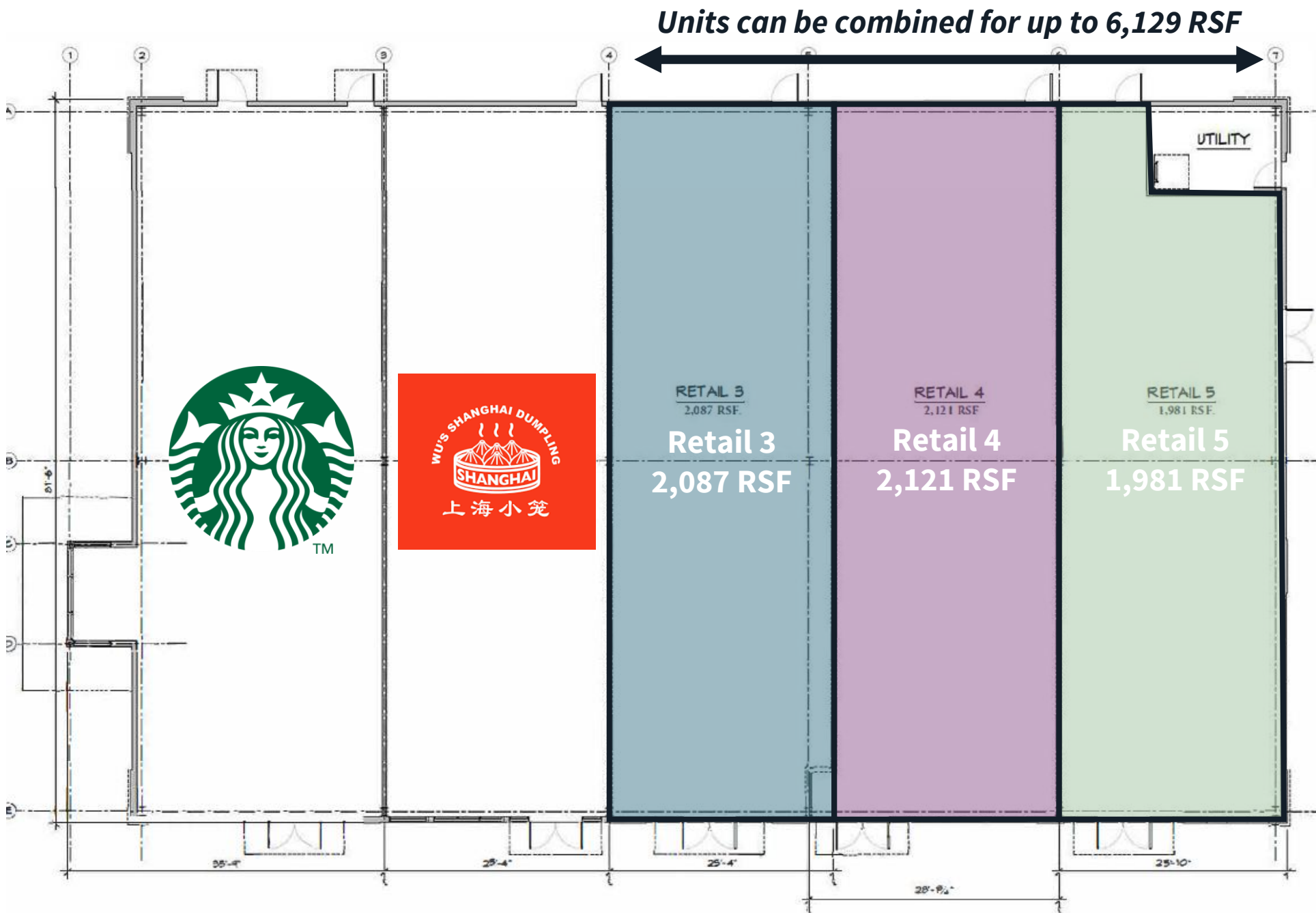
Neighboring Tenants



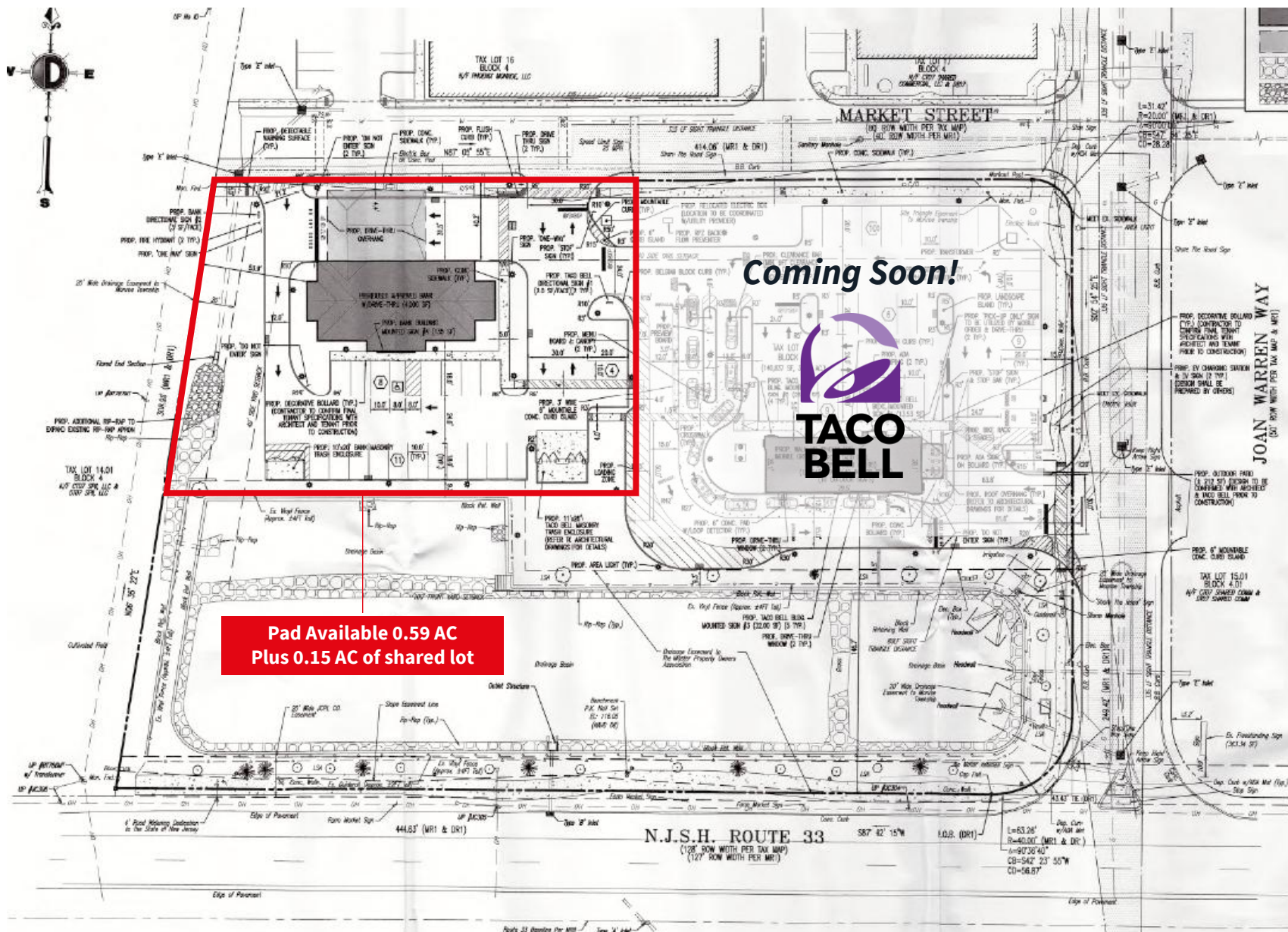
Site Plan



Floor Plan



Survey – 0.59 AC Pad + 0.15 AC Shared Lot



Retail Aerial



Demographics



33,451
Population



\$111,884
Med. HH Income



7,088
Employees



829
Businesses

Demographics taken within a 3-mile radius
Source: Costar 2024

David Townes
Managing Director
M +1 917 993 5515
david.townes@jll.com

Alana Friedman
Vice President
M +1 201 741 0990
alana.friedman@jll.com

Although information has been obtained from sources deemed reliable, JLL does not make any guarantees, warranties or representations, express or implied, as to the completeness or accuracy as to the information contained herein. Any projections, opinions, assumptions or estimates used are for example only. There may be differences between projected and actual results, and those differences may be material. JLL does not accept any liability for any loss or damage suffered by any party resulting from reliance on this information. If the recipient of this information has signed a confidentiality agreement with JLL regarding this matter, this information is subject to the terms of that agreement. ©2024. Jones Lang LaSalle IP, Inc. All rights reserved.