



WATERFRONT RETREAT

WATER AND STONE

3083 CHICAGO CREEK ROAD, IDAHO SPRINGS, CO 80452

Kris Manthos

Broker Associate
512.595.1864
Kris@ColoradoCommercialAdvisors.com

Jason Parker

Partner / Managing Broker
303.877.8329
Jason@ColoradoCommercialAdvisors.com

Colorado Commercial Advisors

29029 Upper Bear Creek Road, Ste 200A
ColoradoCommercialAdvisors.com

TABLE OF CONTENTS

PROPERTY SUMMARY	3
PROPERTY DESCRIPTION	4
COMPLETE HIGHLIGHTS	5
UNIT MIX AND LODGING OVERVIEW	6
INTERIOR PHOTOS	7
INTERIOR PHOTOS	8
EXTERIOR PHOTOS	9
VALUE-ADD OPPORTUNITIES	10
IDAHO SPRINGS	11
SEASONAL RECREATION	12
AREA ATTRACTIONS	13
RECREATION & ATTRACTION PHOTOS	14
REGIONAL MAP	15
AERIAL MAP	16
SITE MAP	17

CONFIDENTIALITY & DISCLAIMER

All materials and information received or derived from Colorado Commercial Advisors, LLC its directors, officers, agents, advisors, affiliates and/or any third party sources are provided without representation or warranty as to completeness, veracity, or accuracy, condition of the property, compliance or lack of compliance with applicable governmental requirements, developability or suitability, financial performance of the property, projected financial performance of the property for any party's intended use or any and all other matters.

Neither Colorado Commercial Advisors, LLC its directors, officers, agents, advisors, or affiliates makes any representation or warranty, express or implied, as to accuracy or completeness of the any materials or information provided, derived, or received. Materials and information from any source, whether written or verbal, that may be furnished for review are not a substitute for a party's active conduct of its own due diligence to determine these and other matters of significance to such party. Colorado Commercial Advisors, LLC will not investigate or verify any such matters or conduct due diligence for a party unless otherwise agreed in writing.

EACH PARTY SHALL CONDUCT ITS OWN INDEPENDENT INVESTIGATION AND DUE DILIGENCE.

Any party contemplating or under contract or in escrow for a transaction is urged to verify all information and to conduct their own inspections and investigations including through appropriate third party independent professionals selected by such party. All financial data should be verified by the party including by obtaining and reading applicable documents and reports and consulting appropriate independent professionals. Colorado Commercial Advisors, LLC makes no warranties and/or representations regarding the veracity, completeness, or relevance of any financial data or assumptions. Colorado Commercial Advisors, LLC does not serve as a financial advisor to any party regarding any proposed transaction. All data and assumptions regarding financial performance, including that used for financial modeling purposes, may differ from actual data or performance. Any estimates of market rents and/or projected rents that may be provided to a party do not necessarily mean that rents can be established at or increased to that level. Parties must evaluate any applicable contractual and governmental limitations as well as market conditions, vacancy factors and other issues in order to determine rents from or for the property.

Legal questions should be discussed by the party with an attorney. Tax questions should be discussed by the party with a certified public accountant or tax attorney. Title questions should be discussed by the party with a title officer or attorney. Questions regarding the condition of the property and whether the property complies with applicable governmental requirements should be discussed by the party with appropriate engineers, architects, contractors, other consultants and governmental agencies. All properties and services are marketed by Colorado Commercial Advisors, LLC in compliance with all applicable fair housing and equal opportunity laws.

Kris Mantos

Broker Associate

512.595.1864

Kris@ColoradoCommercialAdvisors.com

Jason Parker

Partner / Managing Broker

303.877.8329

Jason@ColoradoCommercialAdvisors.com

Colorado Commercial Advisors

29029 Upper Bear Creek Road, Ste 200A

ColoradoCommercialAdvisors.com

PROPERTY SUMMARY

- 14-key boutique hospitality property: 9 cabins + 5 condo units
- \$435,860 NOI | 6.7% cap rate at \$6,495,000
- 4.91-star Airbnb rating | 90-95% peak season occupancy
- ±5.16 acres along year-round Chicago Creek frontage
- Direct adjacency and access to ±15,000 acres of US Forest Service land
- C-3 commercial zoning- no STR licensing
- City of Idaho Springs municipal water & sewer- 13 of 14 units
- Newly installed 8" commercial municipal sewer line – majority of units connected
- Expansion Potential approved for hotel/lodge development
- Room to add additional cabins/specialty lodging
- Airbnb-exclusive, VRBOm direct booking, and group sales untapped
- Established wedding and event demand in immediate corridor
- Argo Gondola opening May 2026- 500,000-700,000 projected annual visitors
- Trained staff in place | third-party guest communications | semi-passive operation
- ±30 minutes to Denver | Gateway to I-70 ski corridor
- Stable occupancy and High ADRs
- Minimal competition: Lack of lodging options in the area
- Financials and further detail provided with NDA



OFFERING SUMMARY

Sale Price:	\$6,495,000
NOI:	\$435,860
Lot Size:	5.16 AC
Keys:	14
Units:	9 Cabins, 5 Condos
Pillows:	34
Zoning:	C-3
Jurisdiction:	City of Idaho Springs

DEMOGRAPHICS

	20 MILES	50 MILES	100 MILES
Total Households	39,774	1,381,537	2,007,492
Total Population	94,172	3,418,809	5,031,590
Average HH Income	\$162,654	\$136,234	\$130,100

RETREAT INFO:

Website	www.waterandstoneretreat.com
---------	--

Kris Mantos

Broker Associate
512.595.1864

Kris@ColoradoCommercialAdvisors.com

Jason Parker

Partner / Managing Broker
303.877.8329

Jason@ColoradoCommercialAdvisors.com

Colorado Commercial Advisors

29029 Upper Bear Creek Road, Ste 200A
ColoradoCommercialAdvisors.com



PROPERTY DESCRIPTION

A rare opportunity to acquire an established, income-producing 14-key mountain hospitality asset in one of Colorado's most active year-round tourism corridors – just 30 minutes from Denver.

Situated on ±5.16 acres along Chicago Creek with direct National Forest adjacency on multiple borders, Water & Stone Cabins combines proven operational performance with an infrastructure foundation that is genuinely uncommon in the mountain market. The property carries C-3 commercial zoning – no STR restrictions, no annual licensing, no regulatory exposure – along with city water service and a recently installed 8" commercial municipal sewer line connecting the majority of units to city sewer. These are not features you can replicate on another parcel in Idaho Springs.

The property generates \$435,860 in trailing EBITDA across 14 units – 9 cabins and 5 condo-style units – and carries a 4.91-star Airbnb rating built over hundreds of verified stays. Peak season occupancy runs 90-95%. Units are currently listed exclusively on Airbnb, leaving meaningful upside through additional booking channels, direct reservations, and amenity enhancements.

The location sits at the eastern gateway to Colorado's I-70 ski corridor, with Arapahoe Basin and Loveland minutes up the road and Copper Mountain, Keystone, and Breckenridge all within an hour. In summer, Chicago Creek – which runs through the property – feeds directly into Clear Creek, one of Colorado's premier whitewater corridors. The corridor also benefits from established wedding and event demand with limited quality lodging inventory to absorb group stays – a structural gap that represents immediate, actionable revenue opportunity for a new operator.

The Argo Gondola opens in May 2026 – and it changes the calculus entirely. Projected to draw 500,000-700,000 visitors annually, it converts Idaho Springs from a highway exit into a genuine year-round destination. The property is four minutes from the gondola base. This is the most significant demand catalyst in the history of Idaho Springs tourism. A buyer who moves quickly acquires at today's pricing – before 500,000 additional annual visitors are reflected in the market.

Approved for hotel and lodge development. Turnkey operation with trained staff in place.

Kris Manthos

Broker Associate
512.595.1864
Kris@ColoradoCommercialAdvisors.com

Jason Parker

Partner / Managing Broker
303.877.8329
Jason@ColoradoCommercialAdvisors.com

Colorado Commercial Advisors

29029 Upper Bear Creek Road, Ste 200A
ColoradoCommercialAdvisors.com





WHY THIS RETREAT

- Established Income-Producing Asset:** \$435,860 trailing EBITDA across 14 keys – 9 cabins and 5 condo units – with 90-95% peak season occupancy and a 4.91-star Airbnb rating representing hundreds of verified stays.
- Year-Round Live Water Amenity:** The property sits along Chicago Creek – a defining guest experience feature that drives premium nightly rates, repeat bookings, and a competitive differentiation that no interior mountain property can match.
- Rare C-3 Commercial Zoning:** Commercially zoned hospitality operation – no STR licensing, no annual renewal risk, no regulatory exposure to the wave of short-term rental restrictions moving through Colorado mountain communities.
- City Water and Municipal Sewer Infrastructure:** Most units on city water service. The majority of the property has been upgraded to municipal sewer via a newly installed commercial sewer line – a rare and capital-intensive improvement that supports reliability, lender comfort, and future development capacity.
- Mountain Views & Direct National Forest Adjacency:** Borders approximately 15,000 acres of protected US Forest Service land, providing permanent privacy, recreational access, and long-term value protection that cannot be developed away.
- Built-In Event and Wedding Demand:** The immediate corridor serves established destination wedding and event activity, with limited quality lodging inventory to absorb group stays. This structural gap represents an immediate, actionable revenue opportunity for an attentive operator.
- Approved Expansion Capacity:** The property has received preliminary approval for hotel and lodge development. C-3 zoning, city sewer capacity, and identified development areas support additional cabins, glamping, or signature unit construction with lower entitlement risk than any comparable mountain parcel.
- Argo Gondola:** The long-awaited Argo Gondola in downtown Idaho Springs, projected to draw 500,000-700,000 annual visitors upon completion (May 2026). Water & Stone is positioned to capture this demand before it is fully priced into the market.
- Meaningful Revenue Upside** – Currently listed exclusively on Airbnb. Expansion to VRBO, direct booking, and retreat/group programming represents an estimated 15-25% revenue uplift with no capital expenditure required.
- Turnkey Operation:** Trained staff in place and expected to continue. Guest communications handled by a third-party vendor.
- Preliminary Financing Available:** The asset has been reviewed by a regional lender. Preliminary financing terms may be available to qualified buyers, subject to full underwriting and lender approval.

Kris Manthos

Broker Associate
512.595.1864
Kris@ColoradoCommercialAdvisors.com

Jason Parker

Partner / Managing Broker
303.877.8329
Jason@ColoradoCommercialAdvisors.com

Colorado Commercial Advisors

29029 Upper Bear Creek Road, Ste 200A
ColoradoCommercialAdvisors.com



UNIT DETAILS:

UNIT NAME	TYPE	ADDRESS	CONFIGURATION	GUESTS	~SF	RATE RANGE	CONDITION
Feldspar	Cabin	3111	Studio, Queen	2	350	\$250-\$400	Renovated
Flint	Cabin	3083	1 BR, Queen	2	500	\$250-\$475	Renovated
Rustic Funk	Cabin	3129	Studio, Full	2	350	\$195-\$300	Original
Epiphany Pines	Cabin	3193	1 BR, Full	2	475	\$185-\$300	Original
Solace	Cabin	3207	1 BR, Full	2	475	\$185-\$300	Original
Sweet Pine	Cabin	3229	1 BR, Queen	2	575	\$200-\$350	Original
Shale	Cabin	3255	1 BR + Loft, 2 Queens	4	700	\$250-\$500	Renovated
Countryrock	Cabin	3259	1BR + Bunks, King 2 Single	4	600	\$215-\$300	Renovated
Pebble	Cabin	3261	Studio, Queen	2	300	\$115-200	Renovated
Lodge Keystone	Condo	3303	2 BR	4	1,100	\$250-\$350	Original
Lodge Sandstone	Condo	3303	1 BR, Queen	2	900	\$175-\$275	Renovated
Lodge Cobblestone	Condo	3303	Studio, King	2	315	\$175-\$275	Renovated
Lodge Flagstone	Condo	3303	1 BR, Queen	2	900	\$175-\$300	Renovated
Lodge Moonstone	Condo	3303	1 BR, King	2	800	\$175-\$285	Renovated
Office and Garage	Admin	3303	N/A	N/A		N/A	Original

Kris Mantos

Broker Associate
512.595.1864
Kris@ColoradoCommercialAdvisors.com

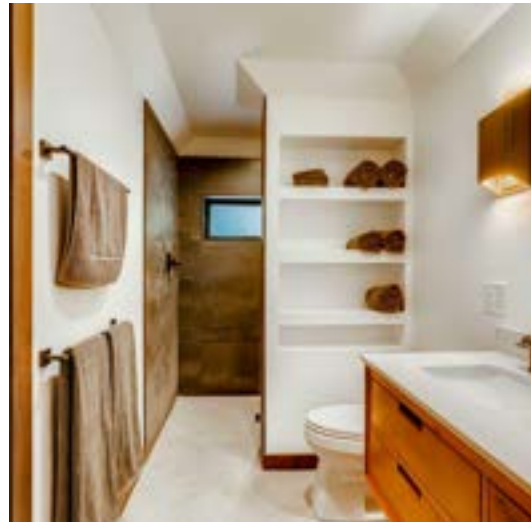
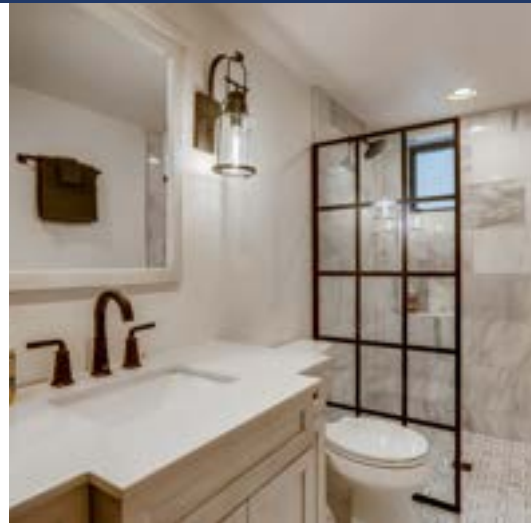
Jason Parker

Partner / Managing Broker
303.877.8329
Jason@ColoradoCommercialAdvisors.com

Colorado Commercial Advisors

29029 Upper Bear Creek Road, Ste 200A
ColoradoCommercialAdvisors.com





Kris Mantos

Broker Associate
512.595.1864
Kris@ColoradoCommercialAdvisors.com

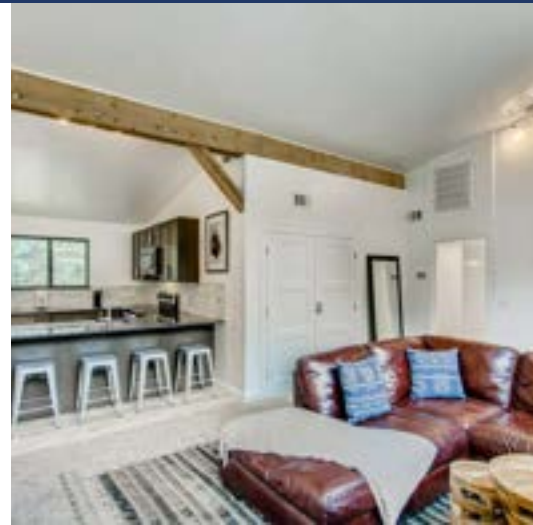
Jason Parker

Partner / Managing Broker
303.877.8329
Jason@ColoradoCommercialAdvisors.com

Colorado Commercial Advisors

29029 Upper Bear Creek Road, Ste 200A
ColoradoCommercialAdvisors.com





Kris Mantos

Broker Associate
512.595.1864
Kris@ColoradoCommercialAdvisors.com

Jason Parker

Partner / Managing Broker
303.877.8329
Jason@ColoradoCommercialAdvisors.com

Colorado Commercial Advisors

29029 Upper Bear Creek Road, Ste 200A
ColoradoCommercialAdvisors.com





Kris Mantos

Broker Associate
512.595.1864
Kris@ColoradoCommercialAdvisors.com

Jason Parker

Partner / Managing Broker
303.877.8329
Jason@ColoradoCommercialAdvisors.com

Colorado Commercial Advisors

29029 Upper Bear Creek Road, Ste 200A
ColoradoCommercialAdvisors.com



OPPORTUNITIES TO ENHANCE VALUE

- **Amenity Enhancements:** Private/Shared hot tubs, Sauna, Cold Plunge, Outdoor fire pits/seating areas, covered pavilion/communal space, outdoor lighting and landscaping enhancements.
- **Additional Lodging Units:** Develop additional cabins on excess land, introduce glamping units, Yurts, Mountainside Sky Lodges, or other alternative lodging, add extended-stay or premium units, reconfigure or optimize existing structures.
- **Event and Group Revenue:** Referral lodging with nearby wedding venues. Host elopements, private events, corporate retreats and team offsites, wellness retreats, workshops, and group bookings.
- **Revenue Management Optimization:** Implement dynamic pricing strategies, improve weekend and holiday rate capture and optimize minimum stay requirements.
- **Direct booking & Marketing :** Increase direct booking share vs OTA platforms, Improve SEO and digital presence, build email list and repeat guest marketing.
- **Unit Upgrades & Premium Positioning:** Renovate remaining interiors to premium/boutique standard, introduce themed or experiential lodging concepts.
- **Experiential Packages and Guided Adventure Partnerships:** Guided Fly Fishing Excursions, Hiking and Alpine Tours, Survival Skills, Mountain Biking experiences, Fall foliage viewing, Ski and Snowshoe packages, Massage and wellness offerings, and Partnerships with local outfitters and guides. Impact: higher ADR
- **Guest experience and ancillary revenue:** Welcome packages and in room add-ons such as champagne, charcuterie boards, Bloody Mary kit, s'mores and outdoor adventure kits and onsite food and beverage concepts such as coffee, breakfast, or snacks.
- **Infrastructure & Expansion:** Leverage existing commercial zoning for expanded uses, leverage municipal utilities and sewer for increased density.



Kris Mantos

Broker Associate
512.595.1864
Kris@ColoradoCommercialAdvisors.com

Jason Parker

Partner / Managing Broker
303.877.8329
Jason@ColoradoCommercialAdvisors.com

Colorado Commercial Advisors

29029 Upper Bear Creek Road, Ste 200A
ColoradoCommercialAdvisors.com



IDAHO SPRINGS

Idaho Springs sits at the eastern gateway to Colorado's I-70 ski corridor – and Water & Stone Cabins is the best-positioned lodging asset to capture it.

Thirty minutes from Denver and with direct I-70 access, the property puts guests closer to more major ski resorts than any comparable lodging asset at this price point. Arapahoe Basin and Loveland are minutes up the road – the terrain of choice for serious Front Range skiers who know how to avoid the crowds. Continue west on I-70 and guests reach Copper Mountain in under 45 minutes, Keystone in roughly 50, and Breckenridge in just over an hour. No other mountain lodging property at this price point offers this range of options from a single address.

When the snow melts, the demand doesn't. Chicago Creek – which runs through the property – feeds directly into Clear Creek, one of Colorado's premier Class III-IV whitewater corridors. Guests wake up to the sound of the same water they can raft that afternoon. The Mount Blue Sky corridor, accessible via the scenic byway originating four minutes from the front door, draws hikers, mountain bikers, and photographers from the entire Front Range – and at 14,271 feet, it's the highest paved road in North America, making it a bucket-list drive for visitors from across the country. St. Mary's Glacier offers year-round snowshoeing and backcountry access just minutes away. The fall foliage season along Chicago Creek is among the most spectacular within 45 minutes of Denver – and chronically undersupplied in terms of quality overnight lodging.

The Argo Gondola opens in May 2026 – and it changes the calculus entirely. Projected to draw 500,000-700,000 visitors annually, it converts Idaho Springs from a highway exit into a genuine year-round destination. The property is four minutes from the gondola base. This is the most significant demand catalyst in the history of Idaho Springs tourism. A buyer who moves quickly acquires at today's pricing – before 500,000 additional annual visitors are reflected in the market.

The corridor also benefits from a well-established destination wedding and event market. The immediate area has hosted high-volume wedding and event activity for over 15 years, generating consistent group lodging demand that the local market has never had adequate quality inventory to absorb. Water & Stone, as the premier lodging property in the immediate corridor, is the natural beneficiary of that overflow – and a new operator with any focus on group sales could formalize what has historically been organic demand. Idaho Springs is not a seasonal market dependent on one activity or one operator. It is a four-season basecamp for the Colorado Rockies, and Water & Stone is the best address in it.

LOCATION DETAILS

County	Clear Creek
--------	-------------

Kris Manthos

Broker Associate
512.595.1864
Kris@ColoradoCommercialAdvisors.com

Jason Parker

Partner / Managing Broker
303.877.8329
Jason@ColoradoCommercialAdvisors.com

Colorado Commercial Advisors

29029 Upper Bear Creek Road, Ste 200A
ColoradoCommercialAdvisors.com





WINTER AND SPRING RECREATION (DEC- MAY)

- Skiing and snowboarding at Loveland, Arapahoe Basin, Copper, Winter Park, or others along the I-70 corridor
- Snowshoeing and Backcountry Skiing
- Winter Hiking and Alpine recreation such as ice climbing or tubing at Echo mountain
- Early-season whitewater rafting or kayaking (Class II-V)
- Visiting Indian Hot Springs
- Scenic drives and day trips
- Hiking and trail access as snow melts



SUMMER RECREATION AND PEAK TOURISM (JUNE- AUG)

- Fly fishing and creekside recreation on Chicago Creek (on-site live water)
- Hiking in Arapaho National Forest and Mount Blue Sky Wilderness
- Access to alpine lakes and high-country trails
- Whitewater rafting on Clear Creek (Class II-IV commercial sections)
- Mountain biking and outdoor recreation
- Camping and regional tourism travel
- Destination weddings and event-related visitation
- Group travel and retreat activity



FALL RECREATION (LATE AUG- NOV)

- Fall foliage tourism and aspen viewing (peak Sept-early Oct)
- Scenic drives via Guanella Pass and the Mount Blue Sky Scenic Byway
- Prime hiking & biking season with cooler temperatures and alpine access
- Wildlife viewing, including elk rutting season (Sept-Oct), moose, mountain goats, and other alpine wildlife in nearby high-country areas.
- Photography tourism and scenic travel
- Retreats, workshops, and group bookings

Kris Manthos

Broker Associate
512.595.1864
Kris@ColoradoCommercialAdvisors.com

Jason Parker

Partner / Managing Broker
303.877.8329
Jason@ColoradoCommercialAdvisors.com

Colorado Commercial Advisors

29029 Upper Bear Creek Road, Ste 200A
ColoradoCommercialAdvisors.com



ALPINE & SCENIC ACCESS

- Strategic along the I-70 corridor, which serves as the primary route from Denver to the western slope, supports consistent pass-through tourism and recreation traffic.
- Proximity to Mt. Blue Sky (formerly Mt. Evans)
- Proximity to Mt. Bierstadt, one of Colorado's most climbed 14'ers
- Access to the Mount Blue Sky Scenic Byway up one of two of Colorado's drivable 14'ers
- Access to high- alpine terrain, hiking, backcountry hiking, and sightseeing tours
- Fall foliage corridors and high-elevation tourism



LOCAL ATTRACTIONS & TOURISM DRIVERS

- Argo, Hidee, & Phoenix Gold Mines
- Argo Mill and Tunnel Gondola (opening May 2026)
- Indian Hot Springs
- Echo Mountain and Loveland Ski Area
- Georgetown Loop Railroad
- Historic downtown Idaho Springs and Georgetown
- Clear Creek Rafting Corridor (Class II-V)
- Local Breweries & Dining Destinations
- St. Mary's Glacier & Guanella Pass



EVENTS & SEASONAL DEMAND

- Idaho Springs 4th of July Celebrations has one of the few remaining mountain fireworks displays along the I-70 corridor.
- Rapid Bluegrass Festival, Glacier Fest
- Georgetown Christmas Market and Santa Express Train
- Triple Bypass Ride is a nationally recognized cycling event
- Seasonal festivals and community Events
- Summer and fall events as regional venues
- Holiday tourism and winter visitation along Colorado's primary I-70 ski corridor
- Weekend and short-term destination travel from Denver metro



Kris Mantos

Broker Associate
512.595.1864
Kris@ColoradoCommercialAdvisors.com

Jason Parker

Partner / Managing Broker
303.877.8329
Jason@ColoradoCommercialAdvisors.com

Colorado Commercial Advisors

29029 Upper Bear Creek Road, Ste 200A
ColoradoCommercialAdvisors.com





Kris Manthos

Broker Associate
512.595.1864
Kris@ColoradoCommercialAdvisors.com

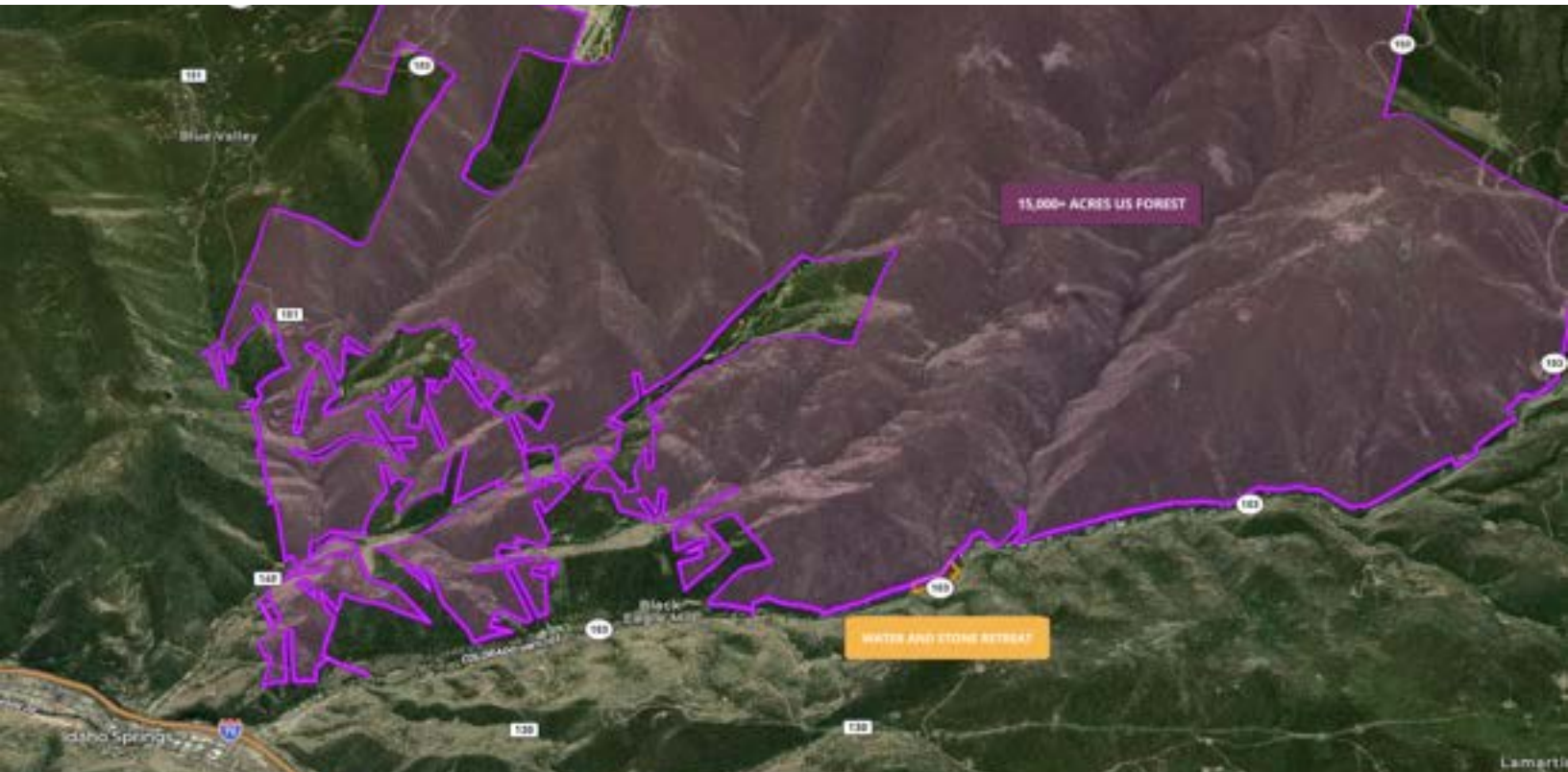
Jason Parker

Partner / Managing Broker
303.877.8329
Jason@ColoradoCommercialAdvisors.com

Colorado Commercial Advisors

29029 Upper Bear Creek Road, Ste 200A
ColoradoCommercialAdvisors.com





Kris Mantos
Broker Associate
512.595.1864
Kris@ColoradoCommercialAdvisors.com

Jason Parker
Partner / Managing Broker
303.877.8329
Jason@ColoradoCommercialAdvisors.com



Colorado Commercial Advisors
29029 Upper Bear Creek Road, Ste 200A
ColoradoCommercialAdvisors.com



Kris Manthos
 Broker Associate
 512.595.1864
 Kris@ColoradoCommercialAdvisors.com

Jason Parker
 Partner / Managing Broker
 303.877.8329
 Jason@ColoradoCommercialAdvisors.com



Colorado Commercial Advisors
 29029 Upper Bear Creek Road, Ste 200A
 ColoradoCommercialAdvisors.com