



PREMIER
COMMERCIAL
PROPERTIES

FOR LEASE



Office Space for Lease

231 Main St. NW, Elk River, MN 55330

AREA AMENITIES

- Elk River Professional Building
- Quality image, beautiful brick exterior
- Nice site line to Main Street, lots of glass
- Downtown location, easy access to Hwy 169
- 2nd floor space of 3,926 SF available
- 9 private offices, conference room, private restroom, break room
- Two story, no elevator, main floor common reception, kitchenette and conference room
- Monument signage available to Main Street
- 30 marked surface stalls
- Adjacent to Fairview Clinic
- Existing office furniture can stay or be removed



PROPERTY DETAILS

Lease Rate: 12.00/RSF
CAM/Taxes: \$7.86/RSF (2025)

FOR MORE INFORMATION, CONTACT

Marty Fisher/Mike Fisher

763-862-2005

mfisher@premiercommercialproperties.com

mikefisher@premiercommercialproperties.com



PREMIER
COMMERCIAL
PROPERTIES

FOR LEASE

CONTACT: Marty Fisher

MOBILE: 612-708-2873

EMAIL: mfisher@premiercommercialproperties.com



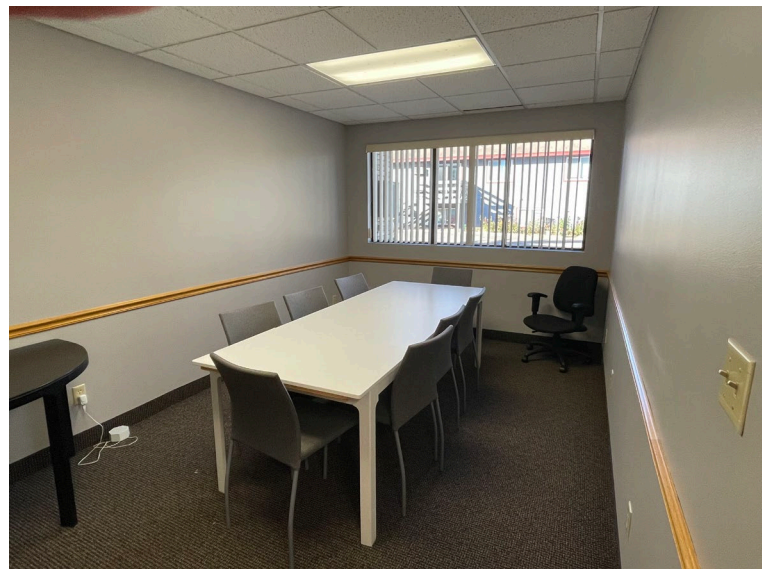
Entry way mail boxes



Common hallway & entrance



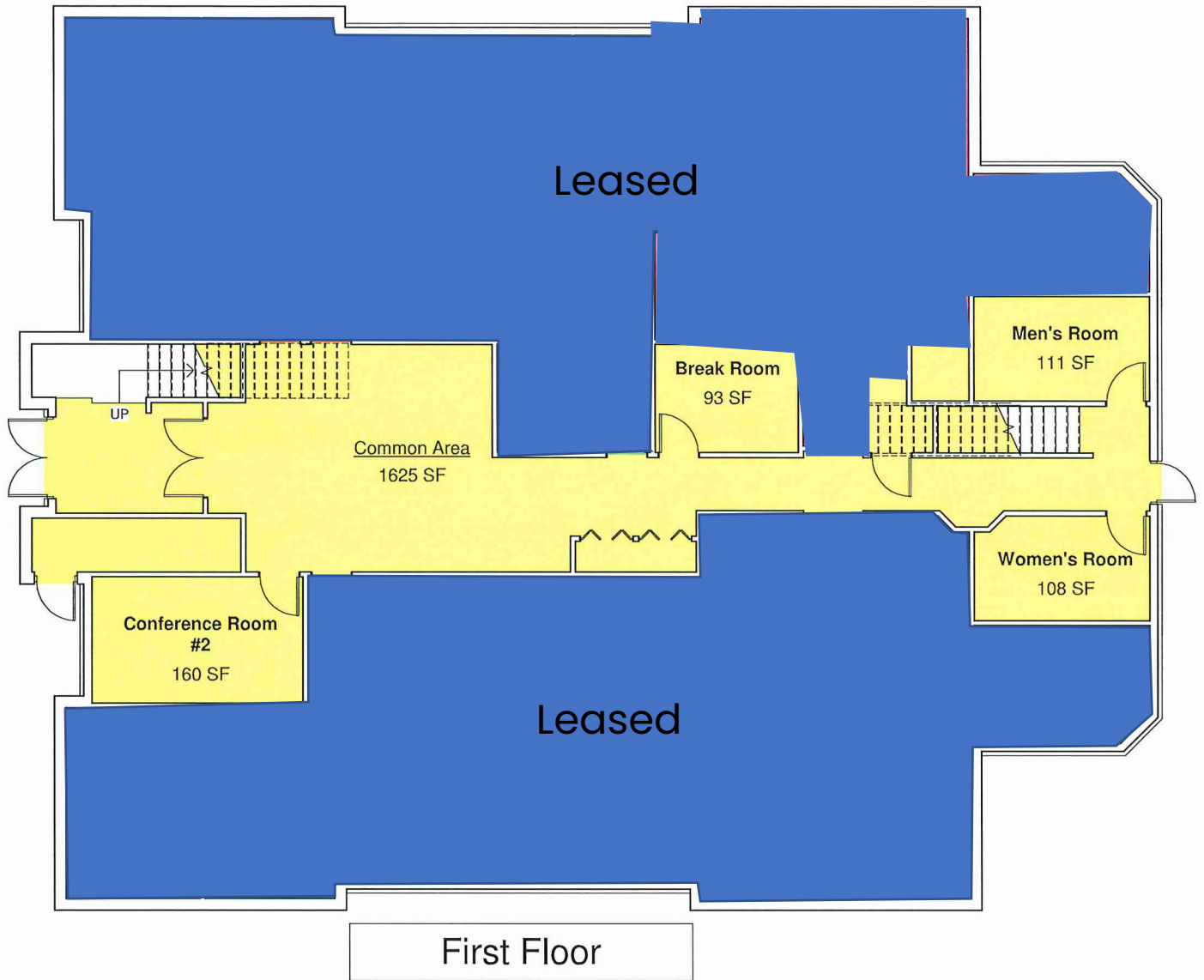
Common break area



Common Conference room
on main floor

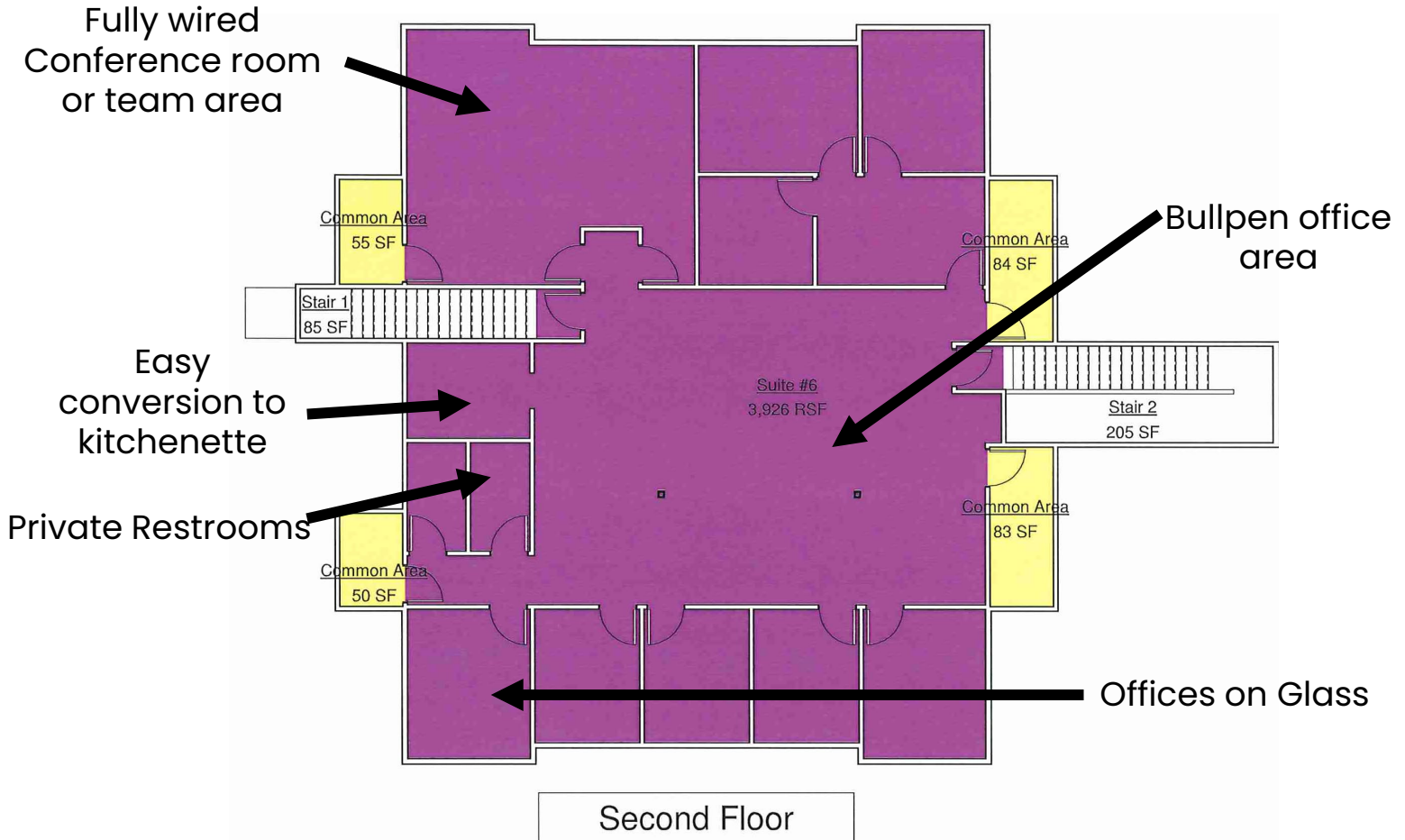


Main Floor – Fully Leased





Second Floor Plan



Second floor buildout, mostly wide open, perimeter offices on glass



PREMIER
COMMERCIAL
PROPERTIES

FOR LEASE

CONTACT: Marty Fisher

MOBILE: 612-708-2873

EMAIL: mfisher@premiercommercialproperties.com



Private offices



Wide open area
Modular furniture can stay or be removed



Private restrooms (2)



Conference room





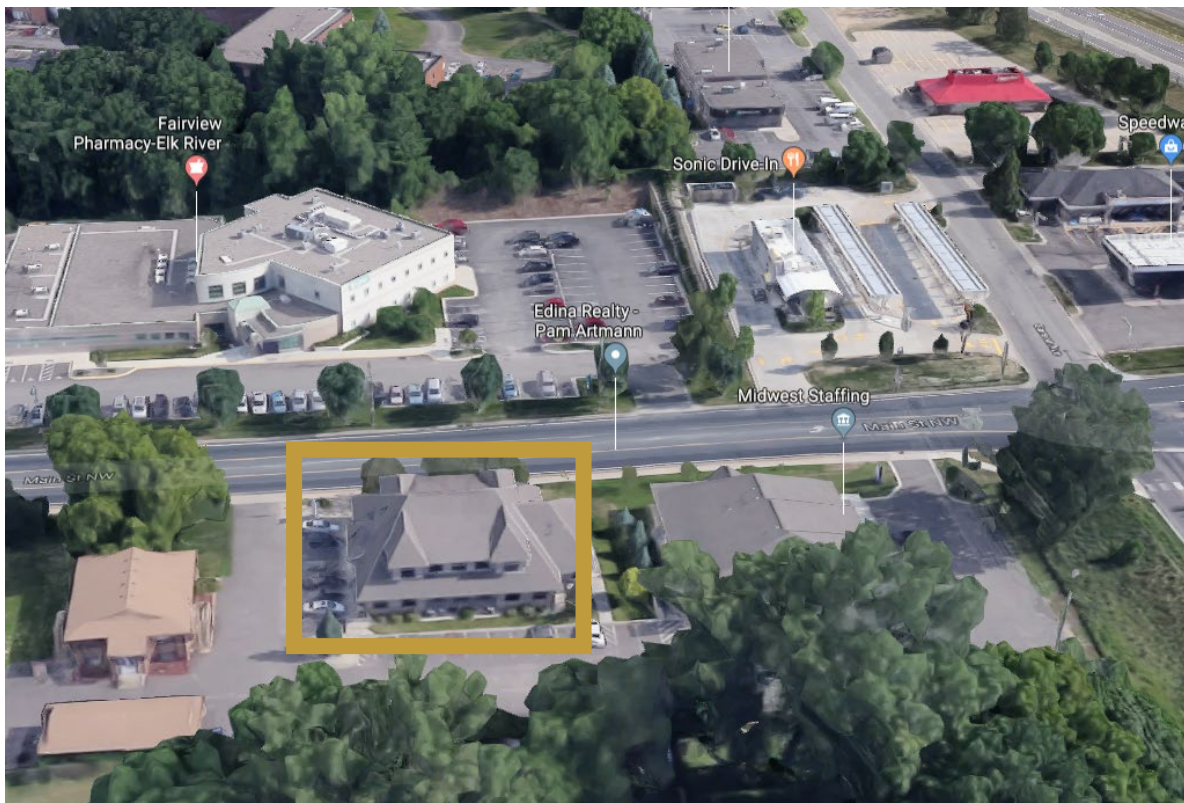
PREMIER
COMMERCIAL
PROPERTIES

FOR LEASE

CONTACT: Marty Fisher

MOBILE: 612-708-2873

EMAIL: mfisher@premiercommercialproperties.com





PREMIER
COMMERCIAL
PROPERTIES

FOR LEASE

CONTACT: Marty Fisher

MOBILE: 612-708-2873

EMAIL: mfisher@premiercommercialproperties.com



Great downtown location with easy access to
Hwy 10 & Hwy 169