

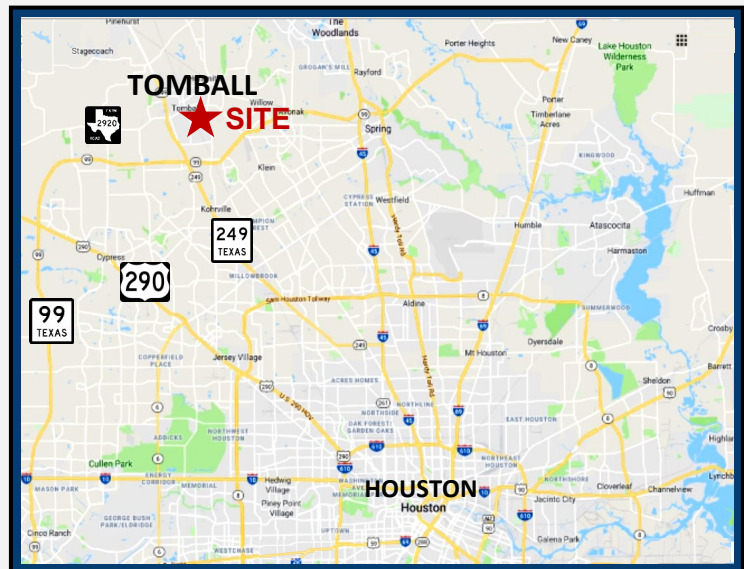
**LAND FOR SALE  
PRIME FOR DEVELOPMENT  
5.21± Acres**

**MEDICAL COMPLEX DRIVE  
TOMBALL, TX 77375**



**PROPERTY  
INFORMATION**

- 5.21± acres on Medical Complex Drive, a 4-lane boulevard serving as a major east-west arterial through the City of Tomball.
  - **Frontage:** 925 ± feet on Medical Complex Drive
  - **Utilities:** Water, sewer & gas available from city of Tomball
  - **Location:** 0.4 mile from Tomball Regional Medical Center, a 150-acre campus, rated top 5% in the U.S. for Women's Health and Emergency Services.
  - **Floodplain:** Not in 100-year floodplain
  - **Zoning:** Currently zoned "Agricultural District"
  - **Future Land Use:** "Neighborhood Commercial"
- List Price: \$1,138,800**



**Evtex Companies**  
11777 Katy Fwy. | Ste. 320-S  
Houston, TX 77079  
713-621-3999

**Contact Broker For More Information:**

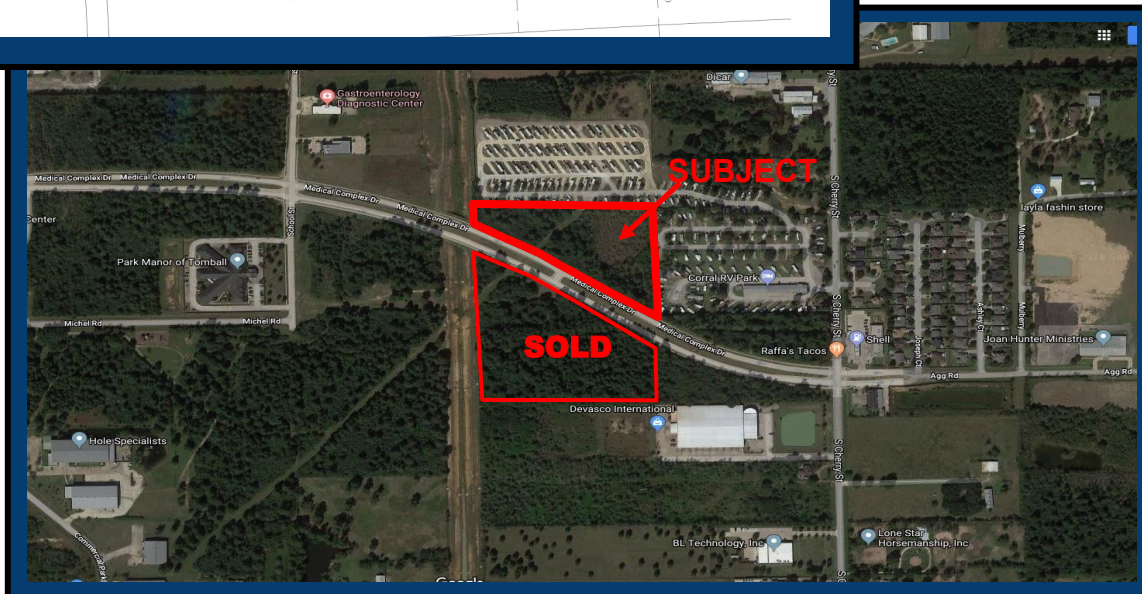
**Janae Evans**  
713-621-3999  
Janae@evtex.com

**Joe Evans**  
281-955-5535  
Joe@evtex.com

The information herein has been obtained from sources believed reliable. While we do not doubt its accuracy, we have not verified it and make no guarantee, warranty or representation about it. It is your responsibility to independently confirm its accuracy and completeness. Any projections, opinion, assumptions or estimates used are for example only and do not represent the current future performance of the property. The value of this transaction to you depends on tax and other factors which should be evaluated by your tax, financial, and legal advisors. You and your advisors should conduct a thorough independent investigation of this property to determine the suitability of the property for your needs.

**LAND FOR SALE  
PRIME FOR DEVELOPMENT  
5.21± Acres**

**MEDICAL COMPLEX DRIVE  
TOMBALL, TX 77375**



**Evtex Companies**  
11777 Katy Fwy. | Ste. 320-S  
Houston, TX 77079  
713-621-3999

**Contact Broker For More Information:**

**Janae Evans**  
713-621-3999  
Janae@evtex.com

**Joe Evans**  
281-955-5535  
Joe@evtex.com

The information herein has been obtained from sources believed reliable. While we do not doubt its accuracy, we have not verified it and make no guarantee, warranty or representation about it. It is your responsibility to independently confirm its accuracy and completeness. Any projections, opinion, assumptions or estimates used are for example only and do not represent the current future performance of the property. The value of this transaction to you depends on tax and other factors which should be evaluated by your tax, financial, and legal advisors. You and your advisors should conduct a thorough independent investigation of this property to determine the suitability of the property for your needs.