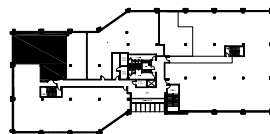
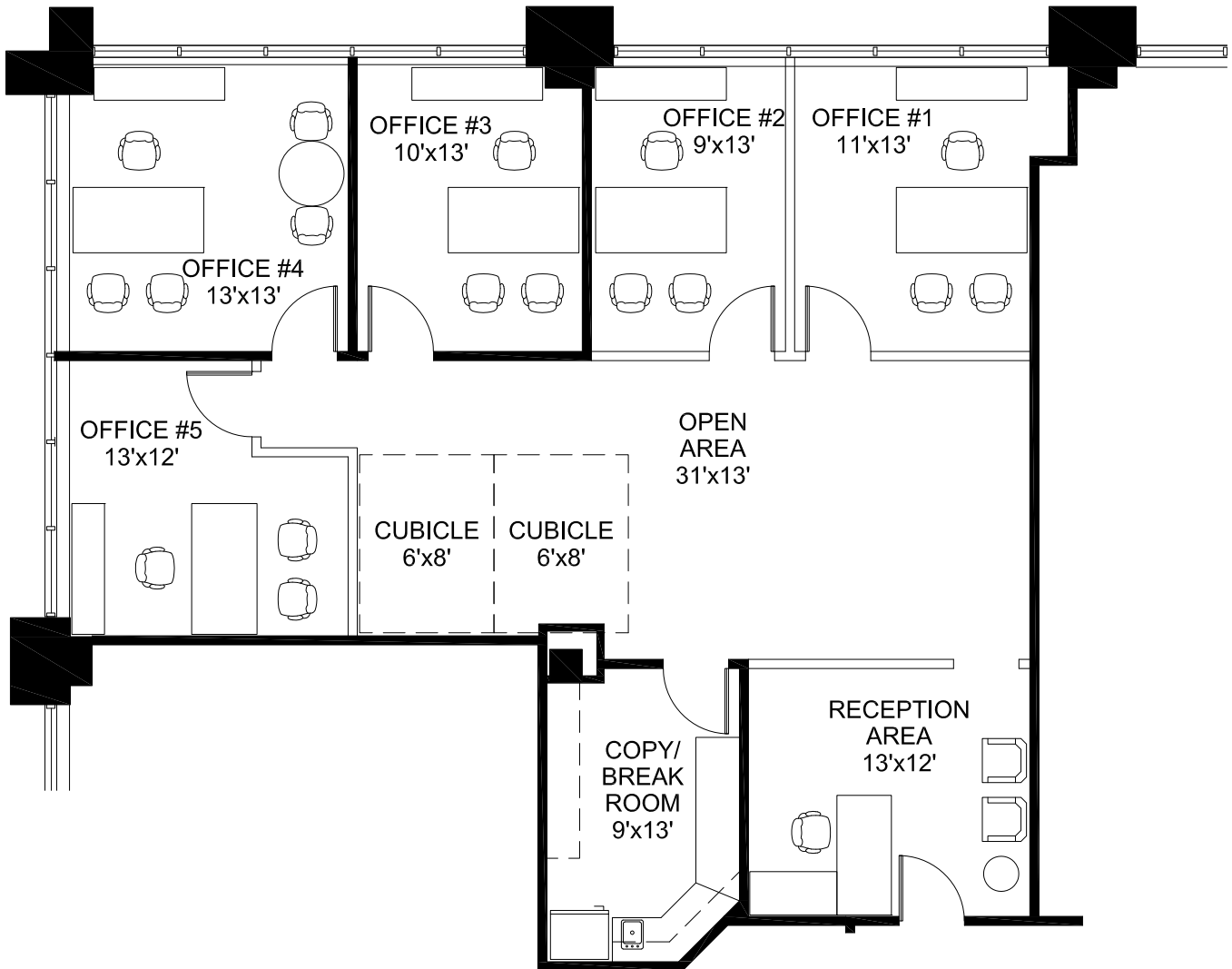


TWIN CENTRAL OFFICE BUILDING

1401 N. Central, Richardson, Texas

SUITE 205 SPECULATIVE SUITE SPACE PLAN 1,794 RSF OPTION "B"



— EXISTING WALLS TO REMAIN
= NEW WALLS

2ND FLOOR

Scale: 1/8"=1'-0"

All dimensions and square footages are approximate.

February 9, 2026