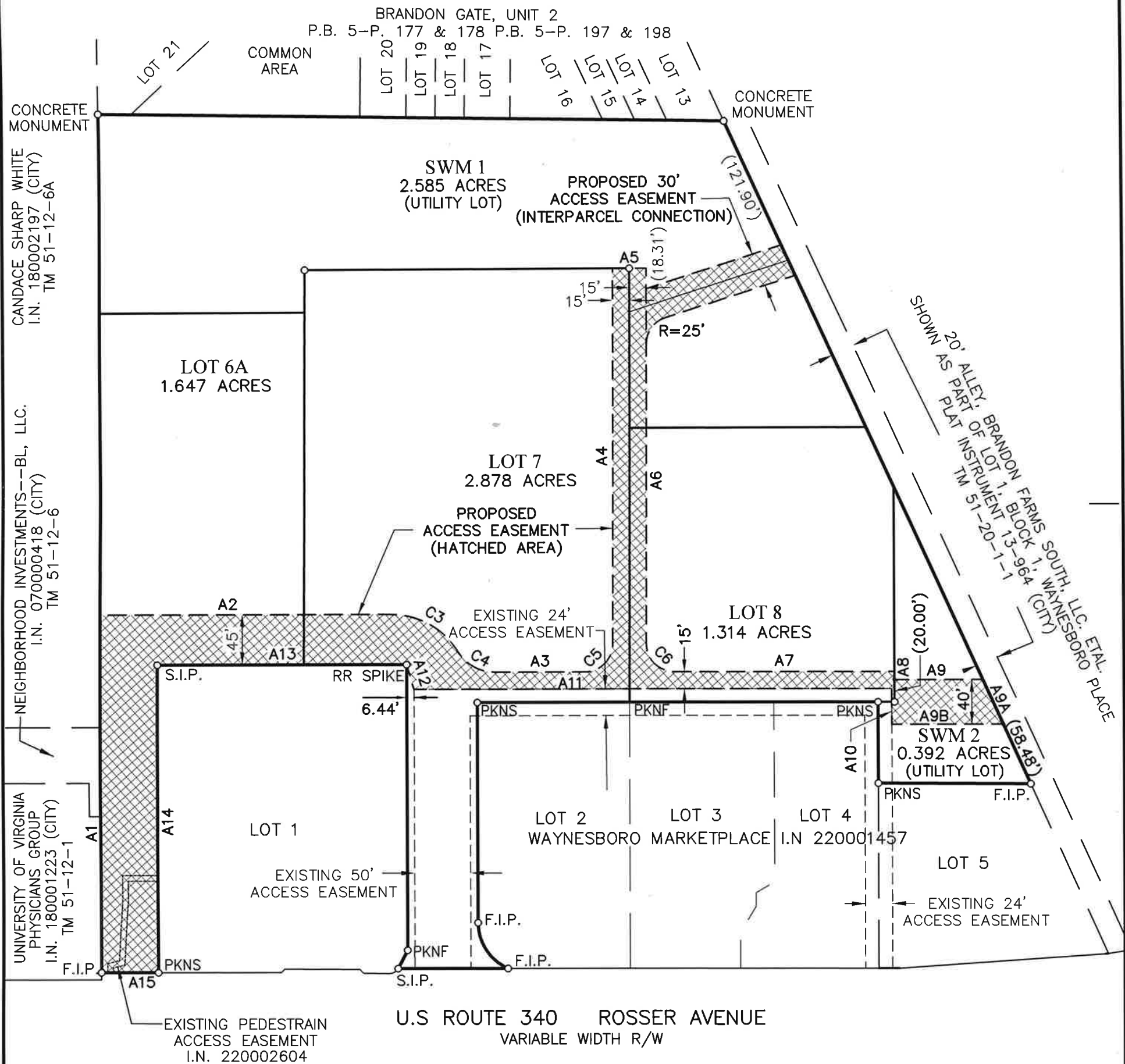




LINE	BEARING	DISTANCE	LINE	BEARING	DISTANCE
A1	S 33°18'28" E	321.40'	A9A	N 57°40'57" W	43.92'
A2	S 56°42'47" W	259.18'	A9B	N 56°42'47" E	98.95'
A3	S 56°42'47" W	80.62'	A10	S 33°17'13" E	32.00'
A4	S 33°00'47" E	337.05'	A11	N 56°42'47" E	426.23'
A5	S 56°59'13" W	30.00'	A12	S 49°21'42" E	23.27'
A6	N 33°00'47" W	336.67'	A13	N 56°42'47" E	221.65'
A7	S 56°42'47" W	195.75'	A14	N 33°17'13" W	276.40'
A8	N 33°18'42" W	7.36'	A15	N 56°42'47" E	50.94'
A9	N 56°42'47" E	78.30'			

CURVE	DELTA	RADIUS	ARC	TAN	CHORD BRG.	CHORD
C3	58°46'07"	69.39'	71.17'	39.07'	S 86°05'50" W	68.09'
C4	58°46'07"	38.61'	39.60'	21.74'	S 86°05'50" W	37.89'
C5	89°43'33"	25.00'	39.15'	24.88'	S 11°51'00" W	35.27'
C6	90°16'27"	25.00'	39.39'	25.12'	N 78°09'00" W	35.44'

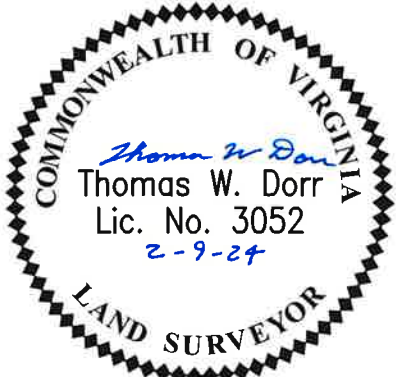
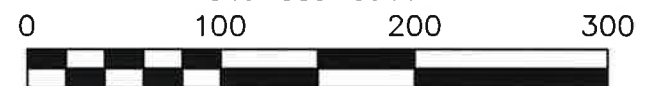


ALL EXISTING EASEMENTS SHOWN HEREON ARE BASED ON THE FINAL PLAT OF WAYNESBORO MARKETPLACE, RECORDED AT I.N. 220001457 AND DECLARATION OF EASEMENTS, COVENANTS, CONDITIONS AND RESTRICTIONS FOR WAYNESBORO MARKETPLACE, I.N. 220001730, UNLESS OTHERWISE NOTED.

FINAL PLAT OF  
**WAYNESBORO MARKETPLACE,**  
**SECTION 2**

CITY OF WAYNESBORO, VA  
 SCALE 1" = 100' NOVEMBER 27, 2023  
 REVISED: FEBRUARY 9, 2024

EGS & ASSOCIATES, INC.  
 15 TERRY ST., STAUNTON, VA  
 540-885-8944



ACCESS EASEMENTS