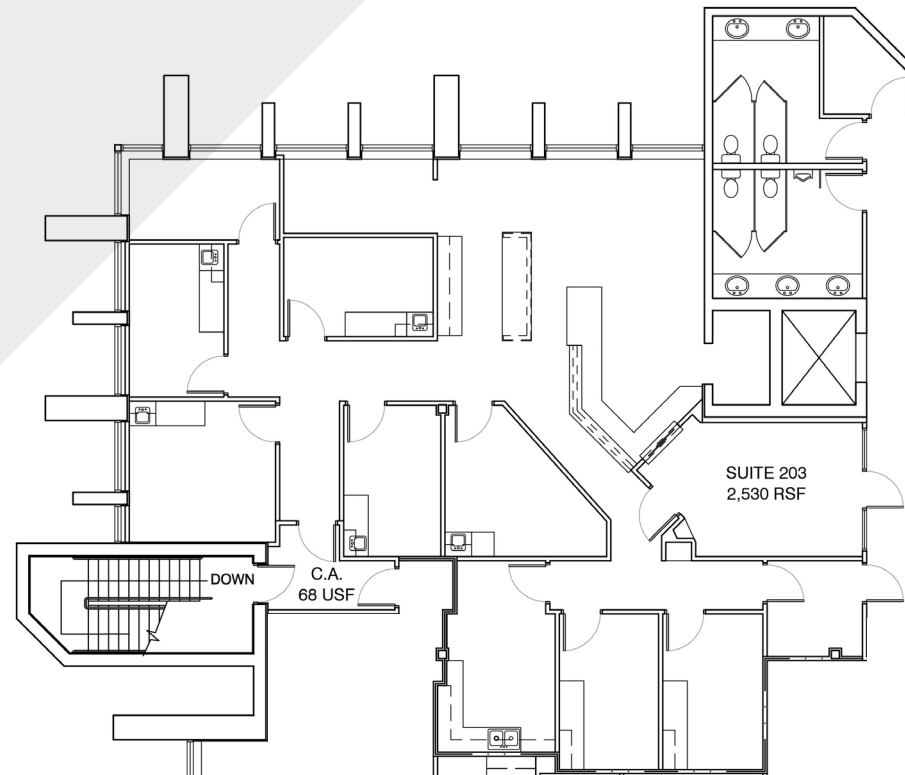


OSBORN HEALTH & WELLNESS BUILDING

AVAILABLE SUITE: SUITE 203

AS BUILT - SUITE 203

2,530 RSF



CONTACT INFO FOR TEAM:

Katie McIntyre

Executive Vice President, Healthcare
T +1 602 282 6357
M +1 602 538 3855
katie.mcintyre@jll.com

Mari Lederman

Executive Vice President, Healthcare
T +1 602 282 6325
M +1 602 705 8870
mari.lederman@jll.com

Max Zemezouak

Senior Associate, Healthcare
M +1 602 920 6744
T +1 480 401 3613
max.zemezouak@jll.com



Although information has been obtained from sources deemed reliable, JLL does not make any guarantees, warranties or representations, express or implied, as to the completeness or accuracy as to the information contained herein. Any projections, opinions, assumptions or estimates used are for example only. There may be differences between projected and actual results, and those differences may be material. JLL does not accept any liability for any loss or damage suffered by any party resulting from reliance on this information. If the recipient of this information has signed a confidentiality agreement with JLL regarding this matter, this information is subject to the terms of that agreement. ©2022. Jones Lang LaSalle IP, Inc. All rights reserved.

**The outbreak of the COVID-19 virus (novel coronavirus) since the end of January 2020 has resulted in market uncertainty and volatility. While the economic impact of a contagion disease generally arises from the uncertainty and loss of consumer confidence, its impact on real estate values is unknown at this stage.