



4% CO-OP BROKER FEE

Available for Lease

SOUTH KANSAS CITY BUSINESS CENTER

400-406 E BANNISTER ROAD (95TH & HOLMES RD), KANSAS CITY, MISSOURI

Property Highlights

- Office, retail and service space available
- Exterior building signage available with visibility to Bannister Rd. (95th St.)
- Abundant surface parking in front and rear of building
- Flexible floor plans, private entries and individually metered utilities
- Located between Holmes Rd. and Wornall Rd. with easy access to I-435
- 1.25 miles from I-435 and 2.5 miles from I-49

Availabilities

- 400 E Bannister Rd
Suite C - E – 4,922 sf
Available 7-1-2026
- 404 E Bannister Rd
Suite D – 1,200 sf
- 406 E Bannister Rd
Suites C – 1,210 sf

For information, please contact:

Thomas Gentry

Director

t 816-268-4249

tgentry@nzimmer.com

nmrkzimmer.com

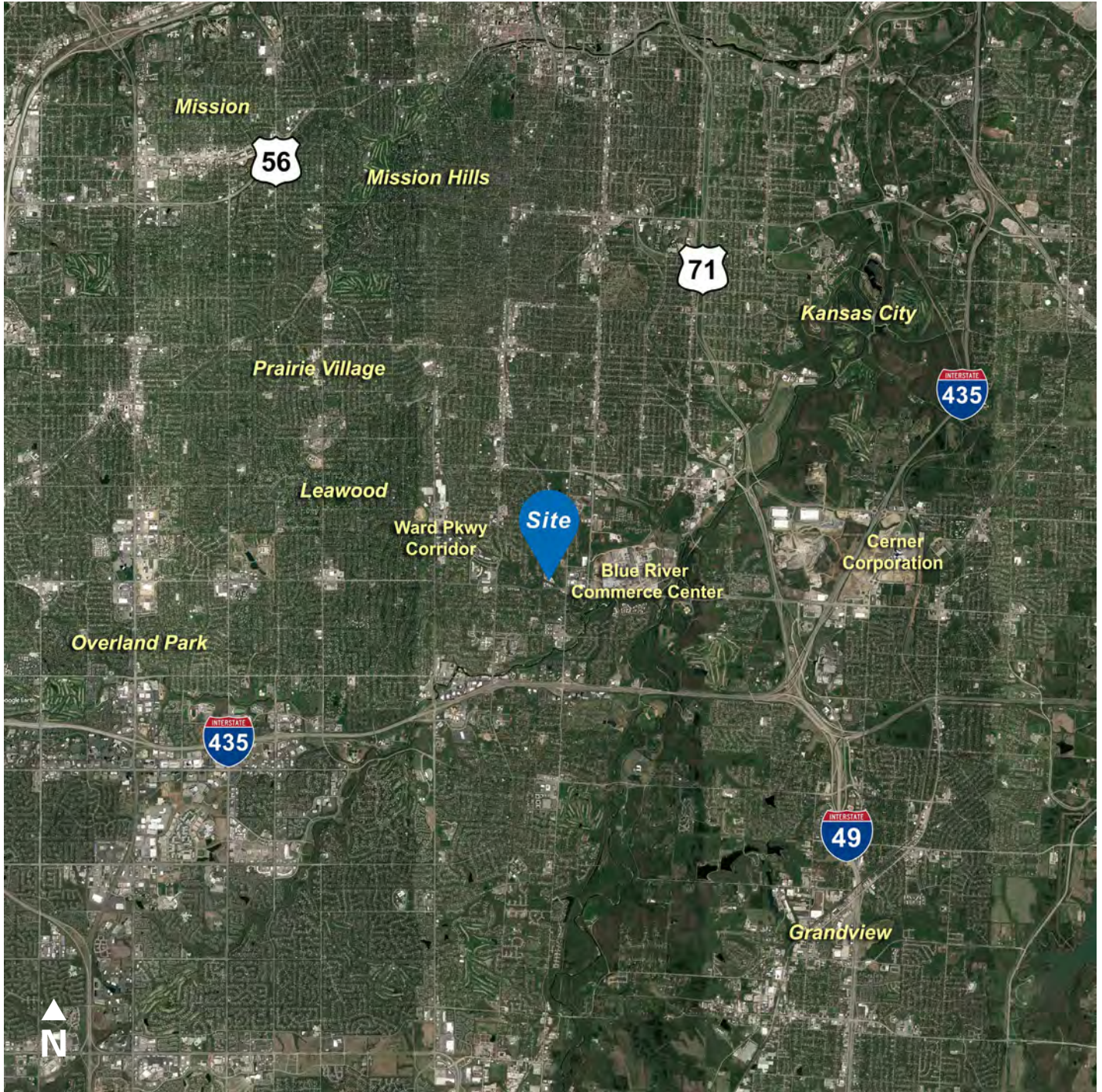
1220 Washington Street, Suite 300
Kansas City, MO 64105

NEWMARK
ZIMMER



The information contained herein has been obtained from sources deemed reliable but has not been verified and no guarantee, warranty or representation, either express or implied, is made with respect to such information. Terms of sale or lease and availability are subject to change or withdrawal without notice.

400-406 E BANNISTER ROAD (95TH STREET) KANSAS CITY, MISSOURI



CONTACT

Thomas Gentry

Director

t 816-268-4249

tgentry@nzimmer.com

nrmrkzimmer.com

400-406 E BANNISTER ROAD (95TH STREET) KANSAS CITY, MISSOURI



CONTACT

Thomas Gentry

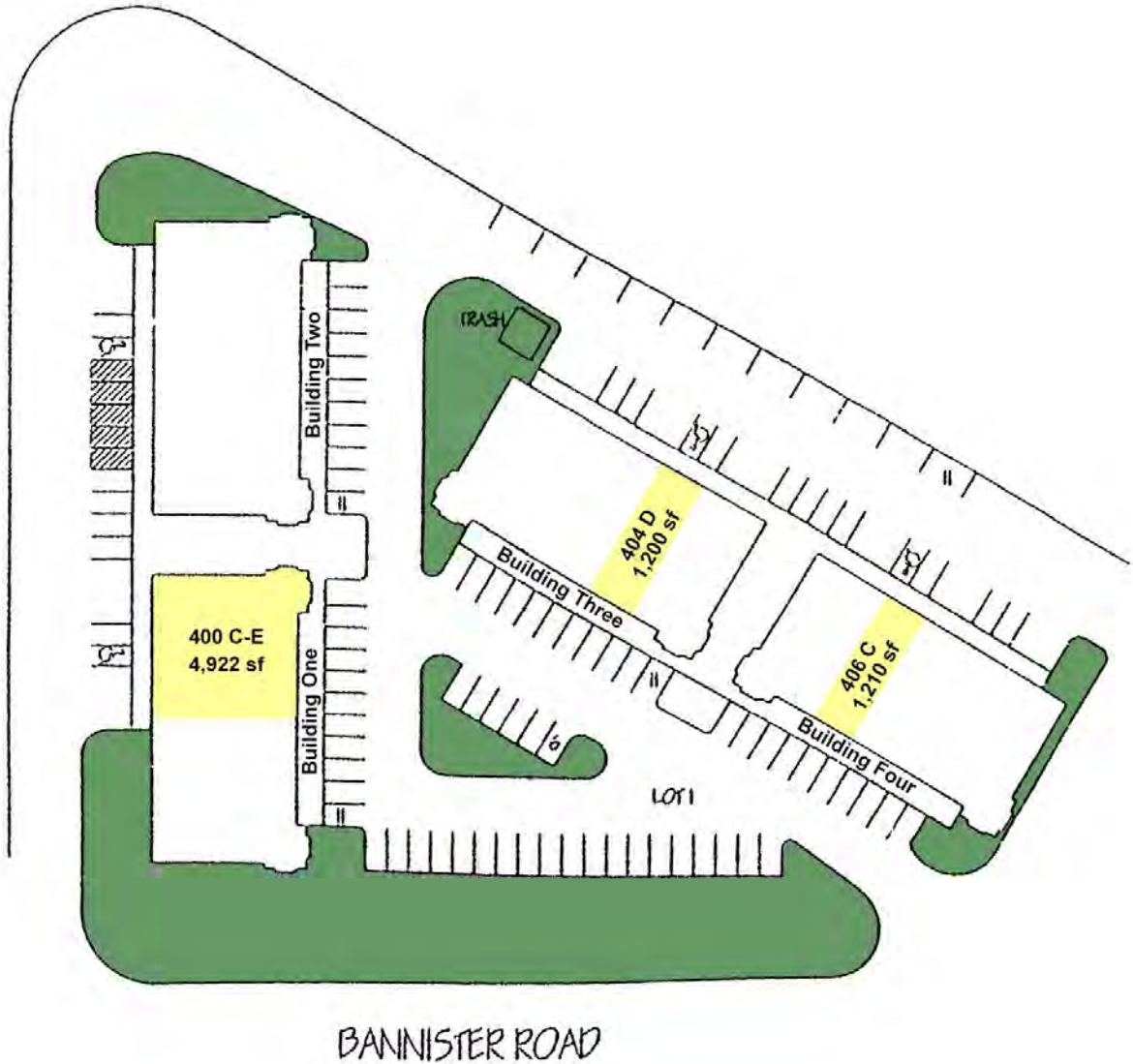
Director

t 816-268-4249

tgentry@nzimmer.com

nmrkzimmer.com

Site Plan



CONTACT

Thomas Gentry

Director

t 816-268-4249

tgentry@nzimmer.com

nmrkzimmer.com

Building 400, Suites C-E Floor Plan



CONTACT

Thomas Gentry

Director

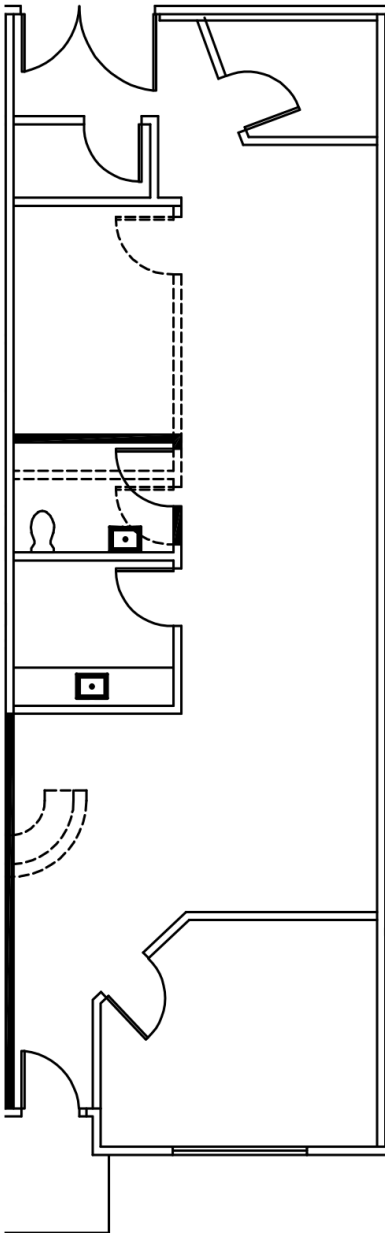
t 816-268-4249

tgentry@nzimmer.com

nmrkzimmer.com

400-406 E BANNISTER ROAD (95TH STREET) KANSAS CITY, MISSOURI

Building 404, Suite D Floor Plan



CONTACT

Thomas Gentry

Director

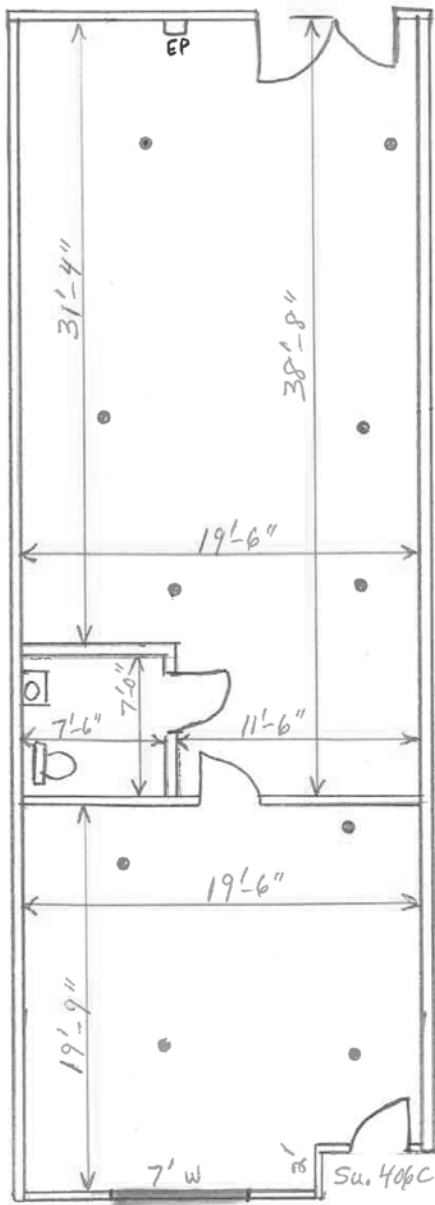
t 816-268-4249

tgentry@nzimmer.com

nmrkzimmer.com

400-406 E BANNISTER ROAD (95TH STREET) KANSAS CITY, MISSOURI

Building 406, Suite C Floor Plan



CONTACT

Thomas Gentry

Director

t 816-268-4249

tgentry@nzimmer.com

nmrkzimmer.com