

FOR LEASE

5,440 SF & 6,524 SF AVAILABLE WAREHOUSE SPACE

1670 & 1676 INDUSTRIAL BLVD, CHULA VISTA, CA 91911



Property Highlights

Wholesale, Industrial and Manufacturing Uses

Dock High Loading & Grade Level Doors

18' to 20' Clear Height

Fire Sprinklers

Building Signage Available

200 Amp/120-208 Volt Power

\$1.65/SF Gross Lease Rate

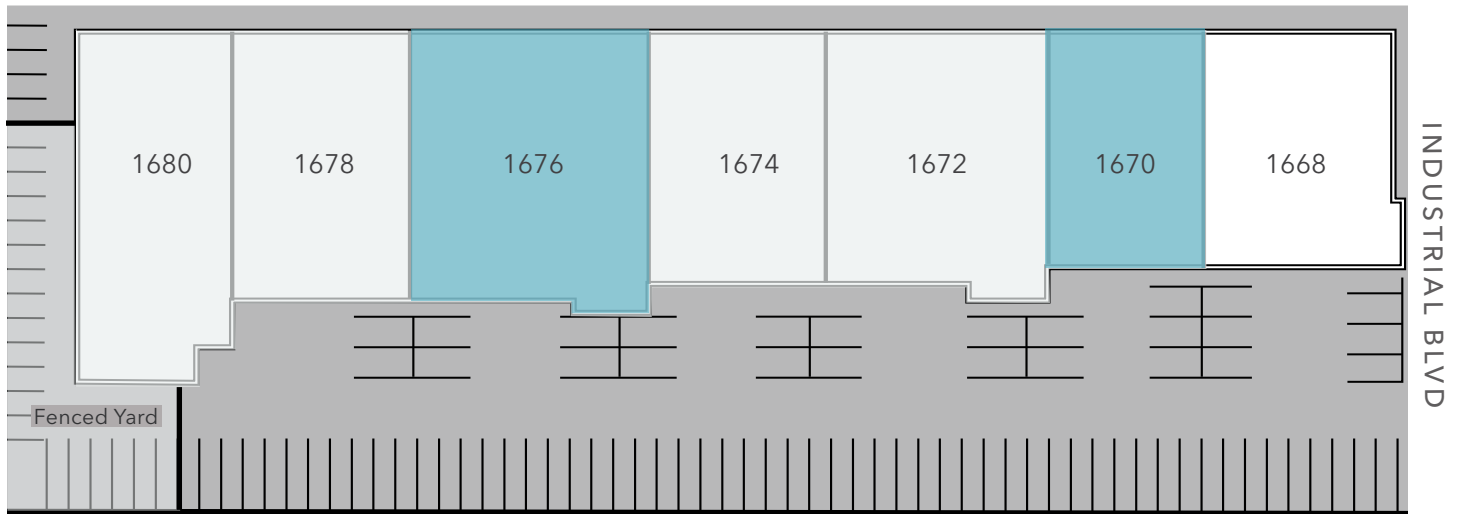
**FOR MORE
INFORMATION
CONTACT**

BRYAN TEEL
858.369.3074
bryan.teel@kidder.com
LIC N° 01464788

KIDDER.COM

This information supplied herein is from sources we deem reliable. It is provided without any representation, warranty, or guarantee, expressed or implied as to its accuracy. Prospective Buyer or Tenant should conduct an independent investigation and verification of all matters deemed to be material, including, but not limited to, statements of income and expenses. Consult your attorney, accountant, or other professional advisor.





LEGEND

- Available
- Leased

AVAILABLE SPACE

Building	Total SF	Lease Rate	Date Available
1670 Industrial Blvd	±5,440 SF	\$1.65 PSF/Gross	July 1, 2026
1676 Industrial Blvd	±6,524 SF	\$1.65 PSF/Gross	July 1, 2026

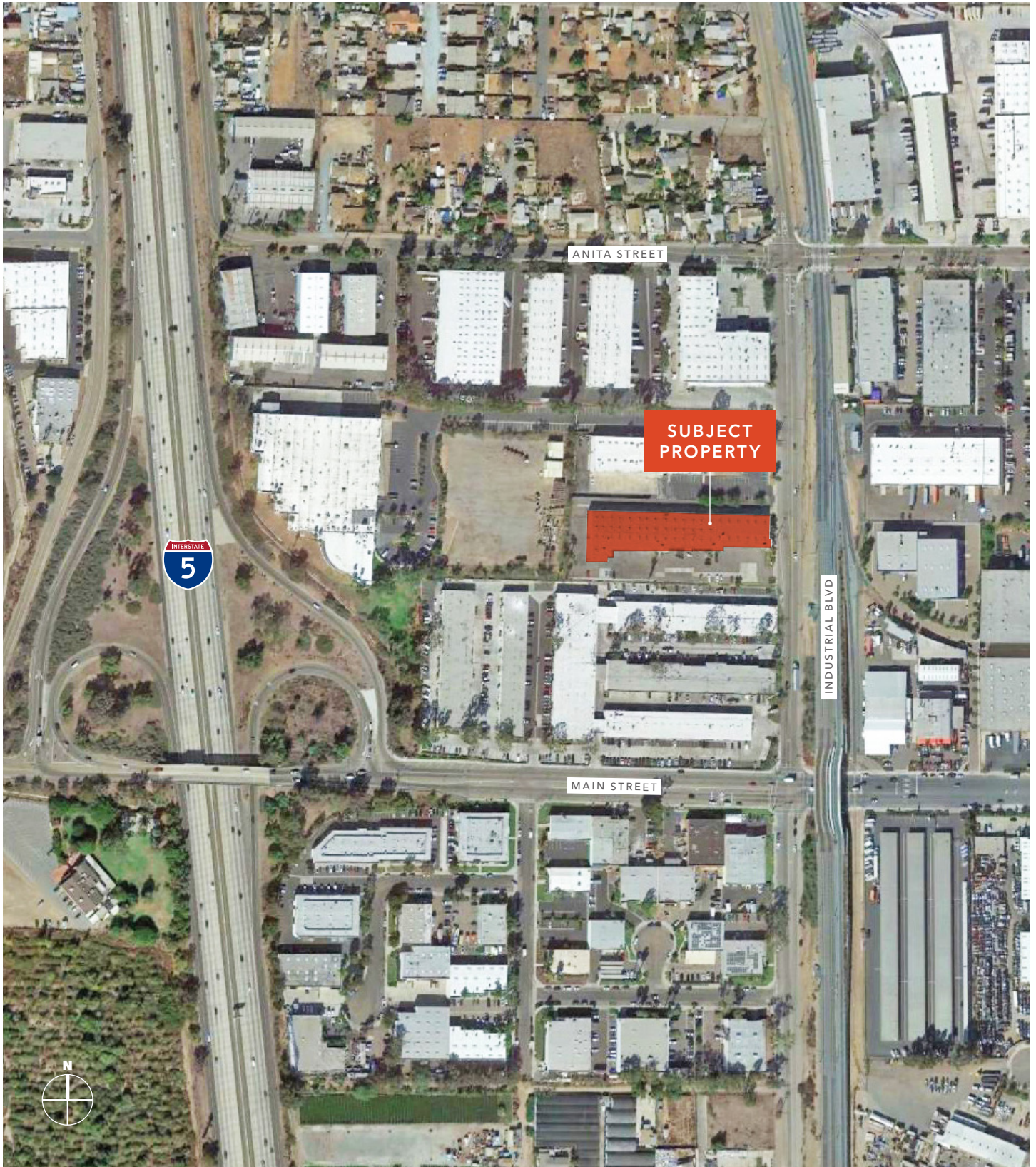
**FOR MORE
INFORMATION
CONTACT**

BRYAN TEEL
858.369.3074
bryan.teel@kidder.com
LIC N° 01464788

KIDDER.COM

This information supplied herein is from sources we deem reliable. It is provided without any representation, warranty, or guarantee, expressed or implied as to its accuracy. Prospective Buyer or Tenant should conduct an independent investigation and verification of all matters deemed to be material, including, but not limited to, statements of income and expenses. Consult your attorney, accountant, or other professional advisor.





KIDDER.COM

This information supplied herein is from sources we deem reliable. It is provided without any representation, warranty, or guarantee, expressed or implied as to its accuracy. Prospective Buyer or Tenant should conduct an independent investigation and verification of all matters deemed to be material, including, but not limited to, statements of income and expenses. Consult your attorney, accountant, or other professional advisor.