

KANSAS COMMERCE CENTER

15325 W. 95TH STREET

LENEXA, KANSAS 66219



KESSINGER HUNTER
commercial real estate

High-End Flex / Medical / Lab for Lease | 2,418± - 6,167± SF

PROPERTY FEATURES

- Adjacent 3,749± SF available
- Excellent access to I-35 & I-435
- 100% office
- Former medical/lab space
- Quality office build-out
- Professional setting
- Call for pricing



For more information, please contact:

MICHAEL WATSON
Principal, Industrial Brokerage
913.940.0223 mobile
mwatson@kessingerhunter.com

ANDY TAYLOR
Principal, Industrial Brokerage
816.812.7676
mwatson@kessingerhunter.com

KESSINGER HUNTER & COMPANY, LC
2600 Grand Boulevard, Suite 700
Kansas City, MO 64108
816.842.2690
www.kessingerhunter.com

Information subject to verification and no liability for errors or omissions is assumed. Price subject to change. Updated 3/11/24.
To unsubscribe, please click on the link: khlistings@kessingerhunter.com

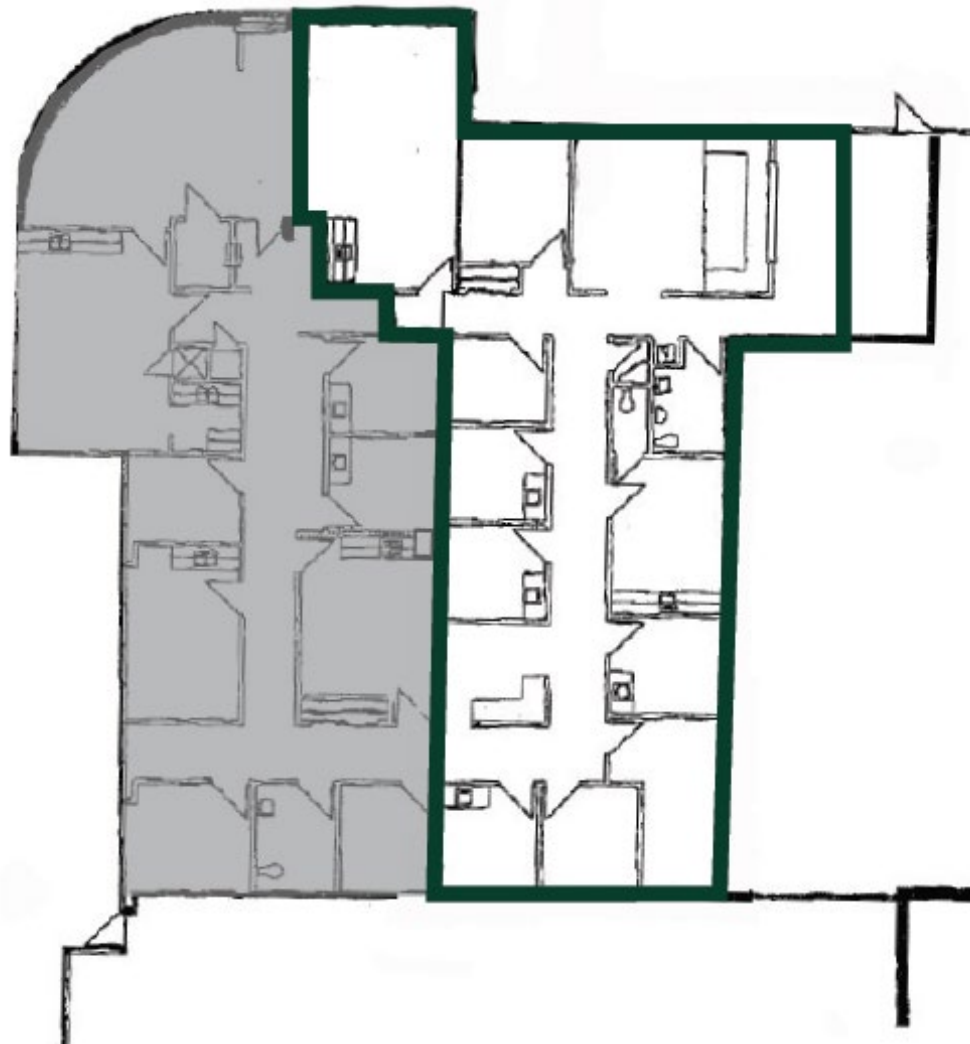
KANSAS COMMERCE CENTER

15325 W. 95TH STREET | LENEXA, KANSAS 66219

High-End Flex / Medical / Lab for Lease | 2,418± SF

est. 1879

KH



For more information, please contact:

MICHAEL WATSON
Principal, Industrial Brokerage
913.940.0223 mobile
mwatson@kessingerhunter.com

ANDY TAYLOR
Principal, Industrial Brokerage
816.812.7676
mwatson@kessingerhunter.com

KESSINGER HUNTER & COMPANY, LC
2600 Grand Boulevard, Suite 700
Kansas City, MO 64108
816.842.2690
www.kessingerhunter.com