



# BC FARM & RANCH REALTY CORP.

## INFORMATION PACKAGE

VIEW ONLINE!



VJUrge[hVWSeVaXXvdl] Y

CJECbWbVa`h[~WbSV-EBDB\_SdeZS^daSVJMF`>CJKKbWbVa`h[~WbSV  
SITafeXadV, BC

**GORD HOUWELING** PREC\*



+604.793.8660  
+1.888.852.AGRI (2474)

[gordhouweling.ca](http://gordhouweling.ca)



[gordhouweling@gmail.com](mailto:gordhouweling@gmail.com)  
[www.bcfarmandranch.com](http://www.bcfarmandranch.com)

[@gordhouweling](https://www.instagram.com/gordhouweling)



Disclaimer: This document has been prepared by BC Farm and Ranch Realty for advertising and general information only. BC Farm and Ranch makes no guarantees or warranties of any kind, expressed or implied regarding the information including, but not limited to, warranties of content, accuracy and reliability. Any interested party should undertake their own inquiries as to the accuracy of the information. BC Farm and Ranch Realty excludes unequivocally all inferred or implied terms, conditions and warranties arising out of this document and excludes all liability for loss and damages arising there from. This communication is not intended to cause or induce breach of an existing agreement.

# FOR LEASE

**225,350 SQ/FT OF GROWING SPACE**

**TRIPLE NET LEASE, 5 YEAR TERM**

**12,500 /mo    150,000 / yr**

***NO COMMERCIAL TRUCK PARKING***



Located only minutes from Highway 1 sits this greenhouse operation ready for your agri-business. With 225,350 square feet of growing space, these facilities have been maintained, updated, and offer ample space. Fully serviced and automated with Argus Environmental Control computer systems. A variety of structures are ready to grow including 66,450 Retractable Roof Cravo Greenhouse, 99,500 sq/ft Cold Frames, 22,900 sq/ft Gutter Connected Greenhouses, 24,800 sq/ft Seasonal Tunnels, and 11,700 sq/ft Shade Structure. Extensive outdoor irrigated growing beds in place and approx. 1 acre of bare land. Also on site is an office space, boardroom, staff lunchroom, and washrooms. Various equipment is available including:

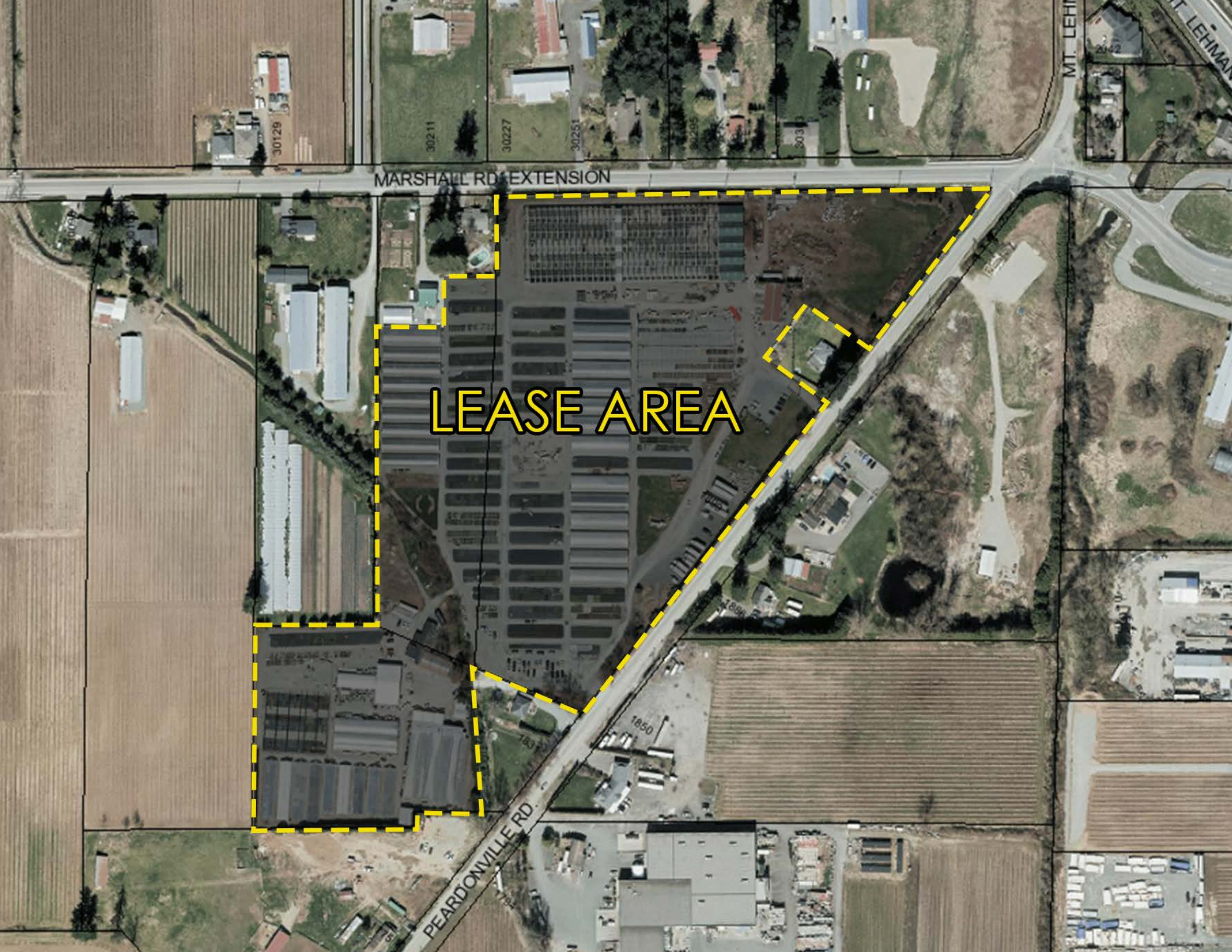
- Soil handling system consisting of augurs, bins and overhead conveyors
- Pot and tray dispenser
- Template Soil Filler
- Dibbler and conveyors
- John Deere Gator with a mounted pesticide sprayer
- Nursery Tracking wagons
- Hydraulic loading dock
- Automatic standby generators (natural gas)
- Powered fuel tanks: Diesel and Gas



# MAP & BUILDING DETAILS



Building	Location on Photo	Size
Retractable Roof greenhouse and Header	1	66,450
Shop and Chemical storage	2	2,356
Seasonal Tunnels	3	24,800
Cold Frames 1899 Peardonville	4	46,800
Cold frames 30220 Marshall	5	28,200
Propagation Greenhouse	6	16,974
Staff lunchroom / storage	7	1,800
Portable Office Assembly	8	2,200
Shipping Structure	9	2,000
Dock Cover (built 2019, not on photo)	9	4,000
Propagation Greenhouse	10	6,000
Cold Frames 1831 Peardonville	11	24,500
Storage Shed	12	600
Shade Structure	13	11700
<b>Total Protected Growing area</b>		
Cold Frames		99500
Gutter Connected Greenhouses		22900
Retractable Roof Cravo Greenhouse		66450
Seasonal Tunnels		0
Shade Structure		11700
	<b>Total</b>	<b>200550</b>



LEASE AREA

MARSHALL RD EXTENSION

PEARDONVILLE RD

MT. LEHMAN

30129

30211

30227

30251

303

1850

183

## GET TO KNOW GORD

**BC FARM & RANCH REALTY IS B.C.'S LEADER IN AGRICULTURAL REAL ESTATE;** offering individuals, families and businesses a competitive edge when purchasing and selling acreage in B.C. Whether you are looking to purchase or sell a small hobby farm, house & acreage or a larger farm, we can provide you with professional assistance every step of the way.

*Gord Houweling is a lifelong resident of British Columbia with strong agriculture roots. He has fond memories of growing up on a dairy farm in Langley and Abbotsford. Together with his wife and kids he owned and operated a dairy farm for over 30 years in Chilliwack. When he became a Realtor in 2001 it was an easy decision to join BC Farm & Ranch Realty because they are BC's leader in Agricultural Real Estate. Since then he has used his knowledge and expertise of various types of farming to list house and acreage properties, hobby farms, commercial farms, and ranches for sale across British Columbia as well as finding the perfect property or agri-business for prospective buyers and investors.*



**GORD HOUWELING** PERSONAL REAL ESTATE CORP

604.793.8660

[gordhouweling@gmail.com](mailto:gordhouweling@gmail.com)

[www.gordhouweling.ca](http://www.gordhouweling.ca)

FOLLOW US ON SOCIAL MEDIA TODAY TO VIEW LATEST LISTING UPDATES!

