



# 1960 INDUSTRIAL PARK- BLDG B FOR SALE OR LEASE



**JONATHAN SELLERS**

CEO

832.748.1283

jonathan.sellers@revkocre.com

**BOOMER WHITE**

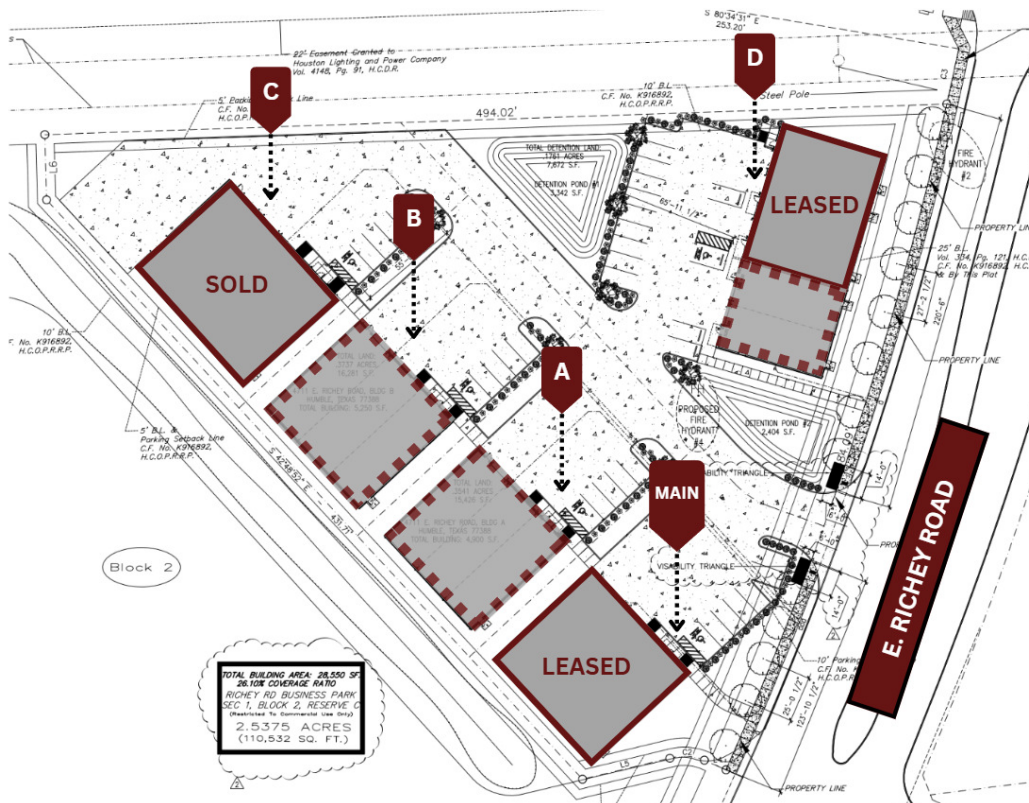
713.826.5033

boomer.white@revkocre.com

18803 Hamish, Suite F, Tomball, TX 77377 | 281.547.8334 | revkocre.com

# 1960 INDUSTRIAL PARK- BLDG B

4711 E RICHEY RD | HUMBLE, TX 77338



## FOR SALE OR LEASE

Size:	±5,250 SF
Office:	BTS
Eave Height:	±18'
Construction:	Fully insulated metal
Loading:	One (1) 14' x 16' grade level door
Power:	480V 3 Phase Power
Location:	Hardy Toll Road (±3 miles), Interstate 45 (±4 miles), Sam Houston Tollway (±6 miles), and Interstate 69 (±6 miles)

<b>SALE PRICE:</b>	<b>\$813,750</b>
<b>LEASE RATE:</b>	<b>\$7,402.50/ MONTH</b>



**JONATHAN SELLERS**  
 CEO  
 832.748.1283  
 jonathan.sellers@revkocre.com

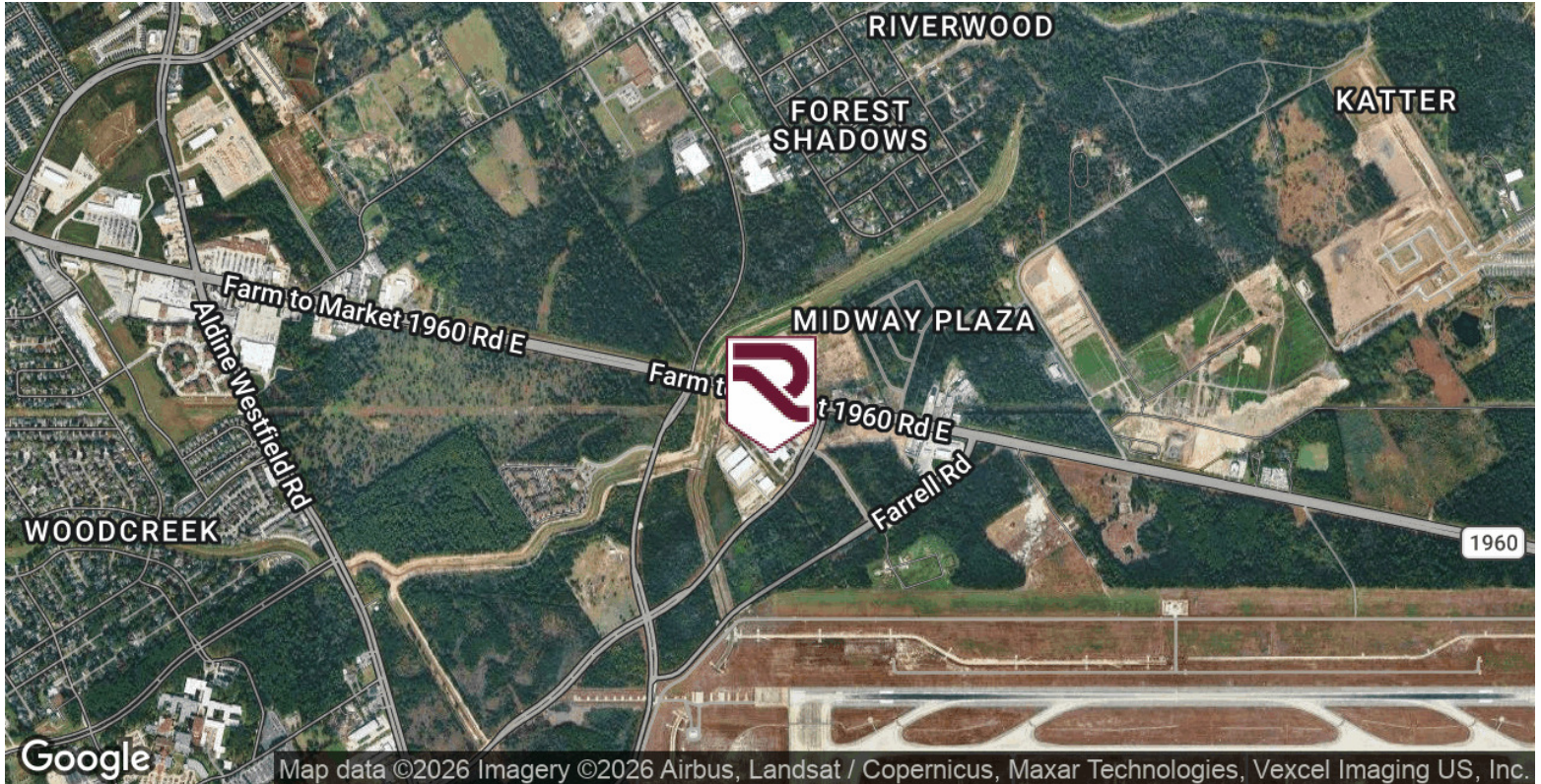
**BOOMER WHITE**  
 713.826.5033  
 boomer.white@revkocre.com



All information furnished regarding property for sale, rental or financing is from sources deemed reliable, but no warranty or representation is made to the accuracy thereof and same is submitted to errors, omissions, change of price, rental or other conditions prior to sale, lease or financing or withdrawal without notice. No liability of any kind is to be imposed on the broker herein.

# 1960 INDUSTRIAL PARK- BLDG B

4711 E RICHEY RD | HUMBLE, TX 77338



**JONATHAN SELLERS**

CEO  
832.748.1283  
jonathan.sellers@revkocre.com

**BOOMER WHITE**

713.826.5033  
boomer.white@revkocre.com



All information furnished regarding property for sale, rental or financing is from sources deemed reliable, but no warranty or representation is made to the accuracy thereof and same is submitted to errors, omissions, change of price, rental or other conditions prior to sale, lease or financing or withdrawal without notice. No liability of any kind is to be imposed on the broker herein.

