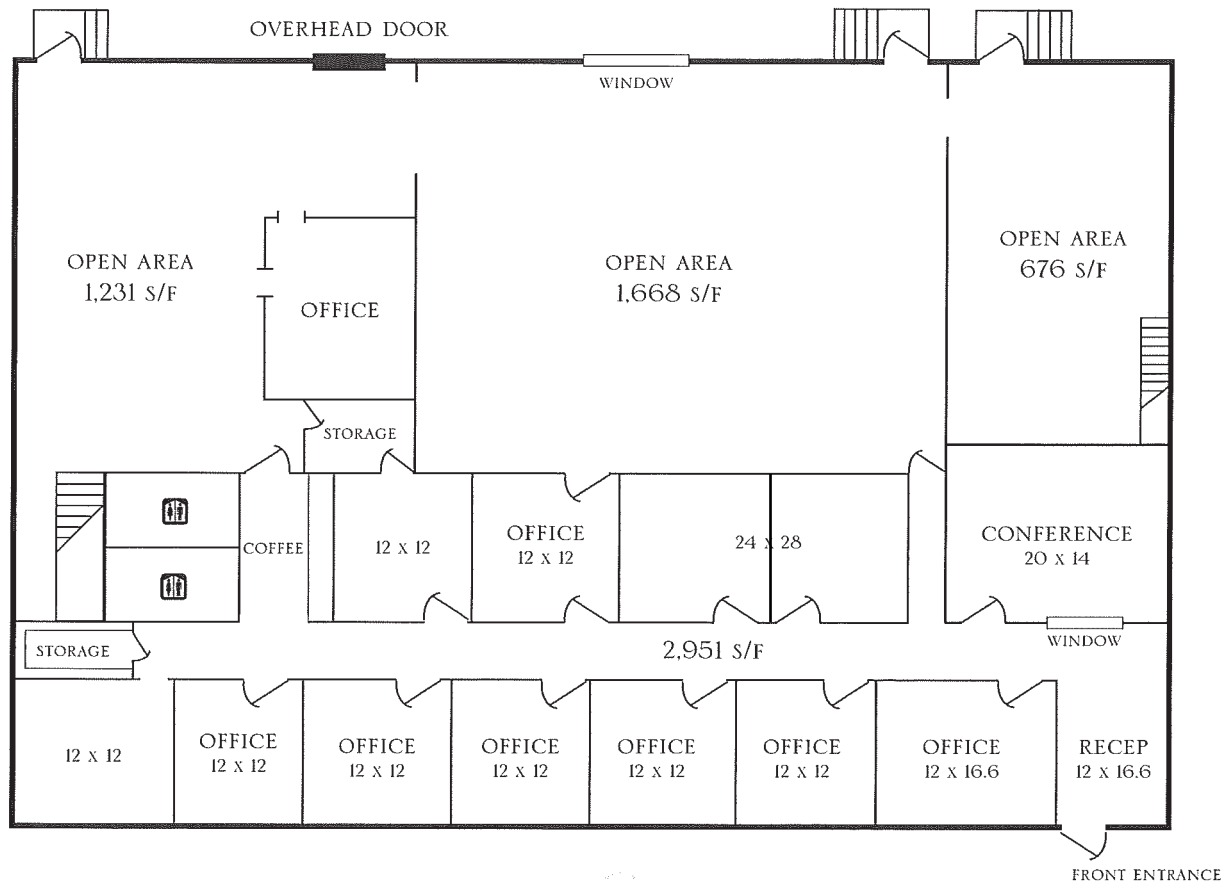


# EAST POINTE BUSINESS PARK

SUITE S

6,526 +/- S/F



3010 LAKELAND CV. • SUITE S • FLOWOOD, MS 39232



# EAST POINTE

*Business Park*



## **PERFECT LOCATION**

Minutes from all major hospitals, airports, residential neighborhoods, and Interstates 55 and 20.

## **FLEXIBLE DESIGN**

Office, showroom, warehouse with loading dock, and doorside parking - all under one roof.

## **LOCAL OWNERSHIP**

Designed by people who listen to their customers. Managed by people who understand your individual needs.

**CHAMBLEE**  
PROPERTIES

For Leasing Information 601-939-1281 ext. 230

3010 Lakeland Cove | Flowood, MS | 39232