

Authored by Rita Parasnis

Authored by Tony Carrasco

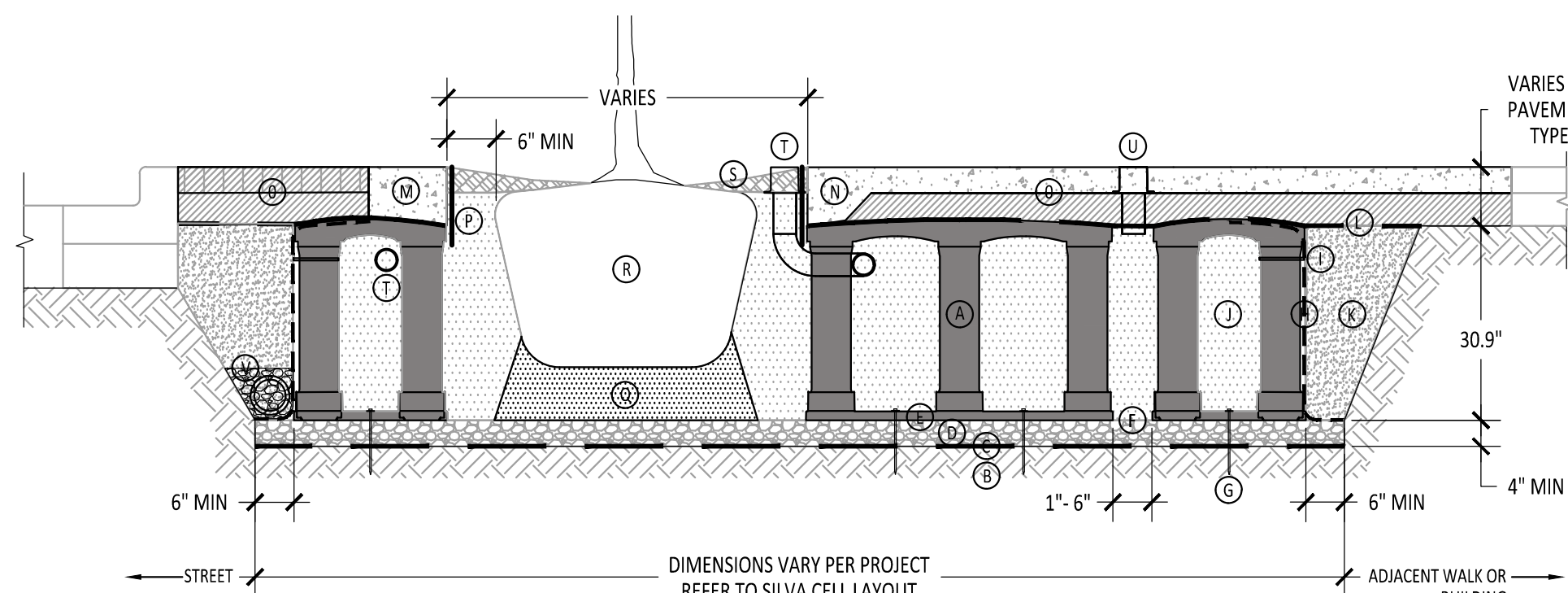
Authored by BB Patel

DMA #	DMA AREA DESCRIPTION	DMA AREA (SF)	IMPERVIOUS AREA (SF)	TREATMENT AREA REQ'D (SF)	TREATMENT PROVIDED	TREATMENT METHOD
DMA 1	LOT 1	6,459	3,522	141	183 SF	BIORETENTION & TRENCH INFILTRATION SYSTEM
DMA 2	LOT 2	6,237	3,520	141	141 SF	BIORETENTION & TRENCH INFILTRATION SYSTEM
DMA 3	LOT 3	5,513	3,053	122	379 SF	BIORETENTION & TRENCH INFILTRATION SYSTEM
DMA 4	LOT 4	5,500	3,236	130	170 SF	BIORETENTION & TRENCH INFILTRATION SYSTEM
DMA 5	LOT 5	5,500	3,236	130	170 SF	BIORETENTION & TRENCH INFILTRATION SYSTEM
DMA 6	LOT 6	5,500	3,236	130	170 SF	BIORETENTION & TRENCH INFILTRATION SYSTEM
DMA 7	LOT 7	5,511	3,236	130	379 SF	BIORETENTION & TRENCH INFILTRATION SYSTEM
DMA 8	LOT "A" GARDEN PL	17,160	14,298	572	58 CELLS W/ 3 TREES	SILVA CELL BIORETENTION/INFILTRATION SYSTEM
		57,380	37,337	1,496		

TABLE 2  
Silva Cell Sizing Guidelines — Sample based on Northern California requirements

Impervious Drainage Area, sq-ft.	4% Sizing Rule sq-ft.	Sq-ft Treatment Area / Silva Cell	Silva Cells required	Trees required* (1/50)
2,500	100	10	10	1
5,000	200	10	20	1
10,000	400	10	40	1
25,000	1000	10	40	1
50,000	2,000	10	200	4
100,000	4,000	10	400	8

\* Tree species selection based on local requirements. Sizing assumes standard 30' canopy street/plaza trees. Adjust ratio to 1/25 units if using small trees.



**SILVA CELL SYSTEM 2X**  
NOT TO SCALE

**KEY PLAN**

- 1 SILVA CELL SYSTEM (DECK, BASE, AND POSTS)
- 2 SUBGRADE, COMPACTED
- 3 GEOTEXTILE FABRIC, PLACED ABOVE SUBGRADE
- 4 4" MIN AGGREGATE SUB BASE, COMPACTED TO 95% PROCTOR
- 5 SILVA CELL BASE SLOPE, 10% MAX
- 6 1" TO 6" SPACING BETWEEN SILVA CELLS AT BASE
- 7 ANCHORING SPIKES, CONTACT DEEPROOF FOR ALTERNATIVE
- 8 GEGRID, WRAPPED AROUND PERIMETER OF SYSTEM, WITH 6" TOE (OUTWARD FROM BASE) AND 12" EXCESS (OVER TOP OF DECK)
- 9 CABLE TIE, ATTACHING GEGRID TO SILVA CELL AT BASE OF UPPER LEG FLARE, AS NEEDED

- 10 PLANTING SOIL, PER PROJECT SPECIFICATIONS, PLACED IN LIFTS AND WALK-IN COMPACTED TO 75-85% PROCTOR
- 11 COMPACTED BACKFILL, PER PROJECT SPECIFICATIONS
- 12 GEOTEXTILE FABRIC TO EDGE OF EXCAVATION
- 13 RIBBON CURB AT TREE OPENING (TO BE USED WITH PAVERS OR ASPHALT)
- 14 THICKENED EDGE AT TREE OPENING (TO BE USED WITH CONCRETE)
- 15 PAVEMENT AND AGGREGATE BASE PER PROJECT \*

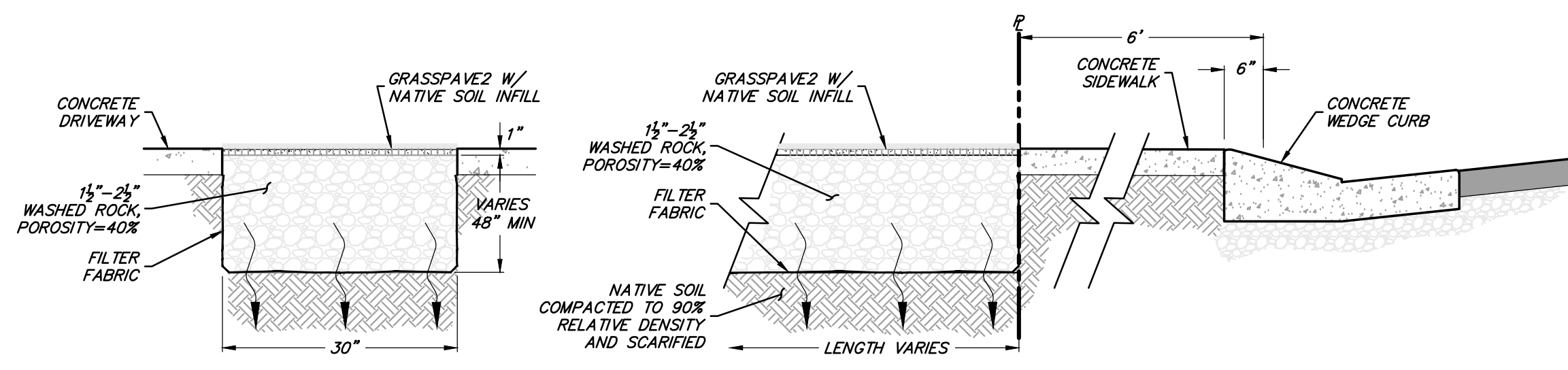
\*MINIMUM PAVEMENT PROFILE OPTIONS TO MEET H-20 LOADING

PAVEMENT	+ AGGREGATE BASE COURSE
4" CONCRETE	+ 4" AGGREGATE
3" PAVEMENT	+ 12" AGGREGATE
4" ASPHALT	+ 12" AGGREGATE
2.6" PAVEMENT	+ 5" CONCRETE

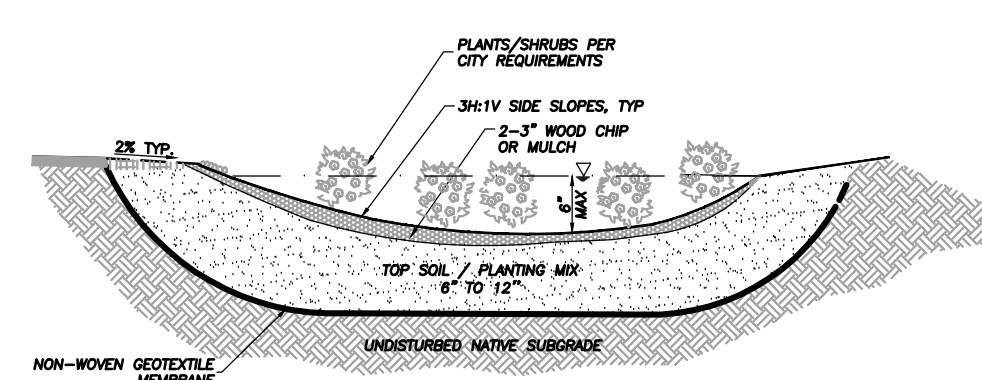
- 16 DEEPROOF ROOT BARRIER, 12" OR 18", DEPTH DETERMINED BY THICKNESS OF PAVEMENT SECTION, INSTALL DIRECTLY ADJACENT TO CONCRETE EDGE RESTRAINT
- 17 PLANTING SOIL BELOW ROOT BALL, COMPACTED WELL TO PREVENT SETTLING
- 18 ROOT BALL
- 19 TREE OPENING TREATMENT, PER PROJECT SPECIFICATIONS
- 20 DEEPROOF WATER AND AIR VENT, ROOTBALL, WHEN REQUIRED
- 21 DEEPROOF WATER AND AIR VENT, WHEN REQUIRED
- 22 UNDERDRAIN SYSTEM, WHEN REQUIRED (LOCATION AND DETAILS BY OTHERS)

- NOTES**
- EXCAVATION SHALL BE DONE IN ACCORDANCE WITH ALL APPLICABLE HEALTH AND SAFETY REGULATIONS
  - INSTALLATION TO BE COMPLETED IN ACCORDANCE WITH MANUFACTURER'S SPECIFICATIONS
  - PROVIDE SUPPLEMENTAL IRRIGATION
  - DO NOT SCALE DRAWINGS

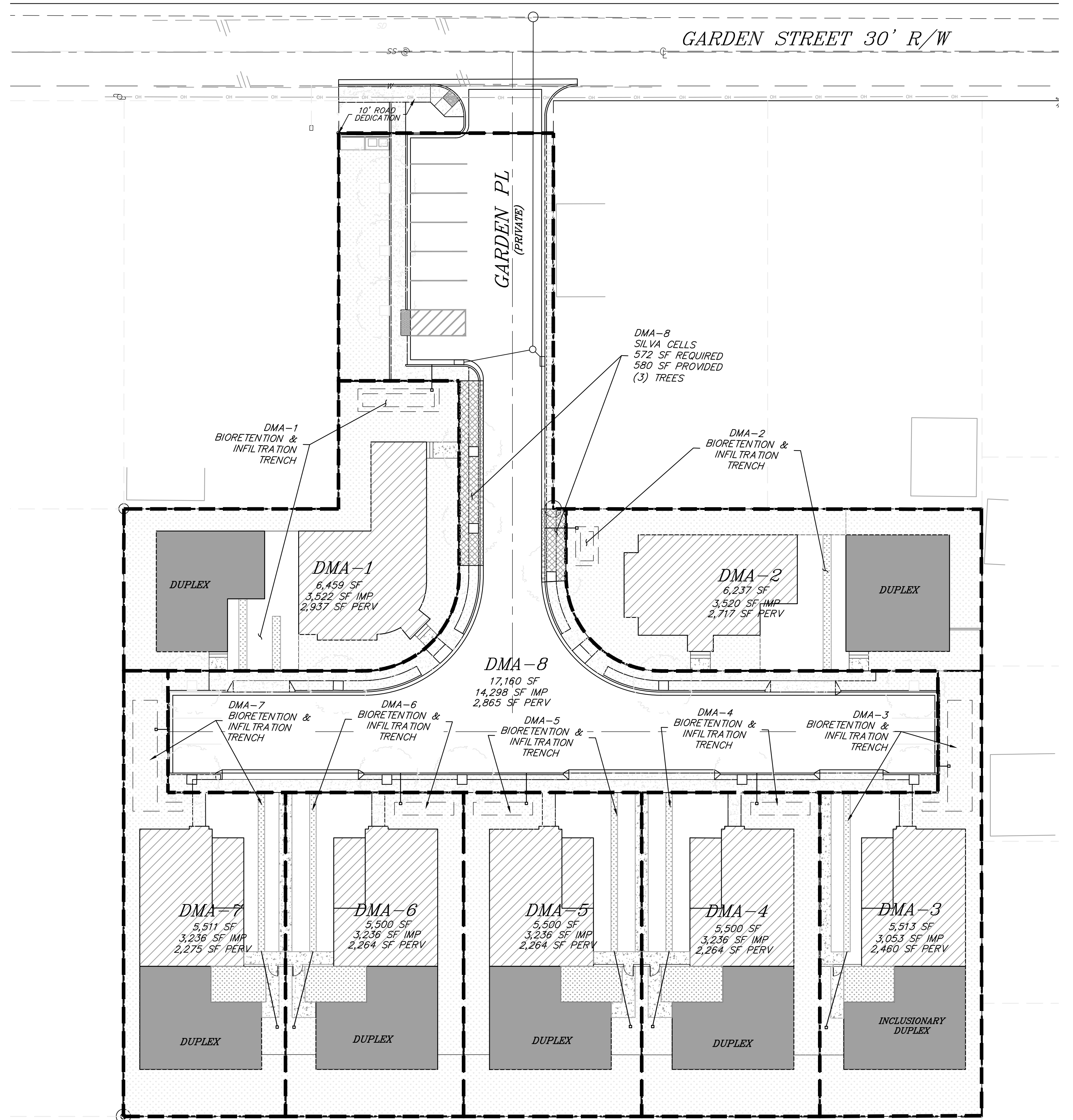
**SILVA CELL SECTION (TYP)**  
N.T.S.



**INFILTRATION TRENCH DETAIL (TYP)**  
N.T.S.

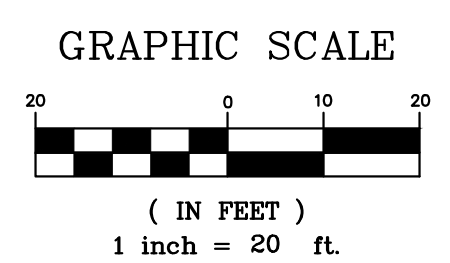


**RAIN GARDEN DETAIL (TYP)**  
N.T.S.

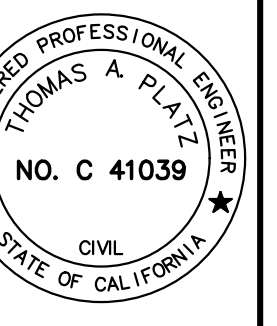


**LEGEND**

--- DMA BOUNDARY LINE



t h a  
triad/holmes assoc  
civil engineering  
land surveying  
MAMMOTH LAKES  
BISHOP  
REDWOOD CITY



Copyright (C) 2025 by Triad/Holmes Associates  
All Rights Reserved. This Document is intended Only for Use on the Project Specified in the Title Block. Reproduction of this Document or Portions of this Document, Without the Express Written Consent of Triad/Holmes, is Prohibited.

REVISIONS:

NO.	DESCRIPTION	BY

PREPARED FOR:  
GARDEN PLACE, LLC

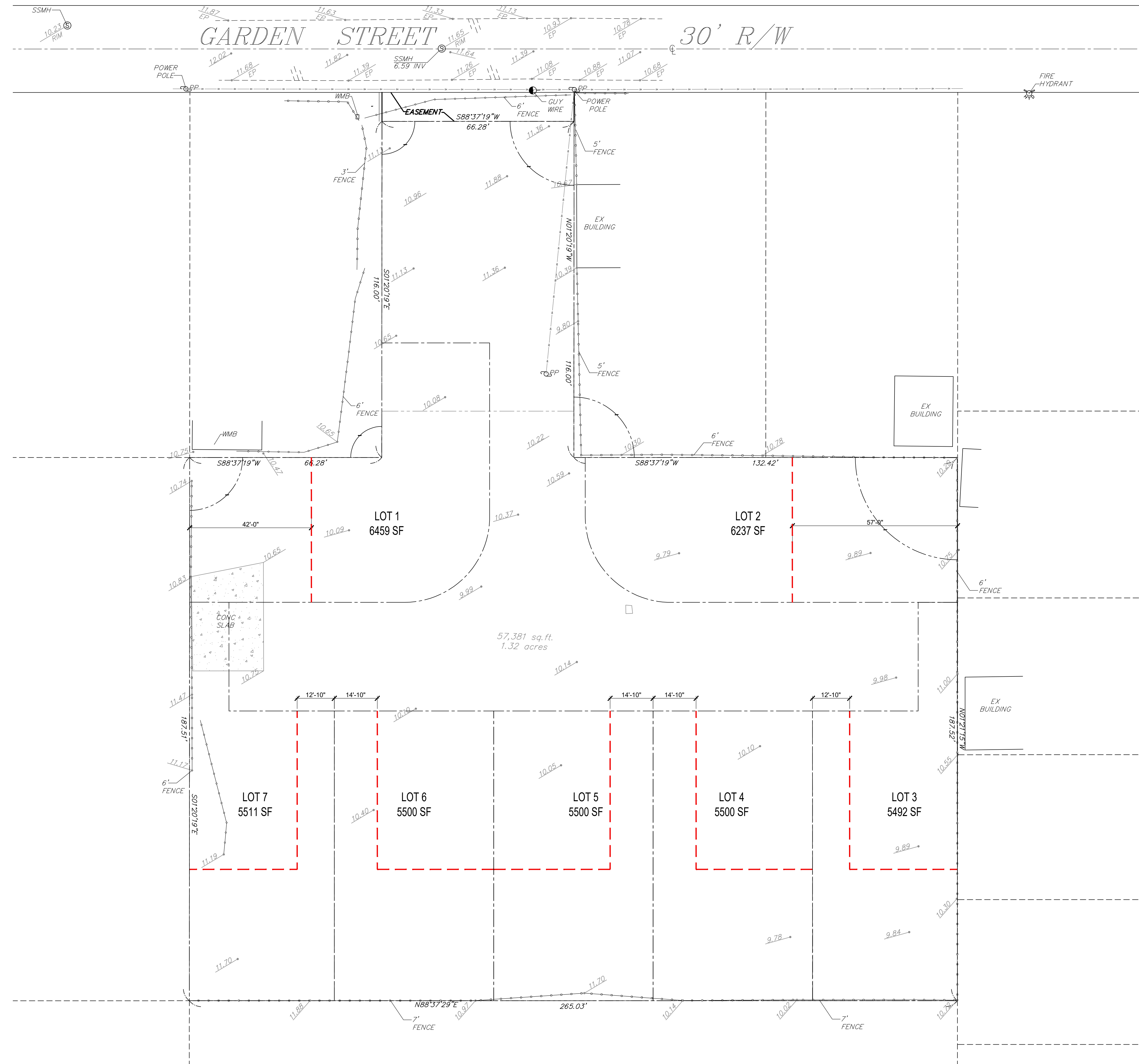
990 GARDEN STREET  
DMA MAP  
EAST PALO ALTO, SAN MATEO COUNTY, STATE OF CALIFORNIA

DATE	08/1/2022
SCALE	AS SHOWN
DRAWN	MP
JOB NO.	09.1708.1
DWG	DMA
SHEET	1 OF 1

**GARDEN PLACE**

990 GARDEN  
EAST PALO ALTO  
CA 94301

**PLANNING SUBMITTAL**

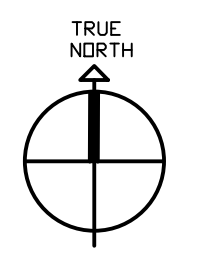


**LEGEND**  
 - - - - - CONDO DUPLEX

Date: 07'MAY 2024

Revisions:

Scale: 1:200



Sheet:

**CONDO  
DUPLEX**

**A1.1**