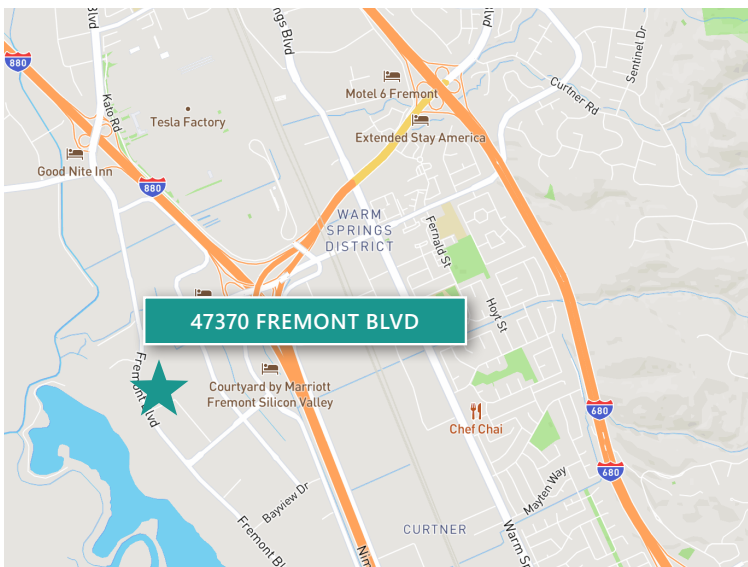


±16,000 SF

47370 Fremont Blvd  
Fremont, CA 94538

Prologis Park Bayside



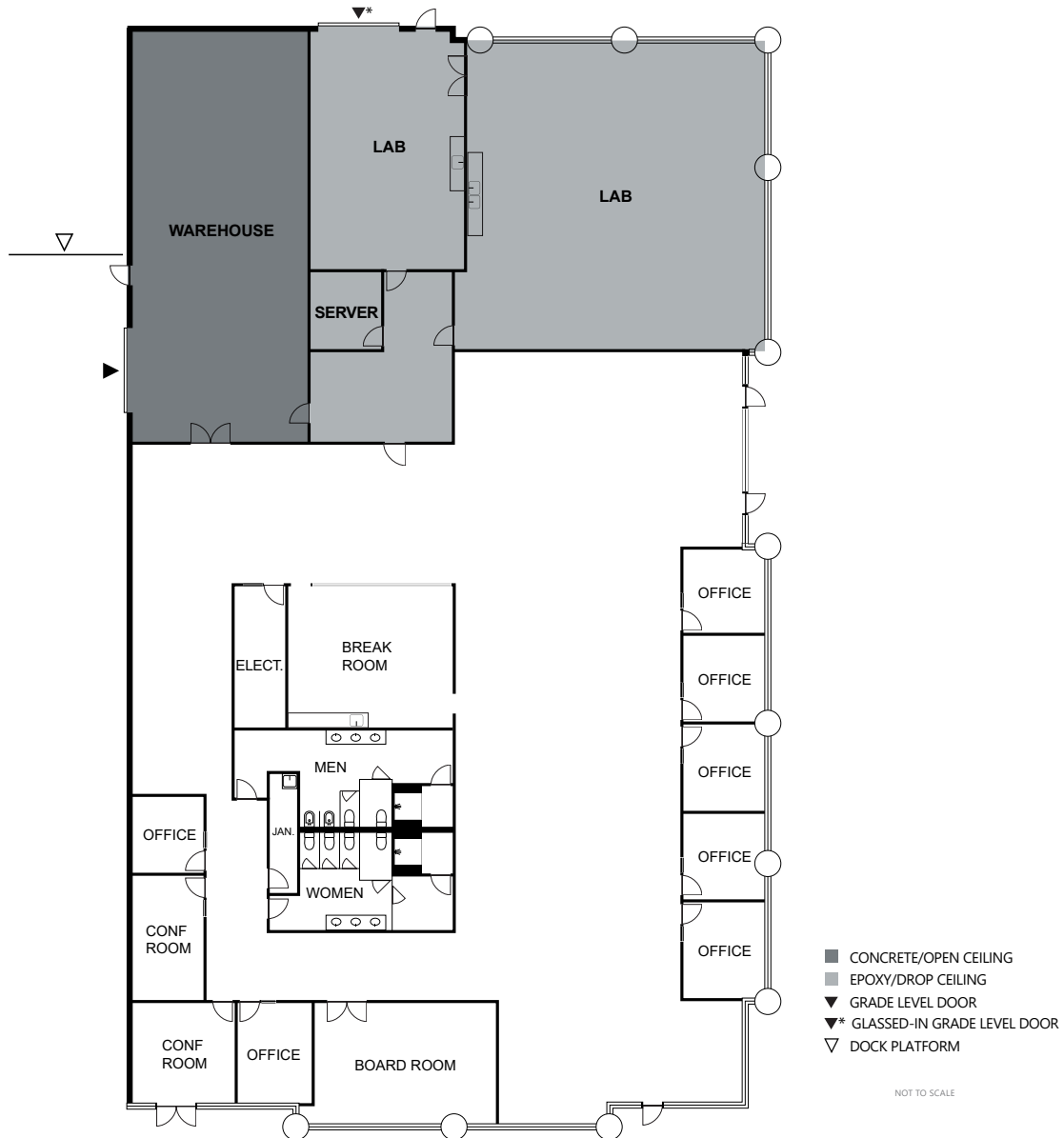
- Located in the desirable Bayside area of Fremont
- Easy access to I-880, I-680 & Hwy 237
- Minutes from the new Warm Springs BART Station
- New park amenities in place with additional amenities on the horizon
- Expansion opportunities within the 1.3M SF park

## Property Features

|                    |                                    |
|--------------------|------------------------------------|
| Available Space    | ±16,000 SF                         |
| Office SF          | ±10,400 SF                         |
| Clear Height       | 18'                                |
| Dock Doors         | Shared Dock Platform               |
| Drive-in Doors     | 1 + 1 Glassed-in                   |
| Electrical Service | 600 Amps @ 277/480V                |
| Sprinkler          | Calculated Fire Suppression System |
| Lighting           | LED Motion Sensor                  |
| Available          | Now                                |



Unlock the full potential of your warehouse with one strategic, single-source partner.



**CBRE**  
 Thomas Taylor  
 thomas.taylor@cbre.com  
 ph +1 408 453 7417

**CBRE**  
 Sherman Chan  
 sherman.chan@cbre.com  
 ph +1 408 453 7488

**CBRE**  
 Vince Machado  
 vince.machado@cbre.com  
 ph +1 408 453 7411

**CBRE**  
 Matthew Taylor  
 matthew.taylor@cbre.com  
 ph +1 408 453 7469

**Prologis**  
 Sonya Lal  
 slal@prologis.com  
 ph +1 510 661 4000  
 prologis.com

© 2026 CBRE, Inc. All rights reserved. This information has been obtained from sources believed reliable but has not been verified for accuracy or completeness. CBRE, Inc. makes no guarantee, representation or warranty and accepts no responsibility or liability as to the accuracy, completeness, or reliability of the information contained herein. You should conduct a careful, independent investigation of the property and verify all information. Any reliance on this information is solely at your own risk. CBRE and the CBRE logo are service marks of CBRE, Inc. All other marks displayed on this document are the property of their respective owners, and the use of such marks does not imply any affiliation with or endorsement of CBRE. Photos herein are the property of their respective owners. Use of these images without the express written consent of the owner is prohibited.

All rights reserved. No warranty or representation, expressed or implied, is made as to the accuracy of the information contained herein, and same is submitted subject to error and omissions.



Unlock the full potential of your warehouse with one strategic, single-source partner.



# CBRE

**CBRE**  
**Thomas Taylor**  
 thomas.taylor@cbre.com  
 ph +1 408 453 7417

**CBRE**  
**Sherman Chan**  
 sherman.chan@cbre.com  
 ph +1 408 453 7488

**CBRE**  
**Vince Machado**  
 vince.machado@cbre.com  
 ph +1 408 453 7411

**CBRE**  
**Matthew Taylor**  
 matthew.taylor@cbre.com  
 ph +1 408 453 7469

**Prologis**  
**Sonya Lal**  
 slal@prologis.com  
 ph +1 510 661 4000  
 prologis.com

© 2025 CBRE, Inc. All rights reserved. This information has been obtained from sources believed reliable but has not been verified for accuracy or completeness. CBRE, Inc. makes no guarantee, representation or warranty and accepts no responsibility or liability as to the accuracy, completeness, or reliability of the information contained herein. You should conduct a careful, independent investigation of the property and verify all information. Any reliance on this information is solely at your own risk. CBRE and the CBRE logo are service marks of CBRE, Inc. All other marks displayed on this document are the property of their respective owners, and the use of such marks does not imply any affiliation with or endorsement of CBRE. Photos herein are the property of their respective owners. Use of these images without the express written consent of the owner is prohibited.

All rights reserved. No warranty or representation, expressed or implied, is made as to the accuracy of the information contained herein, and same is submitted subject to error and omissions.



Unlock the full potential of your warehouse with one strategic, single-source partner.



# CBRE

**CBRE**  
 Thomas Taylor  
 thomas.taylor@cbre.com  
 ph +1 408 453 7417

**CBRE**  
 Sherman Chan  
 sherman.chan@cbre.com  
 ph +1 408 453 7488

**CBRE**  
 Vince Machado  
 vince.machado@cbre.com  
 ph +1 408 453 7411

**CBRE**  
 Matthew Taylor  
 matthew.taylor@cbre.com  
 ph +1 408 453 7469

**Prologis**  
 Sonya Lal  
 slal@prologis.com  
 ph +1 510 661 4000  
 prologis.com

© 2026 CBRE, Inc. All rights reserved. This information has been obtained from sources believed reliable but has not been verified for accuracy or completeness. CBRE, Inc. makes no guarantee, representation or warranty and accepts no responsibility or liability as to the accuracy, completeness, or reliability of the information contained herein. You should conduct a careful, independent investigation of the property and verify all information. Any reliance on this information is solely at your own risk. CBRE and the CBRE logo are service marks of CBRE, Inc. All other marks displayed on this document are the property of their respective owners, and the use of such marks does not imply any affiliation with or endorsement of CBRE. Photos herein are the property of their respective owners. Use of these images without the express written consent of the owner is prohibited.

All rights reserved. No warranty or representation, expressed or implied, is made as to the accuracy of the information contained herein, and same is submitted subject to error and omissions.

# GO BEYOND THE BUILDING

**Prologis Essentials** is the single source for warehouse solutions to keep facilities running at a high level of efficiency. Our offerings are easy and convenient to procure and implement, providing support for move-in, moving forward, and growing any business.

## MATERIAL HANDLING

- A. Racking & Shelving
  - I. Layout and Design
  - II. New and Used Material
  - III. Permitting Services
  - IV. Buybacks and Liquidations
- B. Forklifts
  - I. Electric and Propane
  - II. New, Used, and Refurbished
  - III. Rentals
  - IV. Service



## ENERGY

- A. Solar
- B. LED Lighting
- C. EV Charging
- D. Generators



## AUTOMATION/ ADVANCED SOLUTIONS

- A. Conveyor and Sortation
- B. Locus Robotics
- C. VLMs, Shuttles, Carousels, AS/RS
- D. Pick Modules/Mezzanine

## SMART BUILDING

- A. Fiber Backbone
- B. Network and Cabling
- C. Internet Service
- D. Access Points
- E. Security Cameras and Monitoring Services
- F. Badge Access and Control
- G. Barcode Scanning



## PRODUCTS AND SERVICES

- A. Moving and Relocation Services
- B. HVLS Fans
- C. Office Furniture
- D. In-Plant Modular Offices
- E. Yard Ramps
- F. Janitorial Service
- G. Pest Control



**John Kenley**  
Essentials Solutions Manager  
jkenley@prologis.com  
415-733-9402

 **PROLOGIS**<sup>®</sup>  
ESSENTIALS  
[www.prologisessentials.com](http://www.prologisessentials.com)