



GREYLYN BUSINESS PARK

DESIGNED TO ACCOMMODATE ALL
YOUR BUSINESS NEEDS

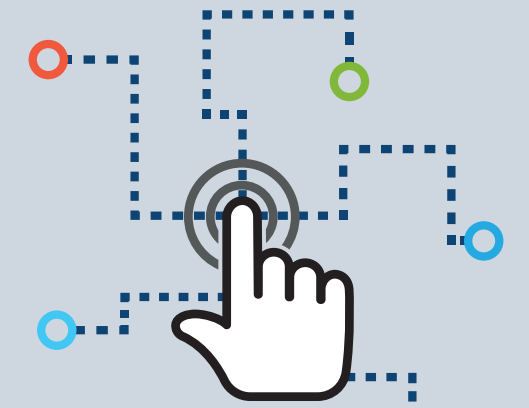


**±648,048 SF INDUSTRIAL OFFICE / WAREHOUSE FOR LEASE
9101-9517 Monroe Road | Charlotte, NC 28270**



GREYLYN
BUSINESS PARK

INTERACTIVE SITE PLAN

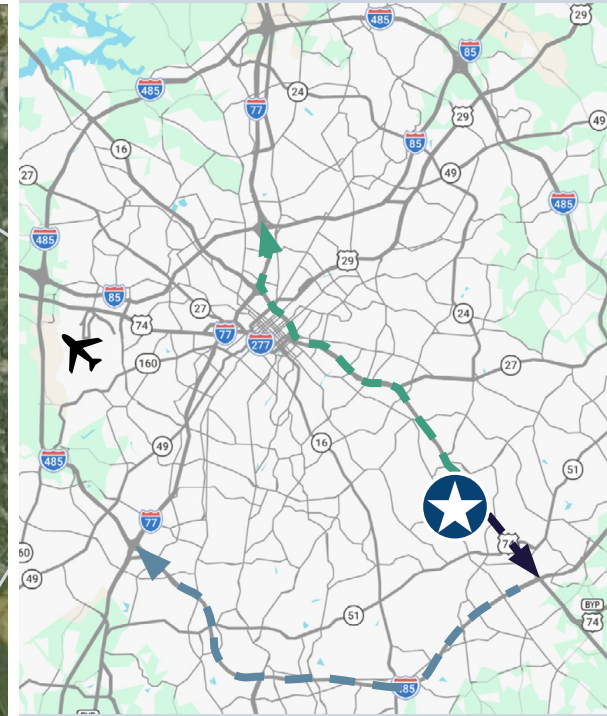


-  SPACE AVAILABLE
-  OCCUPIED
-  VIEW FLOOR PLANS
-  VIEW ON GOOGLE MAPS

LOCATION OVERVIEW



DRIVE TIME



ACCESS	MINUTES	MILES
	6	1.8
	9	4.4
	17	14.5
	20	19.1
CLT-DOUGLAS INTERNATIONAL AIRPORT	28	16.2

◀ BACK



9111 MONROE ROAD

SUITES 175 & 185



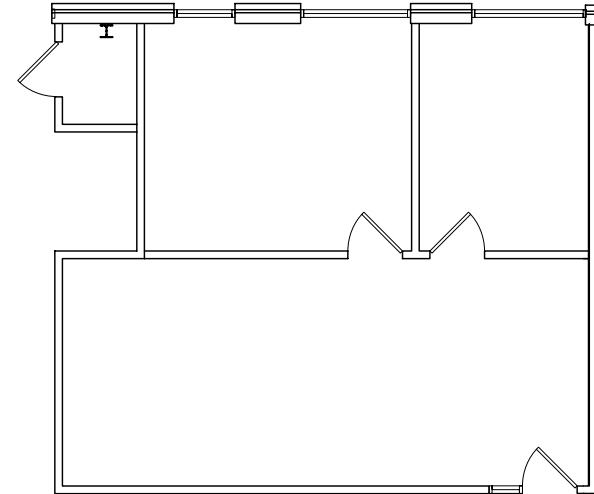
SUITE 175

Total Available SF: 725 SF | 100% Office

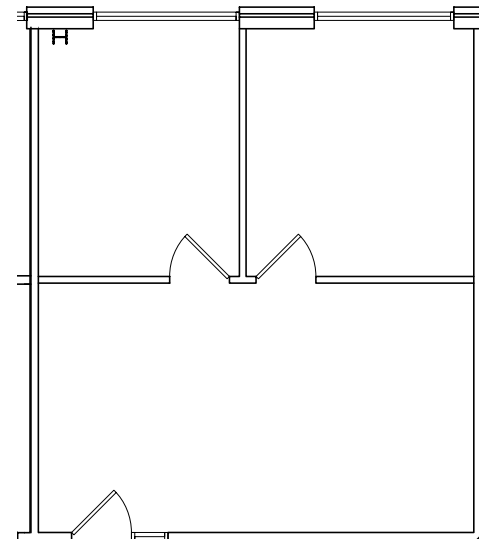
SUITE 185

Total Available SF: 781 SF | 100% Office

SUITE 175



SUITE 185





9117 MONROE ROAD

SUITE 120



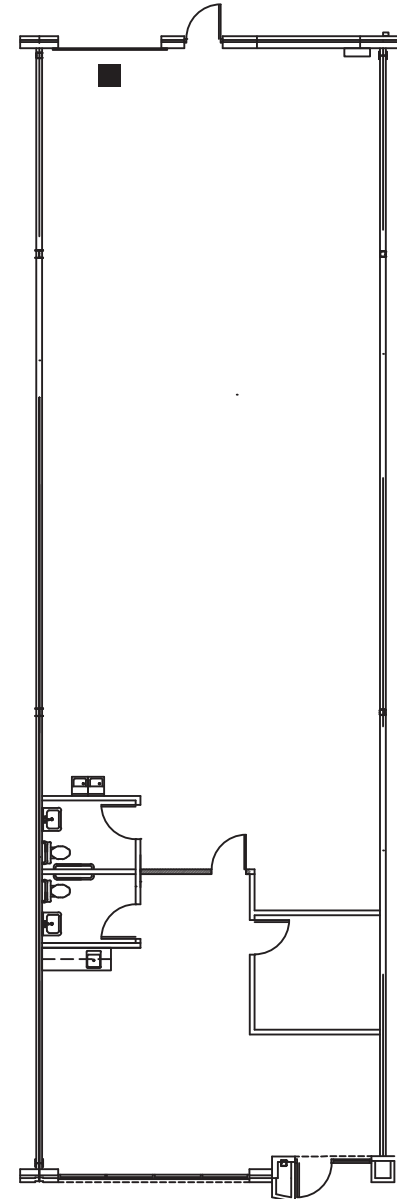
SUITE 120

Total Available SF: 3,025 SF | 20% Office

Drive-In Door 1

*Available June 1, 2026

SUITE 120



*Make-ready in progress

■ Drive-in Door

◀ BACK



9301 MONROE ROAD

SUITES I & L



SUITE I

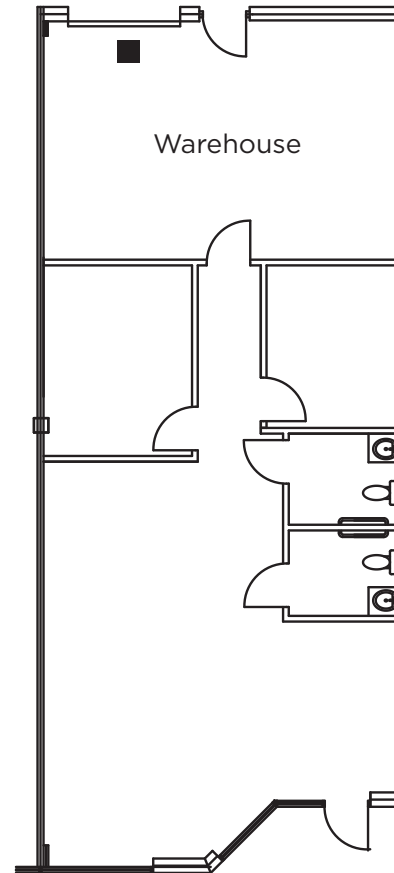
Total Available SF: 1,500 SF | 70% Office

Drive-In Door 1

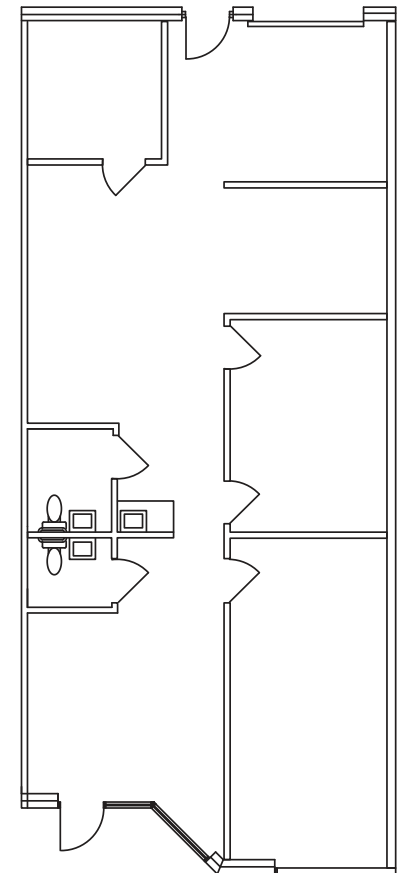
SUITE L

Total Available SF: 1,500 SF | 100% Office

SUITE I



SUITE L



■ Drive-in Door

◀ BACK



9303 MONROE ROAD

SUITES A, B, I1 & M



SUITE A

Total Available SF: 2,416 SF | 100% Office

SUITE B

Total Available SF: 1,250 SF | 100% Office

SUITE I1

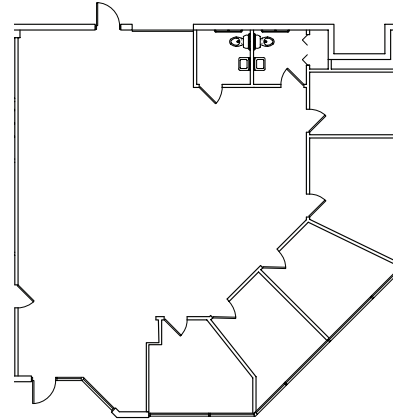
Total Available SF: 862 SF | 100% Office

SUITE M

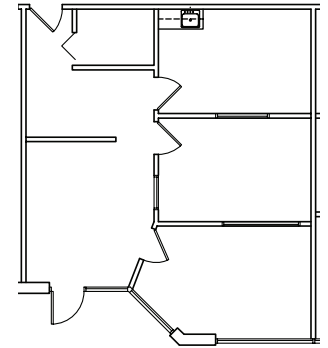
Total Available SF: 1,500 SF | 50% Office

Drive-In Door 1

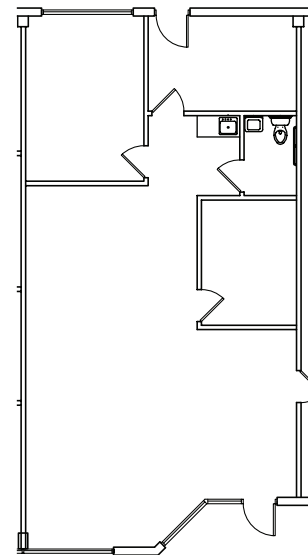
SUITE A



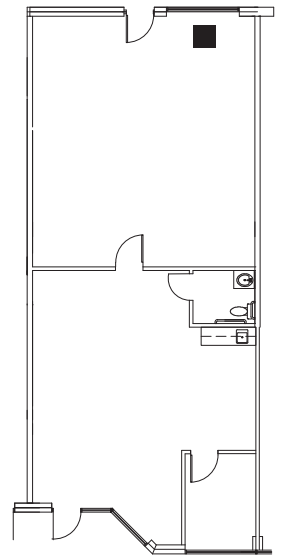
SUITE I1



SUITE B



SUITE M



*Make-ready in progress

■ Drive-in Door



9307 MONROE ROAD

SUITES C & E



SUITE C

Total Available SF: 2,500 SF | 75% Office

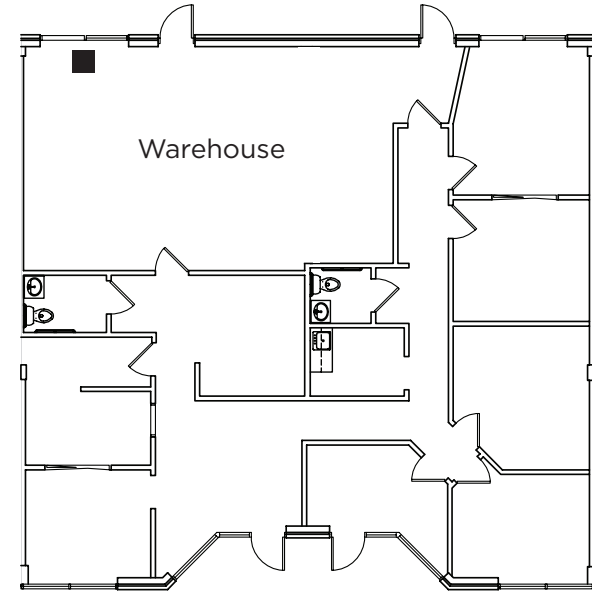
Drive-In Door 1

SUITE E

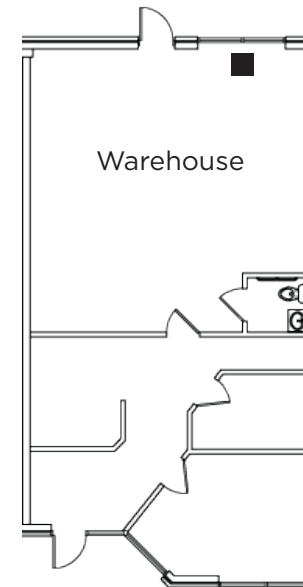
Total Available SF: 1,250 SF | 50% Office

Drive-In Door 1

SUITE C



SUITE E



■ Drive-in Door

◀ BACK



9311 MONROE ROAD

SUITE K

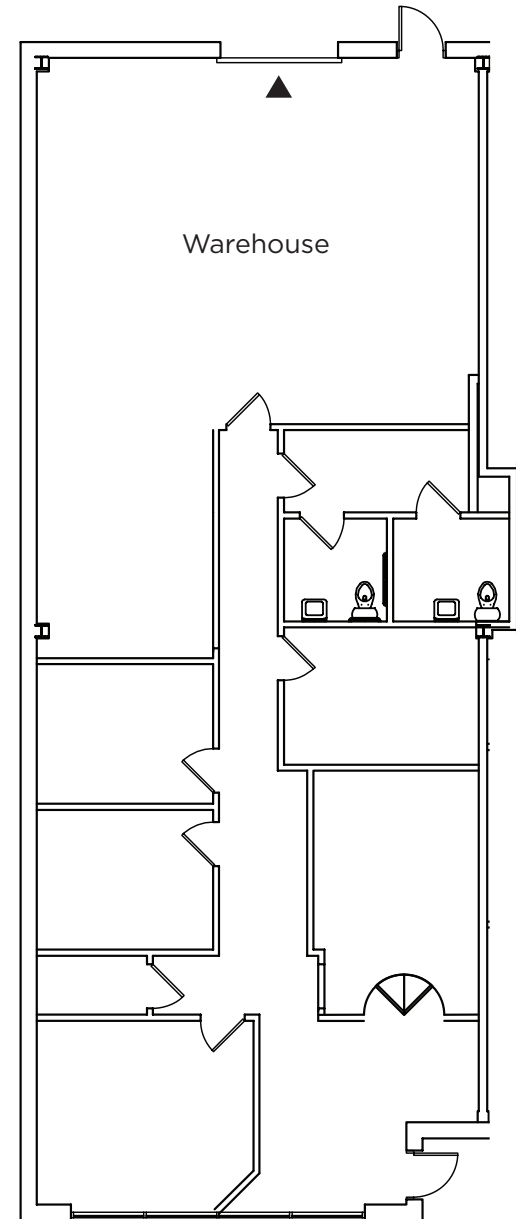


SUITE K

Total Available SF: 2,490 SF | 60% Office

Dock High Door 1

SUITE K



▲ Dock High Door

◀ BACK



9317 MONROE ROAD

SUITES D/E & F/G/H



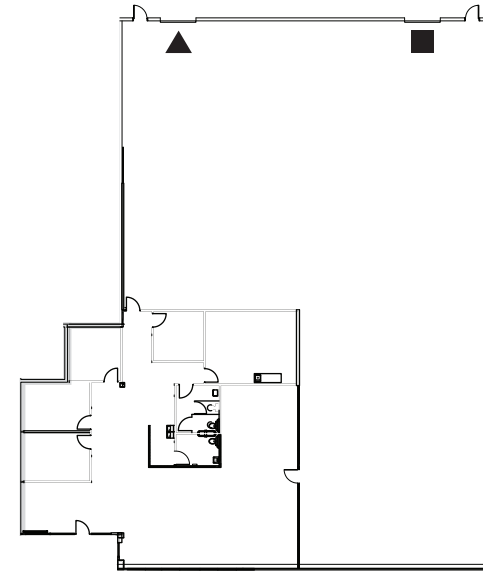
SUITE D & E

Total Available SF:	11,210 SF
Office SF:	±2,500 SF
Dock High Door:	1
Drive-In Door:	1
Clear Height:	18'

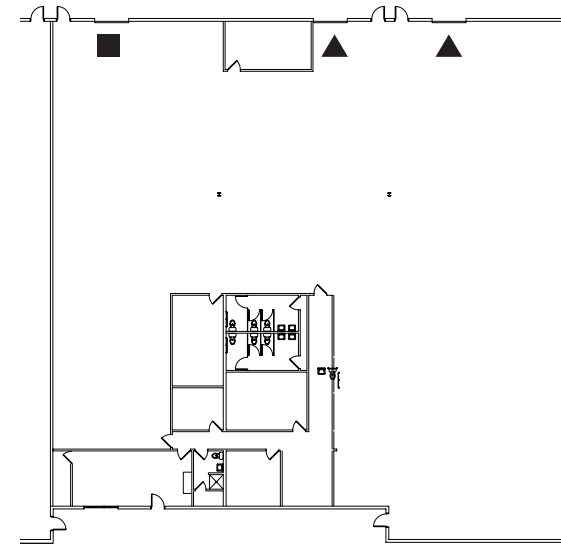
SUITE F, G & H

Total Available SF:	15,000 SF
Office SF:	±2,500 SF
Dock High Door:	2
Drive-In Door:	1
Clear Height:	18'

SUITE D & E



SUITE F, G & H



- ▲ Dock High Door
- Drive-in Door



GREYLYN

BUSINESS PARK

Charlotte, North Carolina

ERIN TURULSKI
+1 704 916 1565
erin.turulski@cushwake.com

LAUREN ABSHER
+1 704 916 1559
lauren.absher@cushwake.com

©2026 Cushman & Wakefield. All rights reserved. The information contained in this communication is strictly confidential. This information has been obtained from sources believed to be reliable but has not been verified. No warranty or representation, express or implied, is made as to the condition of the property (or properties) referenced herein or as to the accuracy or completeness of the information contained herein, and same is submitted subject to errors, omissions, change of price, rental or other conditions, withdrawal without notice, and to any special listing conditions imposed by the property owner(s). Any projections, opinions or estimates are subject to uncertainty and do not signify current or future property performance. PD-14425-V41

