



TRADEMARK
PROPERTIES

0 CONTINENTAL DR

ELIZABETH CITY, NC 27909

1.53 ACRES
FOR
SALE

LISTING BROKER:

MIKE KEEN

919.573.1392 (O) | 919.795.1944 (M)

MKEEN@TRADEMARKPROPERTIES.COM



1001 WADE AVENUE SUITE 300, RALEIGH, NC 27605
TRADEMARKPROPERTIES.COM | 919-782-5552

0 CONTINENTAL DR
ELIZABETH CITY, NC 27909

PROPERTY DESCRIPTION

- › 1.53 acres of riverfront land on the scenic Pasquotank River
- › Prime downtown Elizabeth City location with strong visibility and access
- › Zoned O&I (Office & Institutional)
- › Residential development potential
 - › Townhomes permitted by right
 - › Multifamily allowed with Council Use Permit
 - › Building heights up to 8 stories
- › Public water & sewer available
- › Two parcel IDs included:
 - › PIN #892417019595
 - › PIN #892417019655

SALE PRICE:
\$1,200,000



MIKE KEEN
919.573.1392 (O) | 919.795.1944 (M)
MKEEN@TRADEMARKPROPERTIES.COM

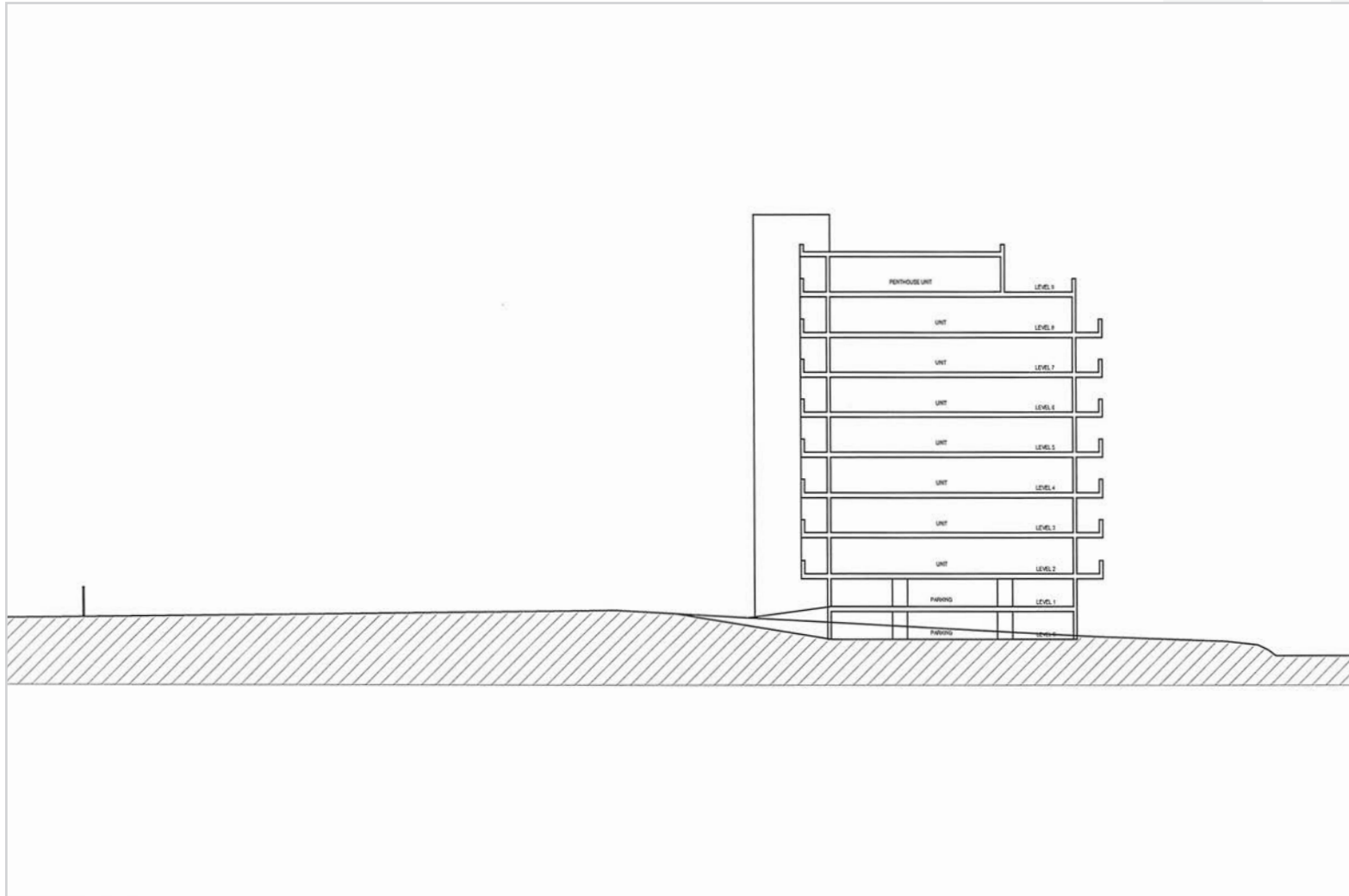
1001 WADE AVENUE
SUITE 300, RALEIGH, NC 27605
TRADEMARKPROPERTIES.COM
919-782-5552

CONCEPTUALS



0 CONTINENTAL DR
ELIZABETH CITY, NC 27909

CONCEPTUALS



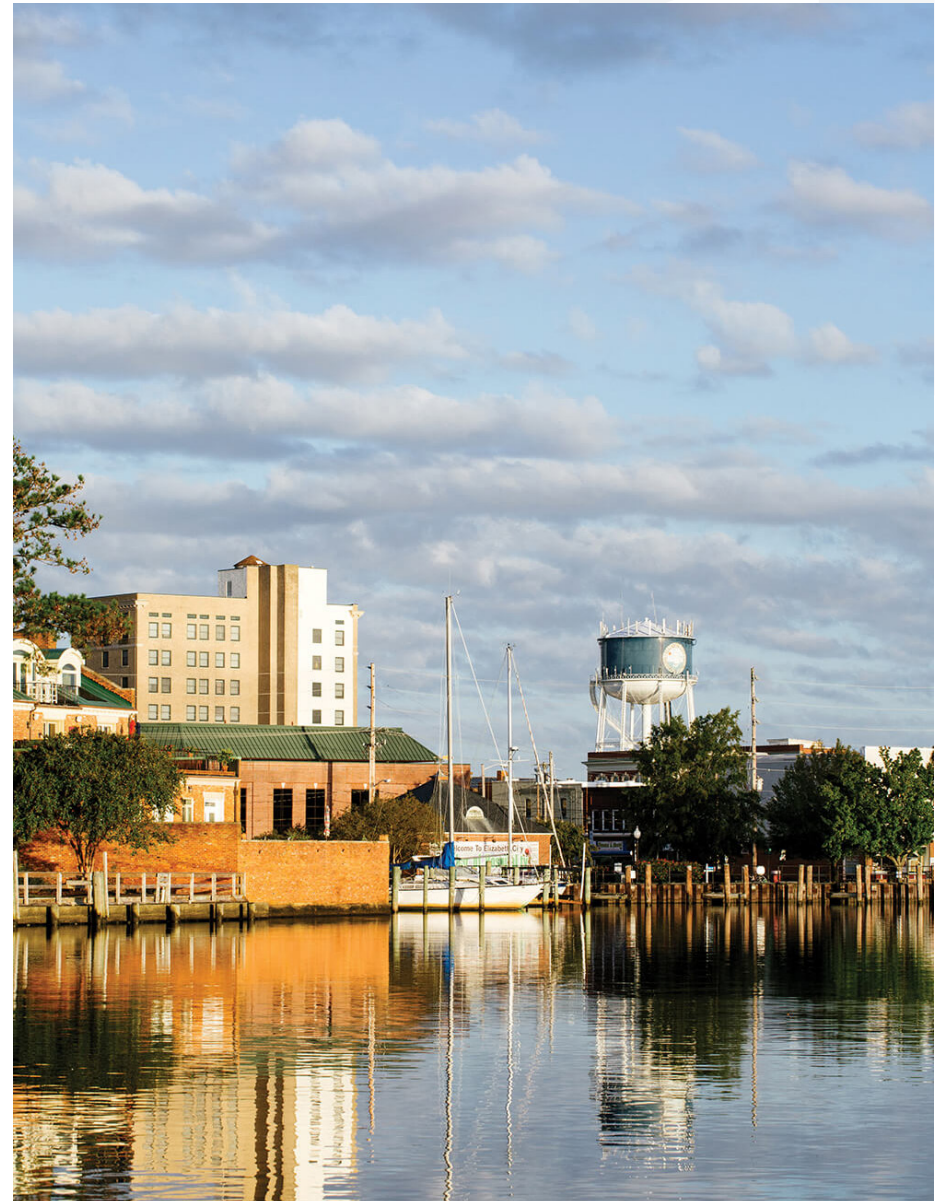
MIKE KEEN
919.573.1392 (O) | 919.795.1944 (M)
MKEEN@TRADEMARKPROPERTIES.COM

1001 WADE AVENUE
SUITE 300, RALEIGH, NC 27605
TRADEMARKPROPERTIES.COM
919-782-5552

PASQUOTANK COUNTY

Strategically located in Northeastern North Carolina, Pasquotank County offers direct access to major highways with convenient connections to Interstate 64, Interstate 95, and the Hampton Roads metropolitan area

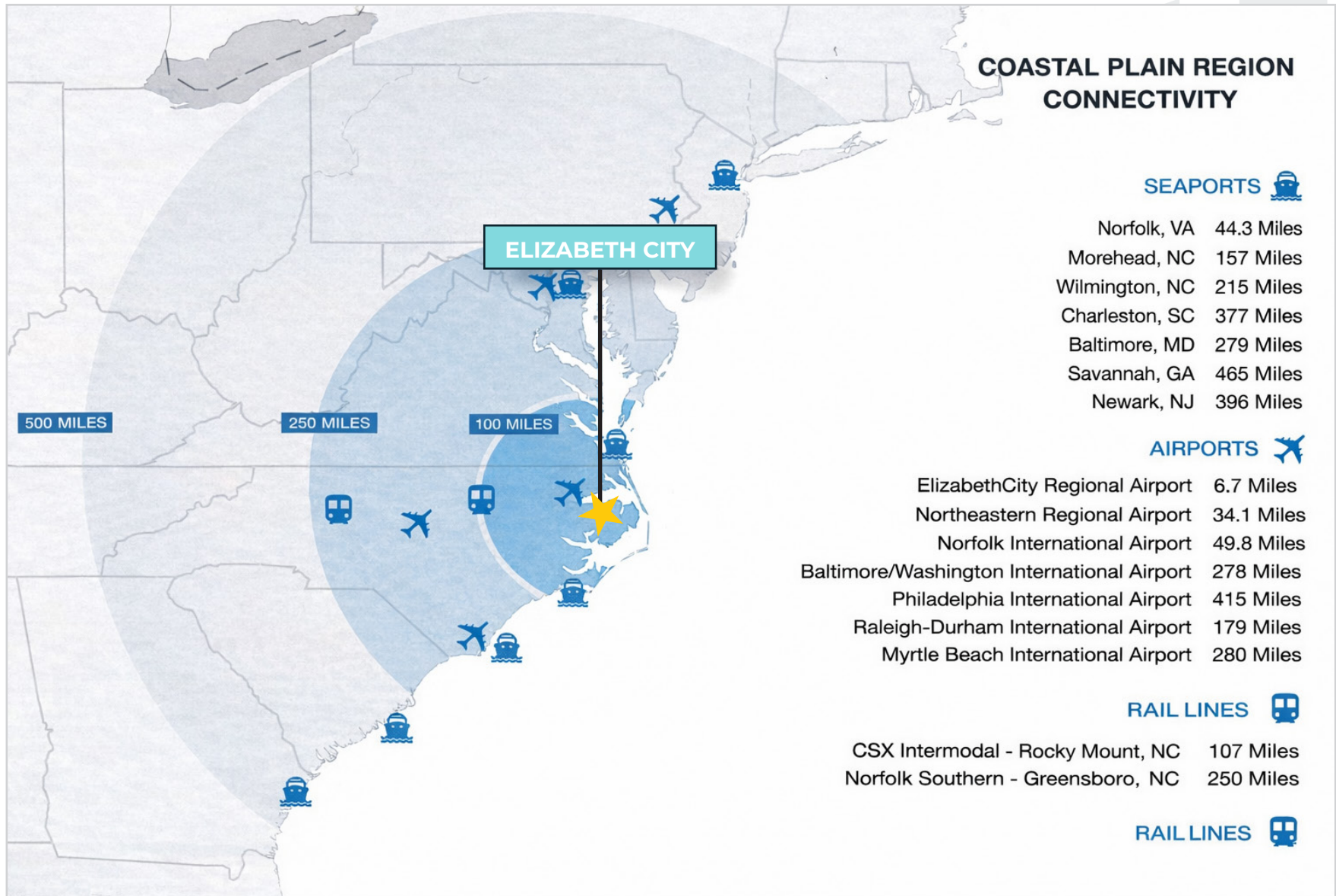
- » Elizabeth City serves as the county seat and economic hub, providing access to coastal ports, regional transportation corridors, and East Coast markets
- » The U.S. Coast Guard Base Elizabeth City is the largest employer in Northeastern NC with more than 2,000 jobs, supporting aviation, aerospace, and precision manufacturing industries
- » Pasquotank County has a population of over 41,000 and offers a skilled, educated workforce with more than 84% of residents holding a high school diploma or higher
- » Workforce supported by College of the Albemarle, Elizabeth City State University, and Mid-Atlantic Christian University
- » Key industries include aviation and aerospace, food and beverage processing, green energy manufacturing, warehousing and distribution, tourism, and precision manufacturing



MIKE KEEN
919.573.1392 (O) | 919.795.1944 (M)
MKEEN@TRADEMARKPROPERTIES.COM

1001 WADE AVENUE
SUITE 300, RALEIGH, NC 27605
TRADEMARKPROPERTIES.COM
919-782-5552

0 CONTINENTAL DR
ELIZABETH CITY, NC 27909



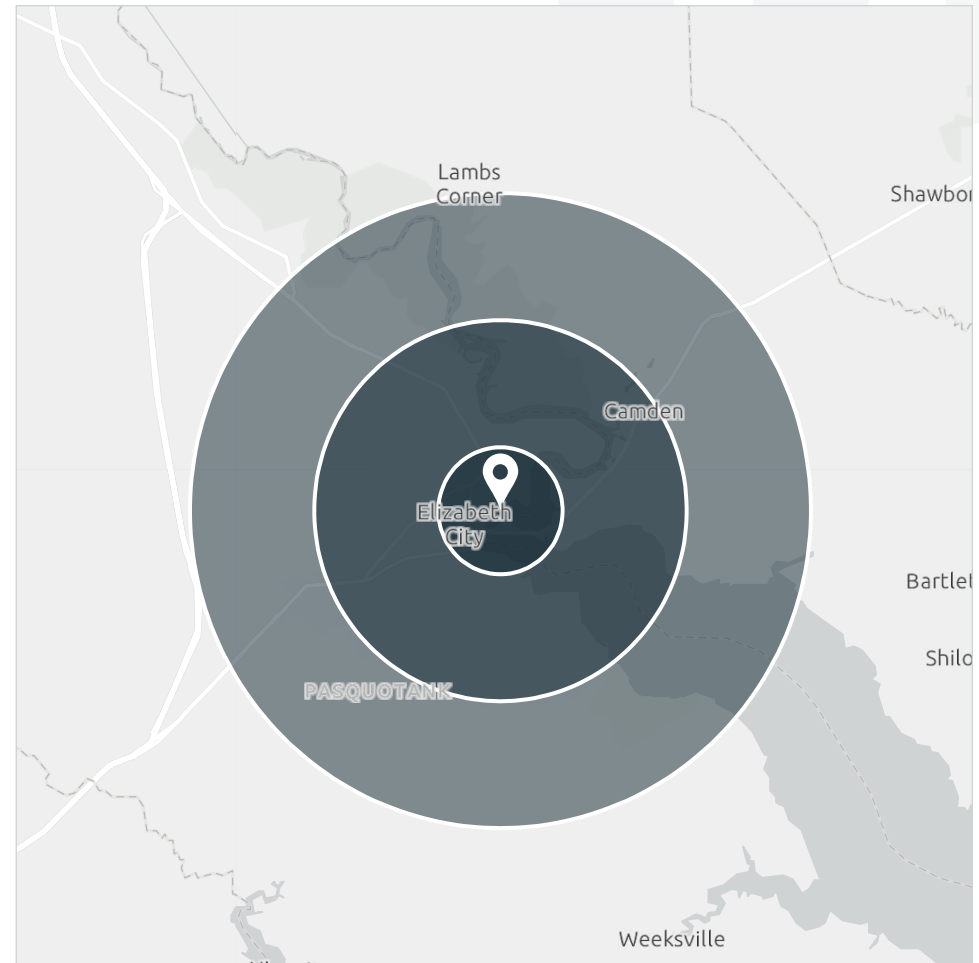
MIKE KEEN
919.573.1392 (O) | 919.795.1944 (M)
MKEEN@TRADEMARKPROPERTIES.COM

1001 WADE AVENUE
SUITE 300, RALEIGH, NC 27605
TRADEMARKPROPERTIES.COM
919-782-5552

0 CONTINENTAL DR
ELIZABETH CITY, NC 27909

DEMOGRAPHICS

| | 1 Mile | 3 Miles | 5 Miles |
|--|----------|----------|----------|
| 2025 POPULATION | 3,726 | 21,919 | 31,478 |
| 2030 POPULATION (PROJECTED) | 3,776 | 22,078 | 31,838 |
| 2025 HOUSEHOLDS | 1,703 | 9,005 | 12,765 |
| 2030 HOUSEHOLDS (PROJECTED) | 1,753 | 9,252 | 13,169 |
| OWNER-OCCUPIED HOUSING UNITS | 700 | 4,703 | 7,588 |
| RENTER-OCCUPIED HOUSING UNITS | 1,003 | 4,302 | 5,177 |
| NUMBER OF BUSINESSES | 160 | 1,172 | 1,535 |
| NUMBER OF EMPLOYEES | 2,532 | 12,797 | 16,970 |
| 2025 AVERAGE HOUSEHOLD INCOME | \$63,200 | \$72,982 | \$78,124 |
| 2030 AVG HOUSEHOLD INCOME (PROJECTED) | \$67,522 | \$78,896 | \$84,746 |



MIKE KEEN
919.573.1392 (O) | 919.795.1944 (M)
MKEEN@TRADEMARKPROPERTIES.COM

1001 WADE AVENUE
SUITE 300, RALEIGH, NC 27605
TRADEMARKPROPERTIES.COM
919-782-5552

LISTING BROKER:

MIKE KEEN

919.573.1392 DIRECT | 919.795.1944 MOBILE
MKEEN@TRADEMARKPROPERTIES.COM



THIS IS OUR TRADEMARK

THE INFORMATION CONTAINED HEREIN WAS OBTAINED FROM SOURCES BELIEVED RELIABLE; HOWEVER, TRADEMARK PROPERTIES MAKES NO GUARANTEES, WARRANTIES, OR REPRESENTATIONS AS TO THE COMPLETENESS OR ACCURACY THEREOF. THE PRESENTATION OF THIS PROPERTY IS SUBMITTED SUBJECT TO ERRORS, OMISSIONS, CHANGES OF PRICE OR CONDITIONS PRIOR TO SALE OR LEASE, OR WITHDRAWAL WITHOUT NOTICE.