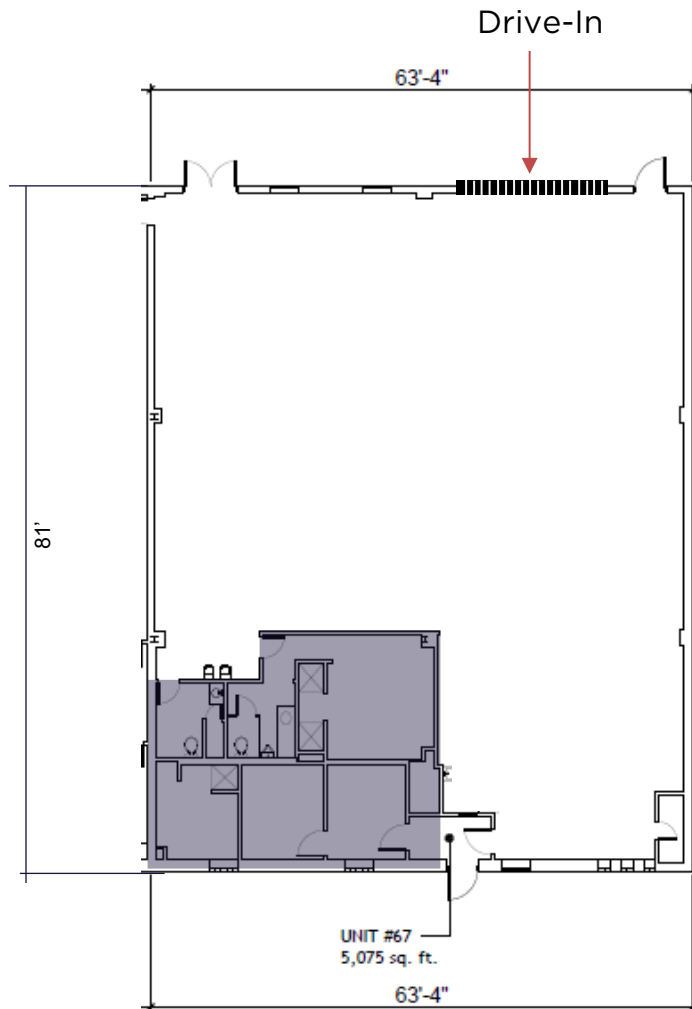


# COMING SOON TO MARKET | 5,075 SF

## Industrial Space for Lease



## 67 Bloomingdale Road, Hicksville

### Available Space Specifications

<b>Suite</b>	B
<b>Availability Date:</b>	Immediate
<b>Available Space</b>	5,075 SF
<b>Office Space:</b>	800 SF
<b>Ceiling Height:</b>	15' Clear
<b>Drive-Ins:</b>	2
<b>Power:</b>	400 Amps
<b>Lighting:</b>	LED
<b>Pricing:</b>	Upon Request
<b>Comments:</b>	<ul style="list-style-type: none"><li>• Extensive Exterior and Interior Improvements Planned</li><li>• Fully Air-Conditioned Space</li><li>• Bathroom and Locker Rooms</li><li>• Excellent Access to Route 107 to LIE Exit 41</li><li>• Grade level loading</li><li>• New parking lot</li></ul>

### CUSHMAN & WAKEFIELD LONG ISLAND INDUSTRIAL ADVISORY GROUP EXCLUSIVE BROKER CONTACT:

**NICK GALLIPOLI**  
(t) +1 631 926 2868  
[nickg@cushwake.com](mailto:nickg@cushwake.com)

**JOHN GIANNUZZI**  
(t) +1 631 425 1228  
[john.giannuzzi@cushwake.com](mailto:john.giannuzzi@cushwake.com)

**DAVID FRATTAROLI**  
(t) +1 516 859 6396  
[david.frattaroli@cushwake.com](mailto:david.frattaroli@cushwake.com)

# 67 Bloomingdale Road, Hicksville

## Industrial Space for Lease



**FRANK FRIZALONE**  
(t) +1 631 425 1242  
[frank.frizalone@cushwake.com](mailto:frank.frizalone@cushwake.com)

**THOMAS DELUCA**  
(t) +1 631 425 1237  
[thomas.deluca@cushwake.com](mailto:thomas.deluca@cushwake.com)

**AUSTIN FITZPATRICK**  
(t) +1 631 655 2789  
[austin.fitzpatrick@cushwake.com](mailto:austin.fitzpatrick@cushwake.com)

**NICK GALLIPOLI**  
(t) +1 631 926 2868  
[nicholas.gallipoli@cushwake.com](mailto:nicholas.gallipoli@cushwake.com)

**JOHN GIANNUZZI**  
(t) +1 631 425 1228  
[john.giannuzzi@cushwake.com](mailto:john.giannuzzi@cushwake.com)

**DAVID FRATTAROLI**  
(t) +1 516 859 6396  
[david.frattaroli@cushwake.com](mailto:david.frattaroli@cushwake.com)