



1

ANTARES DRIVE  
NEPEAN, ONTARIO

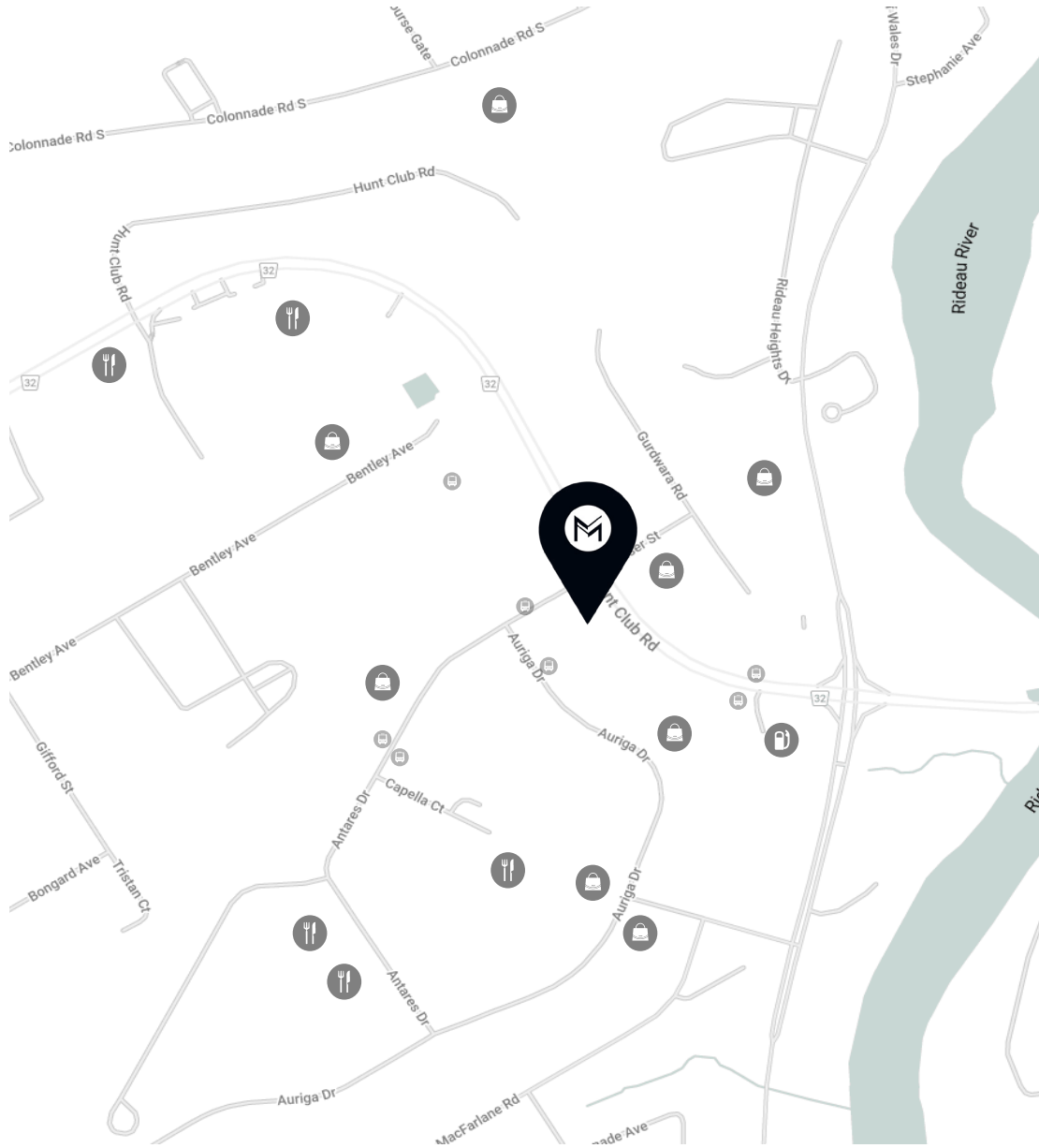
FOR  
LEASE

AVAILABILITIES

Suite 200 = 1,508 sq.ft.

MACH  
PROPERTY

# SURROUNDING AREAS



**MOXIES**

SECOND CUP  
COFFEE CO.



**cora**



**T&T**

**bambu**



*Tim Hortons*



**LCBO**



# 1 ANTARES DRIVE, NEPEAN

NET RENT	CAM	TAXES	TOTAL ADDITIONAL RENT
Please contact agent	\$8.56	\$5.24	\$13.80

FEATURES	
Year built	1990
Building type	Office
Number of floors	5-storey
Floor area	71,527 sq. ft.
Parking space	263 outdoor spaces
Parking ratio	3/1,000 sq. ft.
Fire protection	Sprinkler are located throughout the building
Elevator	Two passenger elevators
Telecom providers	Allstream, Bell, Telus, Terago, Storm Internet, Meteo Optic, Verizon, Skynet
Other equipment	A security system card swipe control access to the building. Intercom system in place. Security cameras.
Public transit	Close to public transit and major arterial routes.

## LEASING INQUIRY

### John Esposito

Director Leasing

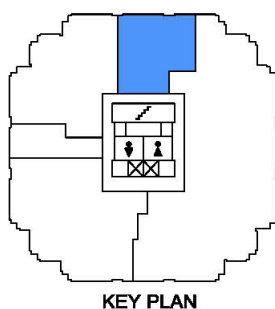
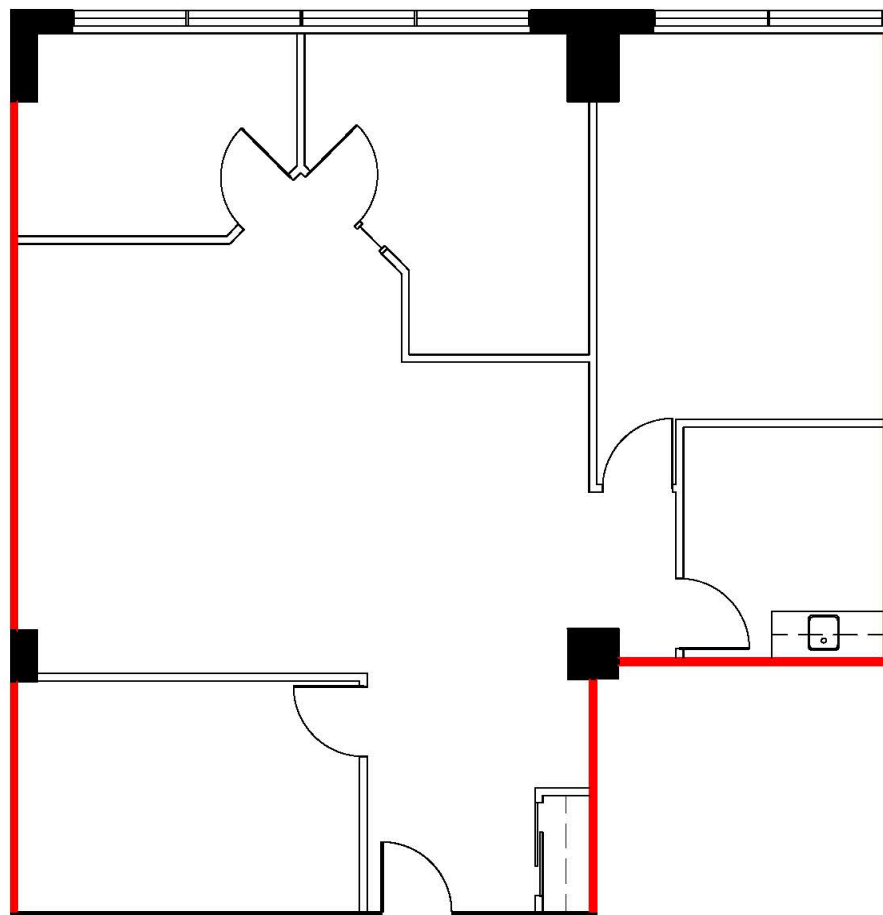
[jesposito@groupemach.com](mailto:jesposito@groupemach.com)

### Max Francischiello, MBA

Senior Vice-President, Leasing

[mfrancischiello@groupemach.com](mailto:mfrancischiello@groupemach.com)

# FLOOR PLAN



KEY PLAN

Suite 200 = 1,508 Sf

# MACH

groupemach.com |  |  | 

CONTACT US  
FOR LEASING OPPORTUNITIES  
**(613) 565-4848**