

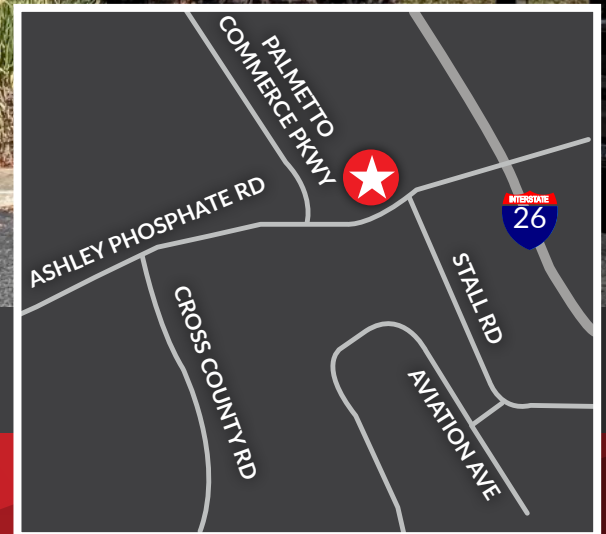


# 150-2,030 SF OFFICE FOR LEASE

2850 ASHLEY PHOSPHATE RD  
NORTH CHARLESTON, SC 29418

*Located just off I-26 at 2850 Ashley Phosphate Road, this bright, well-appointed office space offers a central Charleston location convenient for both tenants and clients.*

*\*\*Click Here for S.C. Agency Relationships Disclosure*



LANDMARK  
ENTERPRISES  
COMMERCIAL REAL ESTATE

Jon Chalfie | Charlotte Fonvielle  
843-345-6000 | 843-860-9509

LANDMARK-ENTERPRISES.COM

**2850 ASHLEY PHOSPHATE RD  
NORTH CHARLESTON, SC 29418**

**150-2,030 SF OFFICE**

# FOR LEASE

**TMS #:** 484-14-00-092

**COUNTY:** CHARLESTON

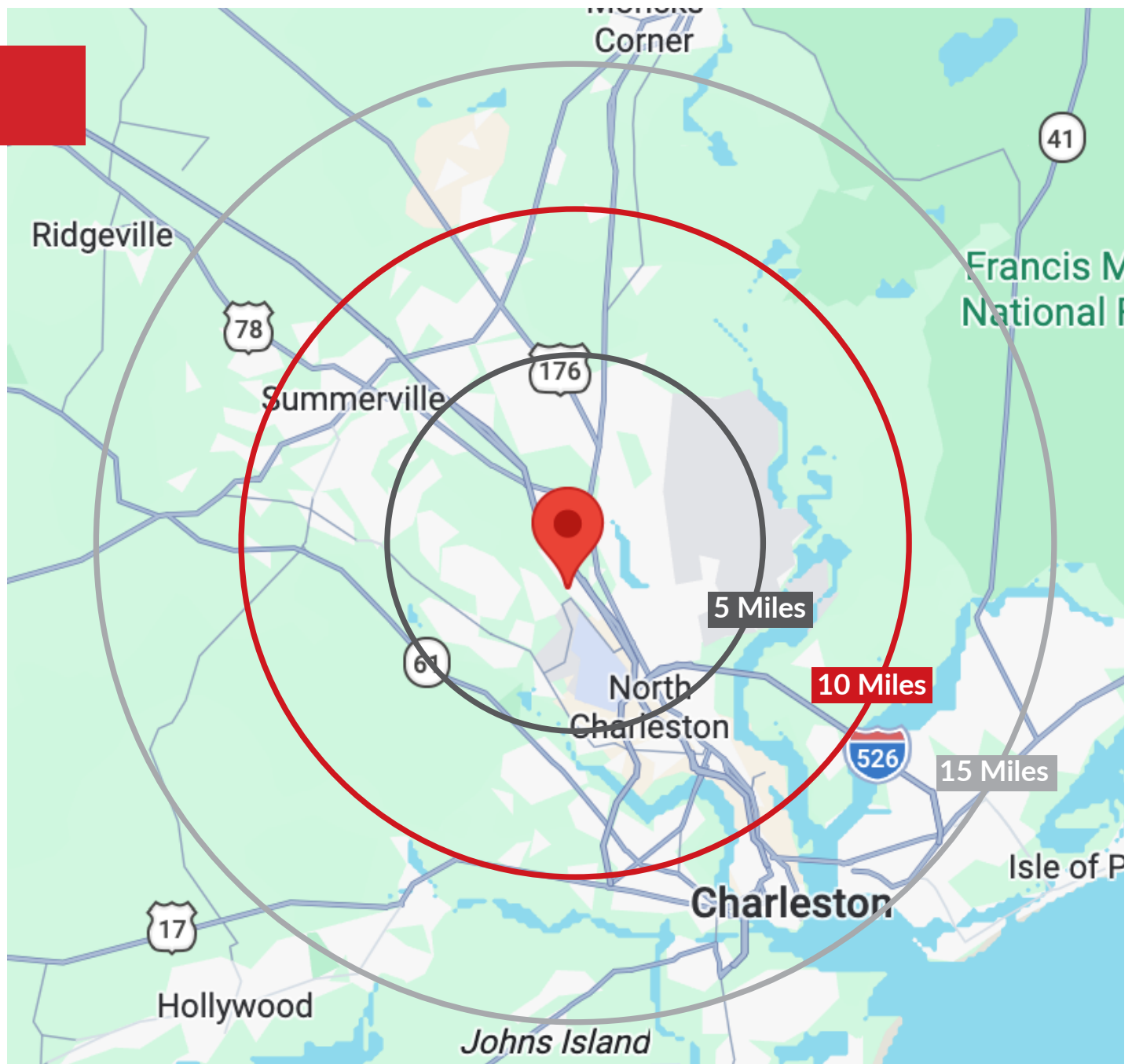
**SF:** FIRST FLOOR:  
2,030 SF SUITE

SECOND FLOOR:  
TWO 150 SF OFFICES

**LEASE PRICE:** FIRST FLOOR:  
\$19.21/SF

SECOND FLOOR:  
\$600/MO PER OFFICE

- Centrally located just off I-26 and surrounded by numerous restaurants, retail, and shopping amenities
- Monument signage, excellent visibility, and ample parking
- Flexible space options including a 2,030 SF main-floor suite plus two private upper-level offices
- Shared access to an on-site conference room and breakroom



**LANDMARK**  
ENTERPRISES  
COMMERCIAL REAL ESTATE

2850 ASHLEY PHOSPHATE RD  
NORTH CHARLESTON, SC 29418  
[www.landmark-enterprises.com](http://www.landmark-enterprises.com)



WELLS FARGO

TRUIST

LOWE'S

Hampton  
by Hilton

First Citizens Bank

Office DEPOT

NORTHWOODS MALL

CAROLINA RETAILERS

Holiday Inn Express

ups THE UPS STORE

Lodi

Cracker Barrel  
OLD COUNTRY STORE

target

NAVY FEDERAL Credit Union

TD Bank

INTERSTATE 26

7-ELEVEN

INTERSTATE 26

ASHLEY PHOSPHATE ROAD

CALIBER COLLISION

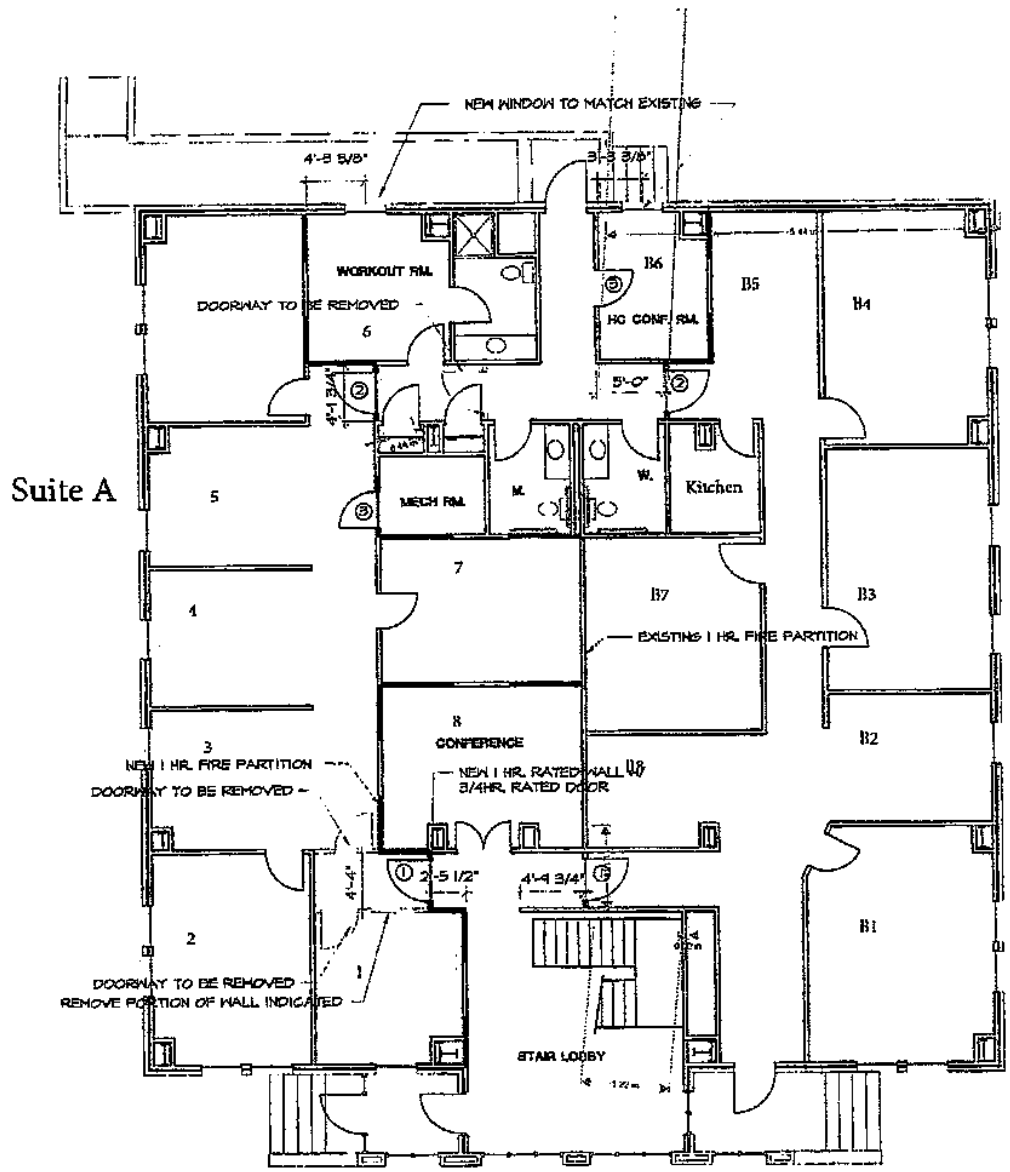






LANDMARK  
ENTERPRISES  
COMMERCIAL REAL ESTATE

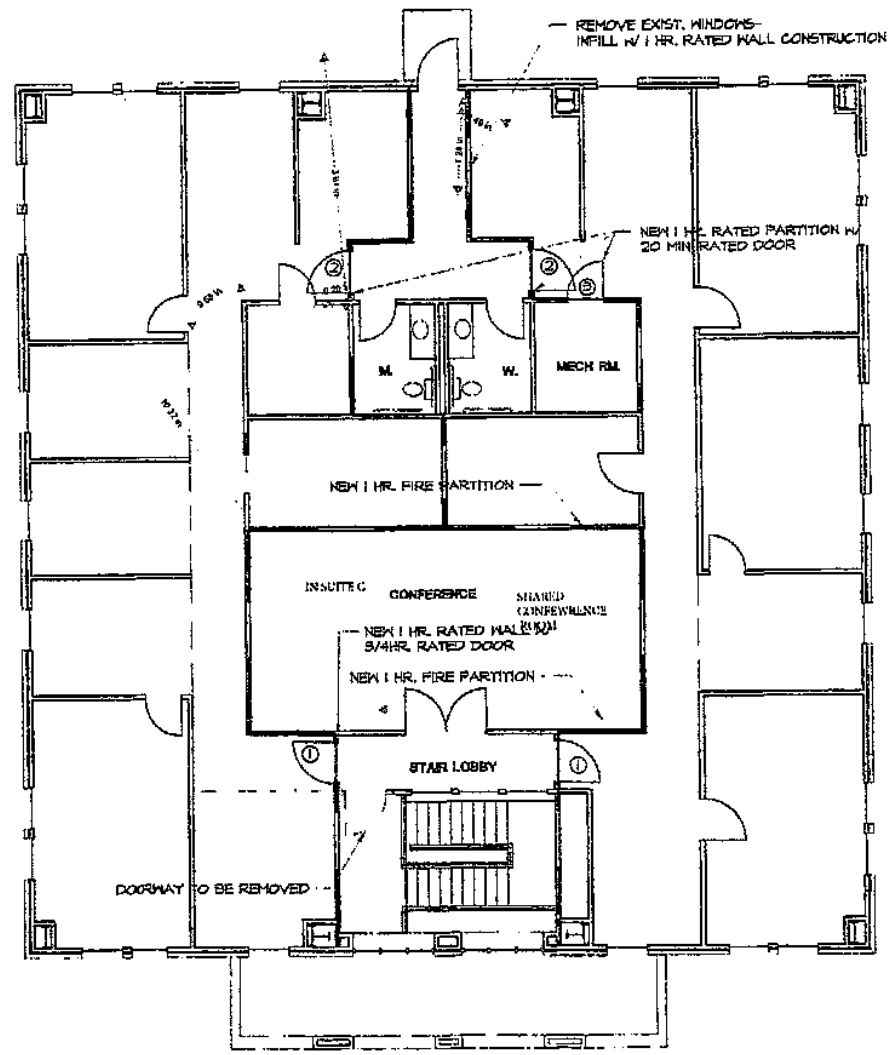
2850 ASHLEY PHOSPHATE RD  
NORTH CHARLESTON, SC 29418  
[www.landmark-enterprises.com](http://www.landmark-enterprises.com)



Suite A

**FIRST FLOOR PLAN**  
SCALE: 1/8" = 1'-0"

Suite B



**SECOND FLOOR PLAN**  
SCALE: 1/8" = 1'-0"



150-2,030 SF OFFICE  
**FOR LEASE**

2850 ASHLEY PHOSPHATE RD  
NORTH CHARLESTON, SC 29418

[www.landmark-enterprises.com](http://www.landmark-enterprises.com)



**Jon Chalfie**  
VP of Brokerage  
843-345-6000



**Charlotte Fonvielle**  
Commercial Associate  
843-860-9509

**CONTACT US TODAY TO LEARN MORE!!**

\*We obtained the information above from sources we believe to be reliable. However, we have not verified its accuracy and make no guarantee, warranty or representation about it. It is submitted subject to the possibility of errors, omissions, change of price, rental or other conditions, prior sale, lease or financing, or withdrawal without notice. We include projections, opinions, assumptions or estimates for example only, and they may not represent current or future performance of the property. You and your tax and legal advisors should conduct your own investigation of the property and transaction.



**LANDMARK**  
ENTERPRISES  
COMMERCIAL REAL ESTATE