

34650 N. US HWY 19

PALM HARBOR, FL



Three-story professional office building with flexible suite options ranging from 1,688 SF to 6,444 SF, providing tailored solutions to suit your unique needs

PROPERTY HIGHLIGHTS



2,412 SF - 6,444 SF
suites available



Open Floor
Plan



Outside Terraces
available



Excellent US
Hwy 19 Location



Parking:
4.3:1000



ADT:
76,000

LISTING AGENTS

Larry Brown

Email: lbrown@thekraussorg.com

Office: (813) 885-5656

Cell: (813) 787-9637

Paul Peluso

Email: nco@tampabay.rr.com

Office: (813) 885-5656

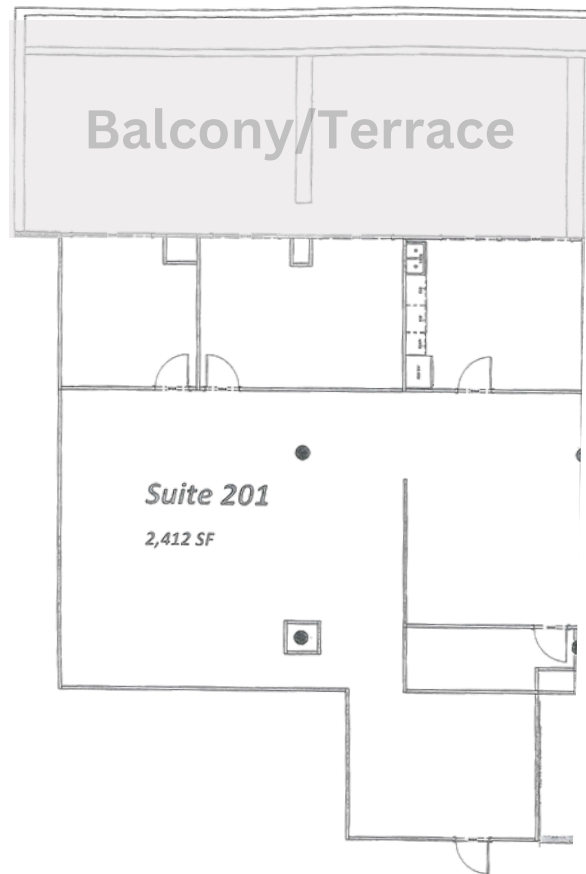
Cell: (727) 638-9559

THE KRAUSS ORGANIZATION, INC.
Commercial Real Estate Services • Since 1952
711 North Sherrill Street Tampa, FL 33609

AVAILABLE SPACE

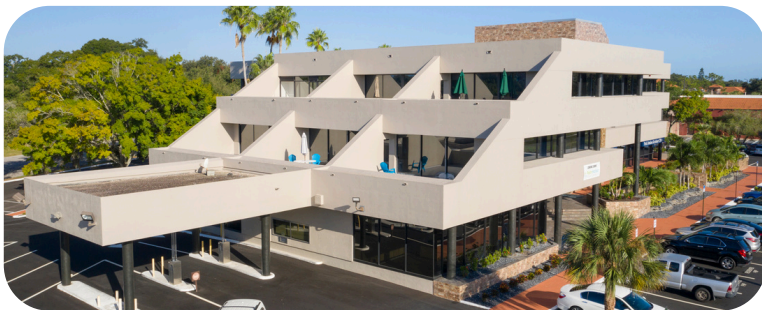
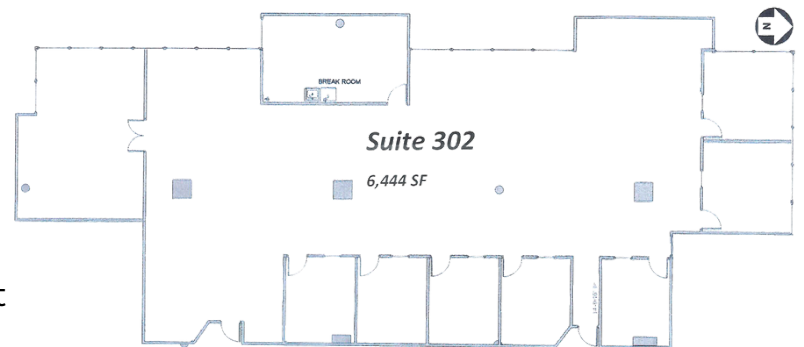
Suite 201

- 2,412 SF
- Balcony/Terrace
- Up to 4,482 SF with contiguous space

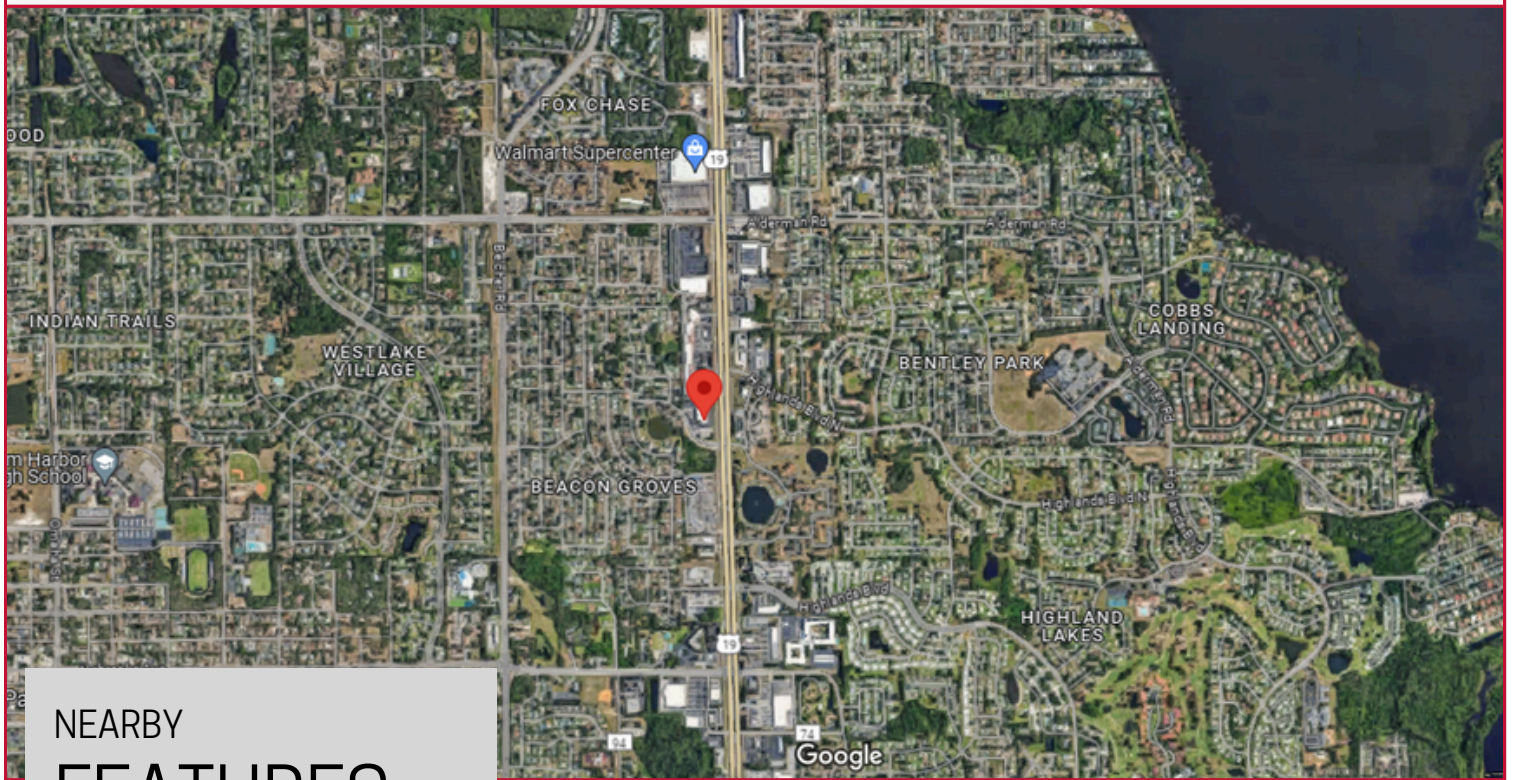


Suite 302

- 6,444 SF
- Divisible to accommodate any size Tenant



NEIGHBORHOOD



NEARBY FEATURES

SPROUTS[®]
FARMERS MARKET



Walgreens



LA | FITNESS [®]

Walmart 



The UPS Store[™]

For Additional Information
Please Contact :

Larry Brown

Email: lbrown@thekraussorg.com

Office: (813) 885-5656

Cell: (813) 787-9637

Paul Peluso

Email: nco@tampabay.rr.com

Office: (813) 885-5656

Cell: (727) 638-9559

THE KRAUSS ORGANIZATION, INC.
Commercial Real Estate Services • Since 1952