

# 101 @ Trimble Office Park

SANTA CLARA, CA

1,601-6,445 SF Available



## MULTIPLE MARKET READY SUITES AVAILABLE

Address	Suite	Size
3100 De La Cruz Blvd	120	6,445 SF
	206	2,459 SF
	208	4,466 SF
	210	2,535 SF
3130 De La Cruz Blvd	211	1,713 SF
3140 De La Cruz Blvd	110	1,929 SF
	120	1,902 SF
3150 De La Cruz Blvd	106	1,706 SF
3160 De La Cruz Blvd	101	2,974 SF
3170 De La Cruz Blvd	105	1,601 SF
3170 De La Cruz Blvd - H2	119	1,625 SF
3180 De La Cruz Blvd	130	5,806 SF
	210	3,363 SF
	280	4,166 SF

DION CAMPISI, sior  
 +1 408 242 6187  
 dion.campisi@colliers.com  
 CA License No. 01321946



# Building Project Features

## Highlights

- ±190,000 SF
- 10 building office/retail project
- Internet Service Providers include Comcast, AT&T, and WiLine
- AT&T has fiber to all buildings
- Exterior signage available
- Exterior and interior improvements underway
- 3/1,000 free parking

## Location

- Desirable Santa Clara location
- Levi's Stadium: 4 miles
- Freeway exposure
- Immediate access to Highway 101
- Close access to Highways 87, 237,880 and 280
- San Jose International Airport: 3 miles
- Santa Clara Caltrain Station: 3 miles

## Amenities

- Free conference facilities
- Showers located on the 2nd floor of the 3100 building
- Eastern Barbecue and Lily Sandwiches & Coffee on-site
- On-site dry cleaners
- On-site property management
- FedEx and UPS drop boxes
- Rivermark Village: 1 mile
- Bay Club: 3 miles
- Mercado Santa Clara: 3 miles



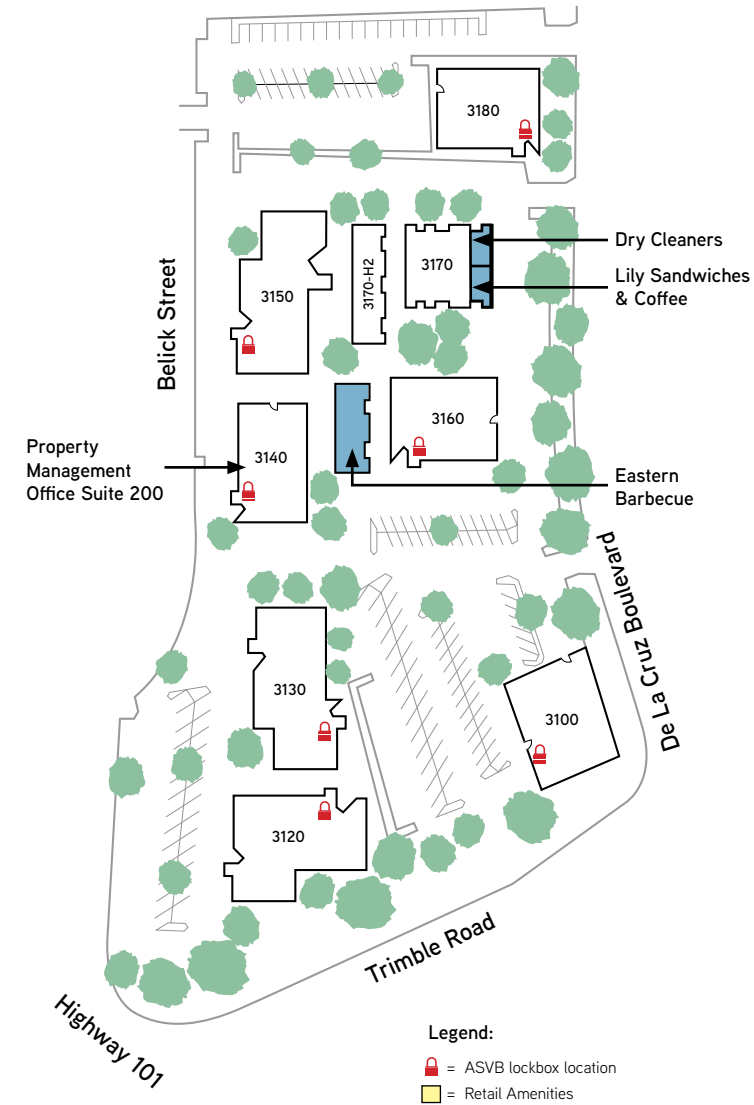
DION CAMPISI, SIOR  
+1 408 242 6187  
dion.campisi@colliers.com  
CA License No. 01321946

101 @ Trimble Office Park  
SANTA CLARA, CA



# Available Space Summary

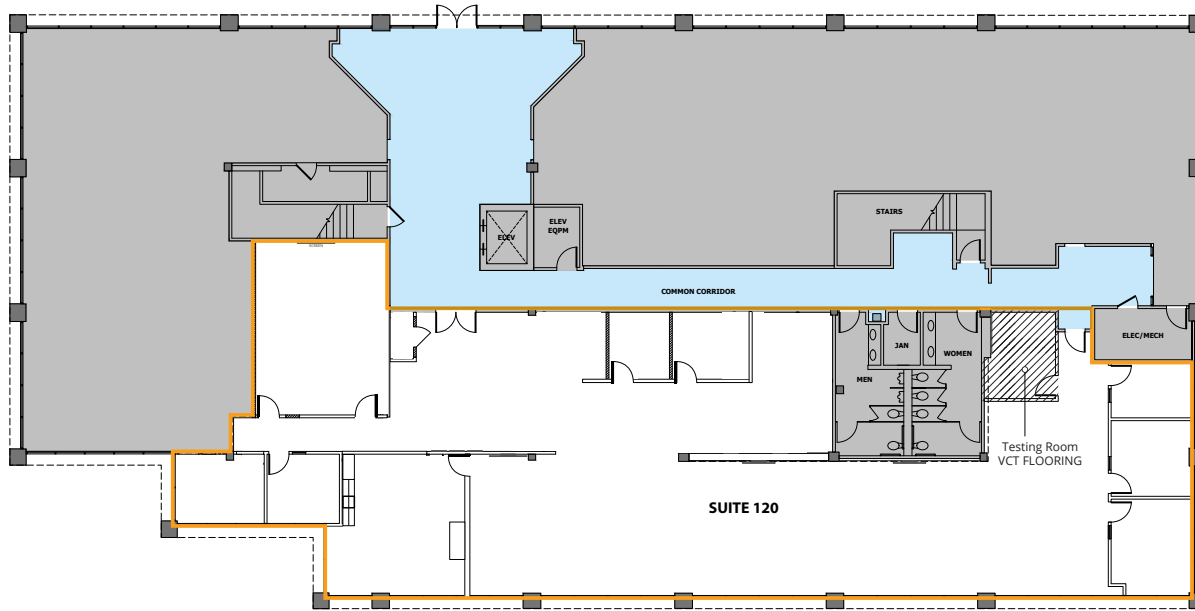
Address	Suite	Size	Comments	Date Available	Virtual Tour
3100 De La Cruz Blvd	120	6,445 SF	<b>Market Ready Suite!</b> 10 private offices, 1 conference room, storage room, IT room, testing room and open office. Plug & Play with furniture	Now	
	206	2,459	3 private offices and 1 conference room Plug & Play	Now	
	208	4,466	5 private offices, 1 conference room, kitchen/break area, server room, storage room and open office space.	Now	
	210	2,535 SF	<b>Market Ready Suite!</b> 4 private offices, 2 conference rooms, breakroom	Now	
3130 De La Cruz Blvd	211	1,713 SF	Open office area	Now	
3140 De La Cruz Blvd	110	1,929	1 private office, 1 breakroom, 1 lab with VCT flooring, reception area and open office	Now	
	120	1,902	<b>Market Ready Suite!</b> Conference room and balanced open office	Now	
3150 De La Cruz Blvd	106	1,706 SF	2 private offices, break area and open area	Now	
3160 De La Cruz Blvd	101	2,974 SF	5 private offices and open office	Now	
3170 De La Cruz Blvd	105	1,601 SF	4 private offices, kitchen, storage room, private restroom, and open office	9/01/2025	
3170 De La Cruz Blvd - H2	119	1,625 SF	4 private offices, private restroom, and open office space	Now	
3180 De La Cruz Blvd	130	5,806 SF	4 private offices, 1 large conference room, 1 breakroom, 1 IT room, 1 storage room, 3 labs with VCT flooring, reception area and open office.	Now	
	210	3,363 SF	6 private offices, 2 conference rooms, lab and break area	Now	
	280	4,166 SF	2 conference rooms, lab and break area Market Ready suite		




101 @ Trimble Office Park  
SANTA CLARA, CA



# 3100 De La Cruz Boulevard




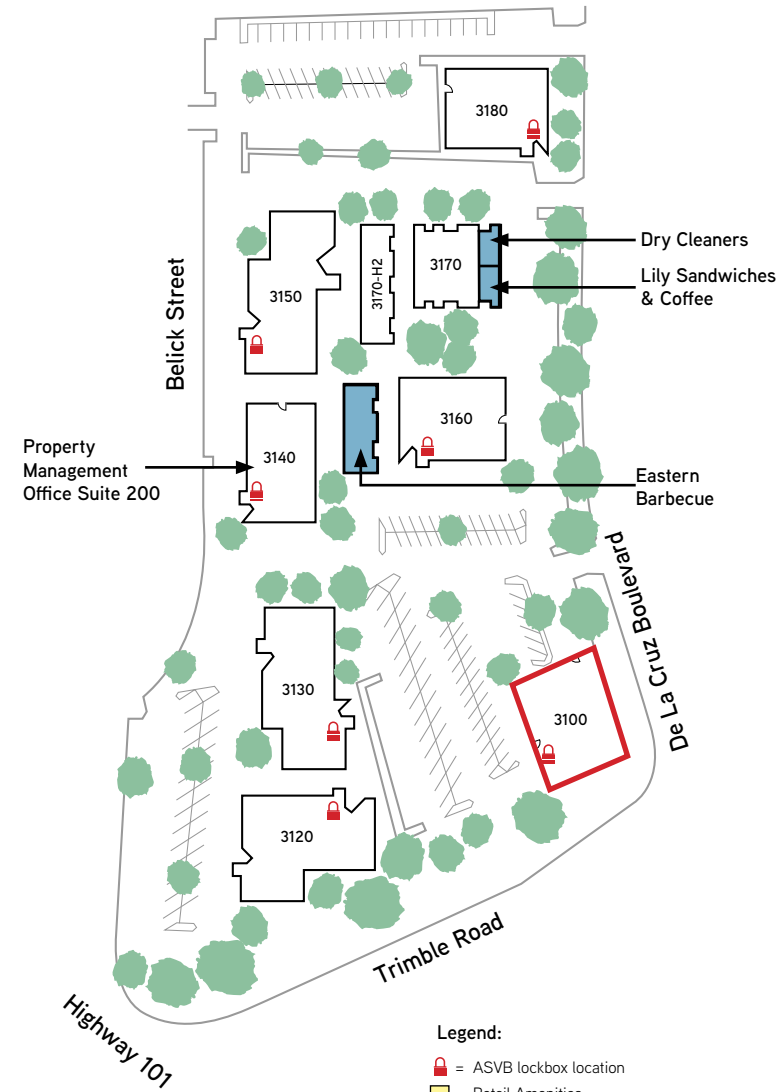
 = 6,445 SF (Suite 120)



**3100 De La Cruz Blvd**  
**Suite 120**  
 6,445 SF

Testing room approx. 120 sq ft.  
 No dedicated AC in the server room.  
 Office area: two 5-ton split systems.



 = Common Area     = Leased



Legend:  
 = ASVB lockbox location  
 = Retail Amenities

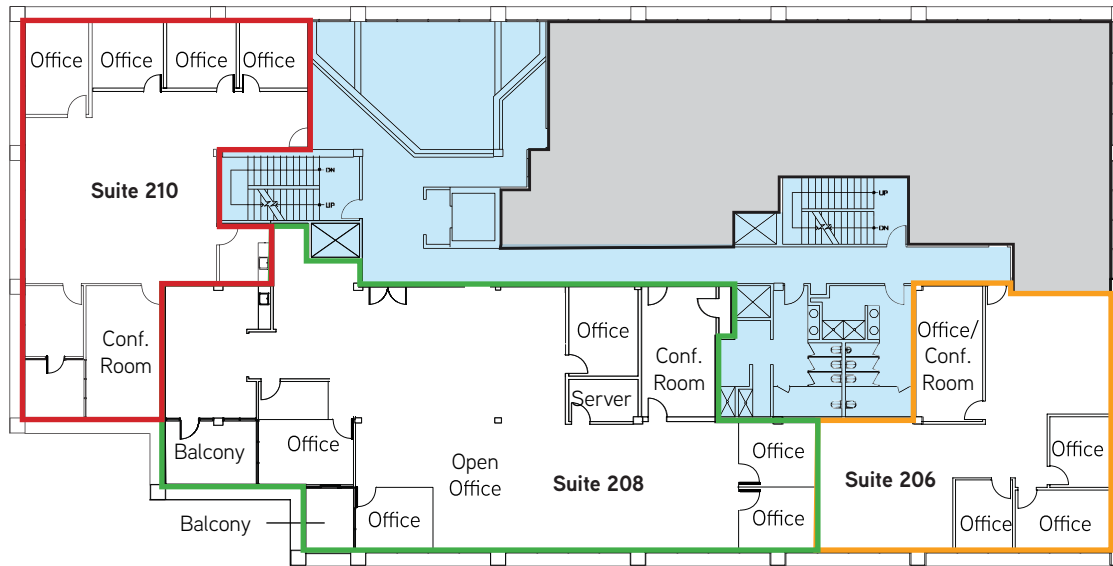
DION CAMPISI, SIOR  
 +1 408 242 6187  
 dion.campisi@colliers.com  
 CA License No. 01321946

**101 @ Trimble Office Park**  
 SANTA CLARA, CA



# 3100 De La Cruz Boulevard

**3100 De La Cruz Blvd**  
**Suite 210**  
 2,535 SF

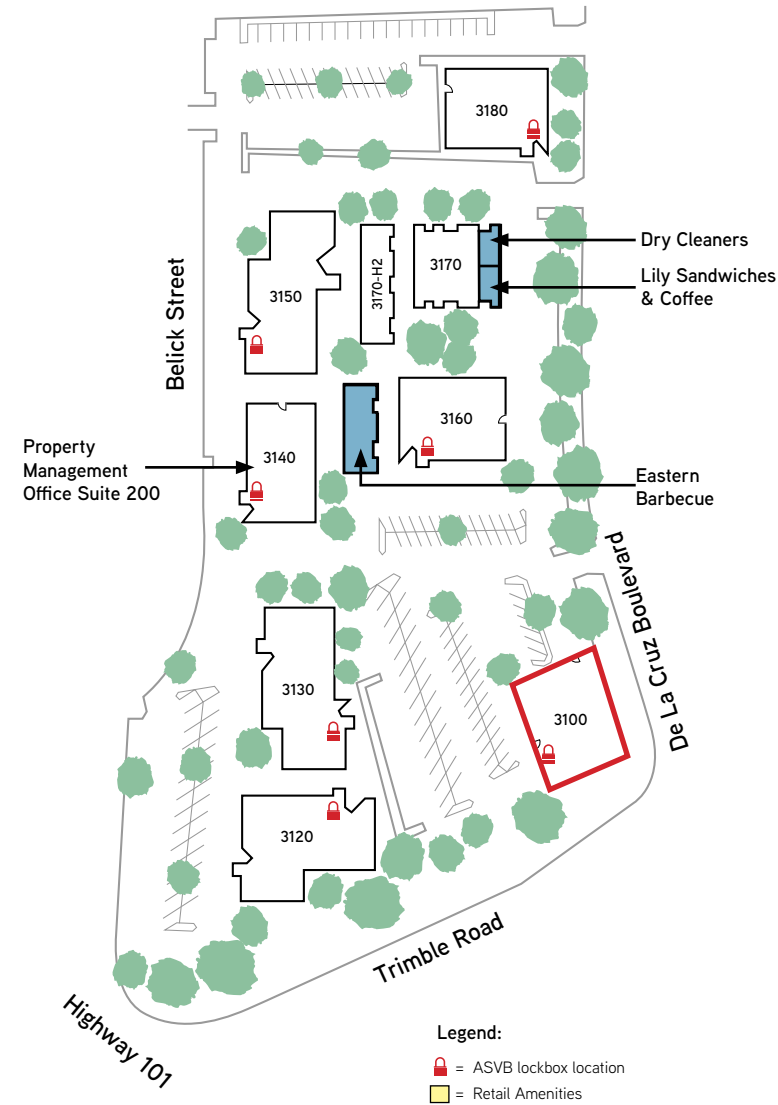


- = 2,459 SF (Suite 206)
- = 4,466 SF (Suite 208)
- = 2,535 SF (Suite 201)

**3100 De La Cruz Blvd**  
**Suite 208**  
 4,466 SF

**3100 De La Cruz Blvd**  
**Suite 206**  
 2,459 SF

= Common Area     = Leased



**Legend:**  
 = ASVB lockbox location  
 = Retail Amenities

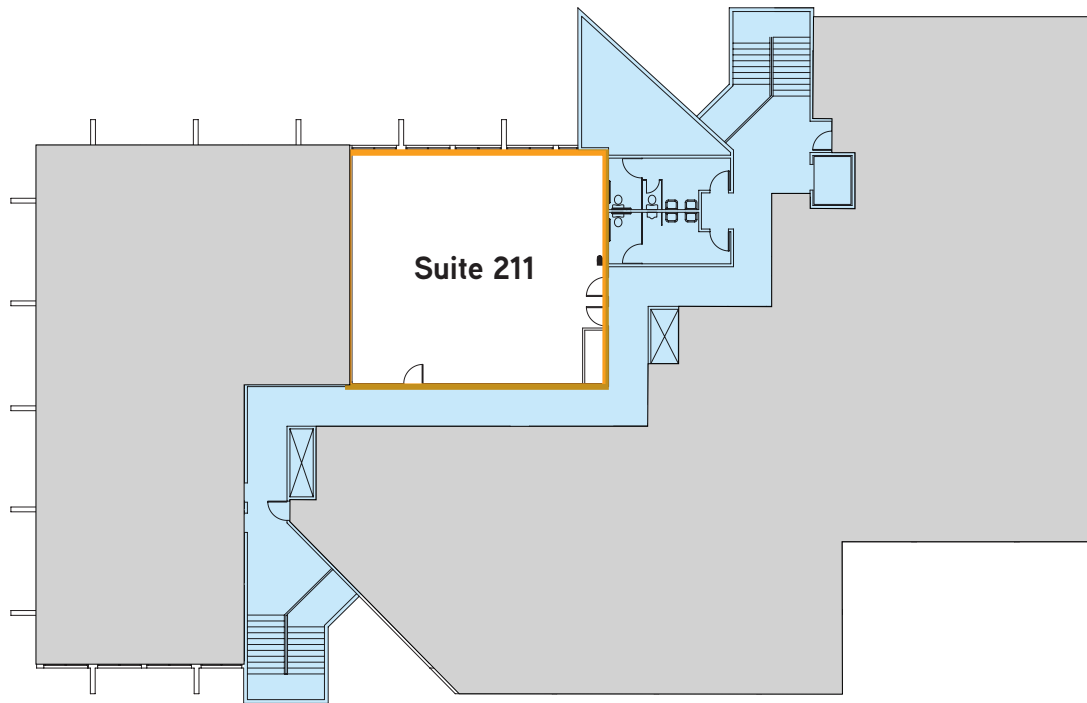
DION CAMPISI, SIOR  
 +1 408 242 6187  
 dion.campisi@colliers.com  
 CA License No. 01321946

**101 @ Trimble Office Park**  
 SANTA CLARA, CA



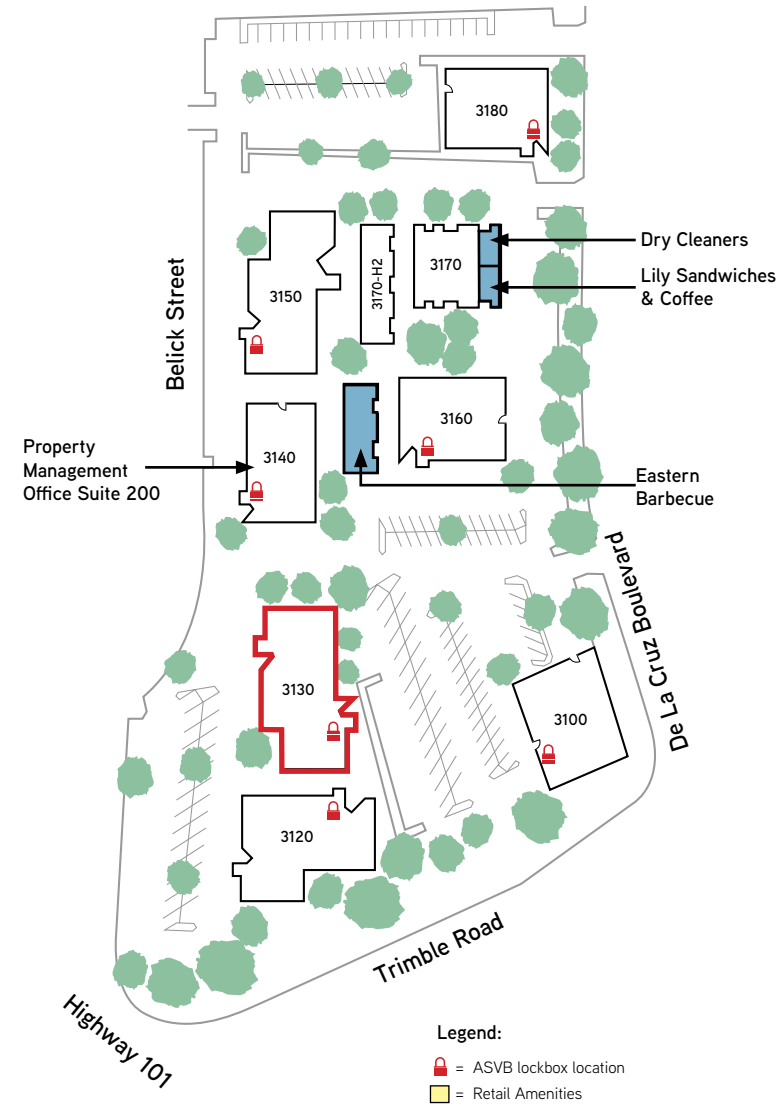
# 3130 De La Cruz Boulevard

3130 De La Cruz Blvd  
Suite 211  
1,713 SF



= 1,713 SF (Suite 211)

= Common Area     = Leased

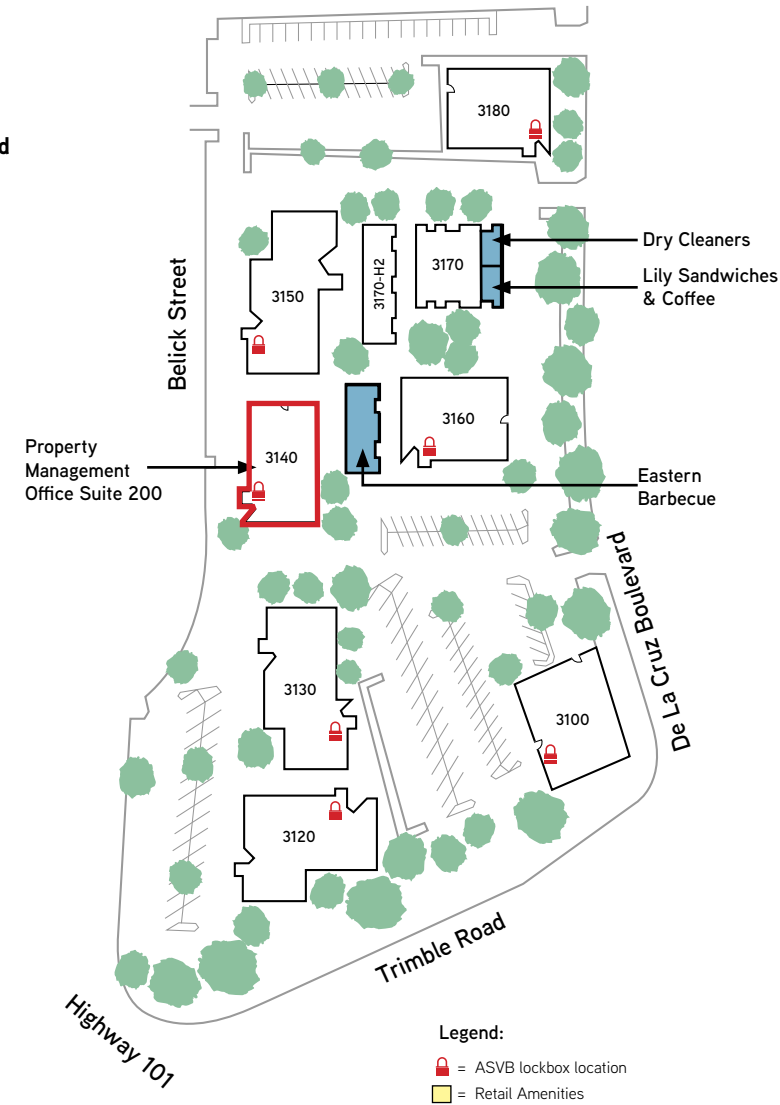
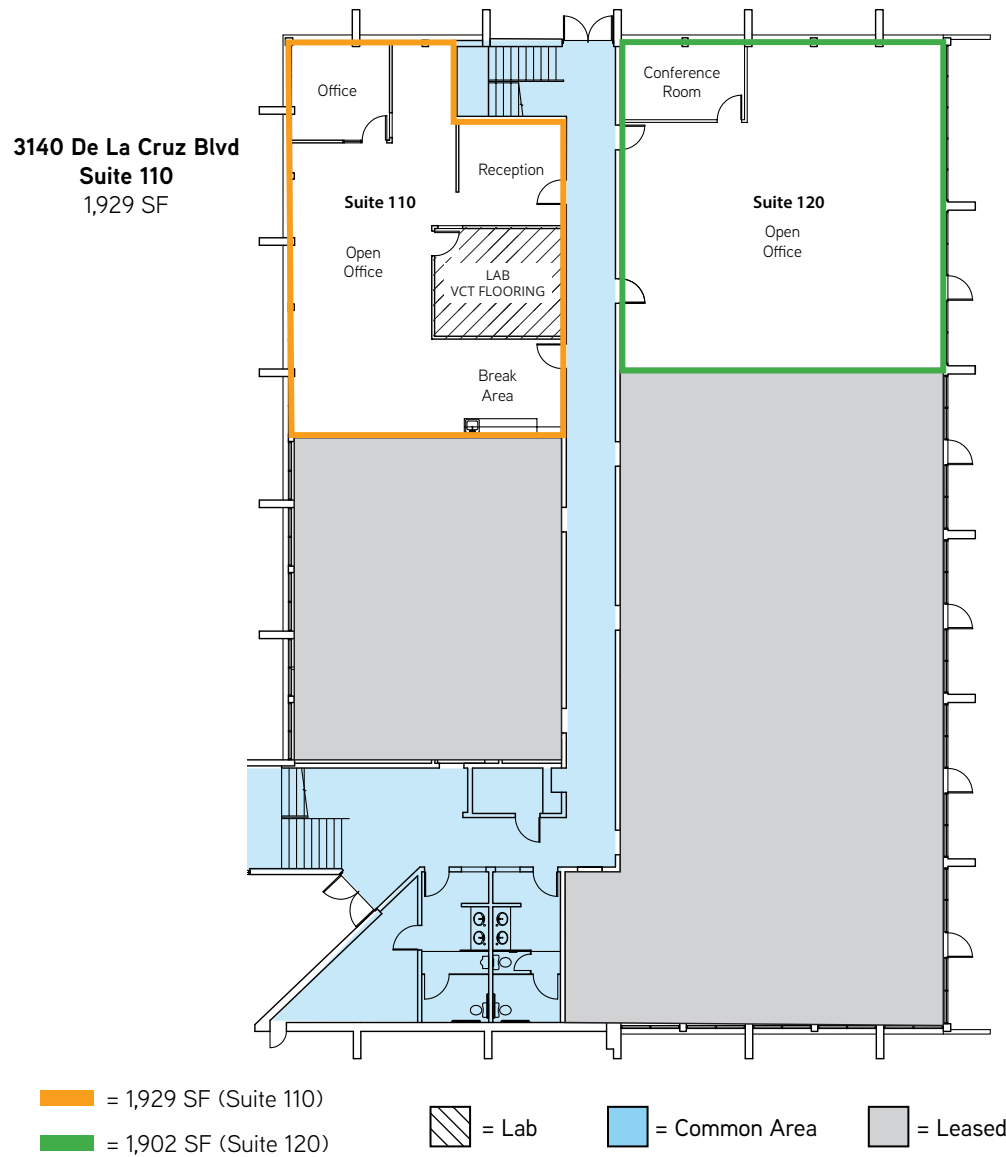


DION CAMPISI, SIOR  
+1 408 242 6187  
dion.campisi@colliers.com  
CA License No. 01321946

101 @ Trimble Office Park  
SANTA CLARA, CA



# 3140 De La Cruz Boulevard



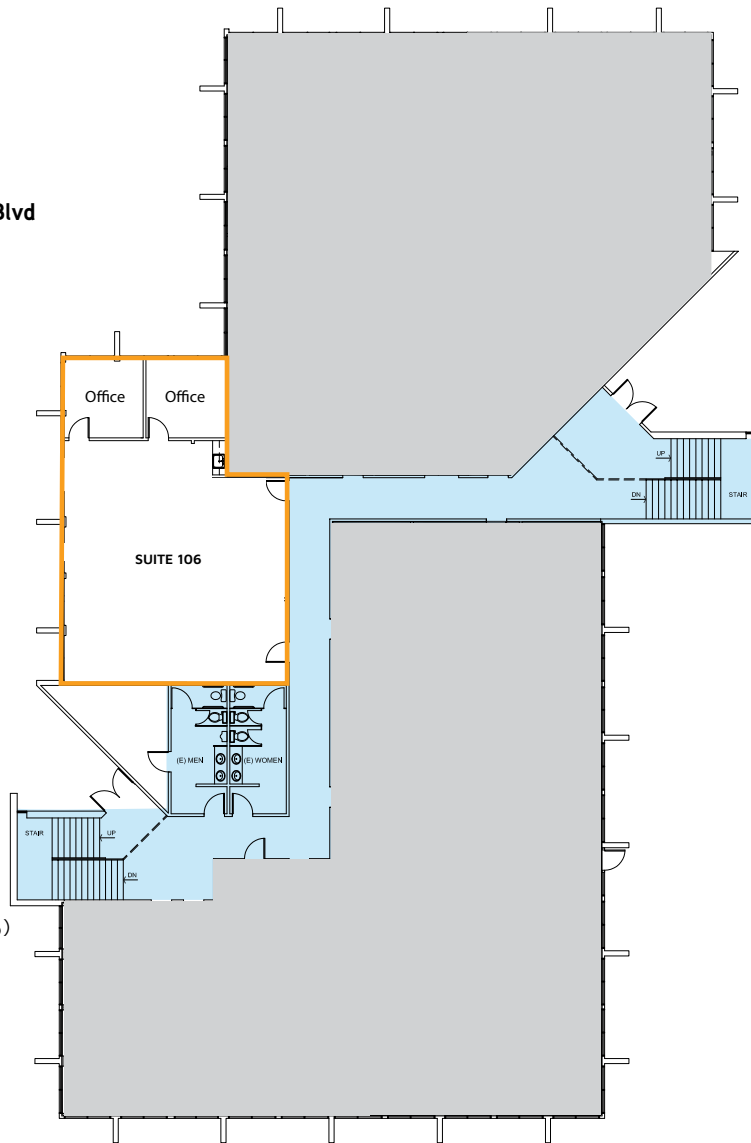
DION CAMPISI, SIOR  
 +1 408 242 6187  
 dion.campisi@colliers.com  
 CA License No. 01321946

**101 @ Trimble Office Park**  
 SANTA CLARA, CA



# 3150 De La Cruz Boulevard

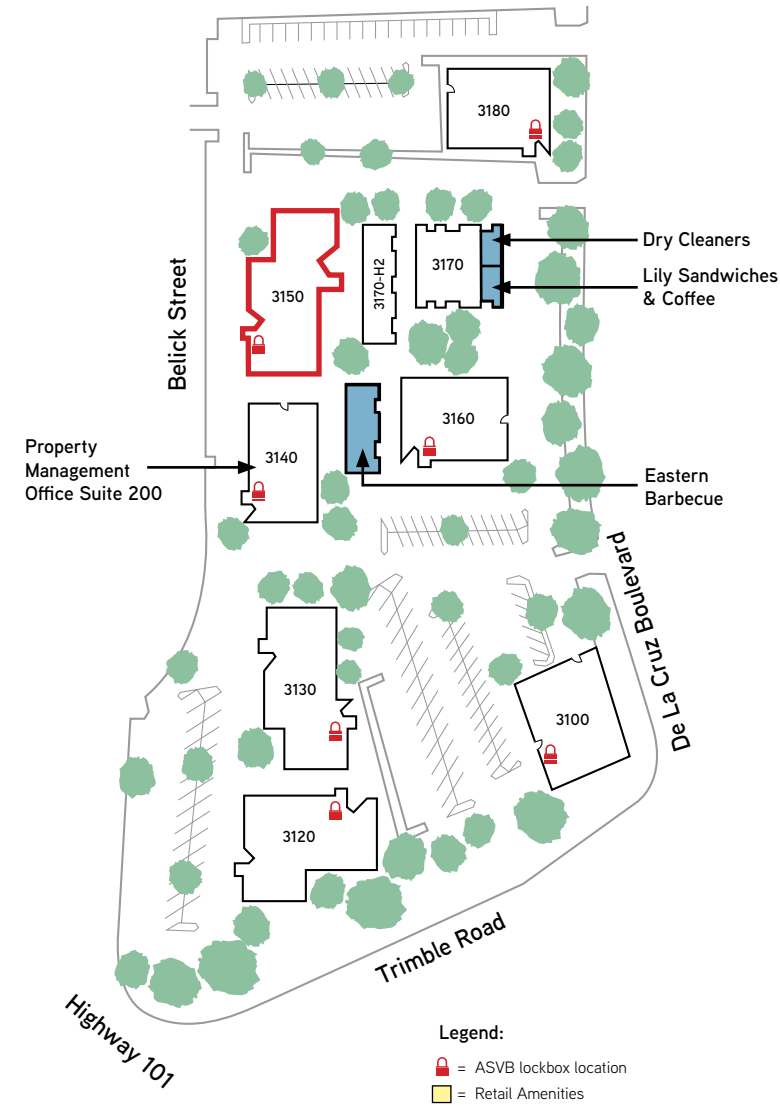
3150 De La Cruz Blvd  
Suite 106  
1,706 SF



= 1,706 SF (Suite 106)

= Common Area

= Leased

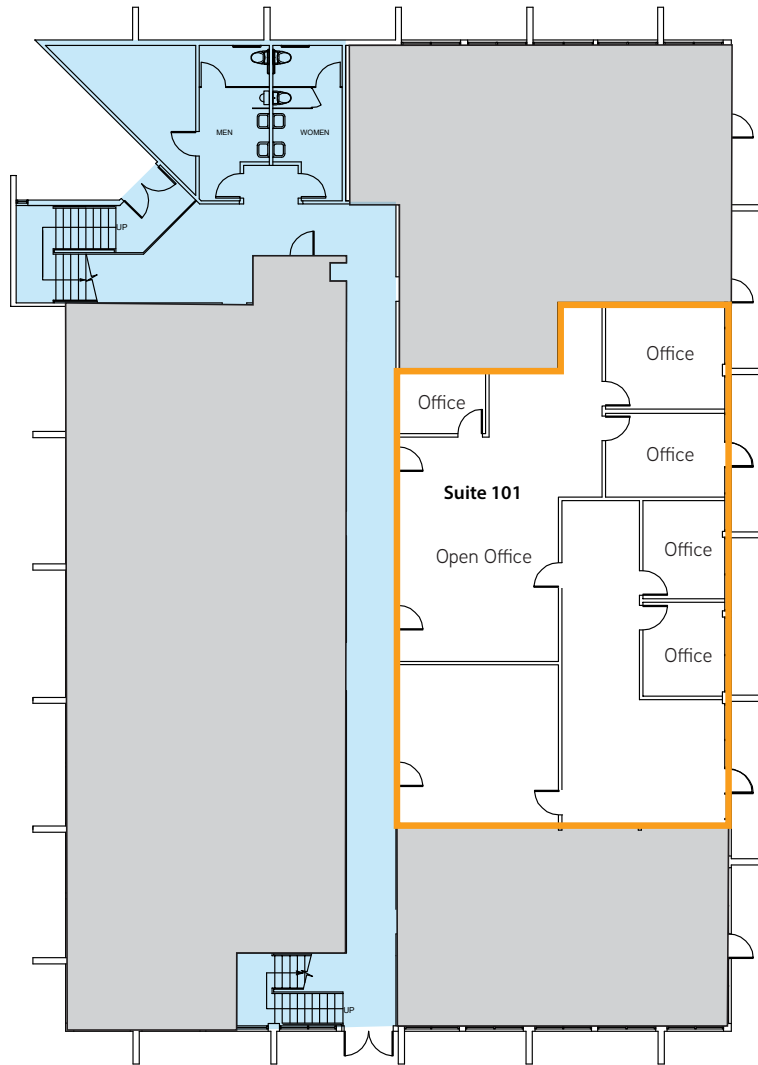


DION CAMPISI, SIOR  
+1 408 242 6187  
dion.campisi@colliers.com  
CA License No. 01321946

101 @ Trimble Office Park  
SANTA CLARA, CA

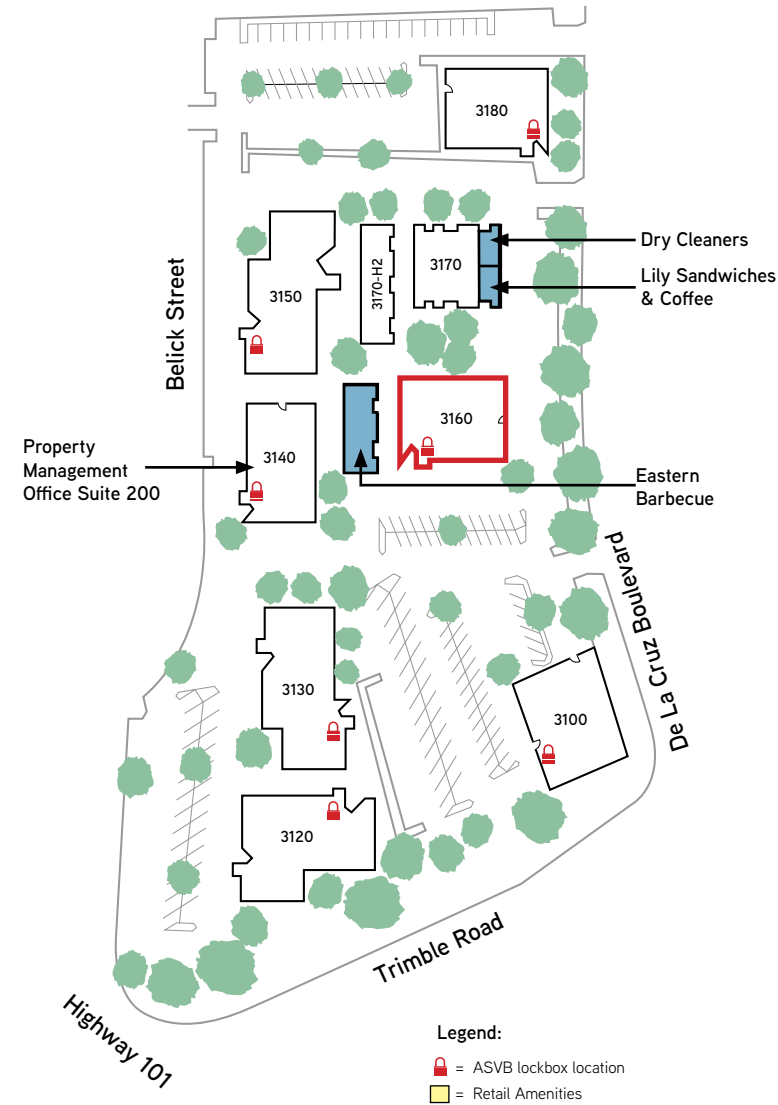


# 3160 De La Cruz Boulevard



**3160 De La Cruz Blvd  
Suite 101  
2,974 SF**

- = 2,974 SF (Suite 101)
- = Common Area
- = Leased

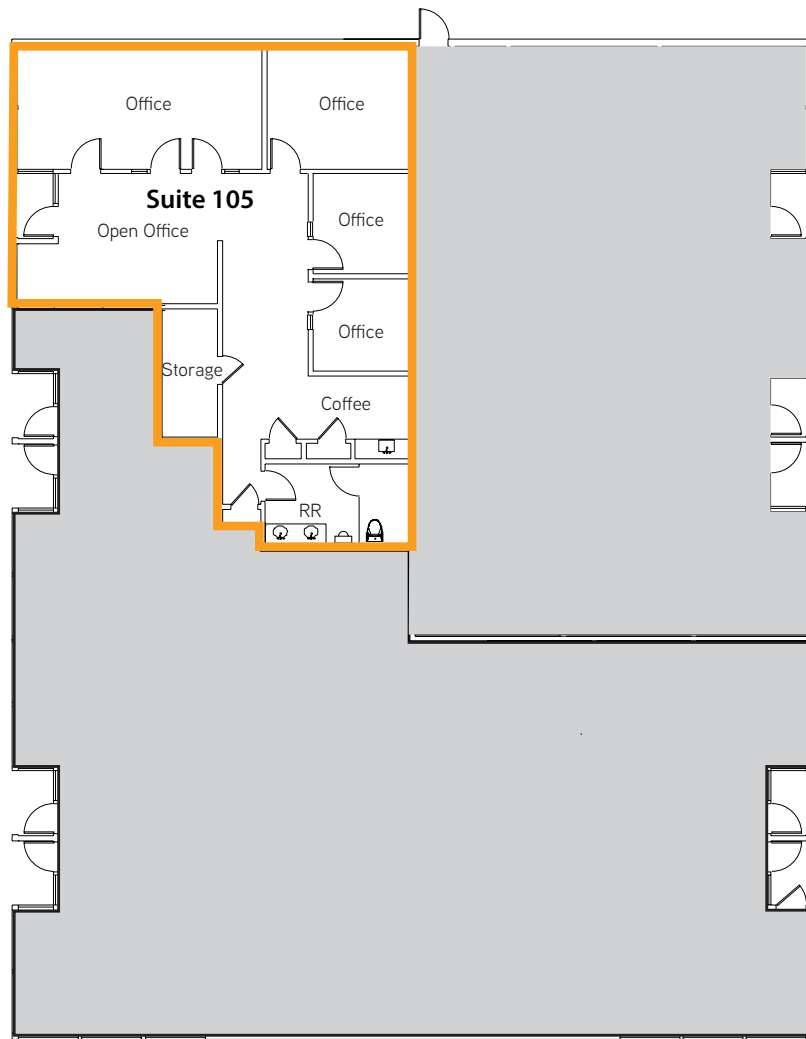


DION CAMPISI, SIOR  
+1 408 242 6187  
dion.campisi@colliers.com  
CA License No. 01321946

**101 @ Trimble Office Park**  
SANTA CLARA, CA

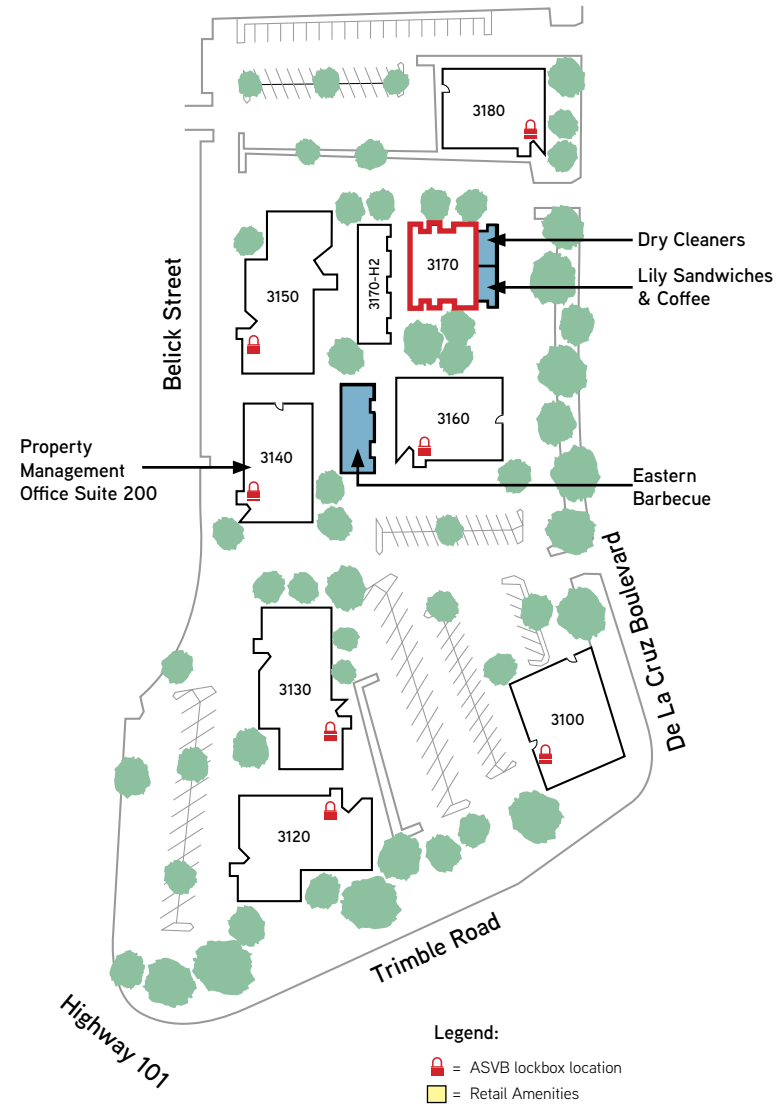


# 3170 De La Cruz Boulevard



**3170 De La Cruz Blvd  
Suite 105  
1,601 SF**

- = 1,601 SF (Suite 105)
- = Common Area
- = Leased

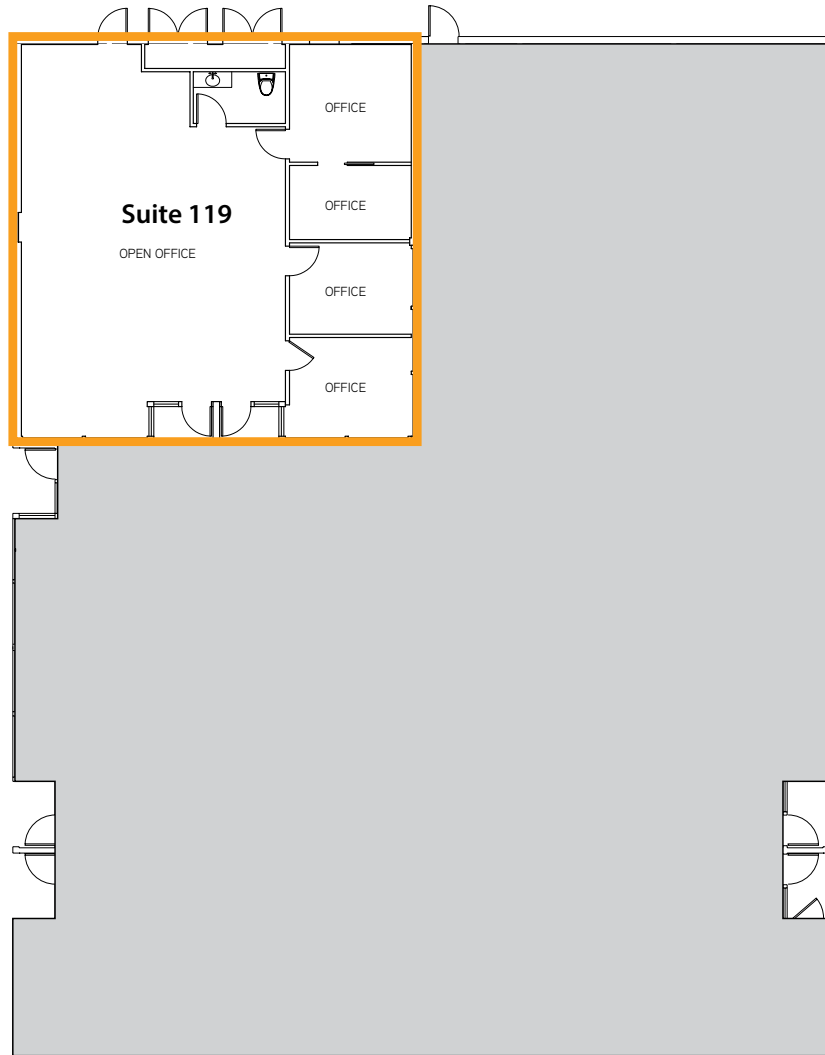


DION CAMPISI, SIOR  
+1 408 242 6187  
dion.campisi@colliers.com  
CA License No. 01321946

**101 @ Trimble Office Park**  
SANTA CLARA, CA



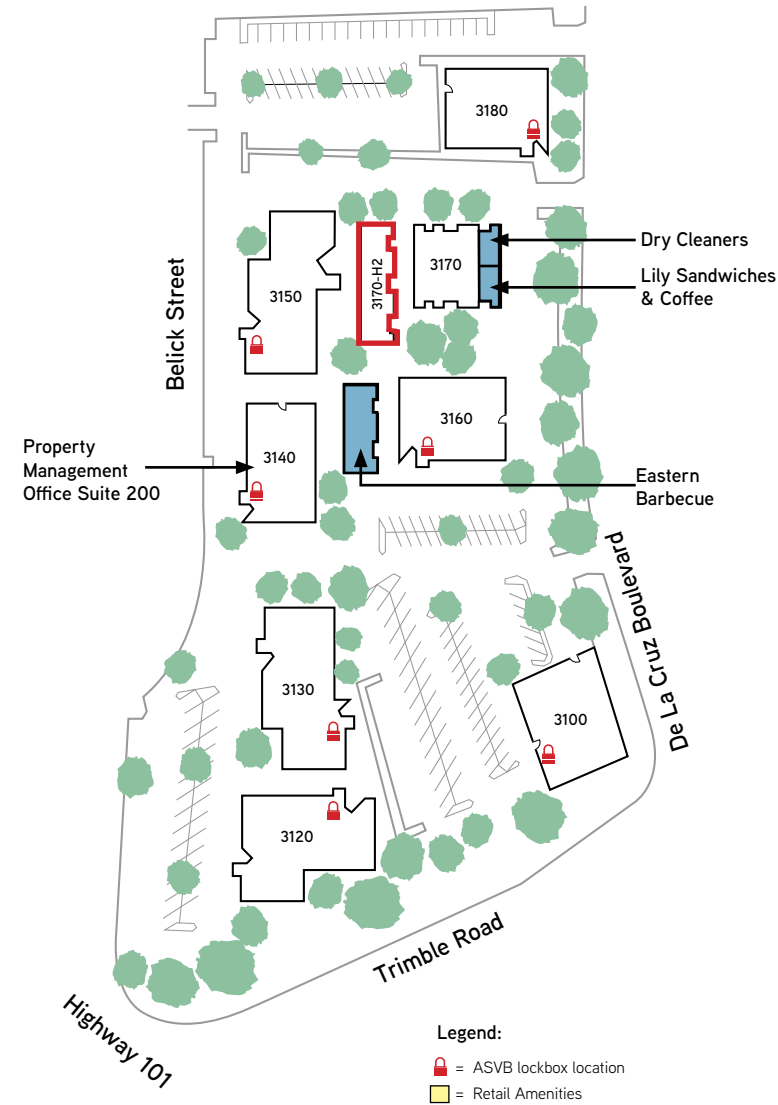
# 3170 De La Cruz Boulevard



**3170 De La Cruz Blvd - H2**  
**Suite 119**  
1,625 SF

■ = 1,625 SF (Suite 119)

■ = Leased

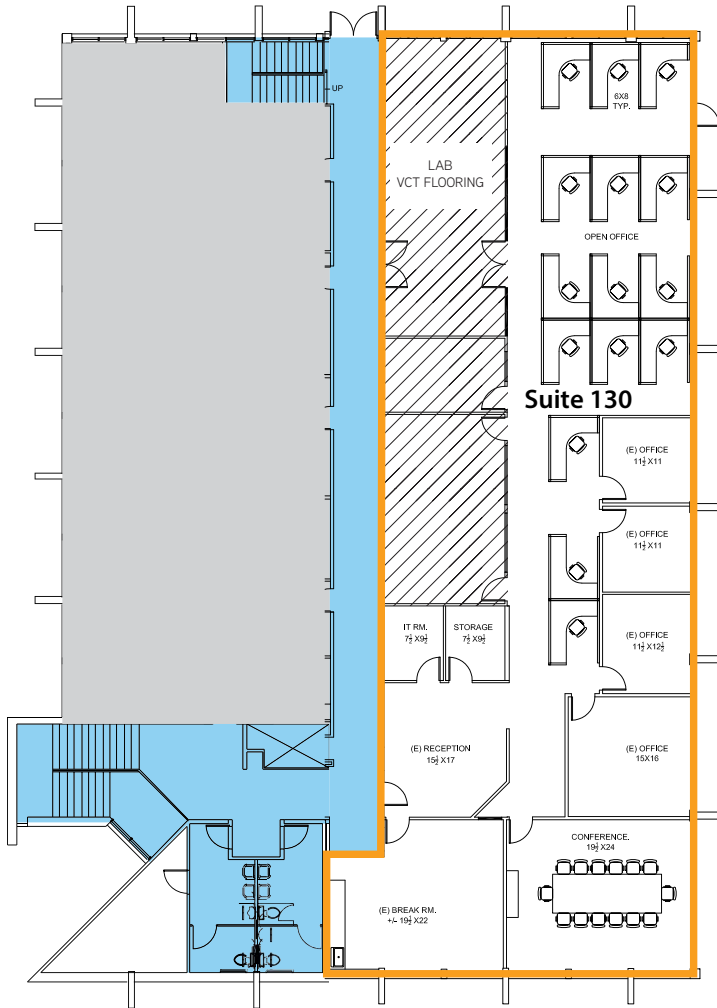


DION CAMPISI, SIOR  
+1 408 242 6187  
dion.campisi@colliers.com  
CA License No. 01321946

**101 @ Trimble Office Park**  
SANTA CLARA, CA




# 3180 De La Cruz Boulevard




**3180 De La Cruz Blvd  
Suite 130**  
5,806 SF

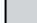
Lab, approx. 604 sq ft.  
3-ton ductless split system.  
Office area: 15-ton RTU/AC.

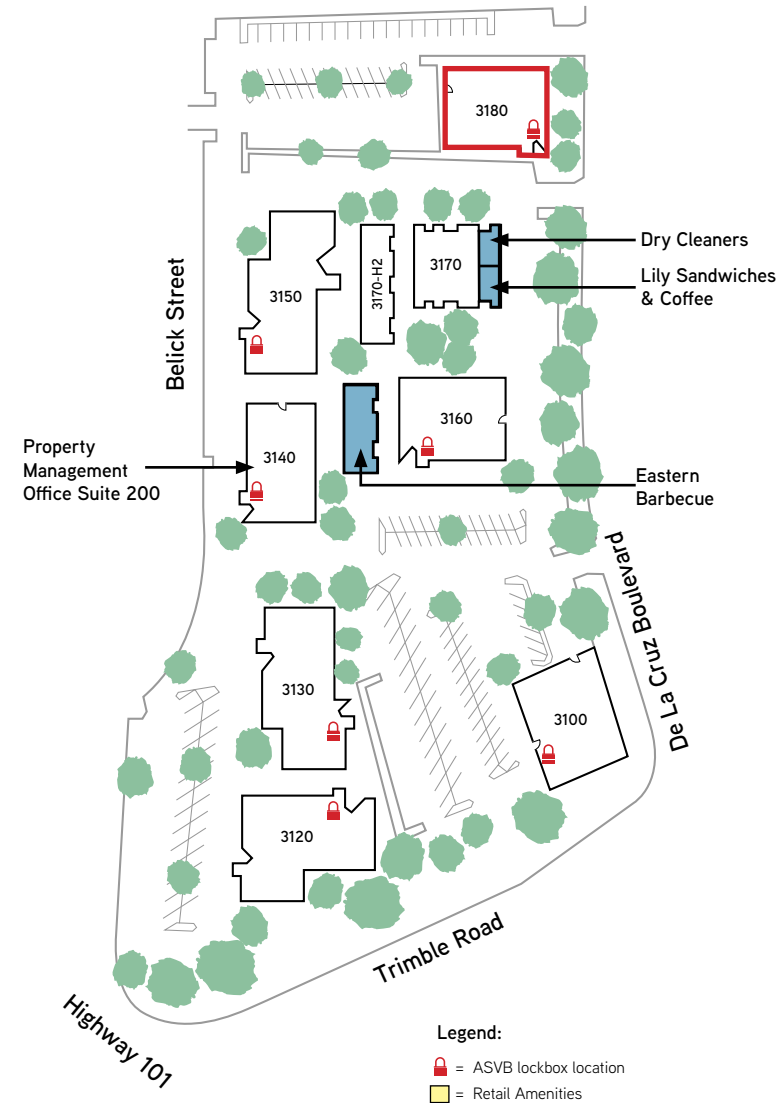


 = 5,806 SF (Suite 130)



 = Common Area

 = Lab

 = Leased



Legend:

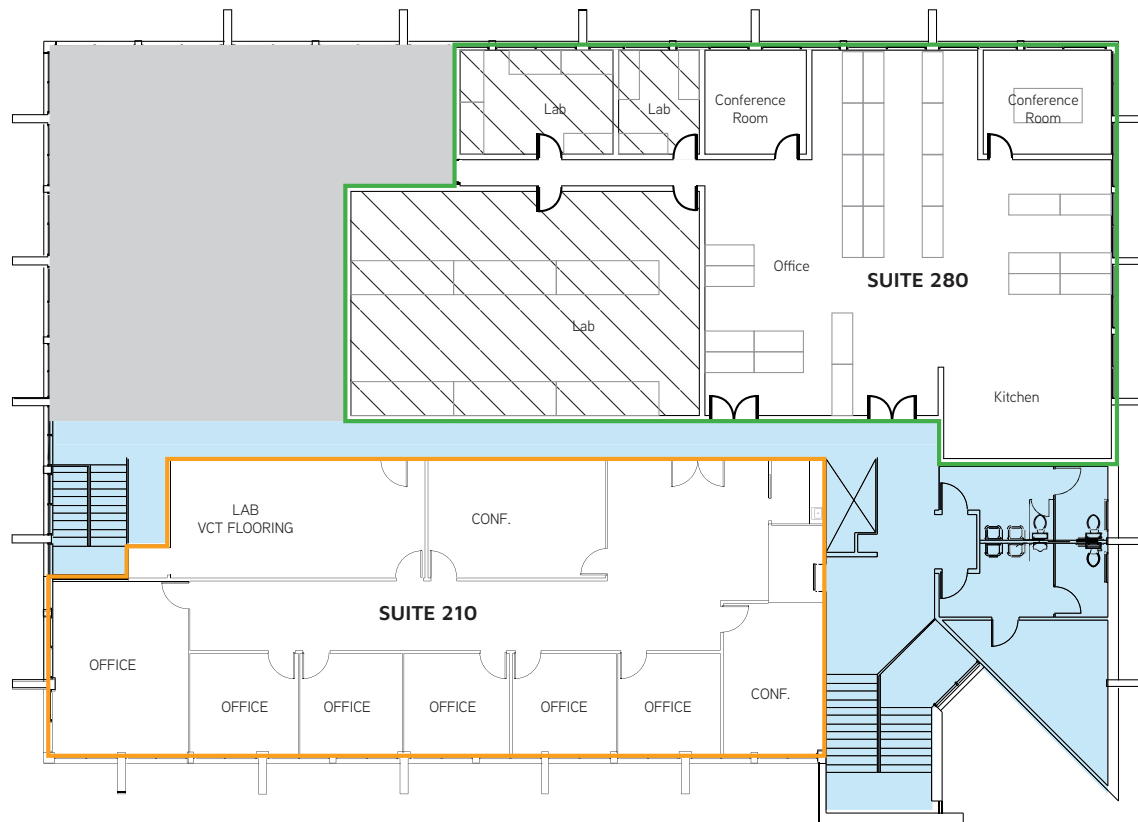
-  = ASVB lockbox location
-  = Retail Amenities

DION CAMPISI, SIOR  
+1 408 242 6187  
dion.campisi@colliers.com  
CA License No. 01321946

**101 @ Trimble Office Park**  
SANTA CLARA, CA



# 3180 De La Cruz Boulevard



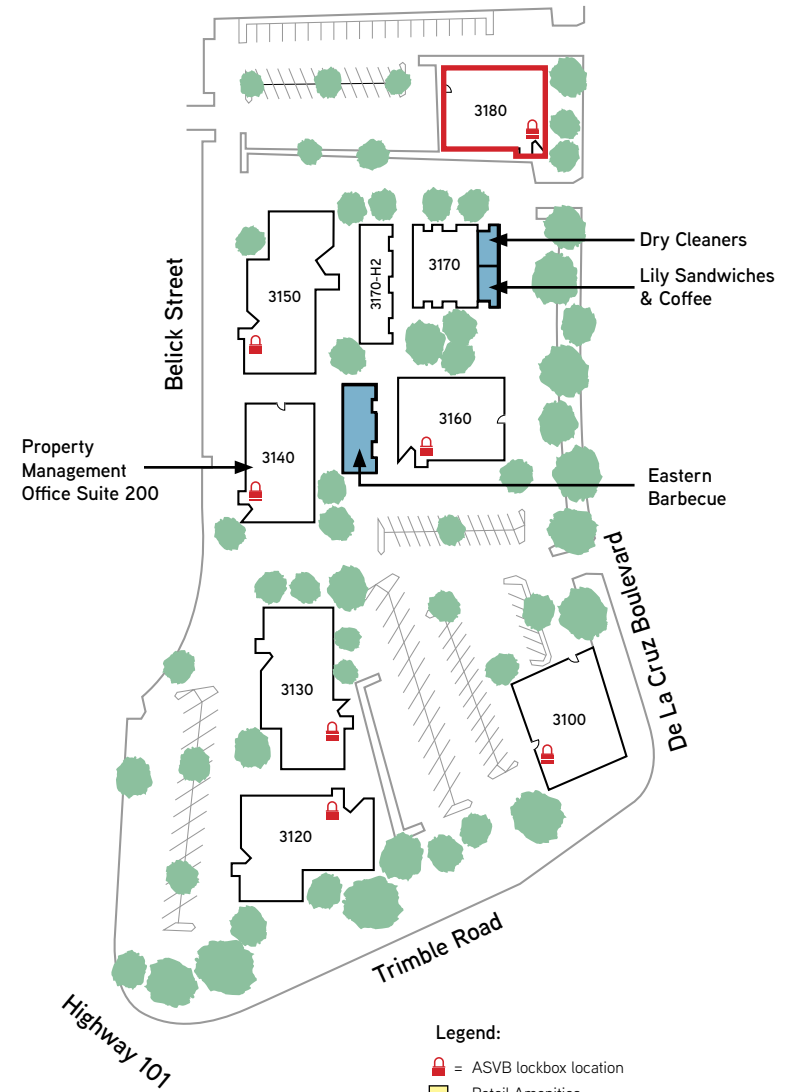
**3180 De La Cruz Blvd  
Suite 210 - 3,363 SF**  
Lab, approx. 377 sq ft.  
No dedicated AC in the lab.  
Office area: 15-ton RTU/AC.



= 3,363 SF (Suite 210)  
 = 4,166 SF (Suite 280)

= Lab  
 = Common Area  
 = Leased

**3180 De La Cruz Blvd  
Suite 280 - 4,166 SF**  
Lab 1, approx. 490 sq ft. No dedicated AC in the lab.  
Lab 2, approx. 836 sq ft.  
No dedicated AC in the lab.  
Office area: 15-ton RTU/AC shared with offices next door.



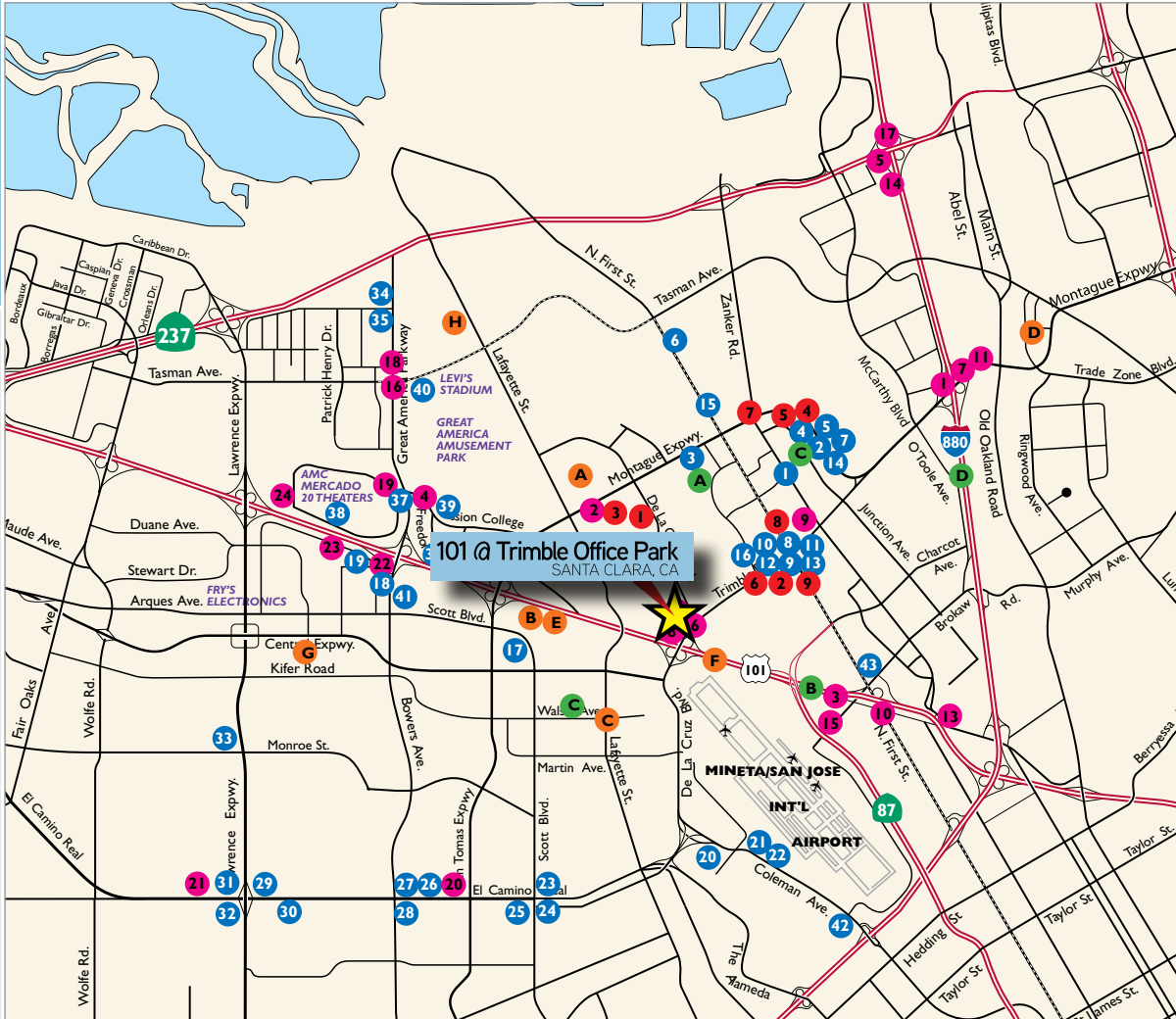
**Legend:**  
 = ASVB lockbox location  
 = Retail Amenities

DION CAMPISI, SIOR  
+1 408 242 6187  
dion.campisi@colliers.com  
CA License No. 01321946

**101 @ Trimble Office Park**  
SANTA CLARA, CA



# Amenities Map



## RESTAURANTS

1. Beryl's Place
2. Premier Pizza
3. **Rivermark Village**
  - Chipotle
  - Coldstone Creamery
  - Easterly Hunan Cuisine
  - Fantasia Coffee & Tea
  - Jamba Juice
  - Jersey Mike's Subs
  - Mezbaan Bar & Indian Cuisine
  - Peet's Coffee & Tea
  - Posh Bakery
  - Premier Pizza
  - Prolific Oven
  - Smashburger
  - Red Robin
4. Una Mas
5. China Taste Fast Food Restaurant
6. Quiznos
7. Hobe's Restaurant
8. Ume Chinese Fast Food
9. Sangam Indian Cuisine
10. Thai Orchid Thai Cuisine
11. Honba Sushi Express
12. Ace's Pizza
13. Olives Greek Cafe
14. Starbucks
15. Andiamo Cafe
16. De La Cruz Deli
17. Bamboo Leaf Vietnamese Cuisine
18. Sizzler
- Jack in the Box
- Arthur's
- McDonald's
19. El Torrito
20. McDonald's (near Costco)

- Lettuce Sandwich Shop
- Men Bei Ramen
- 21. Akita Sushi
- 22. Restaurant
- 23. Andy's BBQ
- 24. Noah's Bagels
- Jamba Juice
- Una Mas
- Korea House
- 25. Pho Thanh
- 26. El Pollo Loco
- 27. Sushi Sushi
- 99 Chicken
- Hana Maki
- Pizza Hut
- Yang Pyung
- 28. Peacock Indian Cuisine
- 29. Chili's
- King Noodle
- Paris Baguette
- Treya Sushi
- 30. Pho Hoa
- El Camino
- Mongolian BBQ
- 31. Starbucks
- Bombay Garden
- 32. Taco Bell
- 33. Vito's Famous Pizza
- 34. Taco Bell
- 35. KFC
- Togo's
- 36. Pedro's
- Birk's
- 37. IHOP
- Bennigan's
- House of Bagels
- Round Table Pizza
- 38. Tomatina
- Jamba Juice
- Sushi Yoyo
- Ben & Jerry's
- Starbucks
- In-N-Out Burger

39. Parcel 104
40. La Fontana
41. Specialty's Bakery
42. In-N-Out Burger, MOD Pizza, Smoking Pig, BBQ, Chipotle, Starbucks, Wich Superior Sandwiches
43. McDonald's

20. Howard Johnsons
- Granada Inn
- Santa Clara
21. Vagabond Inn
22. Embassy Suites
23. The Plaza Suites
24. Ramada Inn

## BANKS

1. Wells Fargo Bank
2. Bank of America
3. Keypoint Credit Union
4. Chase Bank
5. Meriwest Credit Union
6. Fremont Bank
7. Wells Fargo Bank
8. Wells Fargo Bank
9. Comerica Bank

## HOTELS

1. Beverly Heritage Hotel
2. Sierra Suites
3. Doubletree Hotel San Jose
4. Marriott-Santa Clara
5. Homestead Studio Suites Hotel
6. Best Western Gateway
7. Sheraton San Jose Hotel
8. Biltmore Hotel & Suites Silicon Valley
9. Homewood Suites San Jose
10. Fairfield Inn - San Jose Airport
11. Sleep Inn Silicon Valley
12. Sodexo Marriott
13. Staybridge Suites San Jose
14. Crowne Plaza San Jose Silicon Valley
15. Courtyard by Marriott
16. Hilton Santa Clara
17. Hilton Garden Inn-Milpitas
18. Hyatt Regency/Santa Clara Convention Center
19. Holiday Inn

## MAIL SERVICE

- A. Postal Annex
- B. FedEx Office Ship Center
- C. US Post Office
- D. California Mailing Service Inc.

## HEALTH CLUBS

- A. Curves
- B. Gold's Gym
- C. Club One at Silicon Valley
- D. South Bay Athletic Club
- E. McCall Gym Group Inc.
- F. Club One
- G. Decathlon Club
- H. Santa Clara Golf and Tennis Club

DION CAMPISI, SIOR  
 +1 408 242 6187  
 dion.campisi@colliers.com  
 CA License No. 01321946

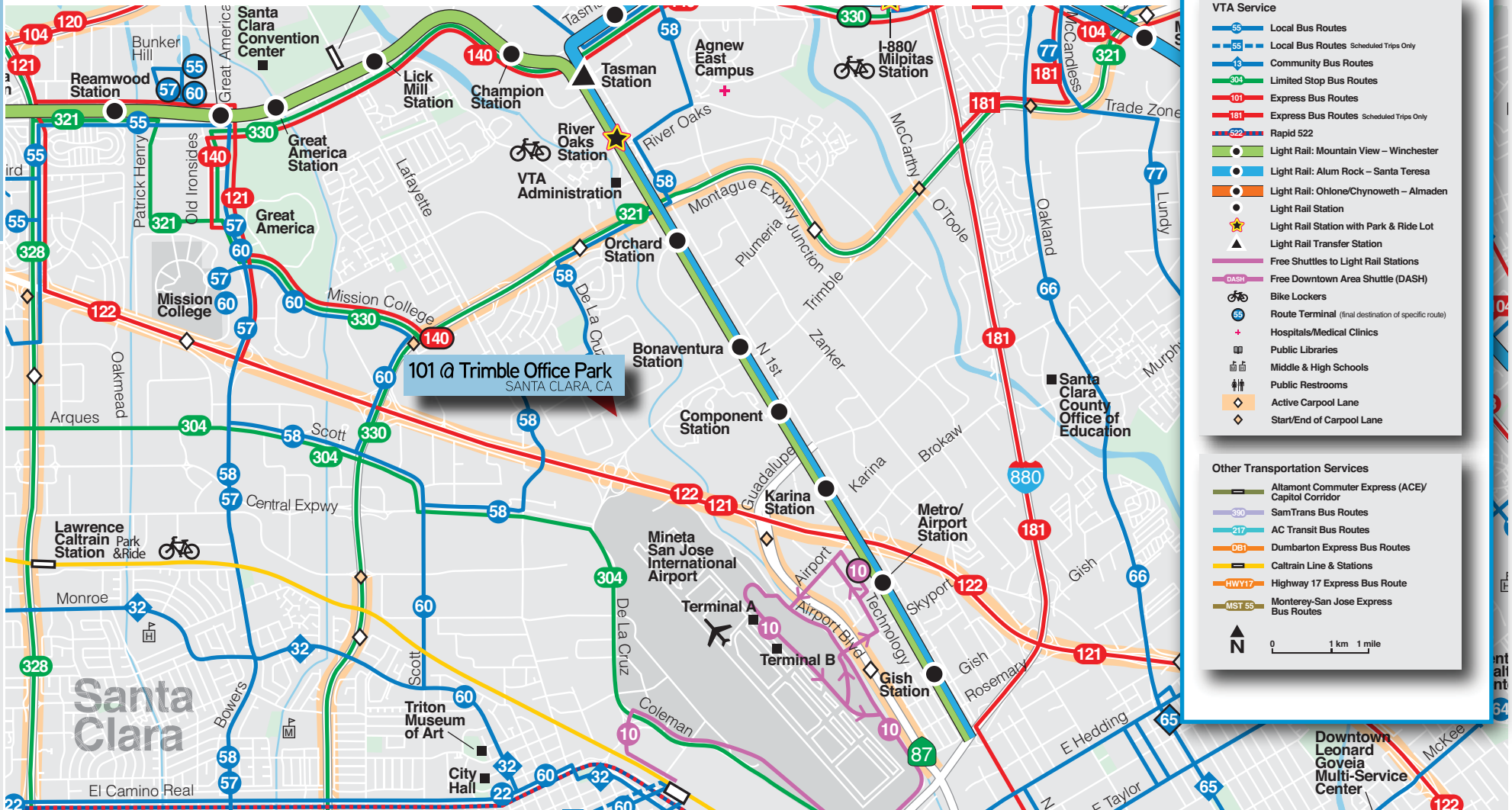
**101 @ Trimble Office Park**  
 SANTA CLARA, CA



# Transportation Map

## Bus & Rail Map

January 2013



DION CAMPISI, SIOR  
 +1 408 242 6187  
 dion.campisi@colliers.com  
 CA License No. 01321946

101 @ Trimble Office Park  
 SANTA CLARA, CA



# Aerial Map



DION CAMPISI, SIOR  
+1 408 242 6187  
dion.campisi@colliers.com  
CA License No. 01321946

**101 @ Trimble Office Park**  
SANTA CLARA, CA

