



MADRONA PLAZA

1421 34th Ave Seattle, WA 98122

IN THE HEART OF MADRONA

Office space in the heart of Madrona, located just east of Capitol Hill and conveniently positioned between I-90 and SR-520. Tucked into a calm, walkable setting the location blends neighborhood charm with everyday convenience.

PERFECTLY PLACED FOR MIDDAY MOMENTS AND EVENING UNWINDS

WITHIN 3 MILES:



+15
Restaurants



+15
Shops



+10
Parks



**University
of
Washington**



I-5



SR-520

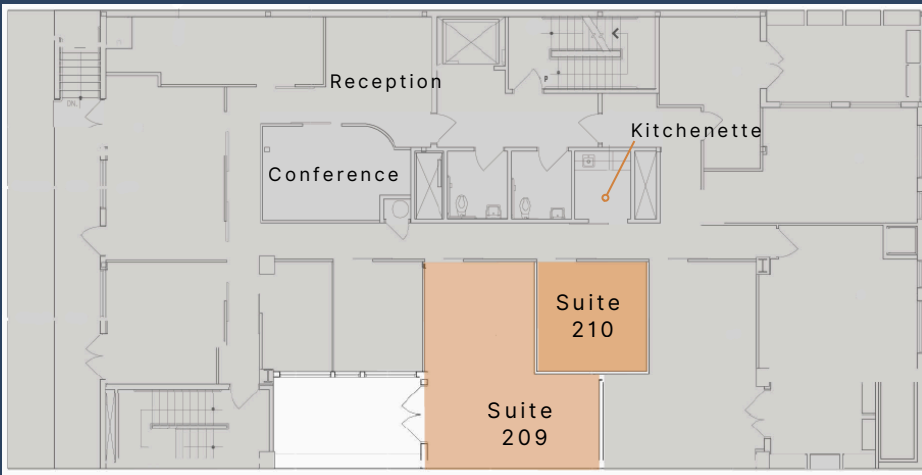


GET IN TOUCH

JENNY ARVISO
206.659.2151
jenny@incityinc.com



FLOOR 2 AVAILABILITY



SUITE 209

525 RSF | Available Now



SUITE 210

229 RSF | Available Now



FULL SERVICE LEASE INCLUDES:



Great Location



Meeting Room



Reception Area



Internet / WiFi



Kitchenette



Reserved covered parking (contact for rates)

Conference Room



Reception Area



**CONTACT TO LEARN MORE
OR SCHEDULE A TOUR!**

GET IN TOUCH

JENNY ARVISO
206.659.2151
jenny@incityinc.com



The information contained herein has been given to us by the owner or sources that we deem reliable. We have no reason to doubt its accuracy, but we do not guarantee it. Prospective tenants should carefully verify all information contained herein.