

METROPOLIS REALTY

Nick Arsenis

RESIDENTIAL & COMMERCIAL

SALES | LEASING | MANAGEMENT

29-17A 23RD AVENUE ASTORIA NY 11105

Cell. 917-531-4029 Office. 718.545.9700 Email. Nick@InAstoriaNY.com



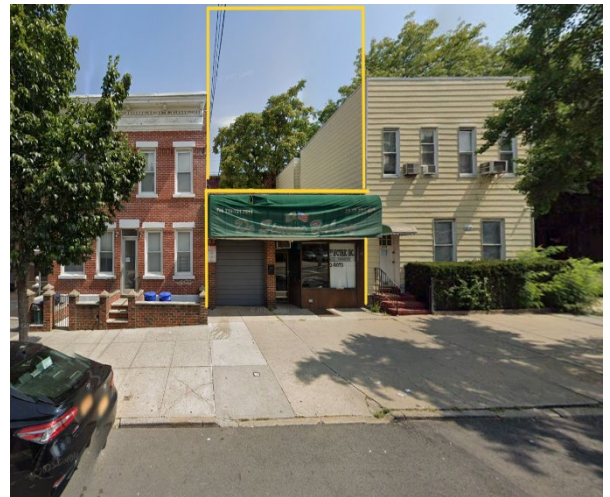
27-17A 23rd Avenue, Astoria, NY 11102 Development Site For Sale

Positioned in one of Astoria's most active residential & commercial districts, and truly in the core of the Ditmars / Astoria area, 27-17 23rd Avenue presents an excellent development opportunity in one of the premier locations of the Astoria market. Not your ordinary property, this "L" shaped lot provides rare and valuable development advantages for a truly unique new building.

Located on the vibrant path of 23rd Avenue and moments from the social and retail corridor of Ditmars Blvd, Astoria Park, and the N & W subway line, this property provides investors and developers with the ability to capitalize on outstanding location, strong residential demand, and continued long-term growth with increasing value.

Property Highlights

- "L" shaped property offers access / frontage from 23rd Avenue with side entry / access from 28th Street, providing full frontage, multiple design/development options and ease of construction
- 24.83 ft x 100 ft (straight form 23rd Avenue)
- 25 x 75 (Side from 28th Street)
- Total Lot sq ft 3,233
- Zoning R5D-C1-3 at 6,500 BUILDABLE SQ FT
- Prime Astoria location near Astoria Park and waterfront
- Strong residential development corridor
- Two street blocks to N / W subway lines, and convenient access Grand Central, RFK, BQE & NYC Ferry
- Ideal opportunity for condominium or rental development, w/ mixed use options available.
- Located in a high-demand neighborhood with continued population growth
- Excellent access to neighborhood retail, dining, and lifestyle amenities



Astoria remains one of Queens' most resilient and desirable residential markets, supported by limited housing supply, increasing luxury development, and outstanding renter demand. The neighborhood's combination of accessibility, community character, and ongoing investment activity positions 27-17 23rd Avenue as an exceptional opportunity for developers seeking scale and long-term upside.

For additional information or offering details, please inquire directly.



- 24.83 ft x 100 ft (straight from 23rd Avenue)
- 30 x 50 (Side from 28th Street)
- Total Lot sq ft 3,233
- Zoning R5D-C1-3 at 6,500 BUILDABLE SQ FT



27-17 23 AVENUE ASTORIA NY 11105

